




- BLM Managed Lands
- National Park System
- National Wildlife Refuge System
- Native Patent or IC
- State Patent or TA
- Major Military
- Private Lands
- ACEC Designated Polygons
- Utility Corridor
- Wilderness Study Area
- Easement_17b_site
- Existing 17(b) Easement
- Alaska State Claimed RS2477

Central Yukon Planning Area

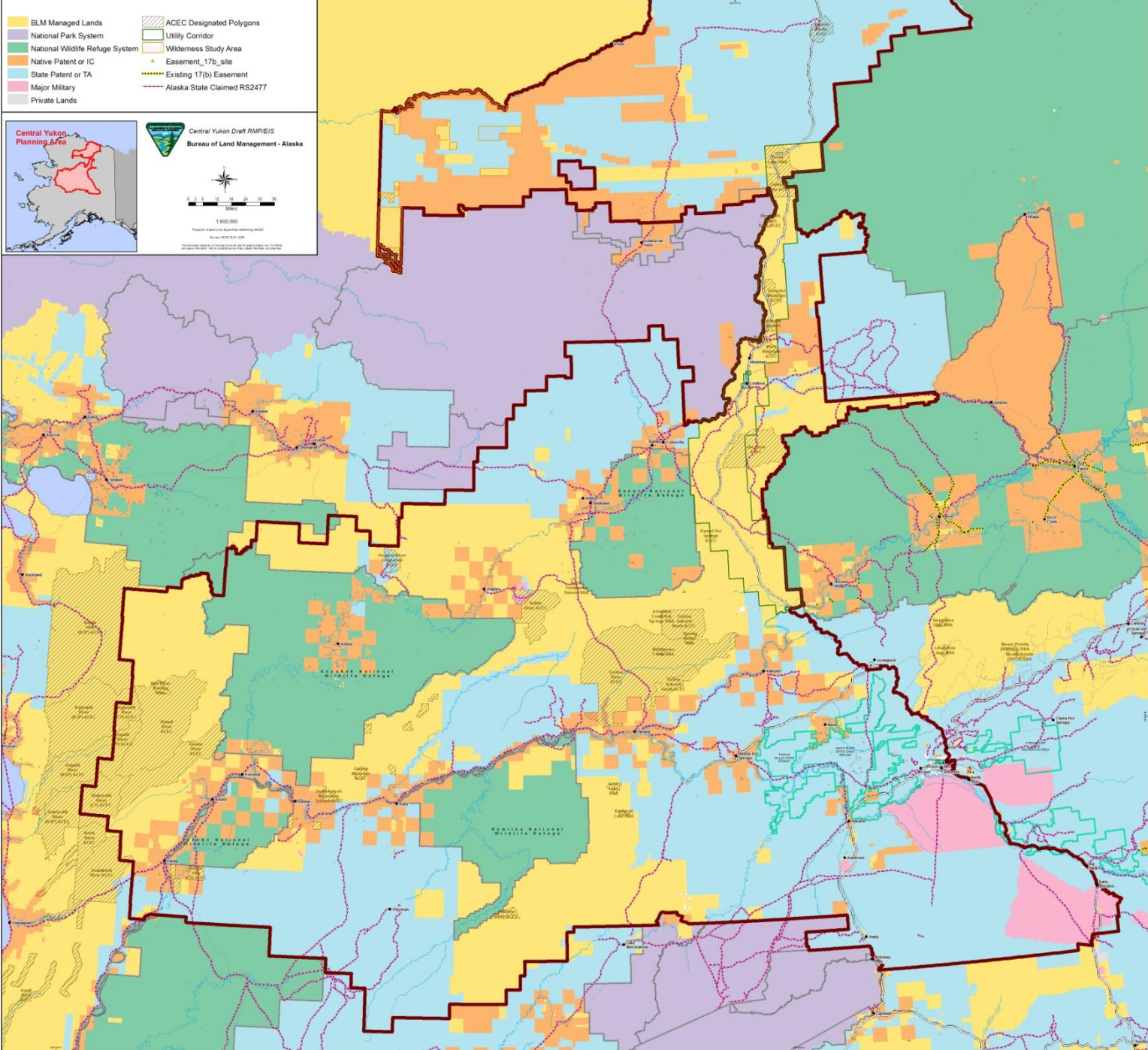




Central Yukon Draft RMP/EIS
Bureau of Land Management - Alaska



1:600,000
Project Area Extent Data Not Intended for Scale
North: 6685000, 6685000
West: 1500000, 1500000
Datum: NAD 83
Projection: UTM
Units: Meter



Gravel Pits & Mining Claims

- BLM Managed Lands
- National Park System
- National Wildlife Refuge System
- Native Patent or IC
- State Patent or TA
- Major Military
- Private Lands
- Federal Mining Claims
- Gravel Pit - Minerals & Materials Sale
- Wilderness Study Area
- Existing 170i Easement
- Easement_170i_site
- Alaska State Claimed RS2477



Central Yukon Draft RMPEIS
Bureau of Land Management - Alaska

1:625,000
Map Date: 08/01/2018

