

Alaska Lands Update

monthly updates on Federal management
actions for the people of Alaska

Citizens' Advisory Commission on Federal Areas, Department of Natural Resources, State of Alaska
3700 Airport Way Fairbanks, AK 99709

Proposed Delta River Special Recreation Management Area Plan

The Bureau of Land Management, Glennallen Field Office has released for public review the Environmental Assessment (EA) and Finding of No Significant Impact (FONSI) for the Proposed Delta River Special Recreation Management Area (SRMA) Plan and East Alaska Resource Management Plan (EARMP) Amendment. In a letter to the public Glennallen Field Manager Beth Maclean stated that the proposed EARMP and EA provide a framework for the future management direction and appropriate use of the Delta River SRMA. The document contains both land use planning decisions and implementation decisions to guide management of the Delta River SRMA.

The proposed EARMP Amendment and EA are available at the Glennallen Field Office or on the BLM Alaska website: http://www.blm.gov/ak/st/en/prog/planning/east_alaska_plan/East_AK_Delta_River_EA_Amend.html

Alternative 2 of the proposed EARMP Amendment is the BLM's preferred alternative and is similar to Alternative 2 in the Draft EARMP

(Continued on page 2)

Denali National Park Draft Vehicle Management Plan Released

The National Park Service has announced the availability of a Draft Environmental Impact Statement (DEIS) on a **Denali Park Road Vehicle Management Plan** for Denali National Park and Preserve. The document describes and analyzes the environmental impacts of a no action alternative and two action alternatives for management of vehicle use on the Denali Park Road. The purpose of the DEIS is to analyze the effects of the alternatives for managing vehicle use along the Park Road in Denali National Park. Since the mid-1920s, visitors have been able to travel the approximately 90-

mile Park Road on buses operated by the park concessioner. Starting in 1972, when private vehicle traffic was restricted beyond mile 15 of the road, visitors have used the mandatory visitor transportation system. The present approach for managing vehicles on the Park Road is based on the park's 1986 general management plan, which established a seasonal limit of 10,512 vehicles beyond mile 15 between approximately Memorial Day and a week after Labor Day. As tourism in Alaska has increased, so have demands for visits along the Park Road.

(Continued on page 3)

IN THIS ISSUE:

2: Halibut Catch Sharing Plan

2: National Park Service
Compendium

3: Open For Comment

Pacific Halibut Fisheries Catch Sharing Plan

NOAA's Fisheries Service is seeking public comment on a draft rule, called a catch sharing plan, designed to sustainably manage the halibut stock in southeast Alaska and the central Gulf of Alaska. The draft rule can be found at this website: <http://www.gpo.gov/fdsys/pkg/FR-2011-07-22/pdf/2011-18321.pdf>

The North Pacific Fishery Management Council recommended the rule to establish a clear allocation between the commercial and charter sectors that fish in these areas. Currently, the commercial and charter halibut fisheries are managed under different programs. The commercial halibut fishery has been managed under a catch limit program since 1995. The charter halibut sector has been managed under a different harvest guideline since 2003, which gives charter fishermen a number of fish they can catch per guided angler per day, but does not ensure the overall catch stays within a definitive catch limit.

According to NOAA, the proposed catch sharing plan, which is scheduled to be in place by 2012, is designed to foster a sustainable fishery by preventing overharvesting of halibut.

(Continued on page 4)

Delta River SRMA (Continued from page 1)

Amendment and EA. The Proposed EARMP Amendment and EA contain a summary of the written and verbal comments received during the March 23, 2010 to May 6, 2010 public review period and the associated responses to those comments. All substantive changes made to the draft documents, as a result of public comment, are highlighted in gray as a guide to the public.

There is a 30 day protest period, beginning on August 1, 2011, for the Proposed EARMP Amendment and EA. Pursuant to the BLM's planning regulations, any person who participated in the planning process for the Proposed EARMP Amendment and EA and has an interest which is or may be adversely affected by the planning decisions may protest approval of the planning decisions by August 31, 2011. Anyone interested in filing a protest should review the BLM protest regulations, located on the BLM website.

All protests must be in writing and mailed to one of the following addresses:

Regular Mail

Director (210)

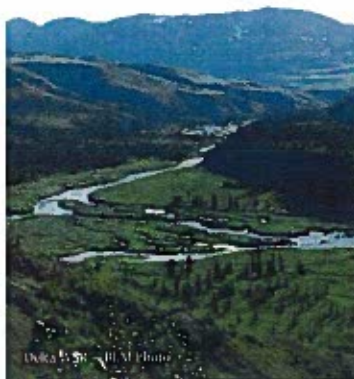
Attn: Brenda Hudgens-Williams
P.O. Box 71383
Washington, D.C. 20024-1381

Overnight Mail

Director (210)

Attn: Brenda Hudgens-Williams
20 M Street SE, Room 2134LM
Washington, D.C. 20003

Emailed or faxed protests will not be accepted as valid protests unless the protesting party also provides the original letter by either regular or overnight mail postmarked by the close of the comment period. Faxed protests should be directed to the attention of Brenda Hudgens-Williams, the BLM protest coordinator, at 202-452-5112 or emailed to bhudgens@blm.gov.



Commission Members

Representative Wes Keller, Wasilla

Chairman - (H)

Mark Fish, Anchorage

Vice Chairman - (G)

Rod Arno, Palmer (S)

Executive Committee

Charlie Lean, Nome (G)

Executive Committee

Mike Meekin, Palmer (H)

Senator Linda Menard, Wasilla (S)

Warren Olson, Anchorage (S)

Colleen Richards, Anchorage (G)

Rick Schikora, Fairbanks (H)

Susan Smith, Chokosna (G)

Alex Tarnai, Tanana (G)

Frank Woods, Dillingham (G)

(S) SENATE APPOINTMENT

(H) HOUSE APPOINTMENT

(G) GOVERNOR'S APPOINTMENT

Commission Staff

Stan Leaphart

Executive Director

907-374-3737

stan.leaphart@alaska.gov

Karrie Improte

Commission Assistant

907-451-2035

karrie.improte@alaska.gov

For more information, visit our website:

www.dnr.alaska.gov/commis/cacfa

AS 41.37.160 The Citizens' Advisory Commission on Federal Management Areas in Alaska is established in the department [Natural Resources]. In the exercise of its responsibilities, the commission shall consider the views of citizens of the state and officials of the state.



Kent Miller Photo

"The Denali Park Road is the only road that winds into the six-million acre wilderness landscape of Denali National Park and Preserve. It is a portal through which thousands of people travel each year to discover the wonders of this wild place."

July 25, 2011 letter from
Superintendent Paul Anderson

Draft Ketchikan-Misty Fiords Outfitter and Guide Management Plan. Comment period ends **August 22, 2011**. Draft plan and contact information can be found at this link: http://www.fs.fed.us/r10/tongass/projects/nepa_project.shtml?project=32817

U.S. Forest Service Draft Report on Sacred Sites. Agency is accepting comments on a draft report concerning U.S. Forest Service Native American Sacred Sites policies and procedures. Report

Denali Vehicle Management Plan (Continued from page 1)

This plan evaluates how to manage vehicle use, while continuing to provide high quality visitor experience, opportunities to view wildlife in natural habitats and to access the park's wilderness. The Denali Park Road Vehicle Management Plan is intended to guide park managers over the next 20 years with management of vehicles on the Park Road. The DEIS considers a reasonable range of alternatives based on management objectives, park resources and values, and public input.

Alternative A: (No Action): This alternative would continue current management of vehicle use on the Park Road. In addition to a seasonal limit of 10,512 vehicles past mile 15, there would continue to be specific seasonal and daily limits to tour buses, shuttle buses, inholder traffic, professional photographer vehicles, NPS administrative vehicles and other categories of vehicles.

Alternative B: This alternative would use an adaptive management framework for vehicle use based on indicators and standards for visitor experiences and resource protection. While adhering to these standards, management would maximize seating on all transit and tour vehicles to offer the largest number of visitors the opportunity to travel the Park Road. This adaptive management framework would include options for reducing or scheduling non-bus traffic to allow for additional visitor use.

Alternative C: This alternative would use an adaptive management framework for vehicle use based on indicators and standards for visitor experiences and resource protection. While adhering to these standards, management would promote a wide variety of visitor opportunities that would include brief experiences in the park's entrance area, short visits along segments of the Park Road, special interest tours, and multiday experiences in the park's backcountry. This adaptive management framework would include options for reducing or scheduling non-bus traffic to allow for additional visitor use.

The NPS has not identified a preferred alternative. Public comment will inform selection of a preferred alternative in the final EIS.

Public meetings will be held in Anchorage, Fairbanks, and Denali National Park. The specific dates and times of the public meetings will be announced in local media.

(Continued on page 4)

is available here: <http://www.fs.fed.us/spf/tribalrelations/sacredsites>

Comment period closes on **October 4, 2011**.

Federal Energy Regulatory Commission has issued a Notice of Intent to prepare an environmental impact statement for the planned Alaska Pipeline Project. The agency is requesting comments from the public and interested agencies. The comment period is open until **February 27, 2012**.

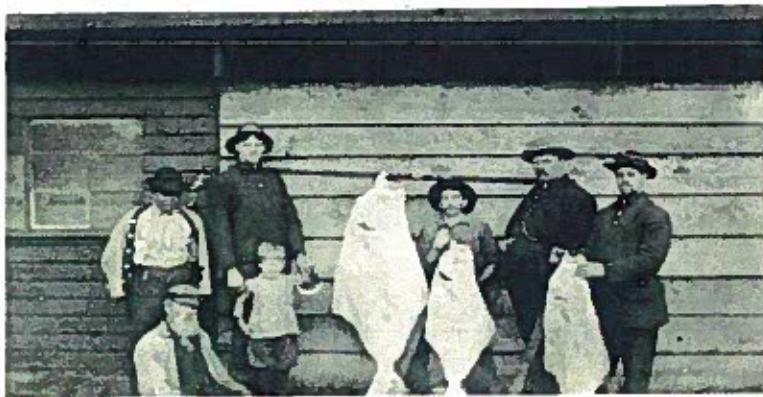
Notice can be found at this site: <http://www.gpo.gov/fdsys/pkg/FR-2011-08-05/pdf/2011-19942.pdf>

Denali Vehicle Management Plan (Continued from page 3)

Written comments on the DEIS should be submitted to Miriam Valentine, Park Planner, Denali National Park and Preserve, P.O. Box 588, Talkeetna, AK 99676.

Comments can be submitted electronically through the **NPS Planning, Environment and Public Comment system (PEPC)**. The DEIS also may be viewed and retrieved at this Web site as well. Hard copies of the DEIS are available by request from the address above or at the PEPC website:

<http://parkplanning.nps.gov/projectHome.cfm?rkID=9&projectId=22494>



Alaska State Library - Historical Collections

Halibut Sharing Plan (Continued from page 2)

The plan also would introduce provisions intended to provide flexibility for charter and commercial fishermen. Under this draft rule:

- The total commercial and charter catch limit for each management area would be allocated between the commercial and charter sectors.
- The International Pacific Halibut Commission, through which the United States and Canada jointly manage the halibut resource from California to the Bering Sea, would determine total commercial and charter catch limits for southeast Alaska and the central Gulf of Alaska each year before the fishing season.
- Upon acceptance of the International Pacific Halibut Commission catch limits by the Secretary of State and the Secretary of Commerce, NOAA's Fisheries Service would publish a rule implementing the catch limits as part of its annual management measures for the halibut fishery.
- Allocations to the charter and commercial sectors would vary with changes in the number of halibut available for harvest as determined by the best available science.
- Charter harvest limits would be determined before the beginning of the charter fishing season, which generally runs from February 1 to December 31, to enable charter business operators and anglers to plan for the upcoming season.
- The catch sharing plan would authorize transfers of commercial halibut individual fishing quota to charter halibut permit holders for harvest by anglers in the charter halibut fishery.
- Those transfers would offer charter vessel anglers in southeastern Alaska and the central Gulf of Alaska an opportunity to catch additional halibut, up to specified limits.

The public comment period runs until September 6, 2011.

For more information go to <http://alaskafisheries.noaa.gov/sustainablefisheries/halibut/>

Federal Agency**Websites**

National Park Service

<http://www.nps.gov/akso/>

U.S. Fish & Wildlife Service

<http://alaska.fws.gov/>

U.S. Forest Service - Region 10, Alaska

<http://www.fs.fed.us/r10/>

Bureau of Land Management

<http://www.blm.gov/ak/st/en.html>

Department of the Interior

<http://www.doi.gov/>

National Marine Fisheries Service

<http://alaskafisheries.noaa.gov/>

U.S. Fish & Wildlife Service is now accepting applications for Hunting Guide Areas on most National Wildlife Refuges in Alaska. Information on available guide areas and how to apply can be found at the Alaska Region website: http://alaska.fws.gov/nwr/visitor/bg_guide.htm

The Visitor Service Division can also be contacted at: 1011 East Tudor Road in Anchorage or at (907) 786-3967