



NORTHERN DYNASTY MINES INC.

**DRAFT ENVIRONMENTAL BASELINE STUDIES
2006 STUDY PLANS**

**CHAPTER 14.
CULTURAL RESOURCES**

JULY 2006

TABLE OF CONTENTS

TABLE OF CONTENTS..... 14-i

LIST OF TABLES (attached)..... 14-ii

LIST OF FIGURES (attached) 14-ii

14. CULTURAL RESOURCES..... 14-1

 14.1 Objectives of Study 14-1

 14.2 Proposed Study Plan..... 14-1

LIST OF TABLES (attached)

Table 14-1, Study Summary for Cultural Resources, 2004-2006

LIST OF FIGURES (attached)

Figure 14-1, Cultural Resources Survey in the Vicinity of the Mine Components

Figure 14-2, Cultural Resources Overview, Port Area

Figure 14-3, 2005 Cultural Resources Survey, Port Area

14. CULTURAL RESOURCES

The objectives and methods/approach for the mine area, transportation corridor, and port area are the same as described in the 2005 study plan, except as noted below. Stephen R. Braund & Associates (SRB&A) will lead cultural resources work on all three of these areas.

Table 14-1 summarizes work for the cultural resources studies in 2004 through 2006.

14.1 Objectives of Study

The objectives of the cultural resources studies are the same as described in Section 14.1 of the 2005 study plan.

14.2 Proposed Study Plan

The proposed work for 2006 is a continuation of the cultural resources surveys started in 2004 and described in Chapter 14 of the 2005 study plan.

The 2006 cultural resources field season will include revised components of the mine footprint and survey exploration drilling areas that were not surveyed in 2004 or 2005. Figure 14-1 shows areas SRB&A surveyed in 2004 and 2005 and the area proposed to be surveyed in 2006.

SRB&A surveyed the port area in 2005 (Figures 14-2 and 14-3) and located two archaeological sites. In 2006 SRB&A will be available to assist with mitigation of any ground-disturbing activities in the port area, as appropriate. In 2006, SRB&A also will survey the proposed bridge-crossing landings on the Newhalen River.



The 2006 cultural resources field season will not include the transportation and utility alignments (e.g., road, pipeline, or powerline) because these alignments have not yet been defined nor have centerlines been surveyed and staked.

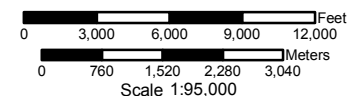
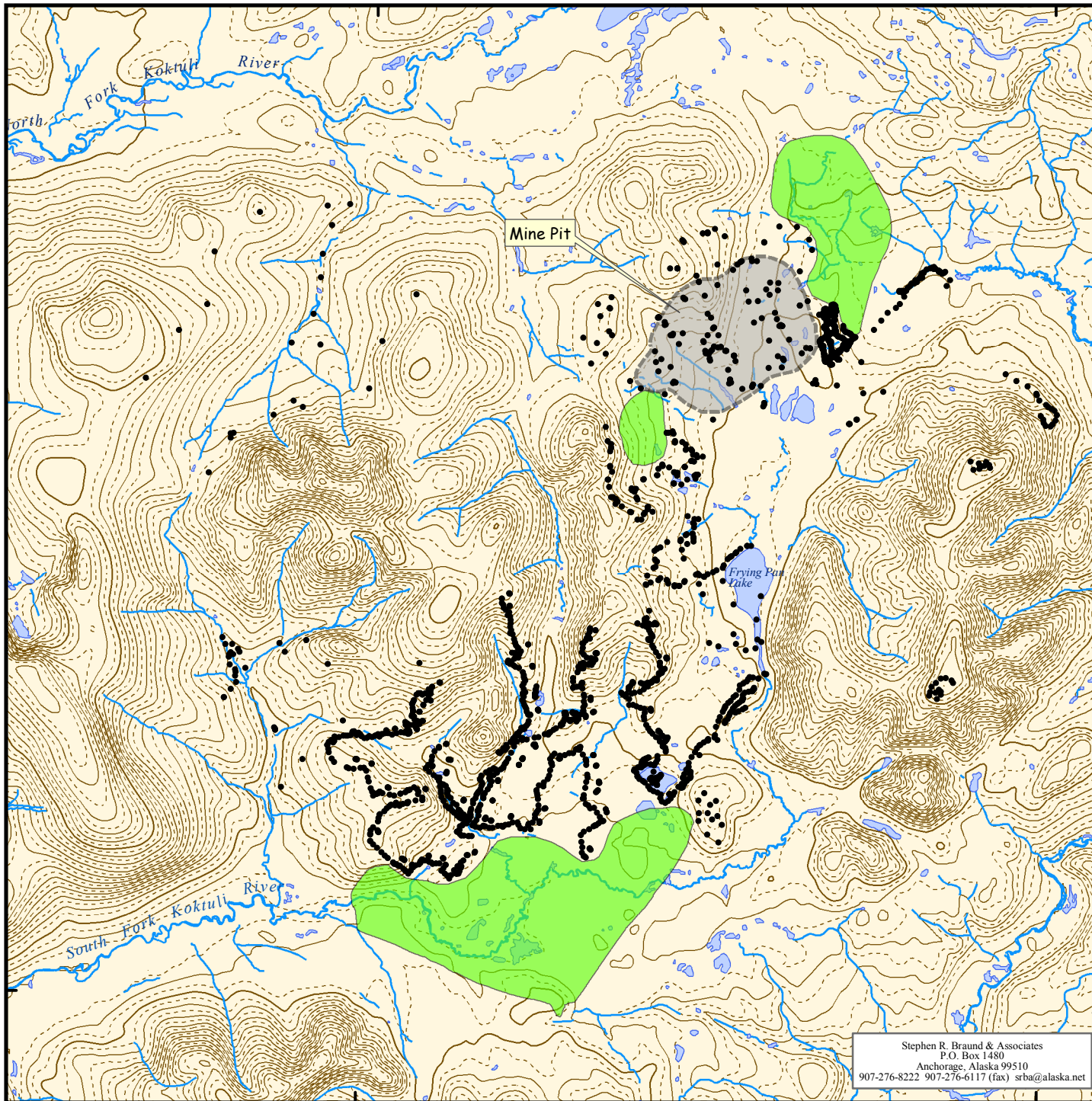
**Table 14-1
Pebble Project Environmental Studies
Study Summary for Cultural Resources, 2004-2006
Consultant: Stephen R. Braund Associates
Date: 5/25/06**

Discipline	2004 Data Collected or Tasks	2005 Data Collected or Tasks	2006 Tasks to be Completed
Cultural Resources	Mine Studies Area		
	Lit review & background information gathering	Lit review & background information gathering	Update literature review, AHRS & OHA information
	Scope, Schedule, Field Sampling Plan	Scope, Schedule, Field Sampling Plan	Scope, Schedule, Field Sampling Plan
	2004 Study Plan	2005 Study Plan	2006 Study Plan Summary
	Initiate consultation	Continue consultation	Continue consultation (agencies, Native orgs, others)
	Four trips (June-Sept): field & pedestrian surveys, subsurface testing, and monitoring or ground disturbing activities. Surveyed the mine pit, meteorological monitoring stations, proposed and existing VHF repeater sites, water reservoir, reactive rock storage areas, and low grade ore stockpile	April: surveyed exploration drilling area; August: two field trips to pit site to proposed tailings areas south and SW of pit area (see Figure 14-1)	Field survey any expansion of mine footprint; survey exploration drilling areas (See Figure 14-1)
	Process field data, notes, photographs, compile and analyze data	Process field data, notes, photographs, compile and analyze data	Process field data, notes, photographs, compile and analyze data
		Compile baseline inventory and description of cultural resources in the vicinity of the project areas	Continue baseline inventory and description of cultural resources in the vicinity of the project areas
	Presentation and Report Preparation	Presentation and Report Preparation	Presentation and report preparation
	Communication and Data Management	Communication and Data Management	Communication and data management
	Coordination with NDM & Agencies	Coordination with NDM & Agencies	Coordination with NDM, agency meetings, and monthly reporting
		2004 CR Progress Report to NDM (1/31/05)	
		2004 CR Progress Report to SHPO (1/31/05)	2005 CR Progress Report to SHPO (Pending)
		Feasibility Report - Cultural Resources (9/13/05)	
Agency Presentation-CR Oct 2004	Agency Presentation-Cultural Resources Nov 2005		
	Initial Environmental Analysis	Preliminary Environmental Baseline Document	
Cultural Resources	Transportation Corridor/Port Site		
	Lit review & background information gathering	Lit review & background information gathering	
	Scope, Schedule, Field Sampling Plan	Scope, Schedule, Field Sampling Plan	Scope, Schedule, Field Sampling Plan
	2004 Study Plan	2005 Study Plan	2006 Study Plan Summary
		Consultation	Continue Consultation
		June: two field trips to Iniskin Bay port site (see Figures 14-2 & 14-3)	
			Assist with mitigation of any ground-disturbing activities at port site
			Field survey crossing landings on Newhalen River
			Field survey of specific transportation alignments (road, pipeline, powerline) after identified on ground
		Process field data, compile and analyze data	Process field data, compile and analyze data
		Compile baseline inventory and description of cultural resources in the vicinity of the project areas	Continue baseline inventory and description of cultural resources in the vicinity of the project
		Report preparation	Assess eligibility for listing on NRHP of known sites
		Report preparation	Report preparation
		Communication and data management	Communication and data management
Coordination with NDM & Agencies	Coordination with NDM & Agencies	Coordination with NDM, agency meetings, and monthly reporting	
		2005 CR Progress Report to SHPO (Pending)	
	Initial Environmental Analysis	Preliminary Environmental Baseline Document	
		Prepare Section 106 report	

Cultural Resources Survey in the
Vicinity of the Mine Components

Figure 14-1

- 2004-2005 Waypoint
-  2006 Proposed Survey Area
-  Mine Pit




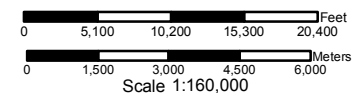
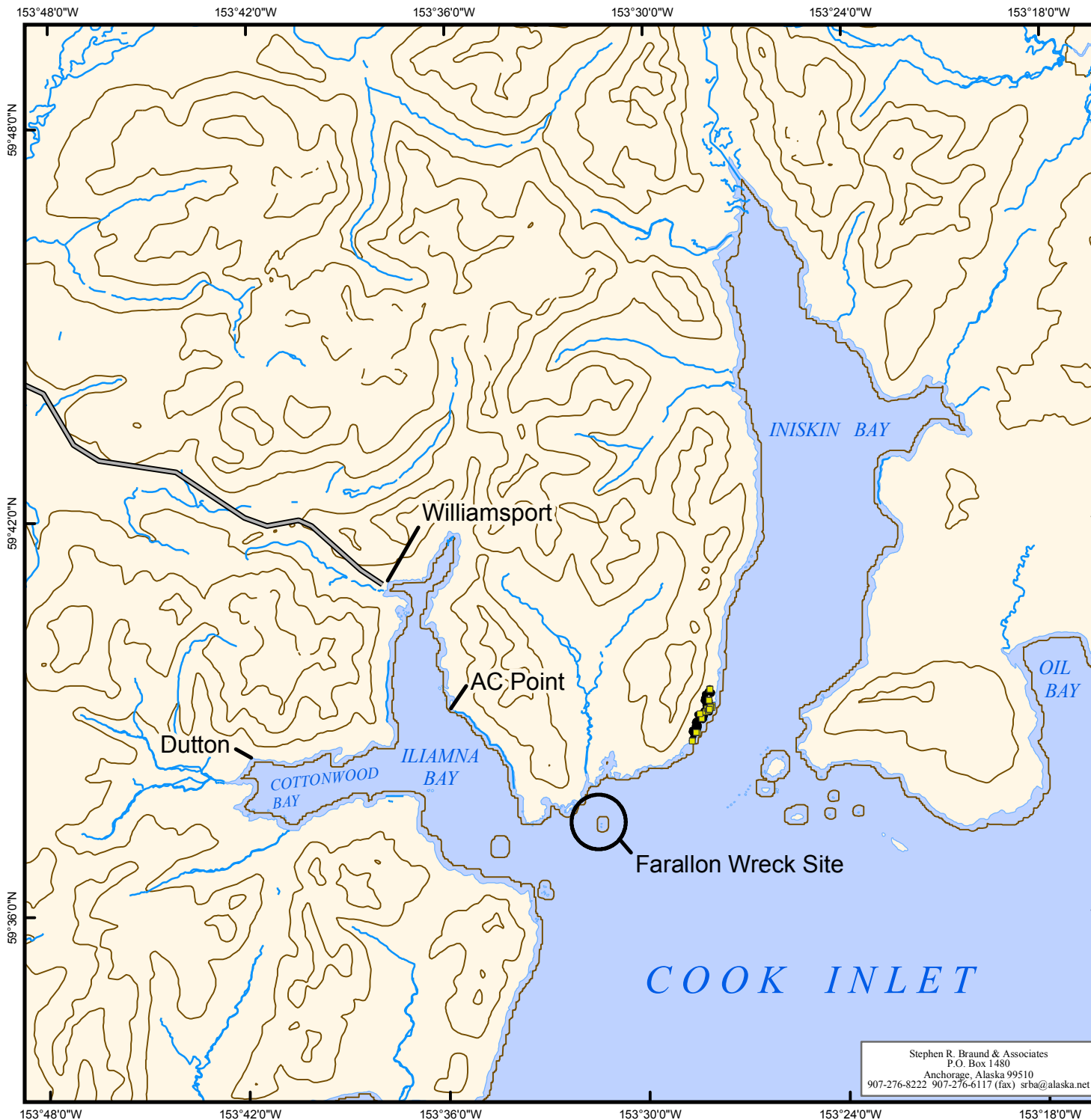
Alaska State Plane Zone 5 (units feet)
1983 North American Datum

Stephen R. Braund & Associates
P.O. Box 1480
Anchorage, Alaska 99510
907-276-8222 907-276-6117 (fax) srba@alaska.net

CR Survey	Date: May 26, 2006
Version: 1	Author: SRB&A

Cultural Resources Overview,
Port Area
Figure 14-2

- Test Pit
- Waypoint
-  Williamsport - Pile Bay Road



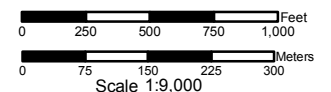
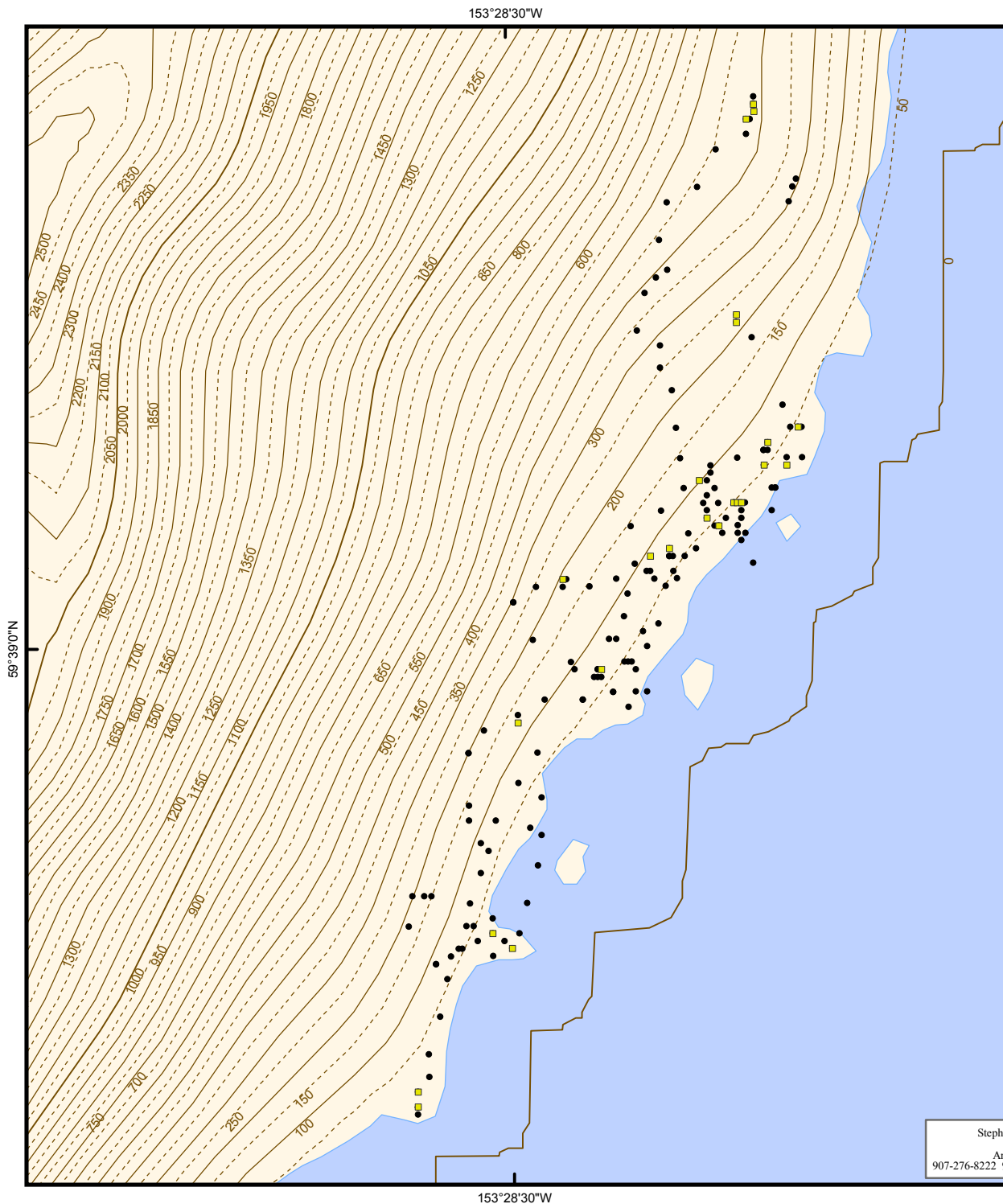
Alaska State Plane Zone 5 (units feet)
1983 North American Datum

Stephen R. Braund & Associates
P.O. Box 1480
Anchorage, Alaska 99510
907-276-8222 907-276-6117 (fax) srba@alaska.net

CR_port_overview	Date: May 26, 2006
Version: 1	Author: SRB&A

2005 Cultural Resources Survey,
Port Area
Figure 14-3

- Test Pit
- Waypoint



Alaska State Plane Zone 5 (units feet)
1983 North American Datum

Stephen R. Braund & Associates
P.O. Box 1480
Anchorage, Alaska 99510
907-276-8222 907-276-6117 (fax) srba@alaska.net

CR_2005_port_survey

Date: May 26, 2006

Version: 1

Author: SRB&A