



Pre-Permitting Environmental / Socio-Economic Data Report Series

Report Series D- Groundwater Hydrology Figures

Report D-3 (Figures)

Hourly Groundwater Elevations – Piezometer Transducer Figures

Submitted to the Pebble Limited Partnership June 2008

Preliminary data. Do not cite or quote.

The Pebble Partnership is providing environmental and socio-economic baseline data collected to inform the development of the Pebble Project to state and federal agencies, project stakeholders and the general public prior to project permitting as part of its commitment to full and open disclosure.

A comprehensive Environmental Baseline Document (EBD) will subsequently be prepared and appended to future project permit applications. The EBD will also be made publicly available when complete.

**PRE-PERMITTING
ENVIRONMENTAL SOCIOECONOMIC DATA
REPORT SERIES**

**REPORT SERIES D:
GROUNDWATER HYDROLOGY**

**SECTION 3 –
HOURLY GROUNDWATER ELEVATIONS –
PIEZOMETER TRANSDUCER FIGURES**

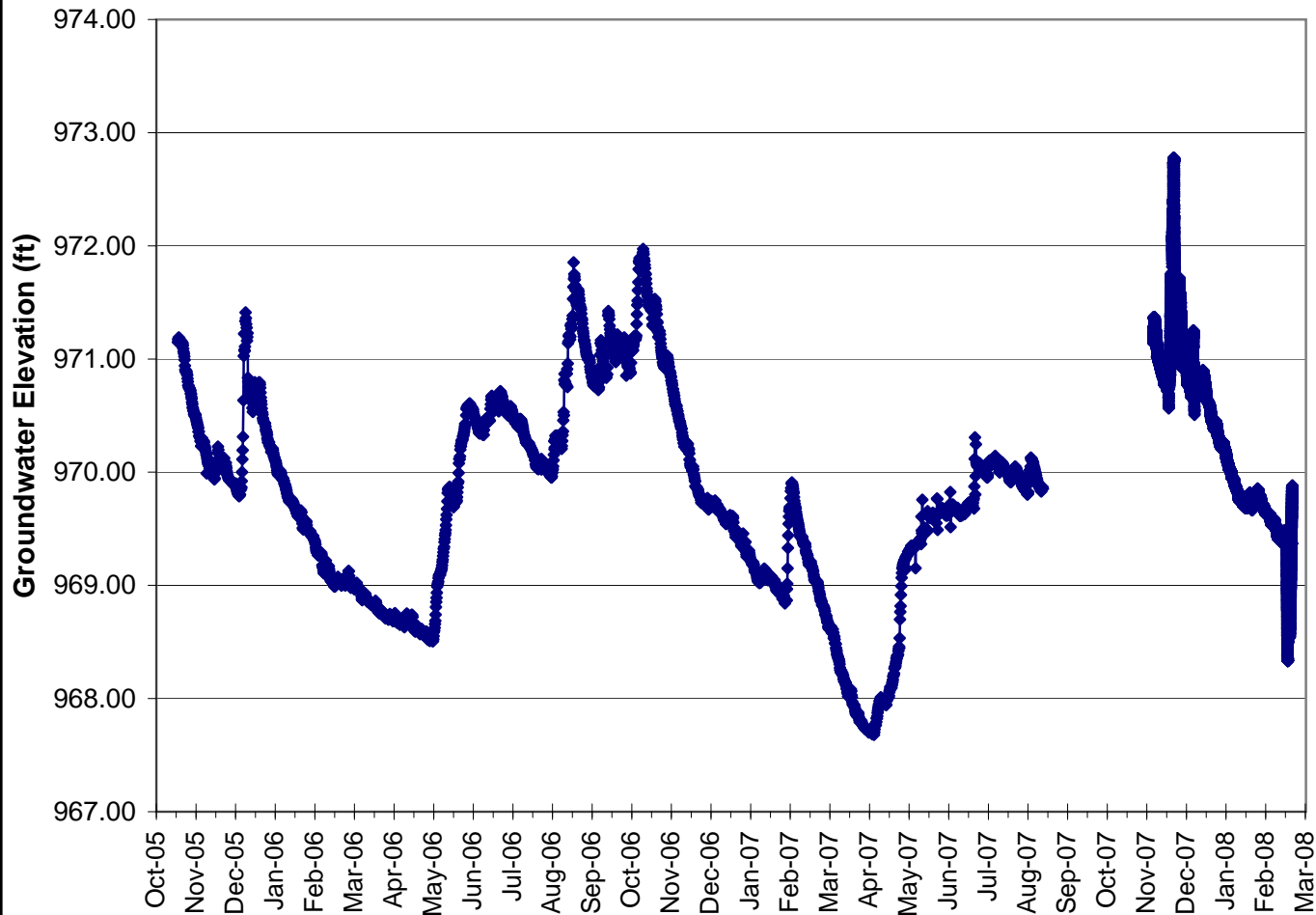
Section 3
Hourly Groundwater Elevations – Piezometer Transducer Figures

Table of Contents

Hourly Piezometer Transducer Figures:

MW-5S.....	1
MW-5D.....	2
MW-13S.....	3
MW-13D	4
P-05-07D	5
P-05-27S.....	6
P-05-27D	7
GH05-58	8
Barologger	9

Hourly Groundwater Elevations - Monitoring Well MW-5S



Pre-permitting
Environmental/Socio - Economic
Data Report Series

Report Series D:
Groundwater Hydrology

Section 3
Hourly Groundwater Elevations
Monitoring Well MW-5S

Legend

◆ MW-5S (28342 Data Points)



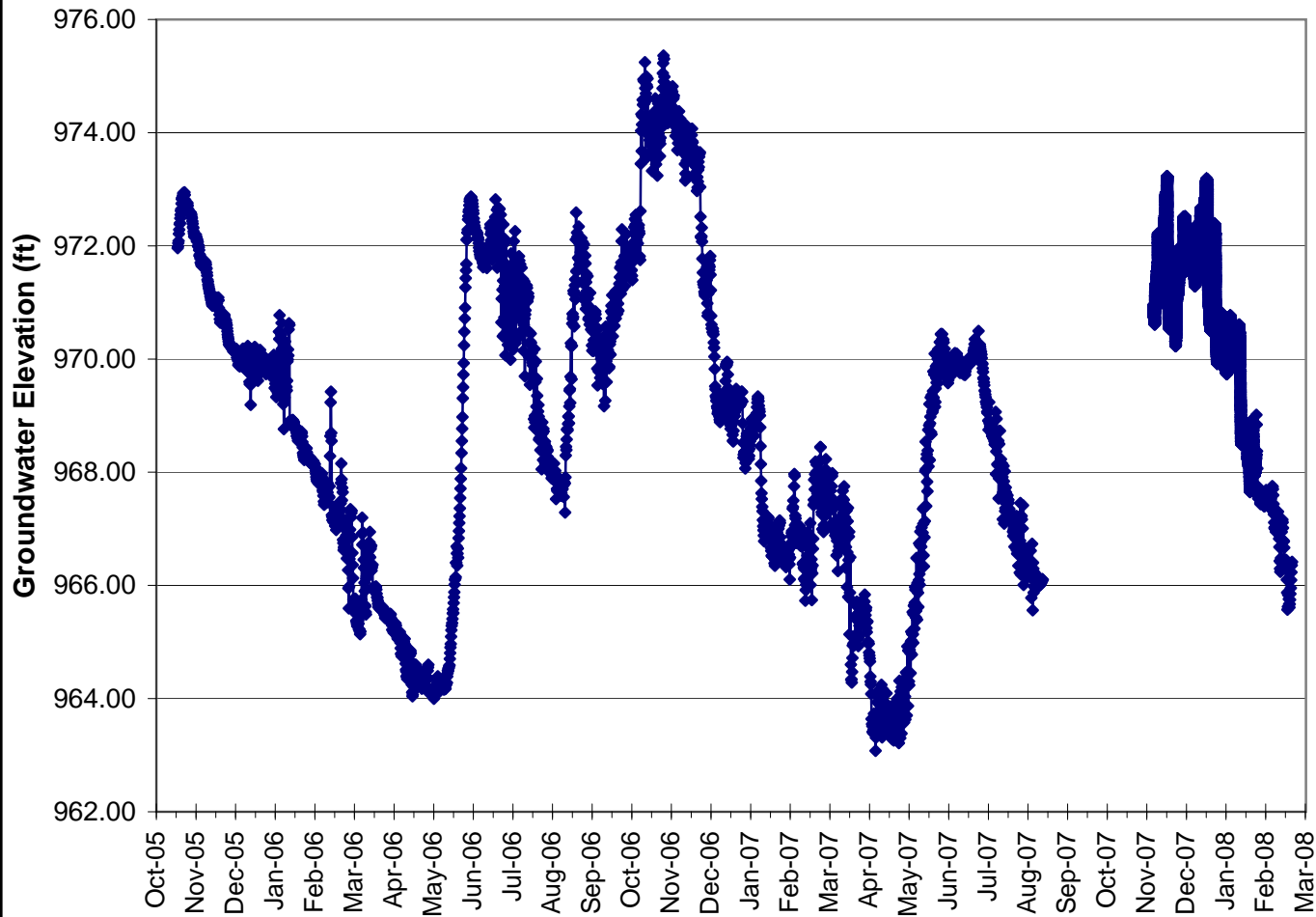
Project: 7126

Date: June 16, 2008

Version: 1

Author: WMC-LC

Hourly Groundwater Elevations - Monitoring Well MW-5D



Pre-permitting
Environmental/Socio - Economic
Data Report Series

Report Series D:
Groundwater Hydrology

Section 3
Hourly Groundwater Elevations
Monitoring Well MW-5D

Legend

◆ MW-5D (21743 Data Points)



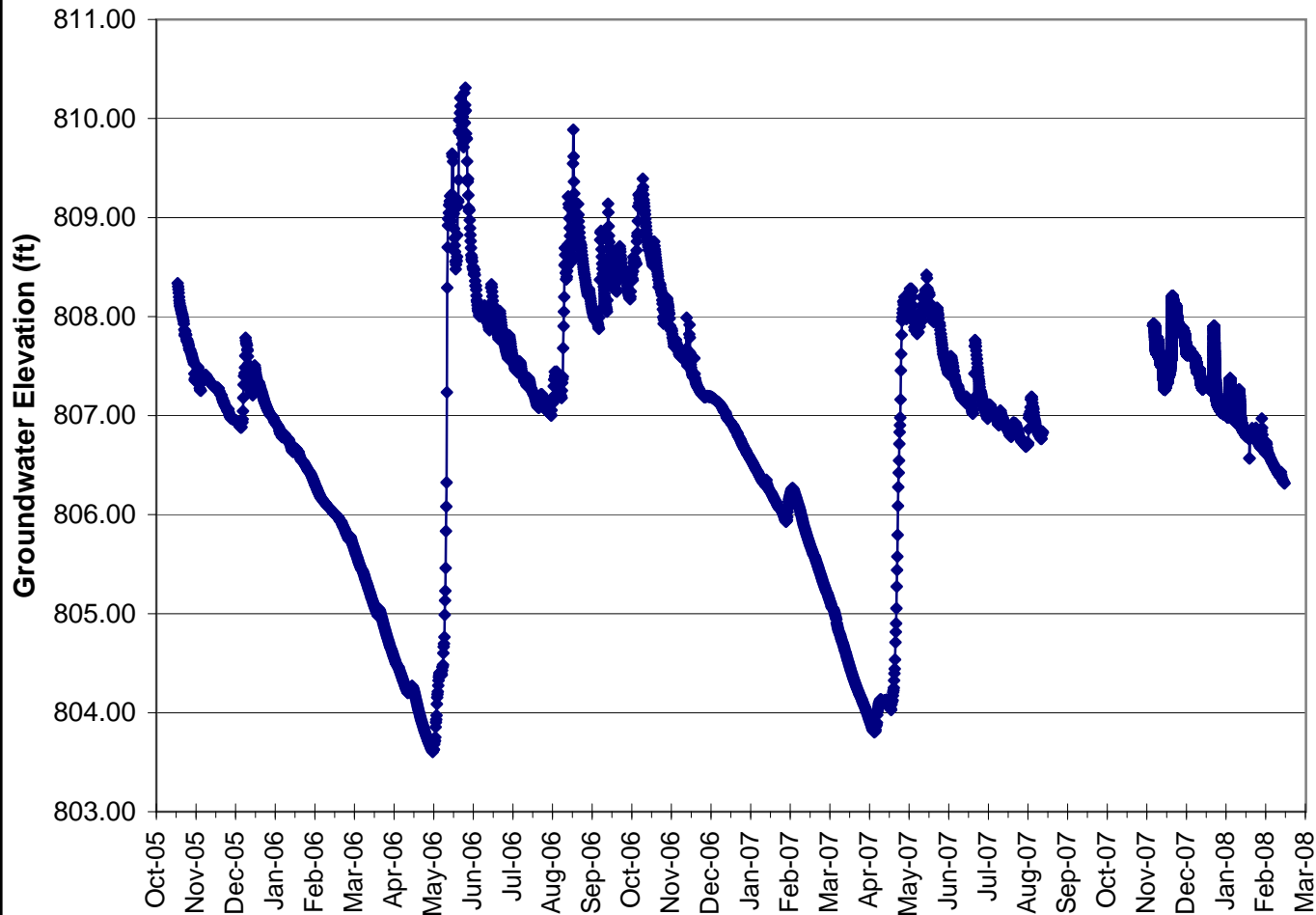
Project: 7126

Date: June 16, 2008

Version: 1

Author: WMC-LC

Hourly Groundwater Elevations - Monitoring Well MW-13S



Pre-permitting
Environmental/Socio - Economic
Data Report Series

Report Series D:
Groundwater Hydrology

Section 3
Hourly Groundwater Elevations
Monitoring Well MW-13S

Legend

—●— MW-13S (20542 Data Points)



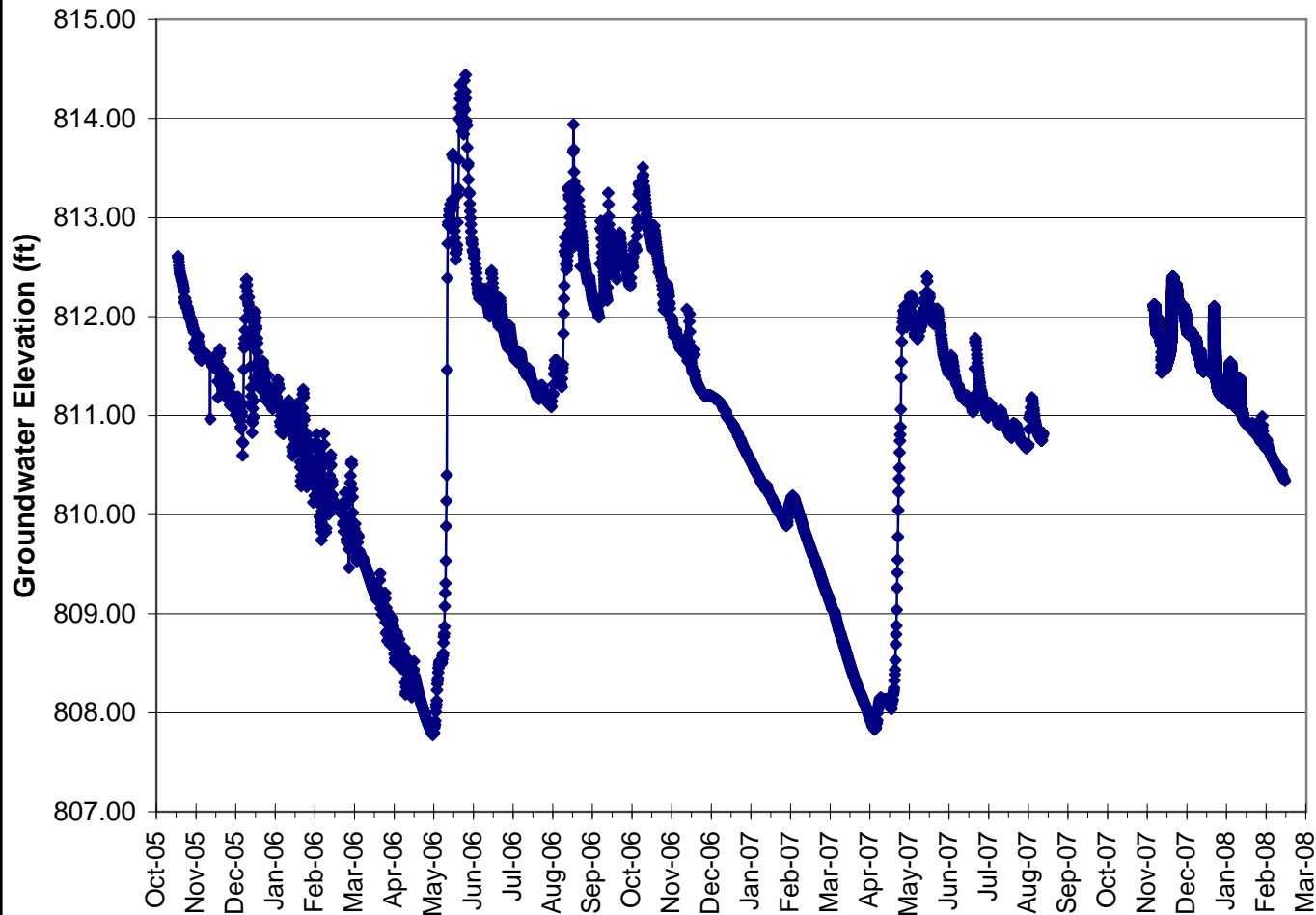
Project: 7126

Date: June 16, 2008

Version: 1

Author: WMC-LC

Hourly Groundwater Elevations - Monitoring Well MW-13D



Pre-permitting
Environmental/Socio - Economic
Data Report Series

Report Series D:
Groundwater Hydrology

Section 3
Hourly Groundwater Elevations
Monitoring Well MW-13D

Legend

—●— MW-13D (20541 Data Points)



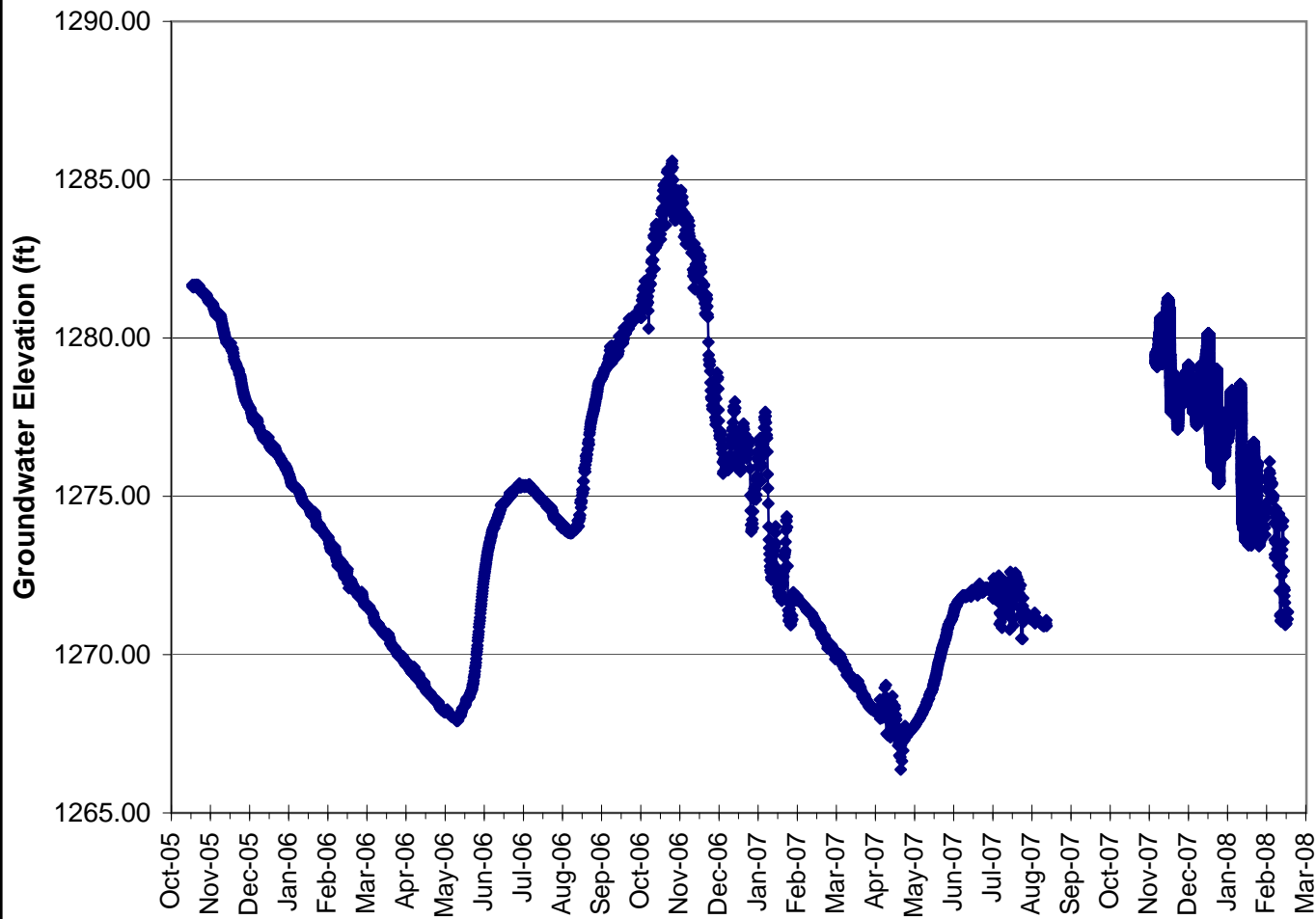
Project: 7126

Date: June 16, 2008

Version: 1

Author: WMC-LC

Hourly Groundwater Elevations - Piezometer P-05-07D



Pre-permitting
Environmental/Socio - Economic
Data Report Series

Report Series D:
Groundwater Hydrology

Section 3
Hourly Groundwater Elevations
Piezometer P-05-07D

Legend

◆ P-05-07D (21728 Data Points)



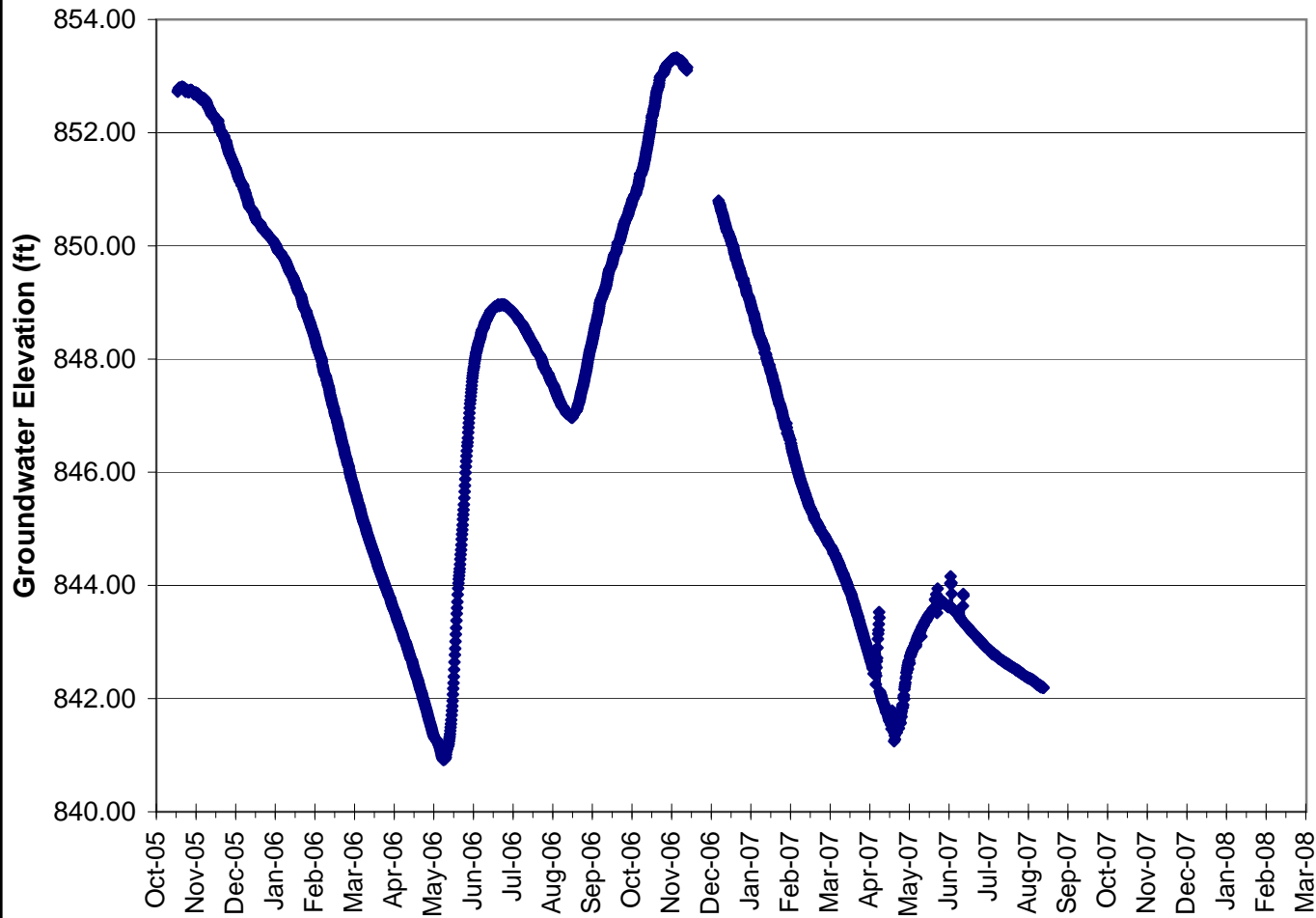
Project: 7126

Date: June 16, 2008

Version: 1

Author: WMC-LC

Hourly Groundwater Elevations - Piezometer P-05-27S



Pre-permitting
Environmental/Socio - Economic
Data Report Series

Report Series D:
Groundwater Hydrology

Section 3
Hourly Groundwater Elevations
Piezometer P-05-27S

Legend

◆ P-05-27S (2570 Data Points)



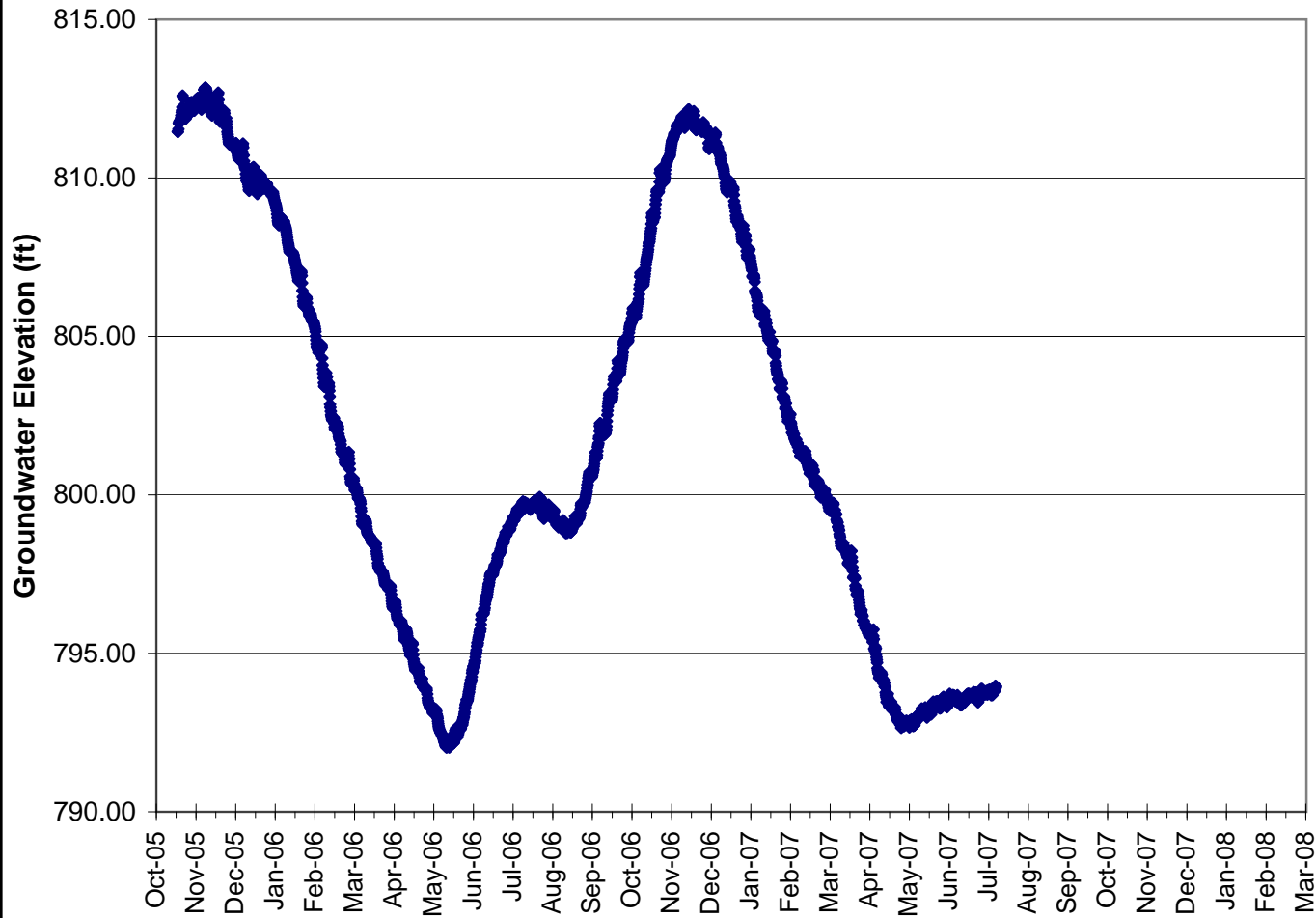
Project: 7126

Date: June 16, 2008

Version: 1

Author: WMC-LC

Hourly Groundwater Elevations - Piezometer P-05-27D



Pre-permitting
Environmental/Socio - Economic
Data Report Series

Report Series D:
Groundwater Hydrology

Section 3
Hourly Groundwater Elevations
Piezometer P-05-27D

Legend

◆ P-05-27D (2520 Data Points)



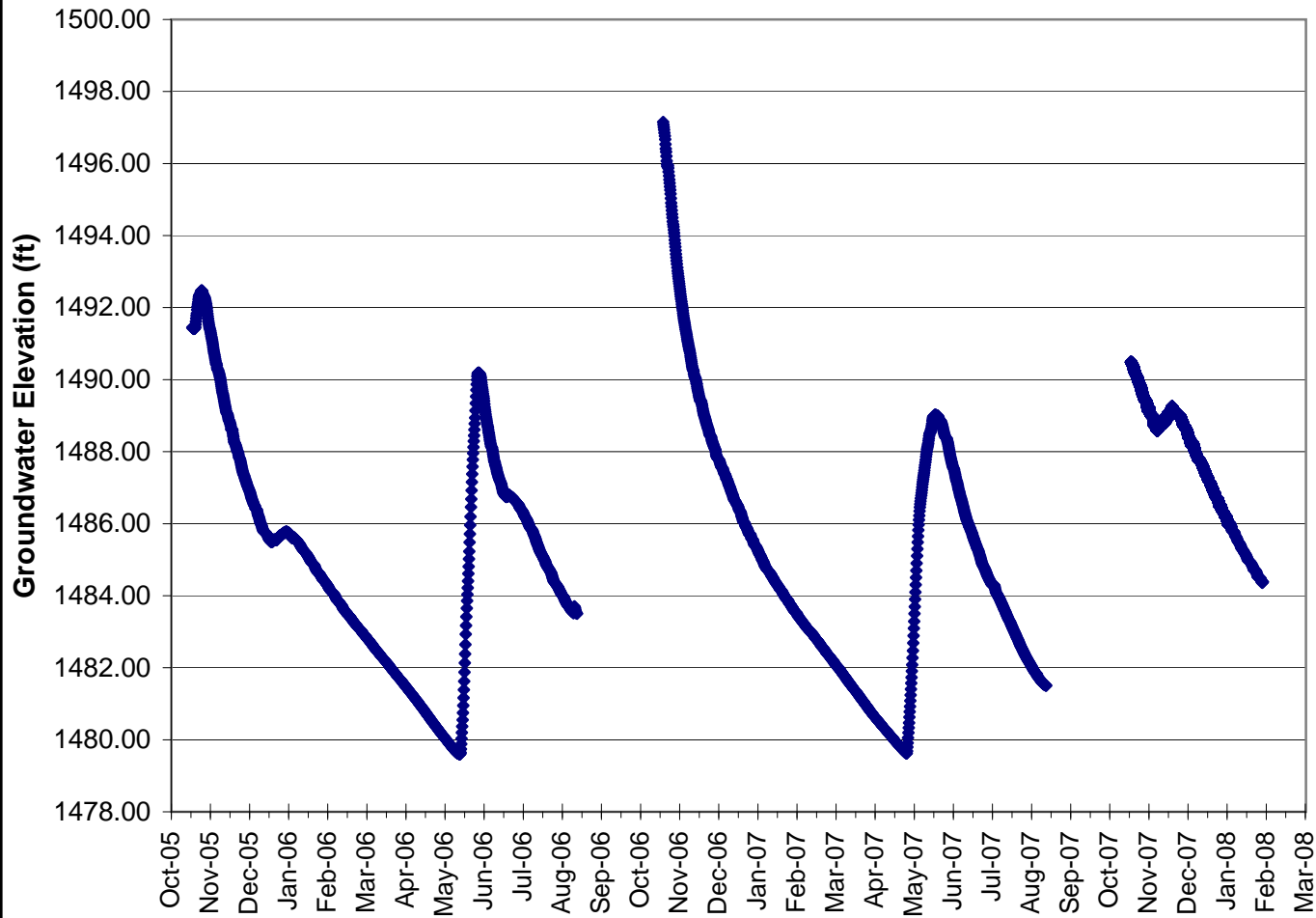
Project: 7126

Date: June 16, 2008

Version: 1

Author: WMC-LC

Hourly Groundwater Elevations - Piezometer GH05-58



Pre-permitting
Environmental/Socio - Economic
Data Report Series

Report Series D:
Groundwater Hydrology

Section 3
Hourly Groundwater Elevations
Piezometer GH05-58

Legend

◆ GH05-58 (21184 Data Points)



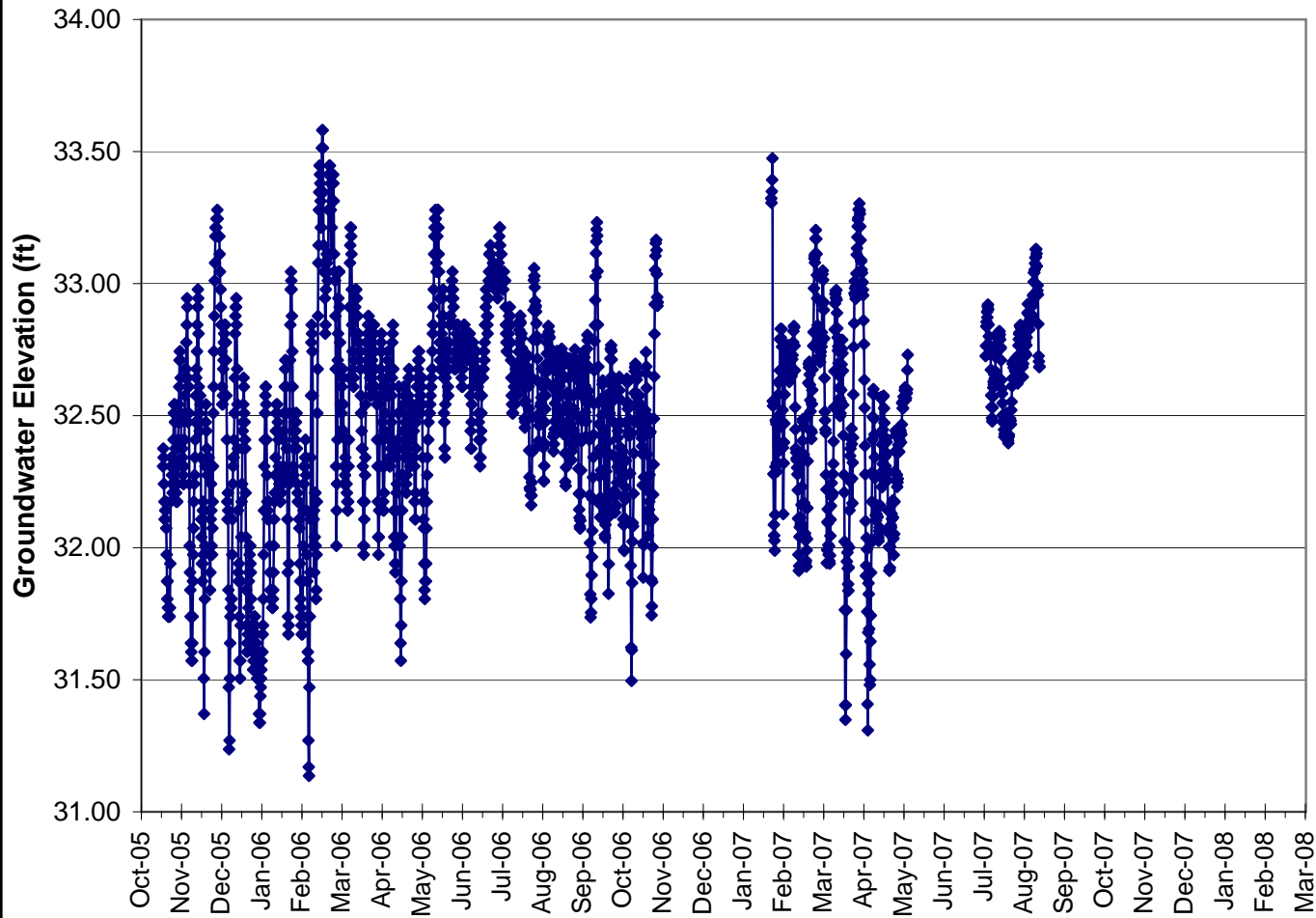
Project: 7126

Date: June 16, 2008

Version: 1

Author: WMC-LC

Hourly Groundwater Elevations - Barologger



Pre-permitting
Environmental/Socio - Economic
Data Report Series

Report Series D:
Groundwater Hydrology

Section 3
Hourly Groundwater Elevations
Barologger

Legend

◆ Barologger (2086 Data Points)



Project: 7126

Date: June 16, 2008

Version: 1

Author: WMC-LC