



Pre-Permitting Environmental / Socio-Economic Data Report Series

Report Series D- Groundwater Hydrology Figures

Report D-7 (Figures) Seep Sample Site Plan

Submitted to the Pebble Limited Partnership June 2008

Preliminary data. Do not cite or quote.

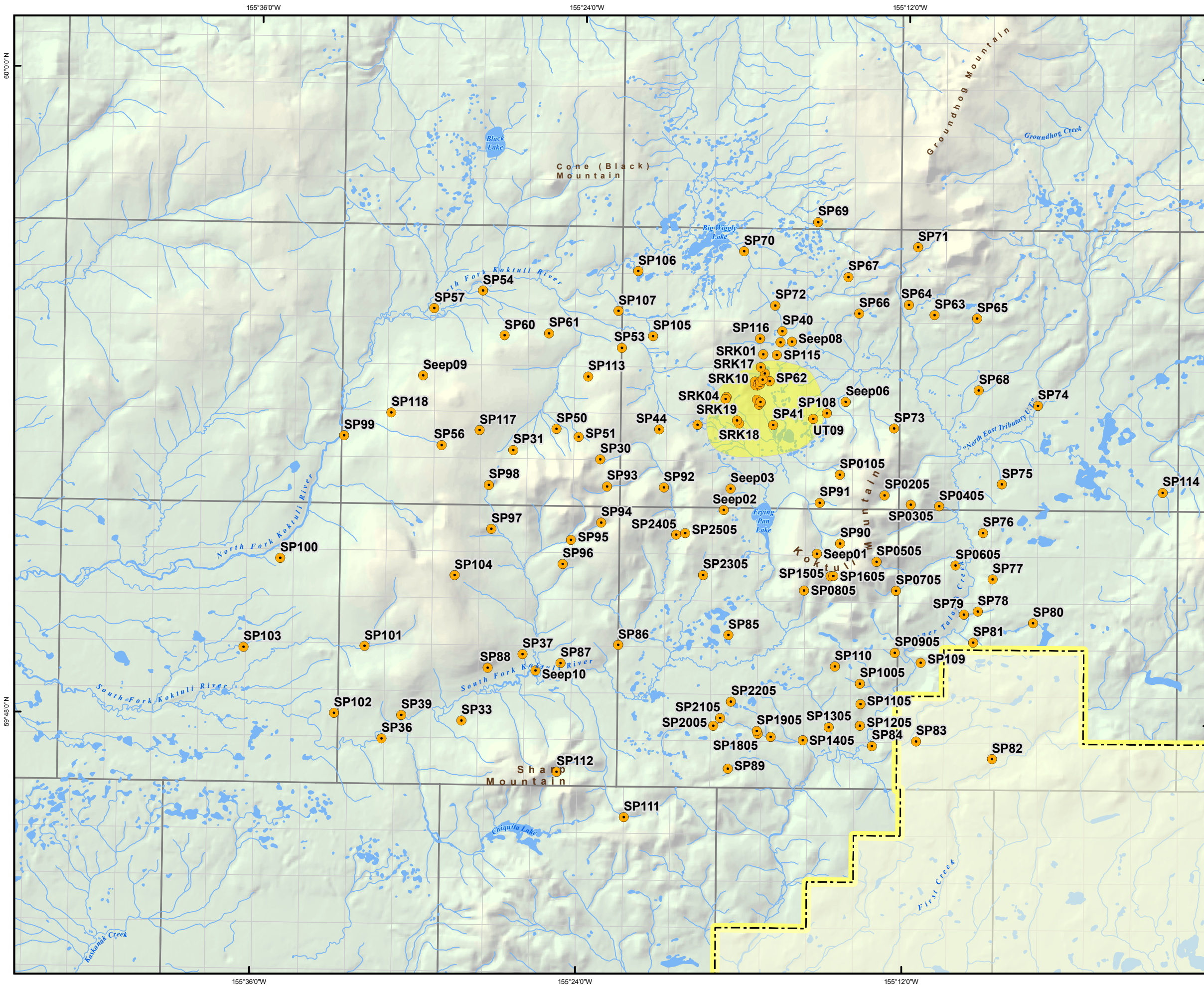
The Pebble Partnership is providing environmental and socio-economic baseline data collected to inform the development of the Pebble Project to state and federal agencies, project stakeholders and the general public prior to project permitting as part of its commitment to full and open disclosure.

A comprehensive Environmental Baseline Document (EBD) will subsequently be prepared and appended to future project permit applications. The EBD will also be made publicly available when complete.

**PRE-PERMITTING
ENVIRONMENTAL SOCIOECONOMIC DATA
REPORT SERIES**

**REPORT SERIES D:
GROUNDWATER HYDROLOGY**

SECTION 7 – SEEP SAMPLE SITE PLAN








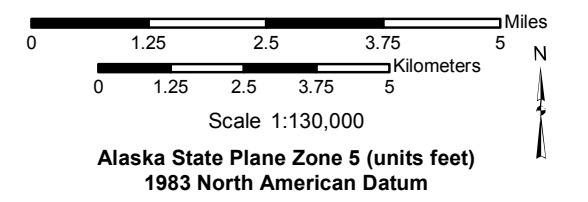
Pre-permitting
Environmental/Socioeconomic
Data Report Series

Report Series D:
Groundwater Hydrology

Seep Sample Sites

Legend

-  Seep Sample Site
-  Stream
-  Waterbody
-  General Deposit Location
-  Village Corporation Boundary (Private Land)



File: HDR_Seep_SampleSites_V01.mxd	Date: 20 June 2008
Version: 1	Author: HDR Alaska