



Pre-Permitting Environmental / Socio-Economic Data Report Series

Report Series J- Marine Nearshore Fish and Benthic Invertebrates

Report J-10 Study Area and Sampling Location Figures 2004-2007

Submitted to the Alaska Department of Natural Resources August 2009

Preliminary data. Do not cite or quote.

The Pebble Partnership is providing environmental and socio-economic baseline data collected to inform the development of the Pebble Project to state and federal agencies, project stakeholders and the general public prior to project permitting as part of its commitment to full and open disclosure.

A comprehensive Environmental Baseline Document (EBD) will subsequently be prepared and appended to future project permit applications. The EBD will also be made publicly available when complete.

Collected for the Pebble Partnership by:



Pentec Environmental
120 Third Ave. South,
Suite 110
Edmonds, Washington 98020



Bristol Environmental &
Engineering Services
Corporation
111 W. 16th Ave., Third Floor
Anchorage, Alaska 99502



University of Alaska –
Fairbanks
P.O. Box 757500
Fairbanks, Alaska 99775

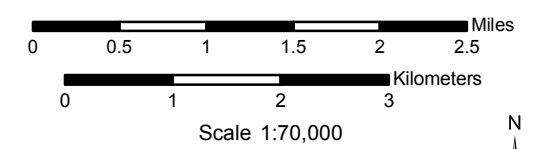
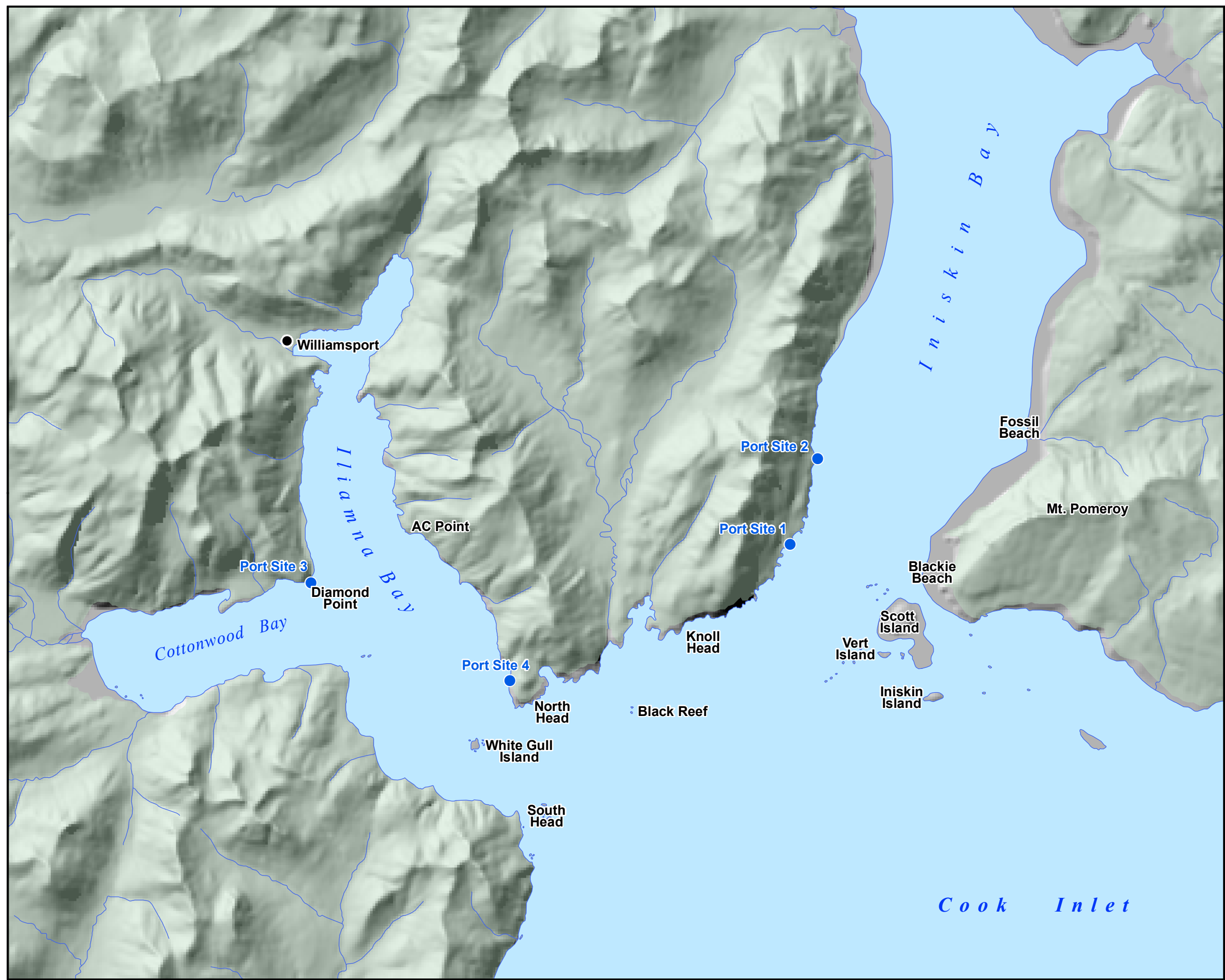
RWJ Consulting
22415 Norton Court
Chugiak, Alaska 99567

**Figure J-1
Marine Nearshore Fish and Benthic
Invertebrate Study Area**

**DRAFT
Preliminary Data Only
Do Not Cite or Quote**

Legend

- Potential Port Site



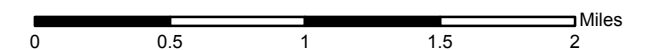
Alaska State Plane Zone 5 (units feet)
1983 North American Datum

Figure J-2
Marine Benthos and Nearshore
Intertidal and Subtidal Sampling Locations
2004, 2005, 2006

DRAFT
Preliminary Data Only
Do Not Cite or Quote

Legend

- ▲ Subtidal Sediment Sampling Locations
- Intertidal Sediment Sampling Locations (yrs)**
- Chemistry/Infauna (2004)
- Chemistry/Infauna (2005)
- Chemistry/Infauna (2004, 2005)
- Infauna Sample (2004)
- Mega-Infauna (2005)
- Intertidal Epibiota Sampling Locations (yrs)**
- Epibenthic Macrobiota (2004, 2005)
- Epibenthic Macrobiota (2004, 2005, 2006)
- Epibenthic Macrobiota (2005)
- Diver Transects
- Potential Port Site



Scale 1:45,000



Alaska State Plane Zone 5 (units feet)
1983 North American Datum

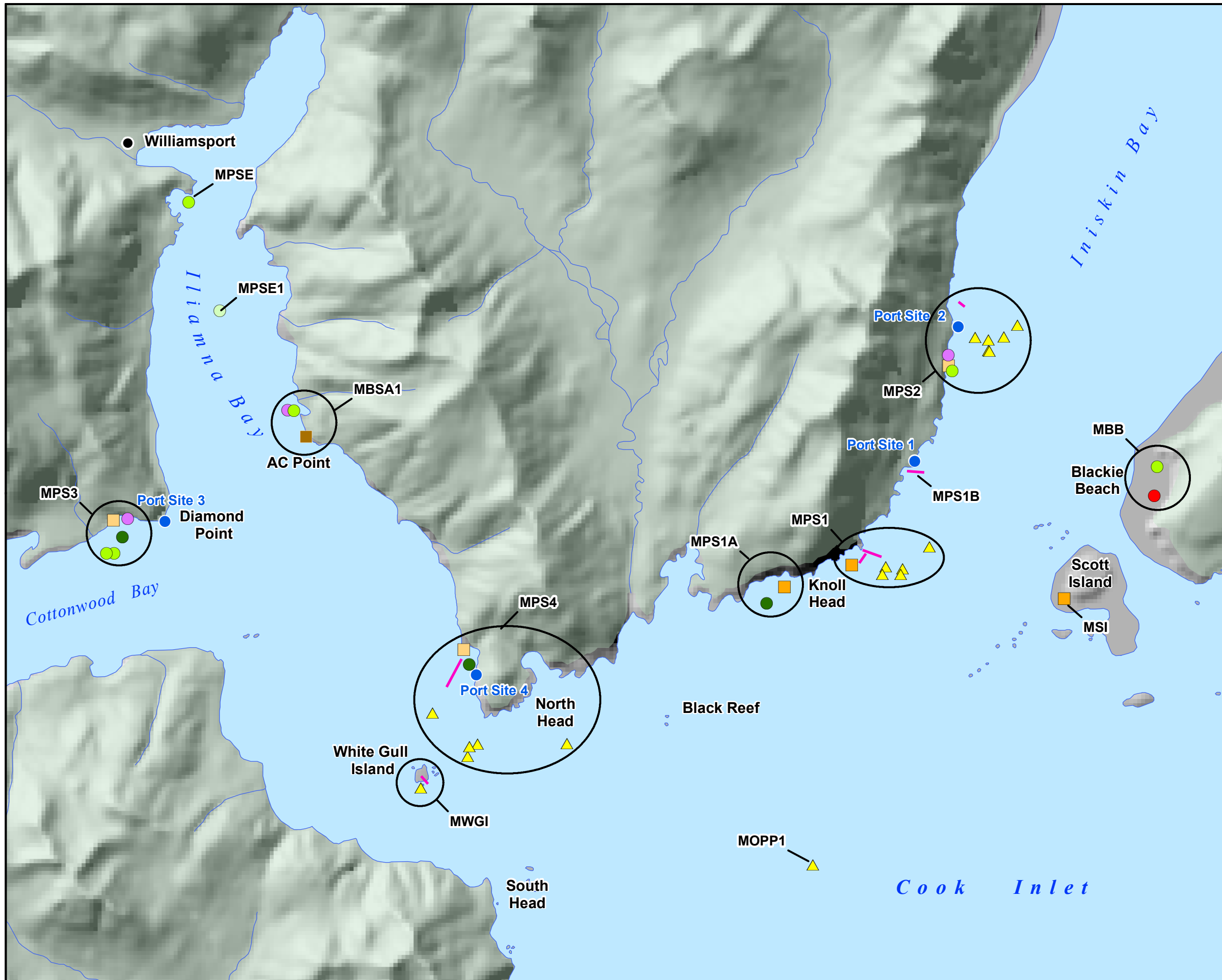


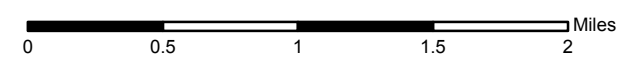
Figure J-3
Marine Benthos and Nearshore
Beach Seine and Trawl Locations

DRAFT
Preliminary Data Only
Do Not Cite or Quote

Legend

Beach Seine and Trawl Locations

- Beach Seine ('05, '06)
- Beach Seine ('04, '05, '06)
- Trawl ('05, '06)
- Trawl ('04, '05, '06)
- Potential Port Site



Scale 1:45,000



Alaska State Plane Zone 5 (units feet)
 1983 North American Datum