



Pre-Permitting Environmental / Socio-Economic Data Report Series

Report Series N- Terrestrial Wildlife and Habitats

Report N-4 Landbird and Shorebird Figures 2004-2007

Submitted to the Alaska Department of Natural Resources January 2010

Preliminary data. Do not cite or quote.

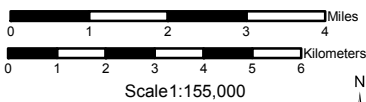
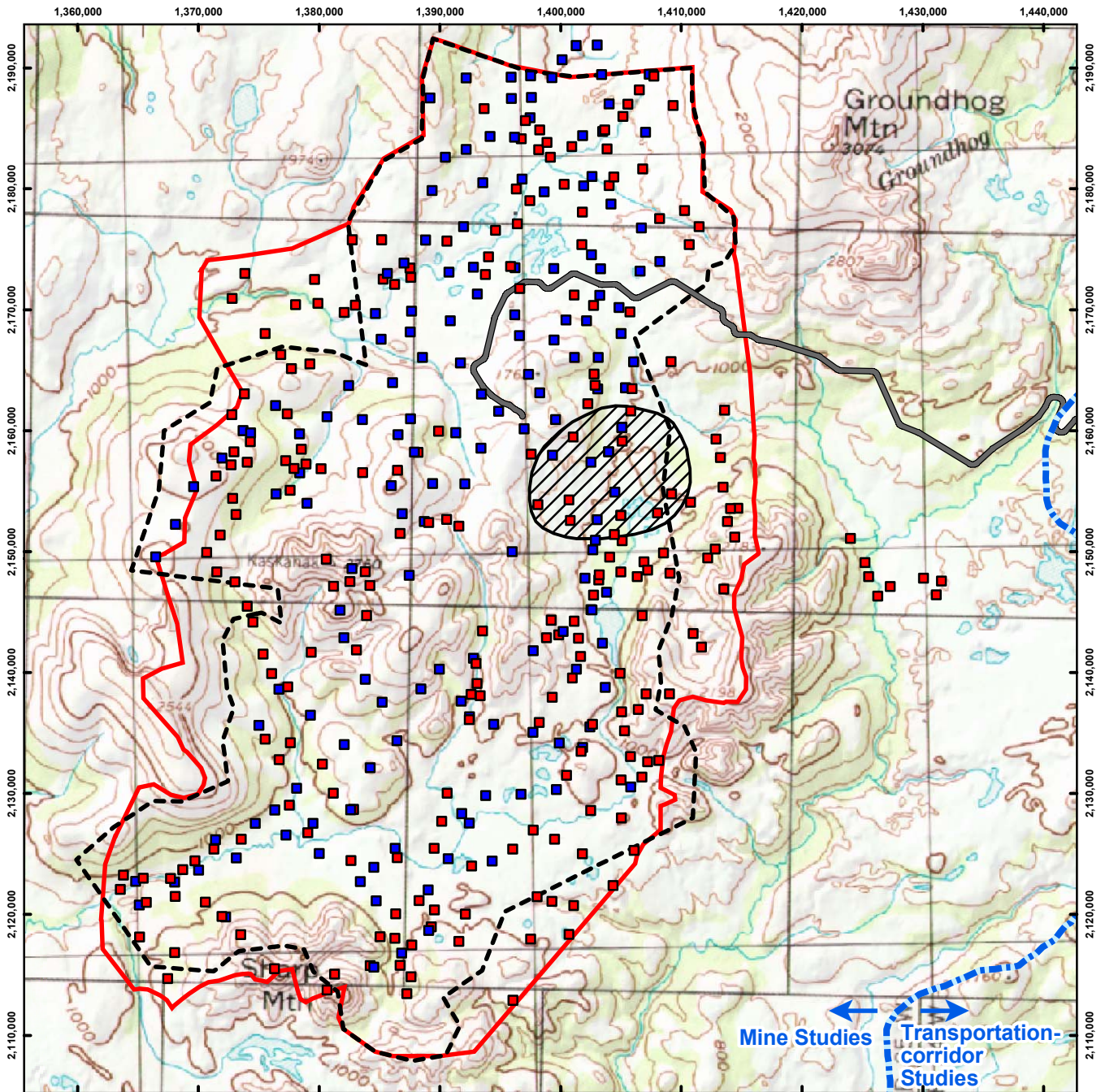
The Pebble Partnership is providing environmental and socio-economic baseline data collected to inform the development of the Pebble Project to state and federal agencies, project stakeholders and the general public prior to project permitting as part of its commitment to full and open disclosure.

A comprehensive Environmental Baseline Document (EBD) will subsequently be prepared and appended to future project permit applications. The EBD will also be made publicly available when complete.

Collected for the Pebble Partnership by:



ABR, Inc.
P.O. Box 24068
Anchorage, AK 99524



Alaska State Plane Zone 5 (units feet)
1983 North American Datum

Legend

- 2004 Point-count Location
- 2005 Point-count Location
- 2004 Survey Area
- 2005 Survey Area
- General Deposit Location
- Possible Road Alignment



Figure N-4.1
Landbird/Shorebird
Point-count Locations,
Mine Study Area,
2004 and 2005

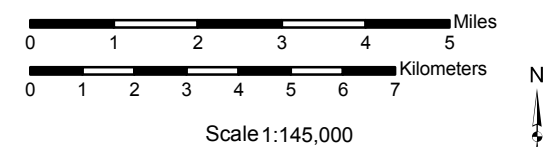
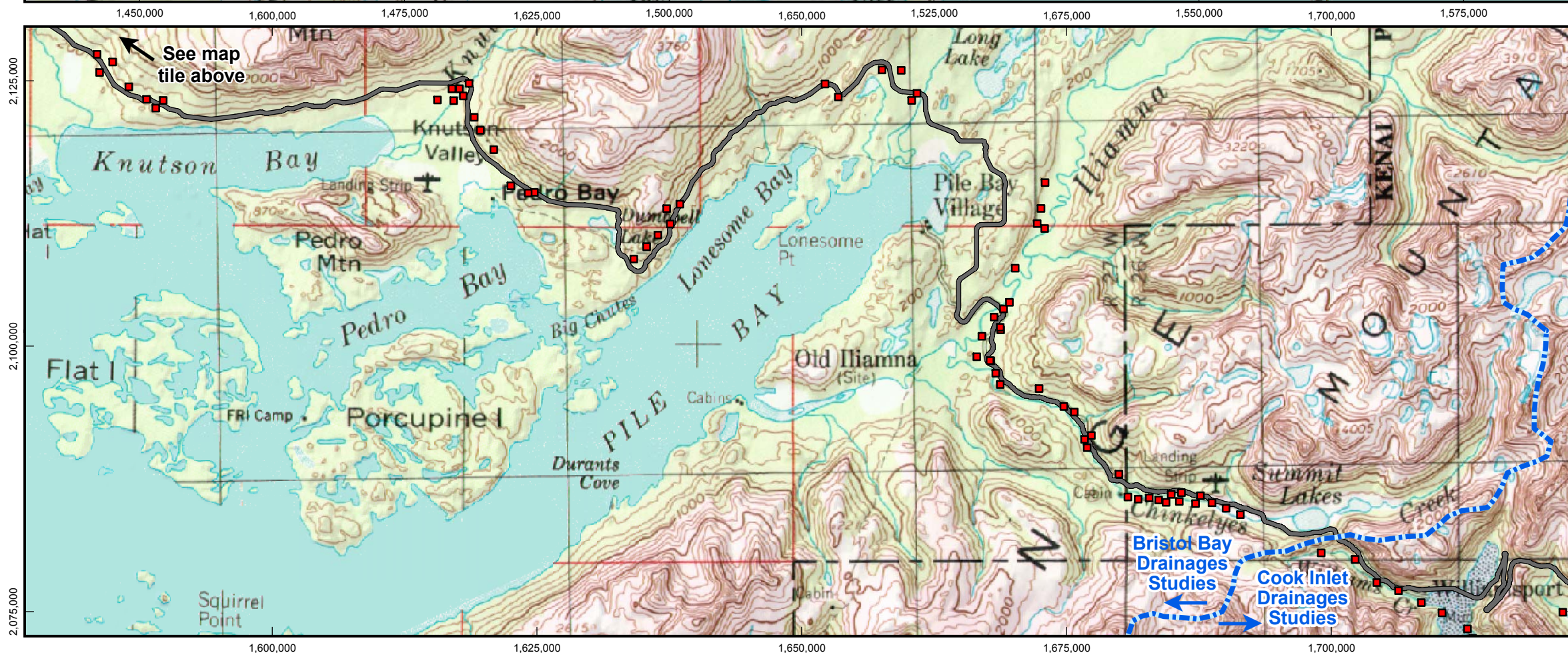
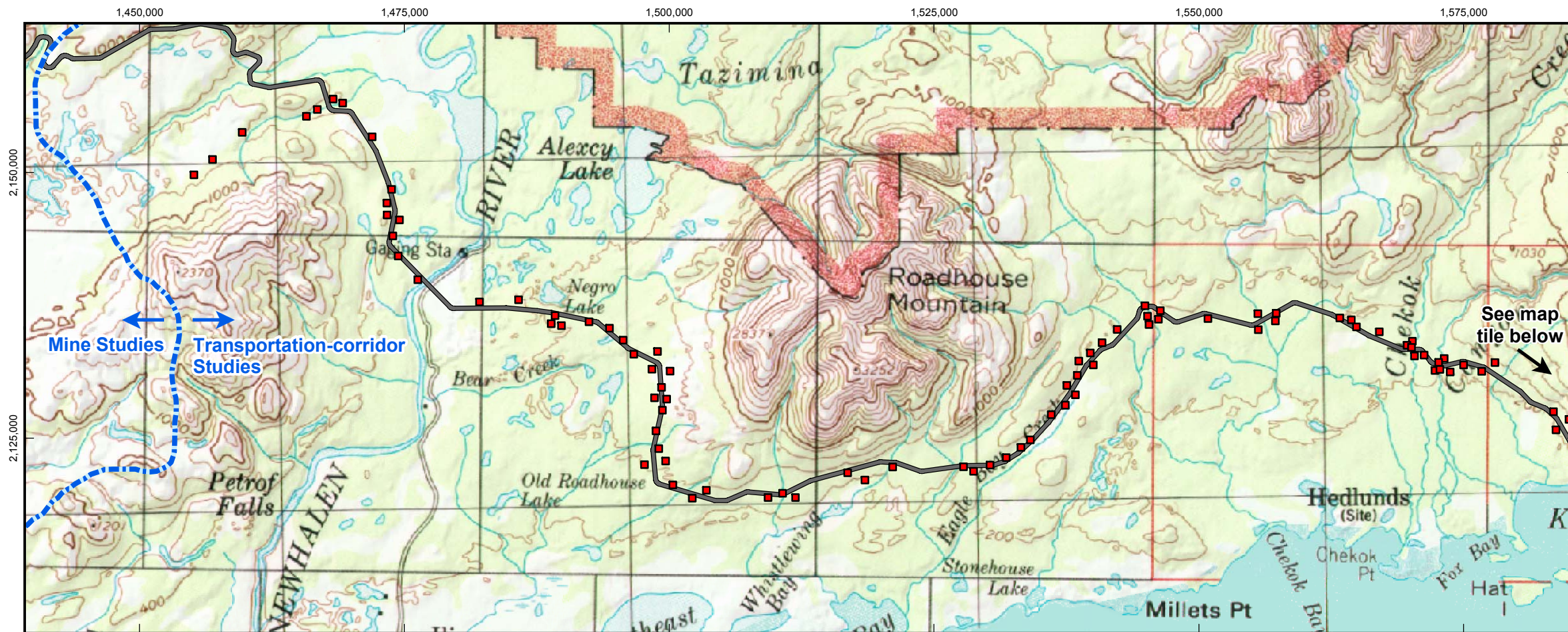
Preliminary Data Only
Do Not Cite or Quote

Figure N-4.2
Landbird/Shorebird
Point-count Locations,
Bristol Bay Drainages,
Transportation-corridor
Study Area, 2005

Preliminary Data Only
 Do Not Cite or Quote

Legend

- Point-count Location
- Possible Road Alignment



Alaska State Plane Zone 5 (units feet)
 1983 North American Datum

