



Pre-Permitting Environmental / Socio-Economic Data Report Series

Report Series N- Terrestrial Wildlife and Habitats

Report N-5 Iliamna Lake Harbor Seal Figures 2004-2007

Submitted to the Alaska Department of Natural Resources January 2010

Preliminary data. Do not cite or quote.

The Pebble Partnership is providing environmental and socio-economic baseline data collected to inform the development of the Pebble Project to state and federal agencies, project stakeholders and the general public prior to project permitting as part of its commitment to full and open disclosure.

A comprehensive Environmental Baseline Document (EBD) will subsequently be prepared and appended to future project permit applications. The EBD will also be made publicly available when complete.

Collected for the Pebble Partnership by:



ABR, Inc.
P.O. Box 24068
Anchorage, AK 99524




Figure N-5.1
Harbor Seal Haulouts,
Iliamna Lake, 2005
 Preliminary Data Only
 Do Not Cite or Quote

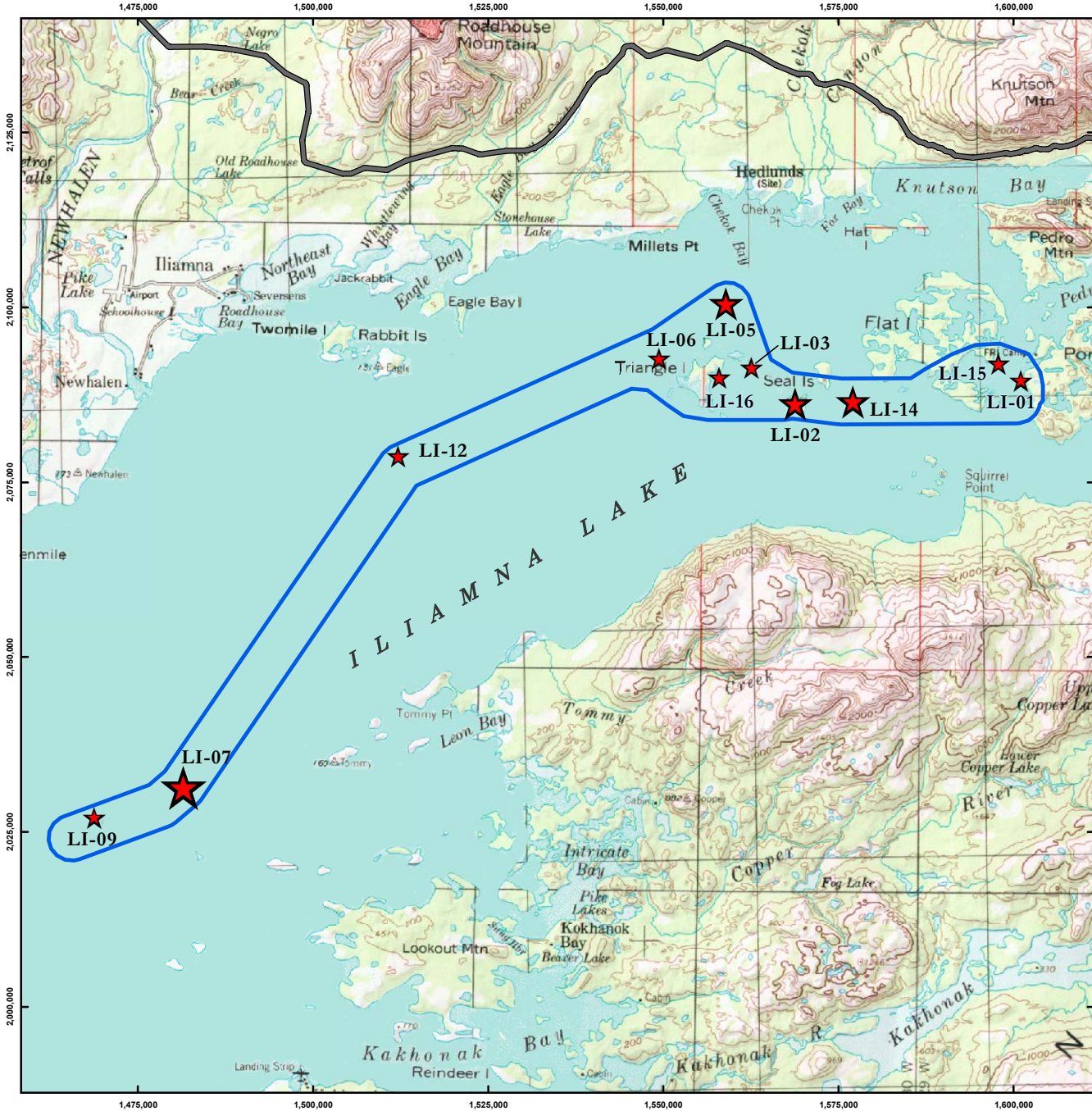
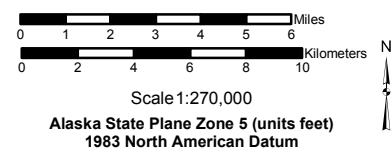
Legend

Mean Number of Seals

-  0 – 5
-  6 – 15
-  16 – 30

 2005 Iliamna Lake Seal Survey Area

 Possible Road Alignment



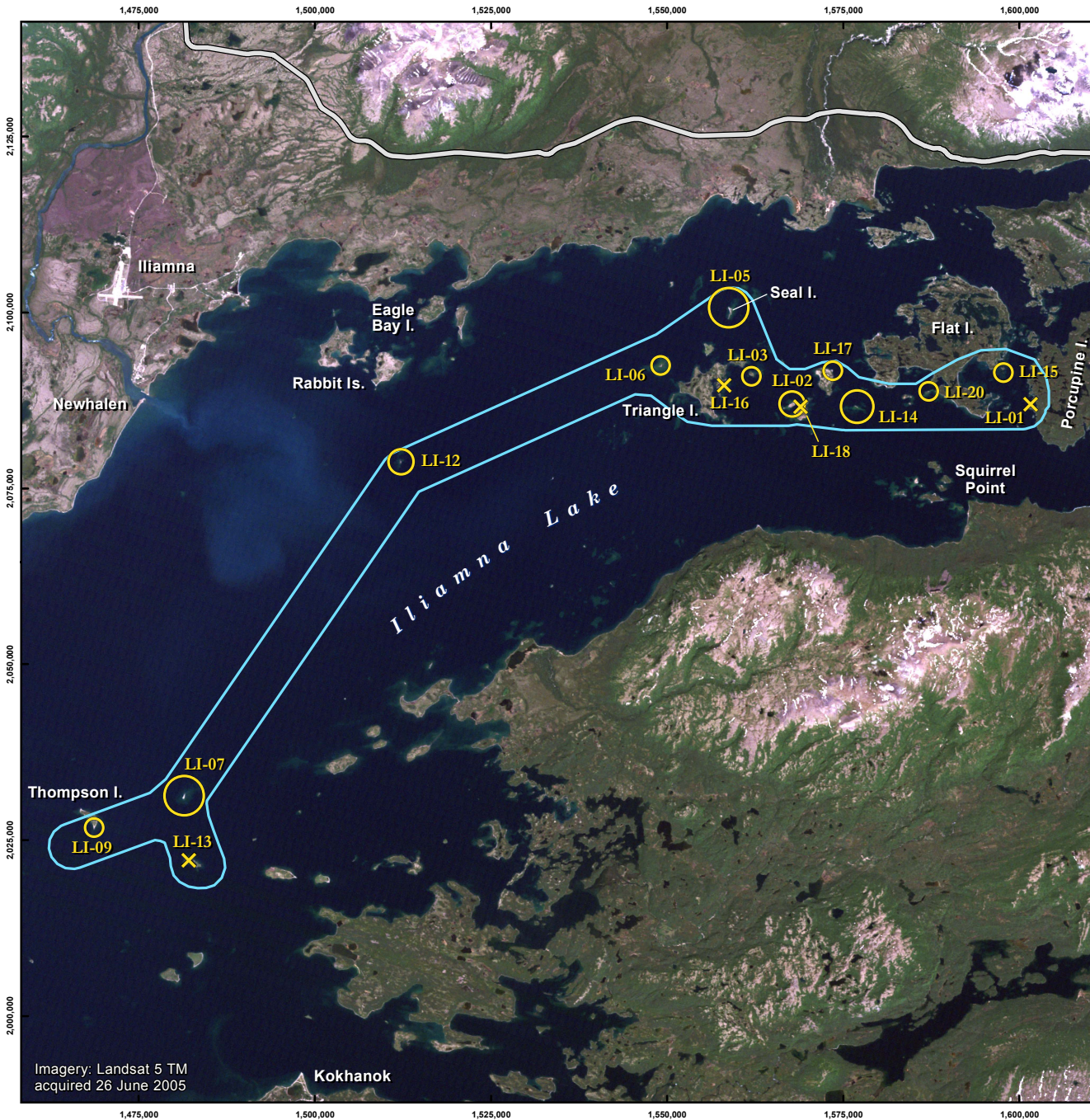


Figure N-5.2
Harbor Seal Haulouts,
Iliamna Lake, 2007

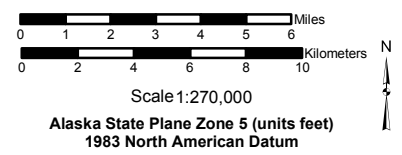
Preliminary Data Only
Do Not Cite or Quote

Legend

Mean Number of Seals

- × 0
- 0.1 – 5.0
- 5.1 – 15.0
- 15.1 – 40.0
- 40.1 – 60.0

- 2007 Iliamna Lake Seal Survey Area
- Possible Road Alignment



File: 16-8-2_SealsIliamnaL_2007_PebbleCEBD_v02.mxd	Date: Dec. 29, 2009
Version: 2	Author: ABR-AZC

Imagery: Landsat 5 TM
acquired 26 June 2005

Winter 2004/2005

Winter 2005/2006

Late Winter/Breakup 2005

Late Winter/Breakup 2006

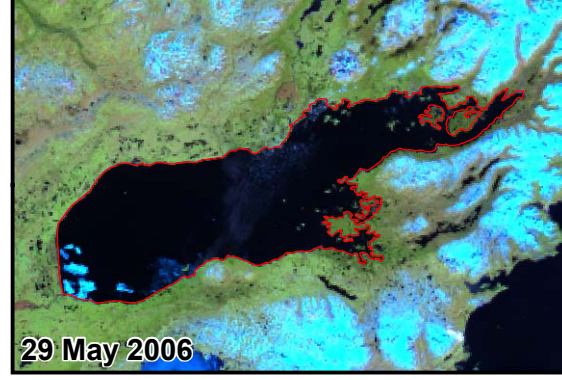
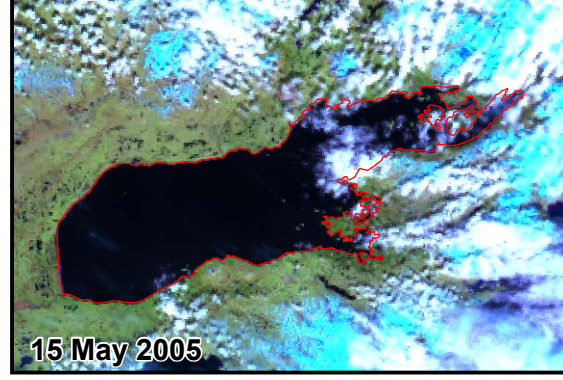
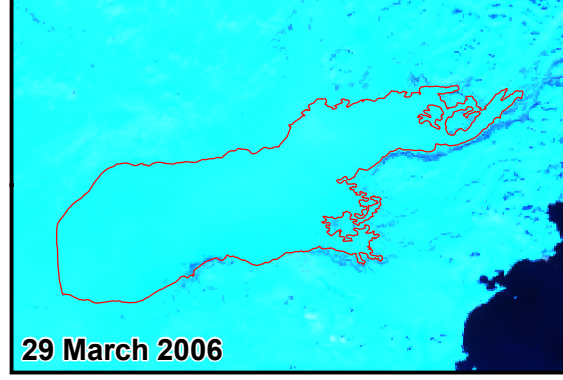
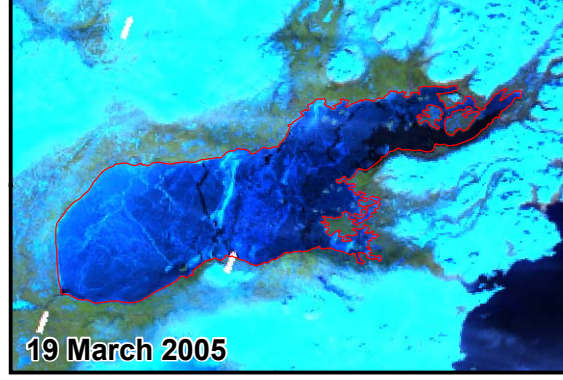
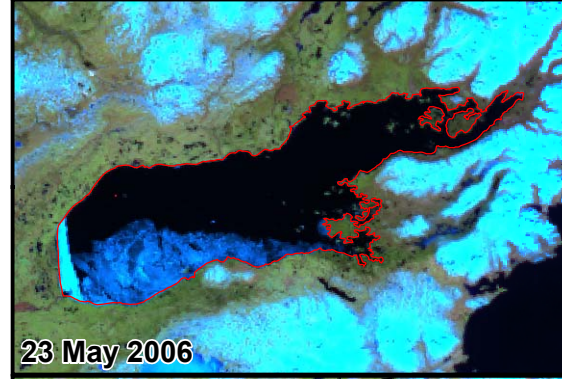
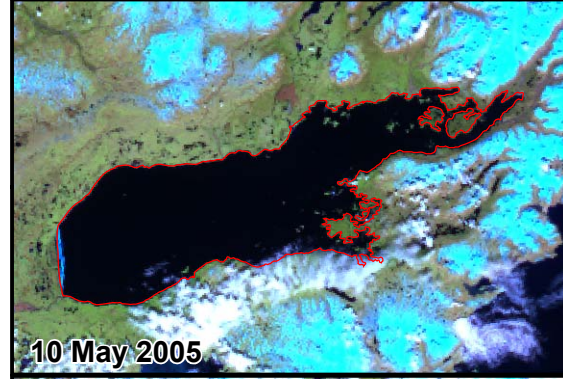
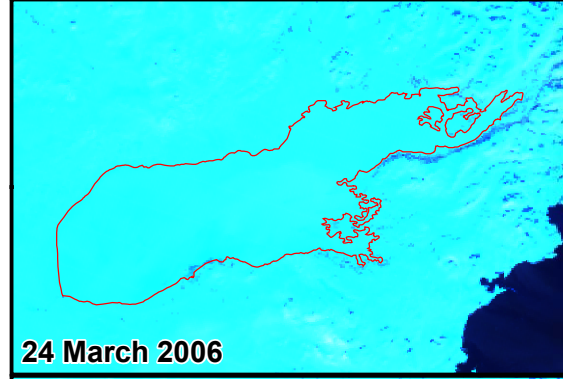
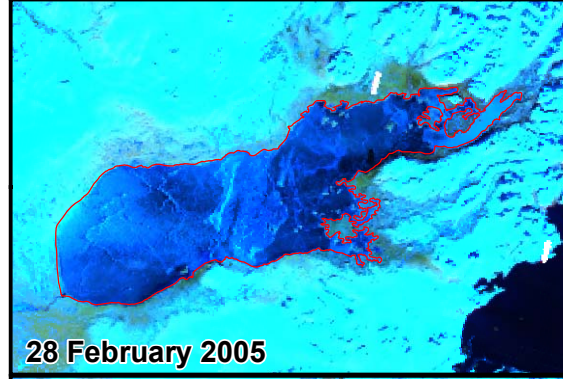
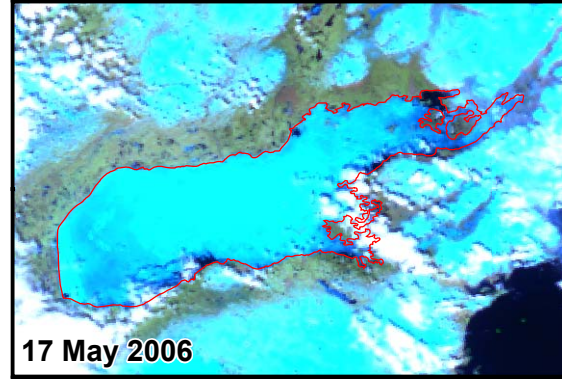
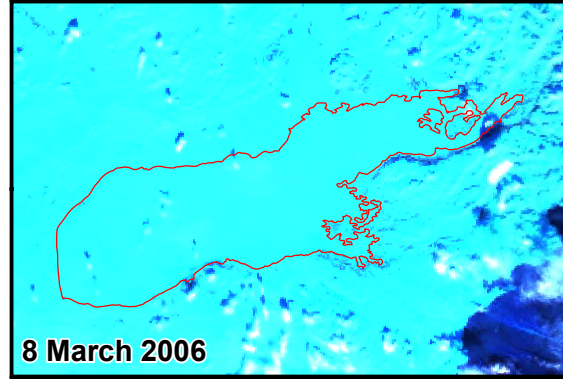
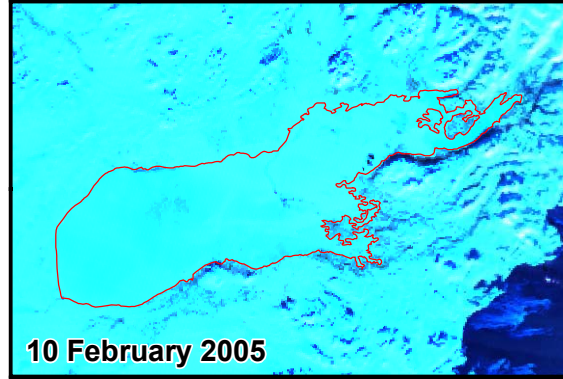
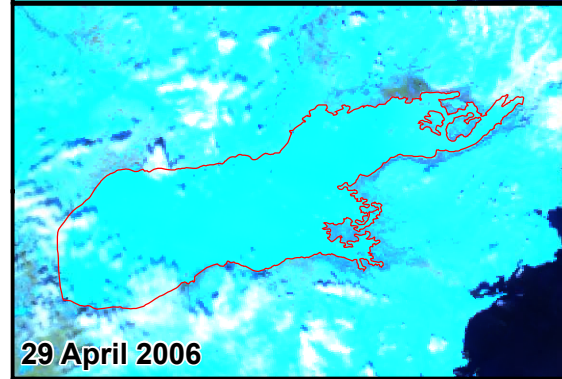
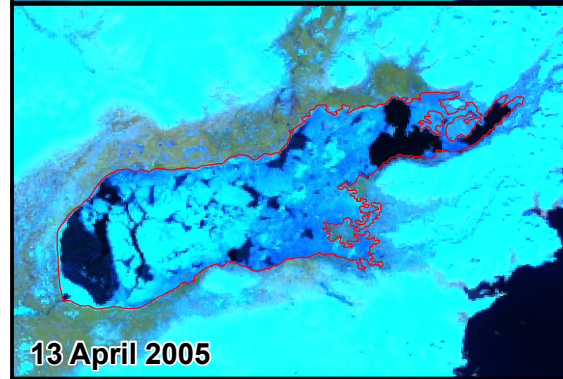
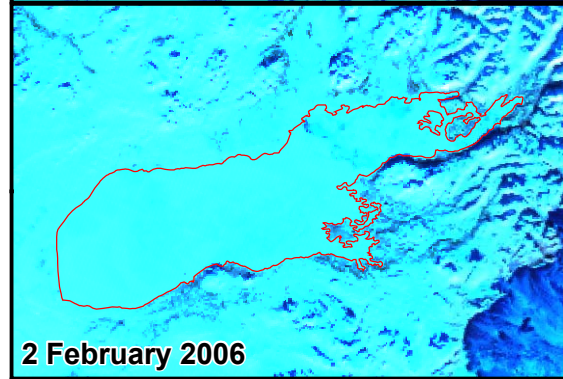
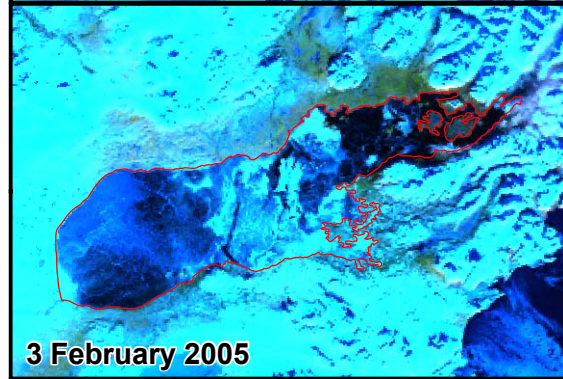
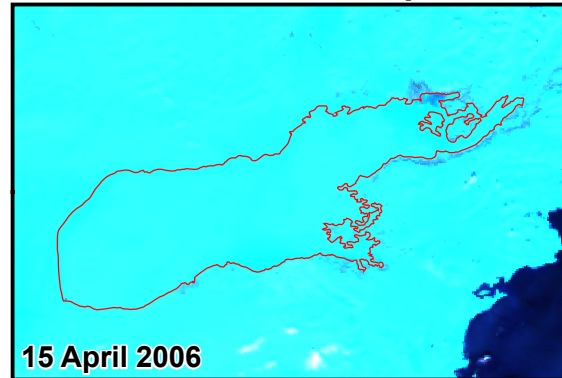
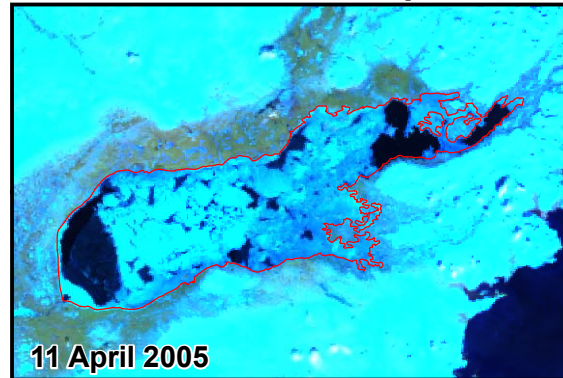
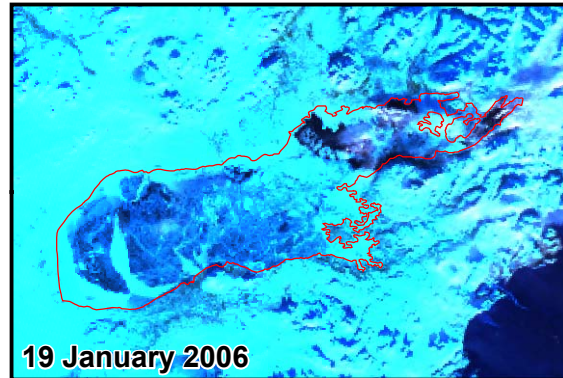
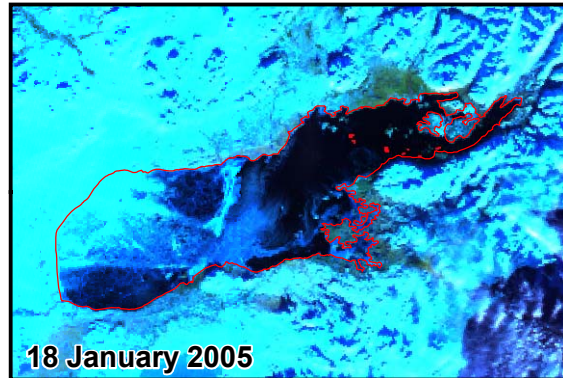

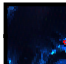
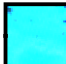


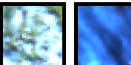


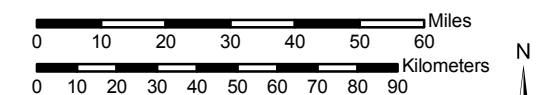
Figure N-5.3
Satellite Imagery of Ice Cover
on Iliamna Lake, Winter
2004/2005 and 2005/2006

Preliminary Data Only
 Do Not Cite or Quote

Legend

-  Iliamna Lake Outline
-  Open Water
-  Snow-covered Land or Snow-covered Lake Ice
-  Snow-free Lake Ice
-  Snow-Free Land (Vegetated)
-  Clouds

Images are 500-m false color composites (Bands 6/2/1) produced from corrected reflectance swaths acquired by the Moderate Resolution Imaging Spectroradiometer (MODIS) sensor onboard the NASA Terra platform. Data acquired from the Goddard Earth Sciences Data and Information Services Center.



Scale 1:1,900,000
 Alaska State Plane Zone 5 (units feet)
 1983 North American Datum