



Pre-Permitting Environmental / Socio-Economic Data Report Series

Report Series N- Terrestrial Wildlife and Habitats

Report N-6 Wood Frog Figures 2004-2007

Submitted to the Alaska Department of Natural Resources January 2010

Preliminary data. Do not cite or quote.

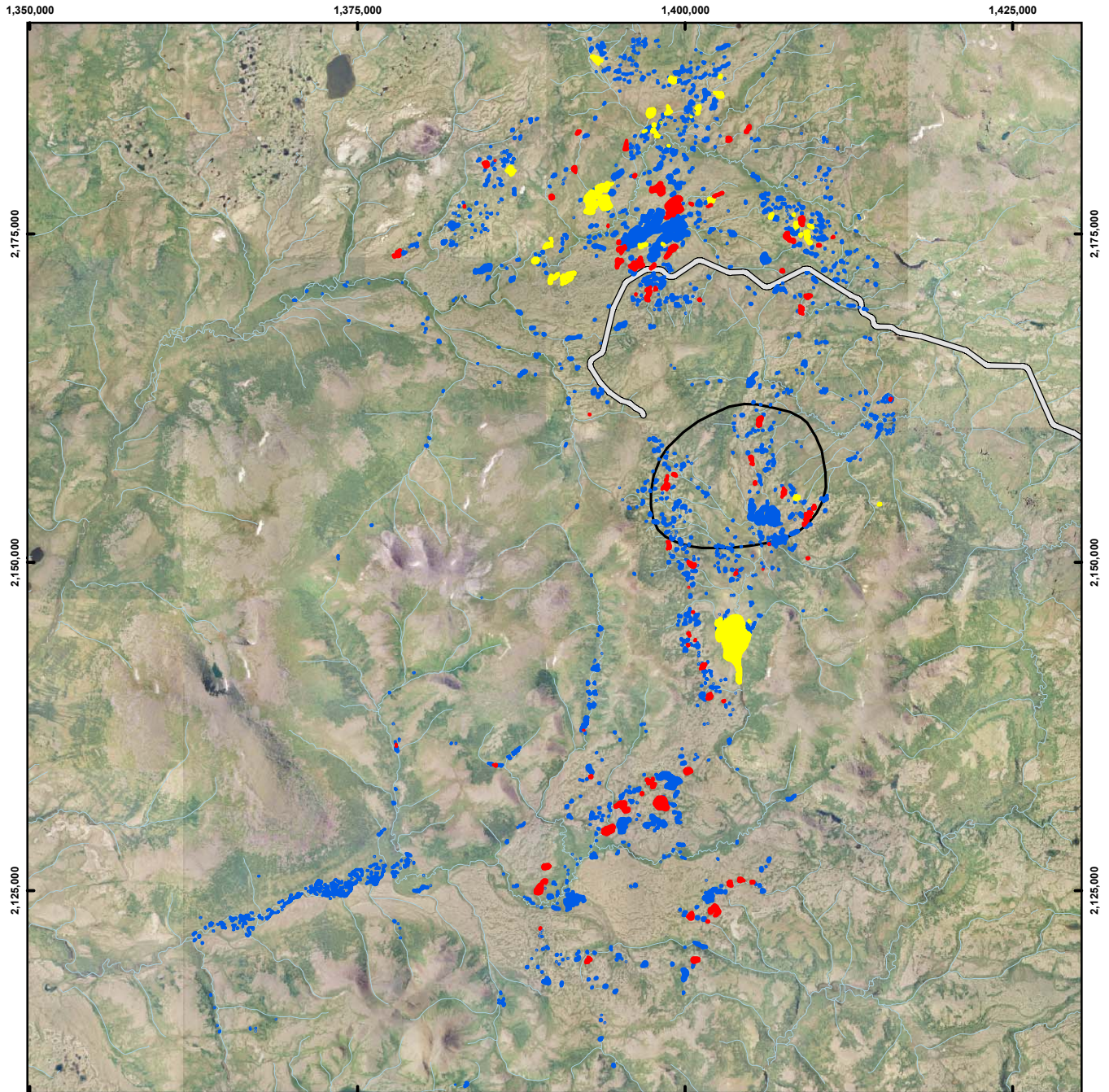
The Pebble Partnership is providing environmental and socio-economic baseline data collected to inform the development of the Pebble Project to state and federal agencies, project stakeholders and the general public prior to project permitting as part of its commitment to full and open disclosure.

A comprehensive Environmental Baseline Document (EBD) will subsequently be prepared and appended to future project permit applications. The EBD will also be made publicly available when complete.

Collected for the Pebble Partnership by:



ABR, Inc.
P.O. Box 24068
Anchorage, AK 99524



0 1 2 3 Miles
0 1 2 3 4 5 Kilometers

Scale 1:143,000

Alaska State Plane Zone 5 (units feet)
1983 North American Datum

Background imagery is a resampled eight foot pixel image of all Eagle orthophotography for the Pebble mine area based on July 2004 photography. Image credit: Kodiak Mapping Inc., Eagle Mapping Ltd., Resource Data, Inc.

Legend






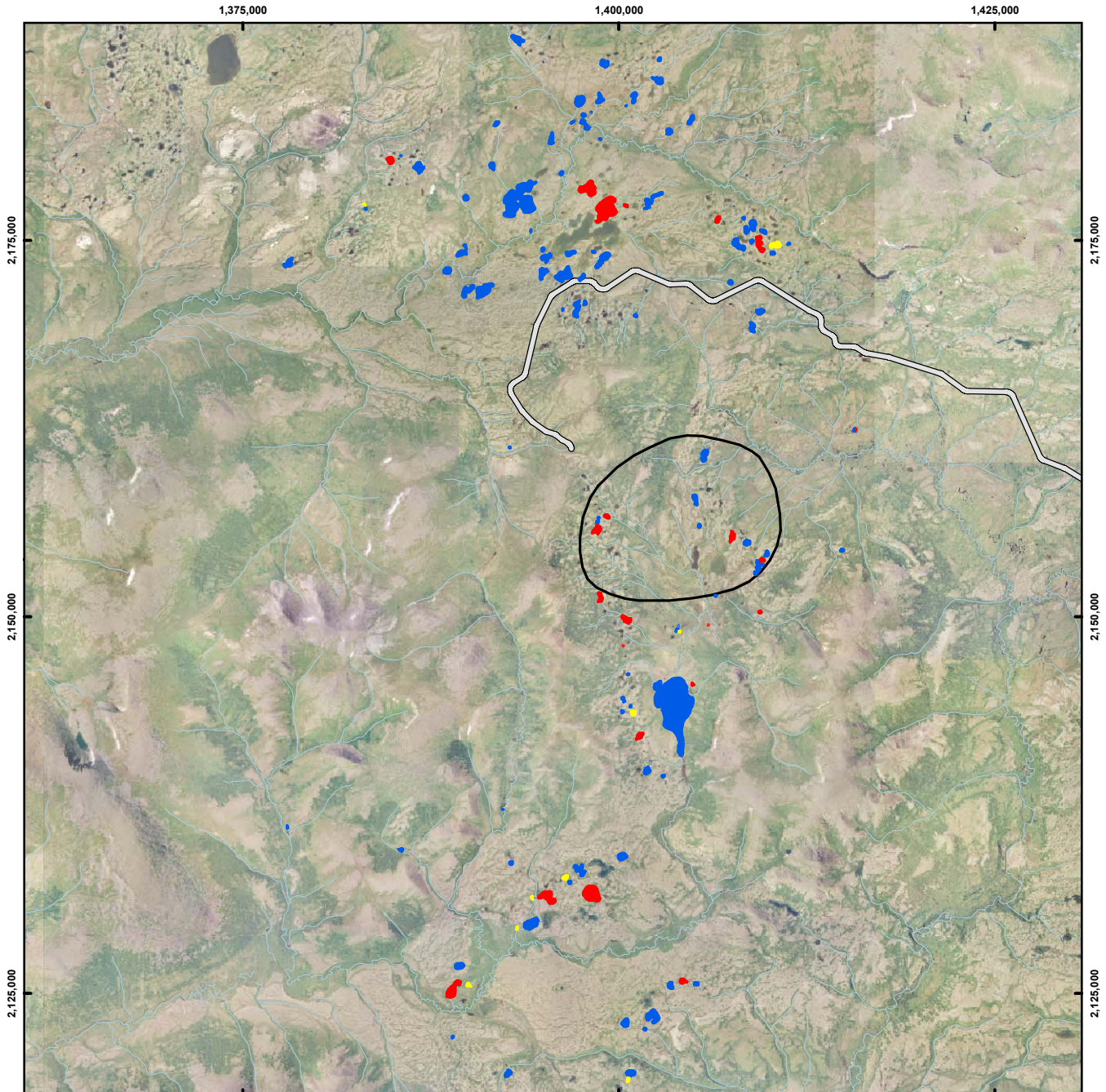
-  Surveyed Twice
-  Surveyed Once
-  Not Surveyed
-  General Deposit Location
-  Possible Road Alignment



Figure N-6.1
Waterbodies Surveyed for
Breeding Wood Frogs,
Mine Study Area, 2007

Preliminary Data Only
Do Not Cite or Quote



Scale 1:125,000

Alaska State Plane Zone 5 (units feet)
1983 North American Datum

Background imagery is a resampled eight foot pixel image of all Eagle orthophotography for the Pebble mine area based on July 2004 photography. Image credit: Kodiak Mapping Inc., Eagle Mapping Ltd., Resource Data, Inc.

Legend

- Frog(s) Detected on Survey
- Frog(s) Detected as Incidental Observations
- No Frog(s) Detected on Survey
- General Deposit Location
- Possible Road Alignment

Figure N-6.2
Calling Wood Frog Observations,
Mine Study Area, 2007

Preliminary Data Only
Do Not Cite or Quote