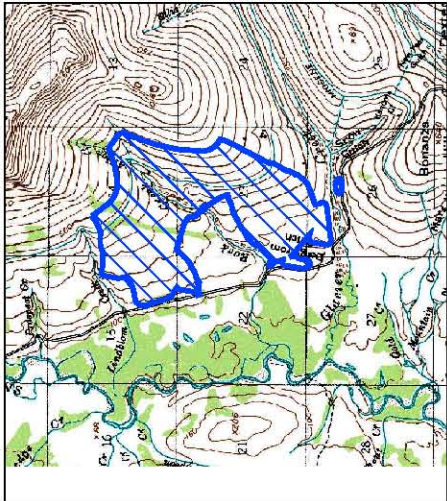


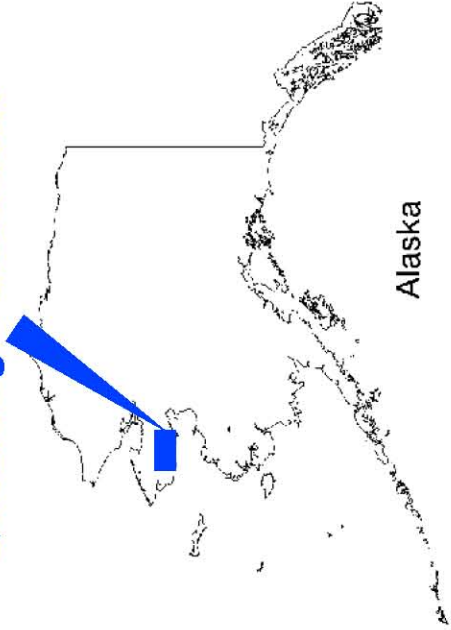
Appendix A

Figures

Rock Creek Site

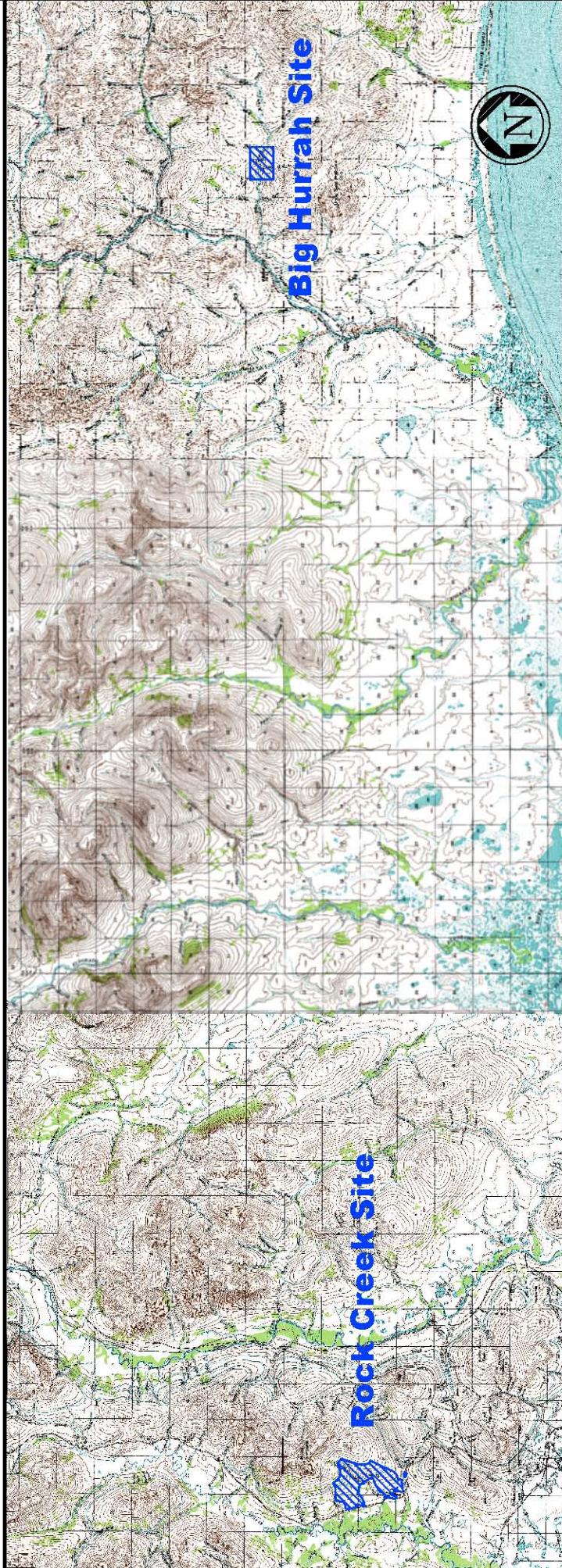
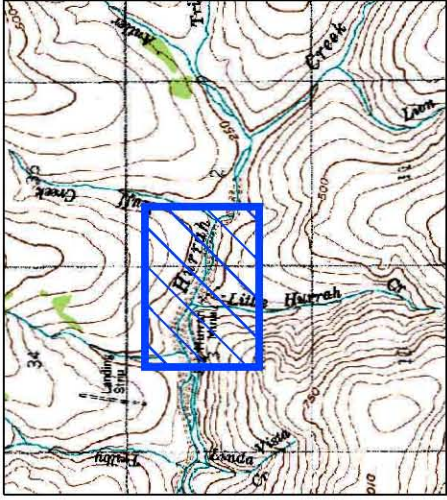


Quadrangle Locations



Alaska

Big Hurrah Site



Rock Creek Site

Big Hurrah Site

Notes

1. The contour intervals are at 50 ft
2. Base map is USGS quadrangle (Nome (C-1) and Solomon (C5-C6) Alaska (1950))



Prepared For:



Prepared By:



Revision Date: 30 April 2008

Scale: As shown

Project Number: 175004

Drawing Name: 175004_Fig-1_Loc_Pln_Alt_2008May13.dwg

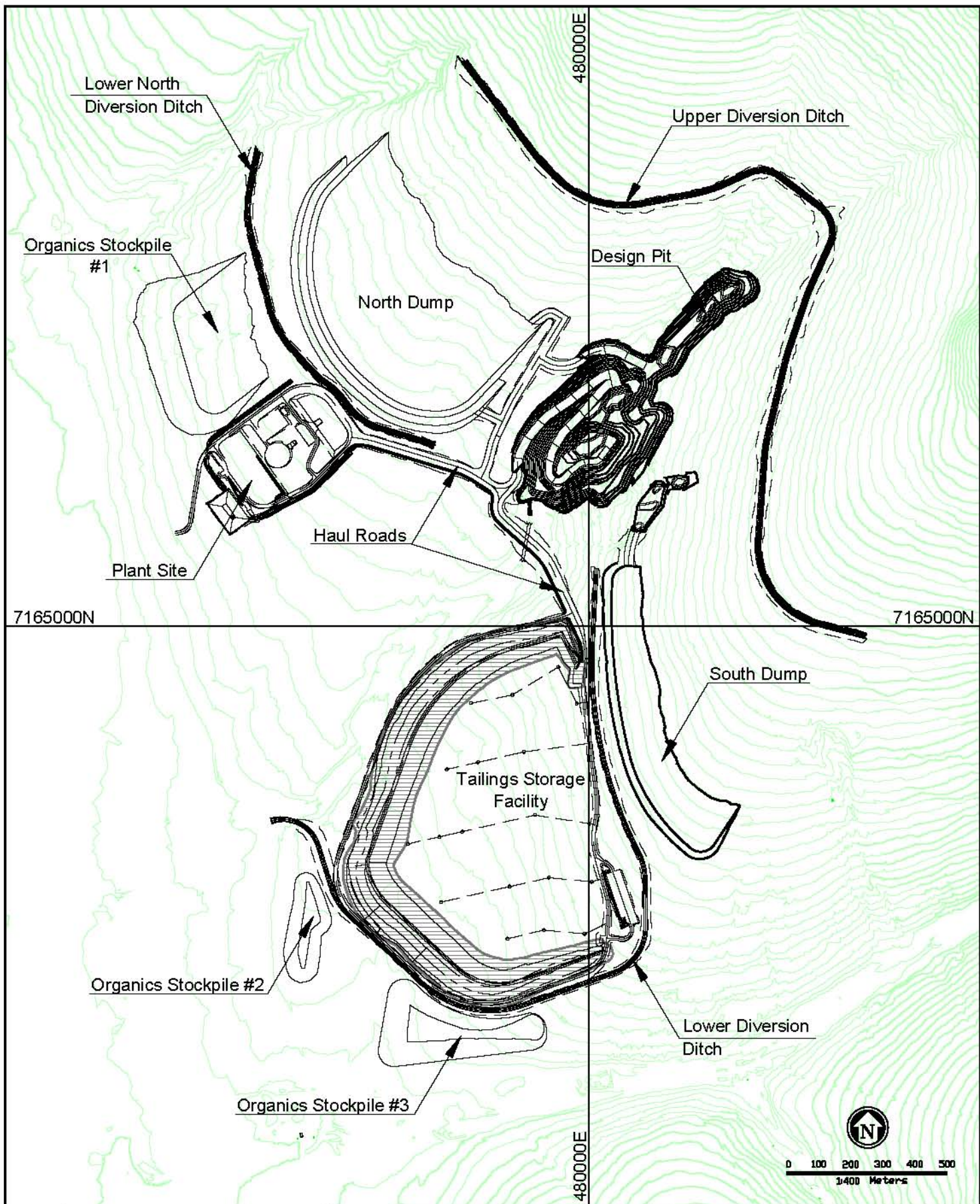
Sheet No.

1

Figure No.:

1

3276 Wine Road, Suite 240
Tomball, TX 77375
713.244.9999



Notes:

1. The Map Projection is in UTM NAD83 (Meters)
2. Source: Alaska Gold Company

Prepared For:



Ultimate Facilities at the Rock Creek Site

Prepared By:



3275 W. Ins Road, Suite 240
Tucson, Arizona 85741
520-544-3888

Revision Date: 19 May 2008	Sheet No.:	Figure No.: 2
Scale: As shown		
Project Number: 175004		
Drawing Name:		



Prepared By: SRK Consulting Engineers and Geoscientists 3075 66th Road, Suite 240 Tucson, Arizona 85741 USA		Sheet No.	Figure No.:
Revision Date:	22 May 2008		
Scale:	As shown		
Project Number:	175004		
Drawing Name:	175004_03_01_Ultimate_Facilities_at_Big_Hurrah.dwg		3

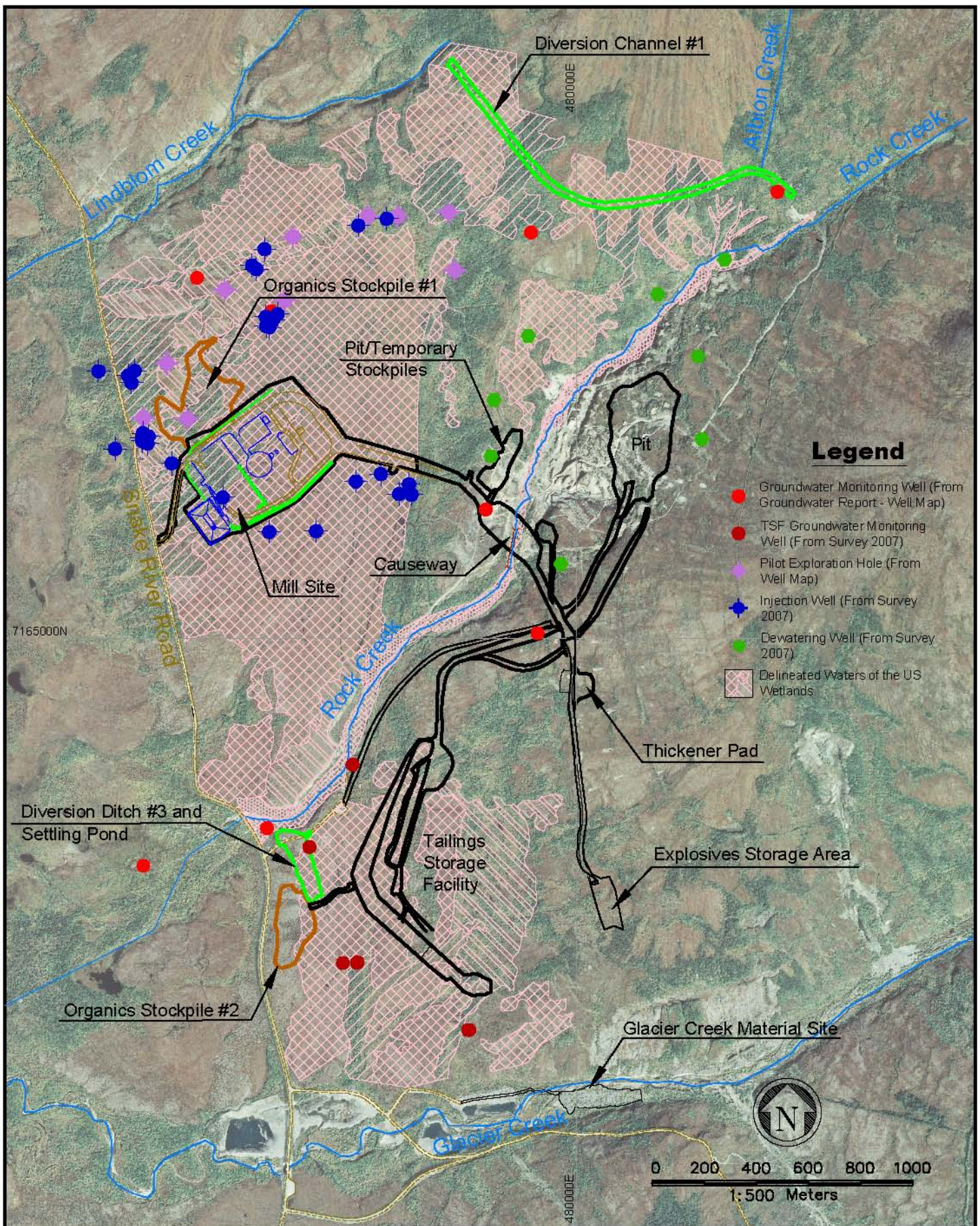
Prepared For: **Alaska Gold Company**
A subsidiary of NewGold Resources Inc.

Ultimate Facilities at the Big Hurrah Site

0 300 600 900 1200 1500 Feet

1" = 600'

Source: Alaska Gold Company



Notes:

1. The Map Projection is in UTM NAD83 (Meters)
2. Facilities are Current as of December
3. Source : Alaska Gold Company

Prepared For:



Current Facilities at the Rock Creek Site

Prepared By:



Revision Date: **19 May 2008**

Sheet No.

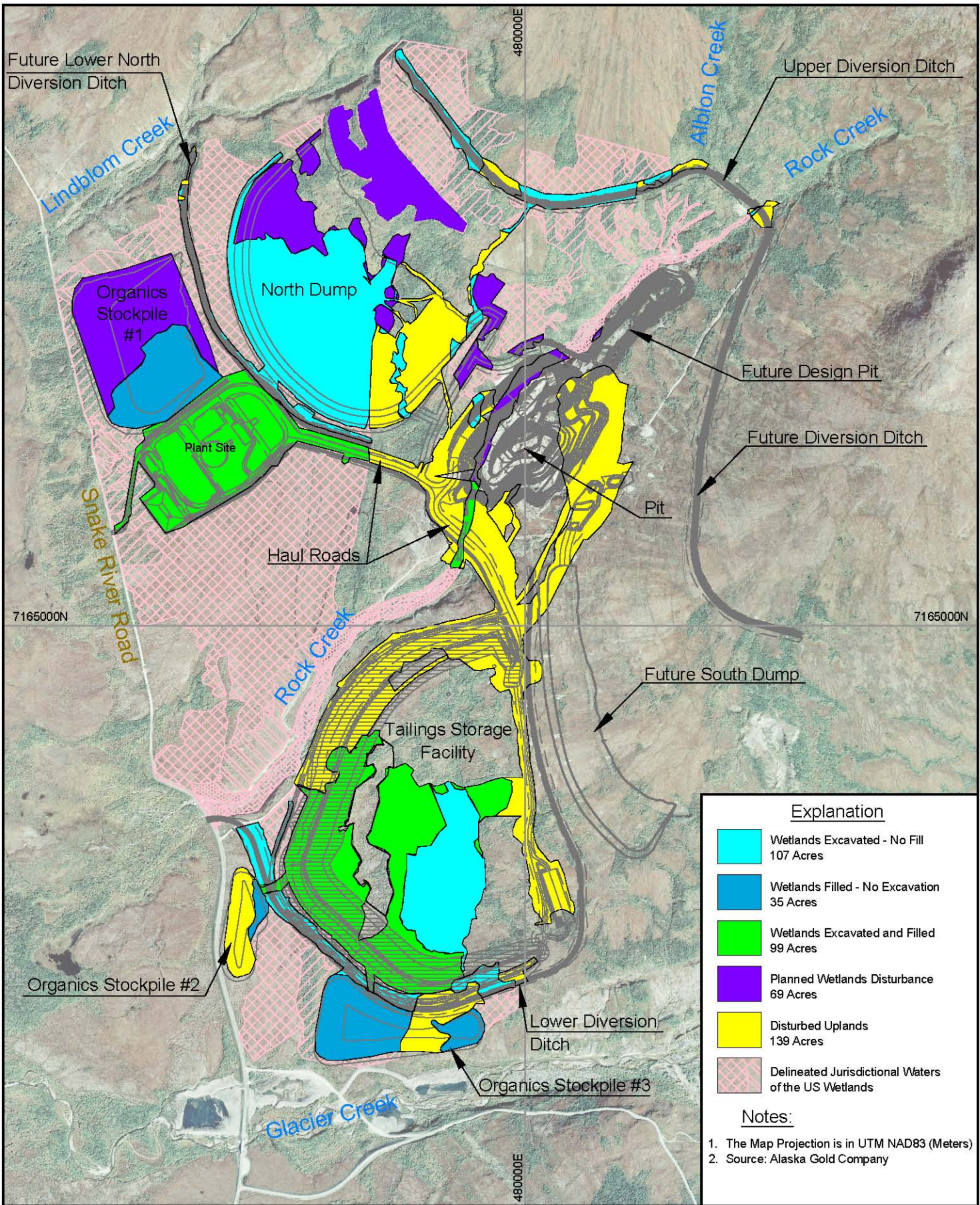
Figure No.:





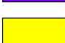

Scale: **As shown**

Project Number: **175004**

Drawing Name:


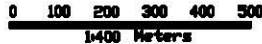
4



Explanation	
	Wetlands Excavated - No Fill 107 Acres
	Wetlands Filled - No Excavation 35 Acres
	Wetlands Excavated and Filled 99 Acres
	Planned Wetlands Disturbance 69 Acres
	Disturbed Uplands 139 Acres
	Delineated Jurisdictional Waters of the US Wetlands

Notes:

1. The Map Projection is in UTM NAD83 (Meters)
2. Source: Alaska Gold Company



 1:400 Meters

Prepared For:

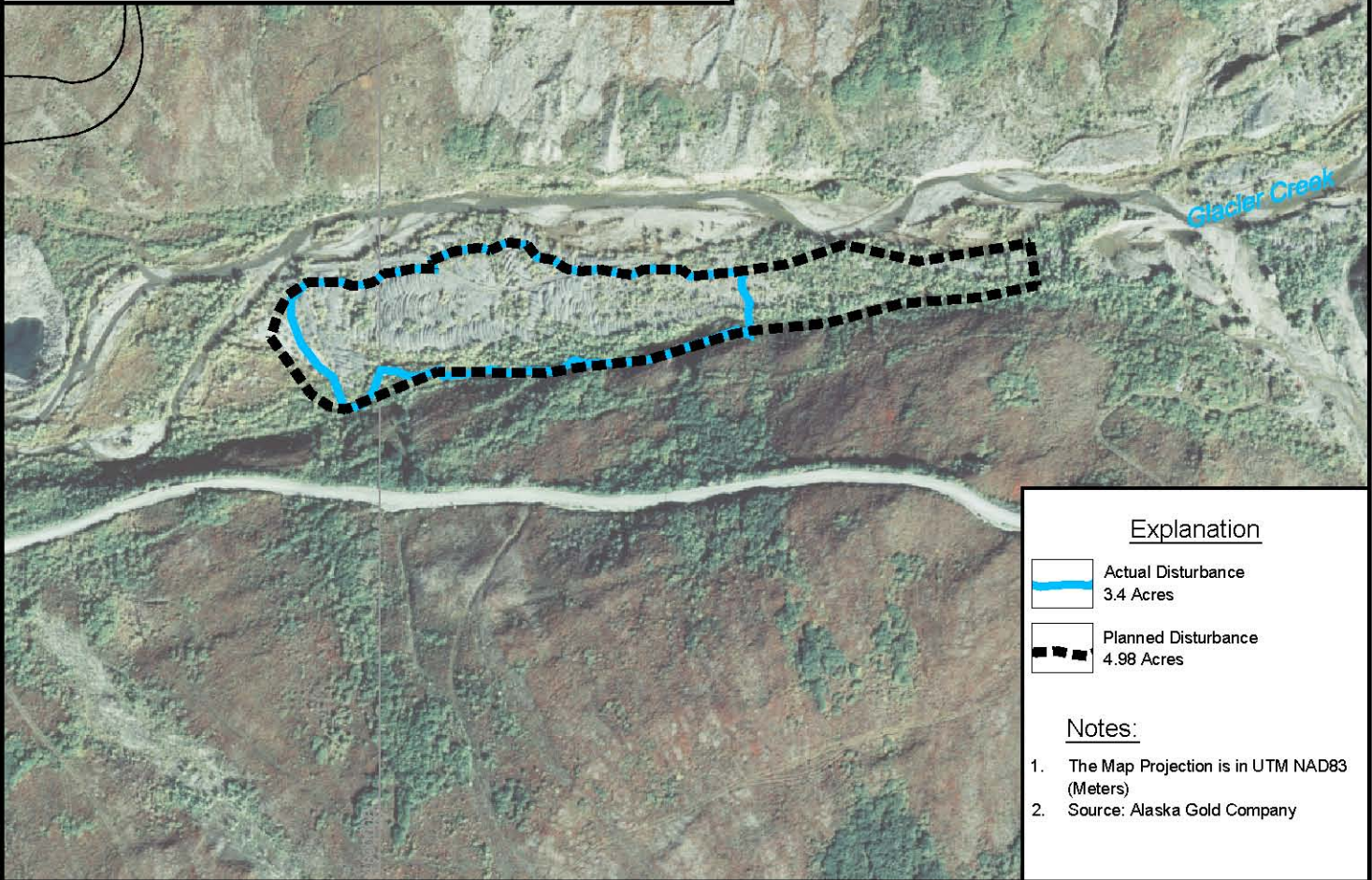
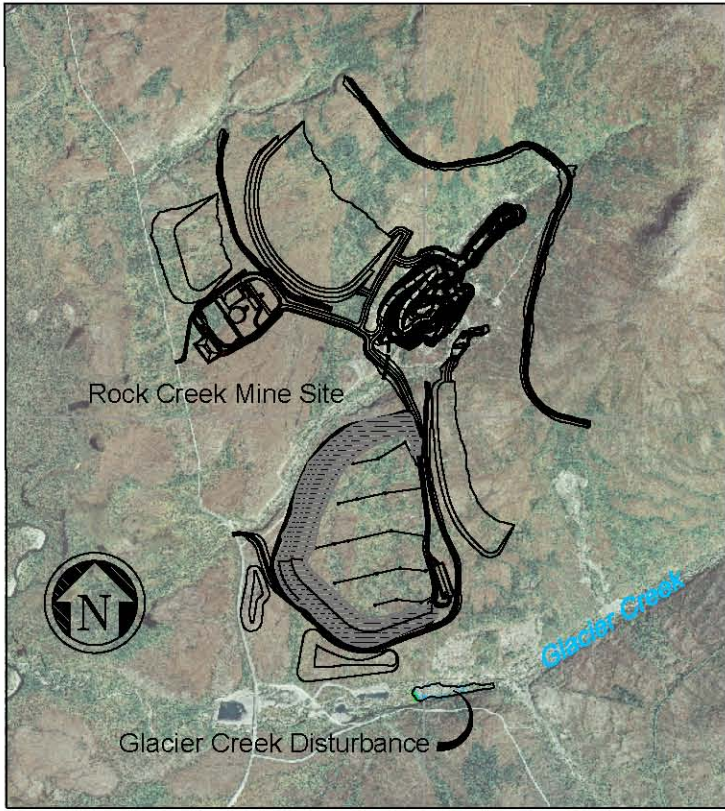
Alaska Gold Company
 A subsidiary of NovaGold Resources Inc.

Areas of Disturbance at the Rock
 Creek Site


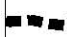
Prepared By:

SRK Consulting
 Engineers and Scientists
3276 W Ina Road, Suite 240
Tucson, Arizona 85741
520-844-3688

Revision Date: 19 May 2008	Sheet No.	5
Scale: As shown		
Project Number: 175004		
Drawing Name:		

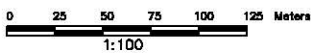


Explanation

-  Actual Disturbance
3.4 Acres
-  Planned Disturbance
4.98 Acres

Notes:

1. The Map Projection is in UTM NAD83 (Meters)
2. Source: Alaska Gold Company



Prepared For:



Prepared By:



3276 W Ina Road, Suite 240
Tucson, Arizona 85741
520-844-3688

Revision Date:

19 May 2008

Sheet No.

Scale: As shown

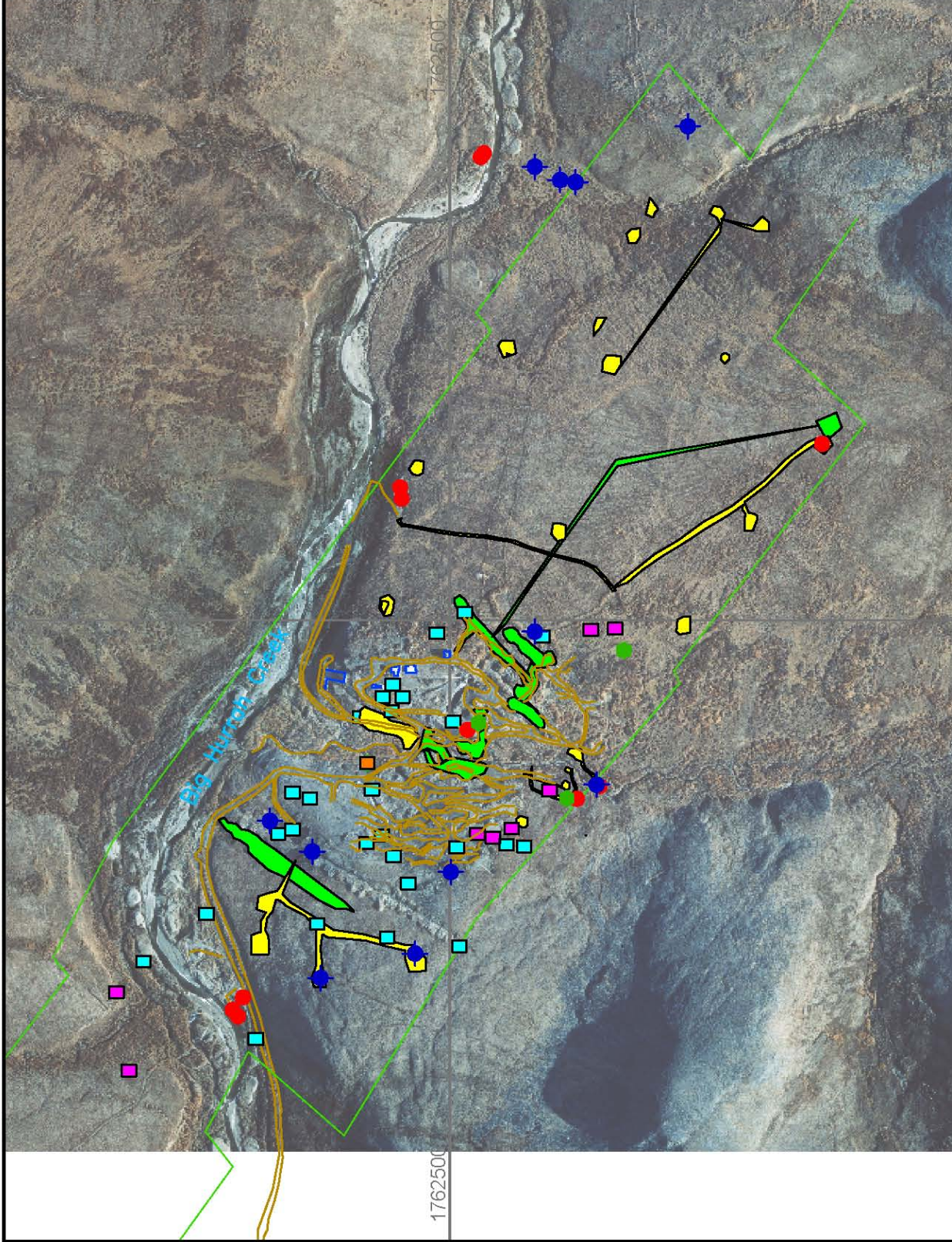
Project Number: 175004

Drawing Name:

Figure No.:

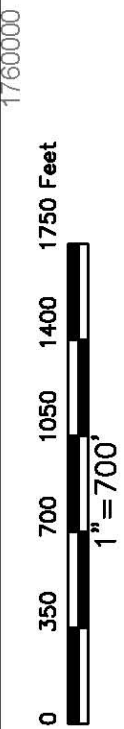
6

Glacier Creek Disturbance



Legend

- 2004 Disturbance
4.32 Acres
- 2005 Disturbance
4.74 Acres
- 2006 Reclaimed Pads
4.59 Acres
- 2006 Disturbance
4.87 Acres
- 2007 Disturbance
0.005 Acres
- Existing Roads
- B
D Existing Buildings
- Approx. Property Line
- Monitoring Well
- + Test Wells
- + Pumping Wells

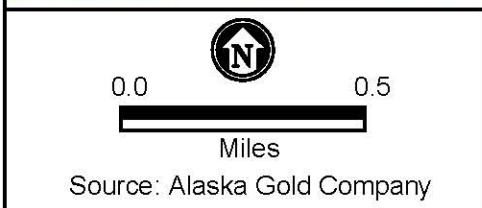
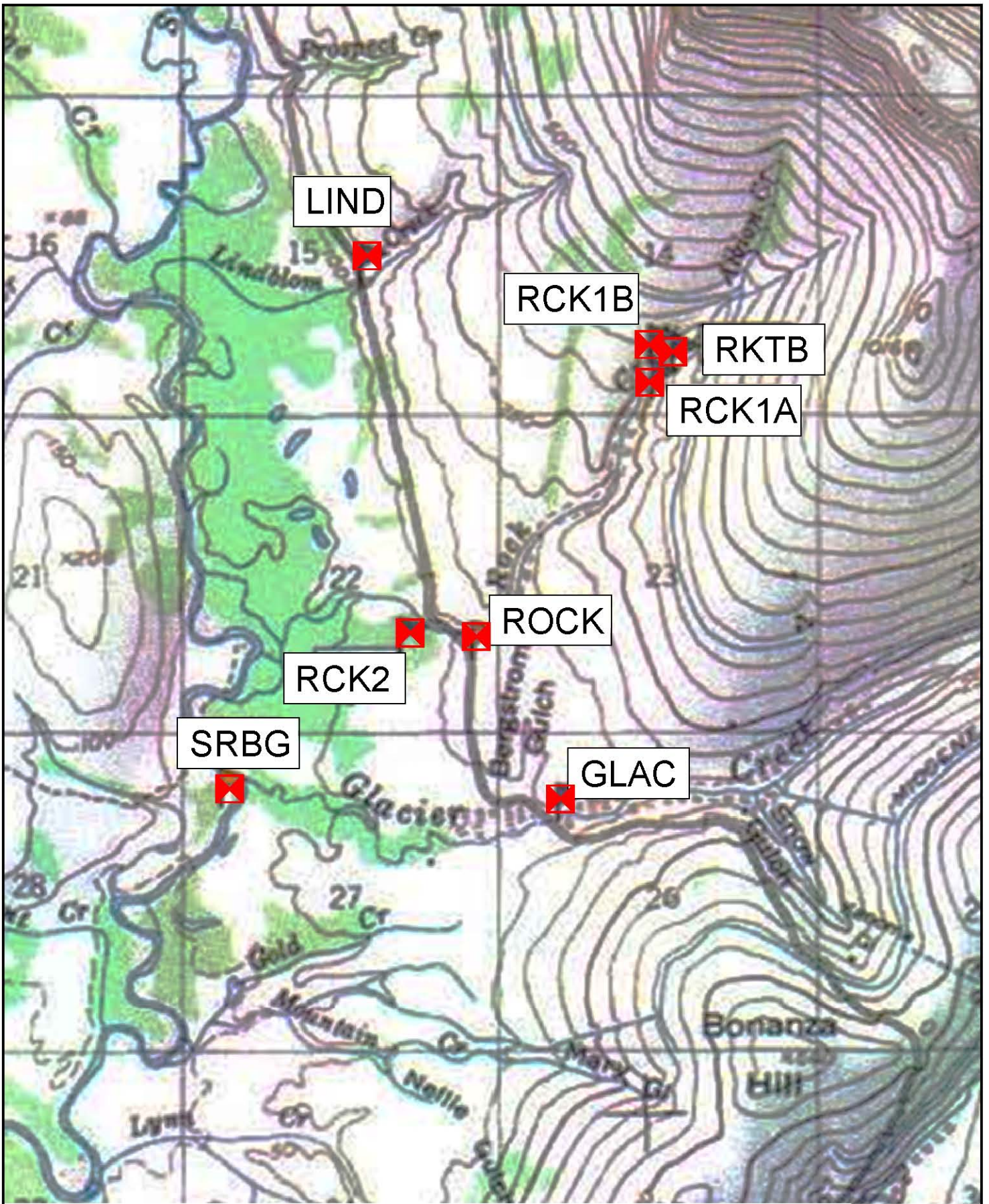



Source: Alaska Gold Company


Prepared For: **Alaska Gold Company**
A subsidiary of NewGold Resources Inc.

Current Facilities and Disturbance at the Big Hurrah Site

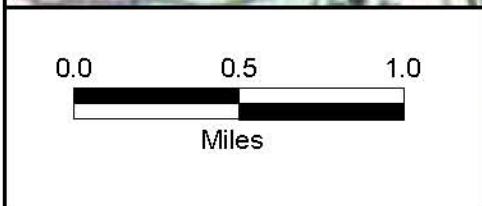
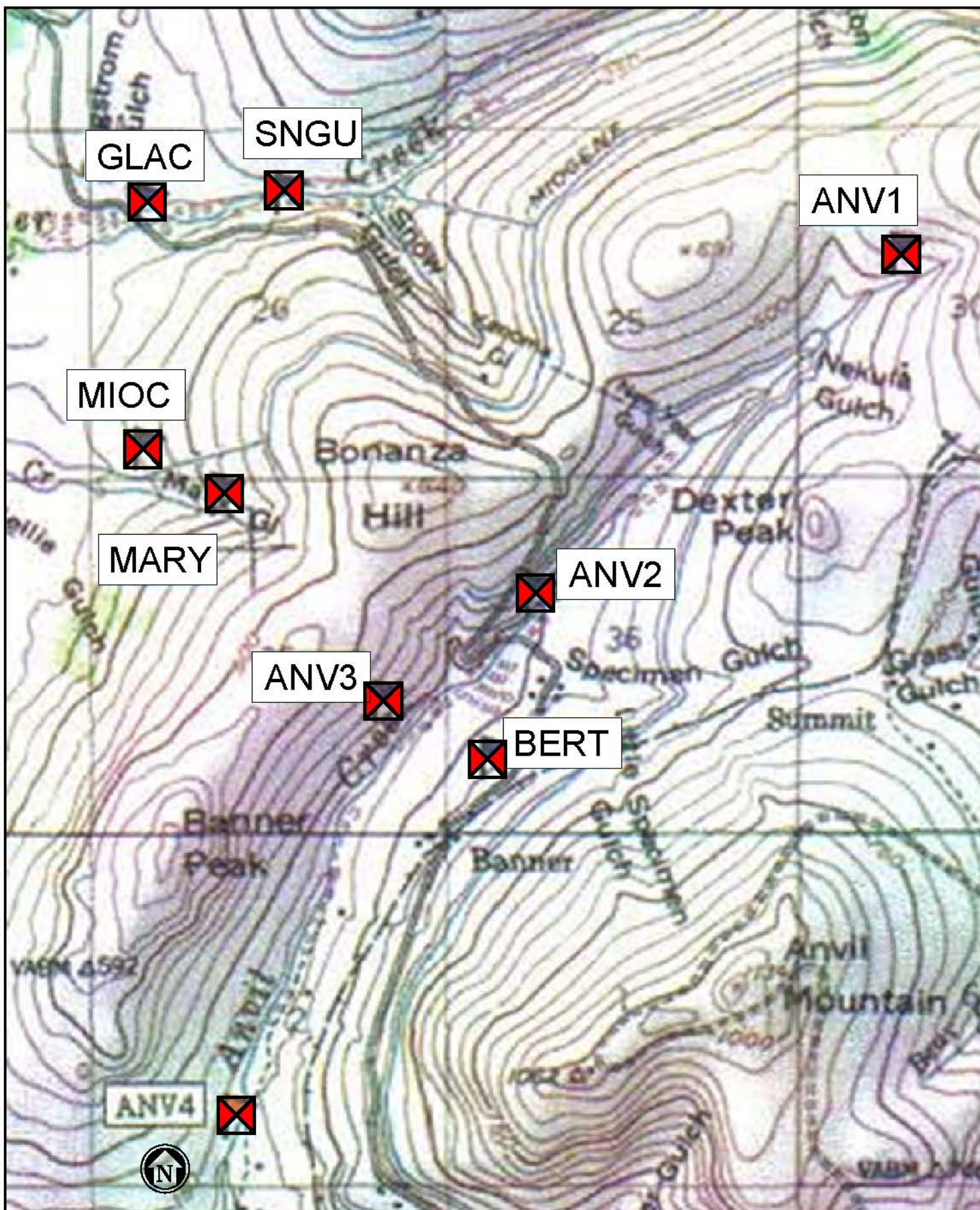
Prepared By: SRK Consulting <i>Engineers and Geologists</i> 3276 Wilco Road, Suite 240 Tucson, Arizona 85741	Revision Date: 22 May 2008	Sheet No.	Figure No:
	Scale: As shown		7
	Project Number: 175004		
	Drawing Name: 175004_Engr_ConFac_Dist_Disturbance.mxd		



Prepared For:
 **Alaska Gold Company**
 A subsidiary of NovaGold Resources Inc.
 Surface Water Sampling Locations -
 North of Glacier Creek

Prepared By:  **SRK Consulting**
 Engineers and Scientists
 3276 W Ina Road, Suite 240
 Tucson, Arizona 85741
 520-844-3688

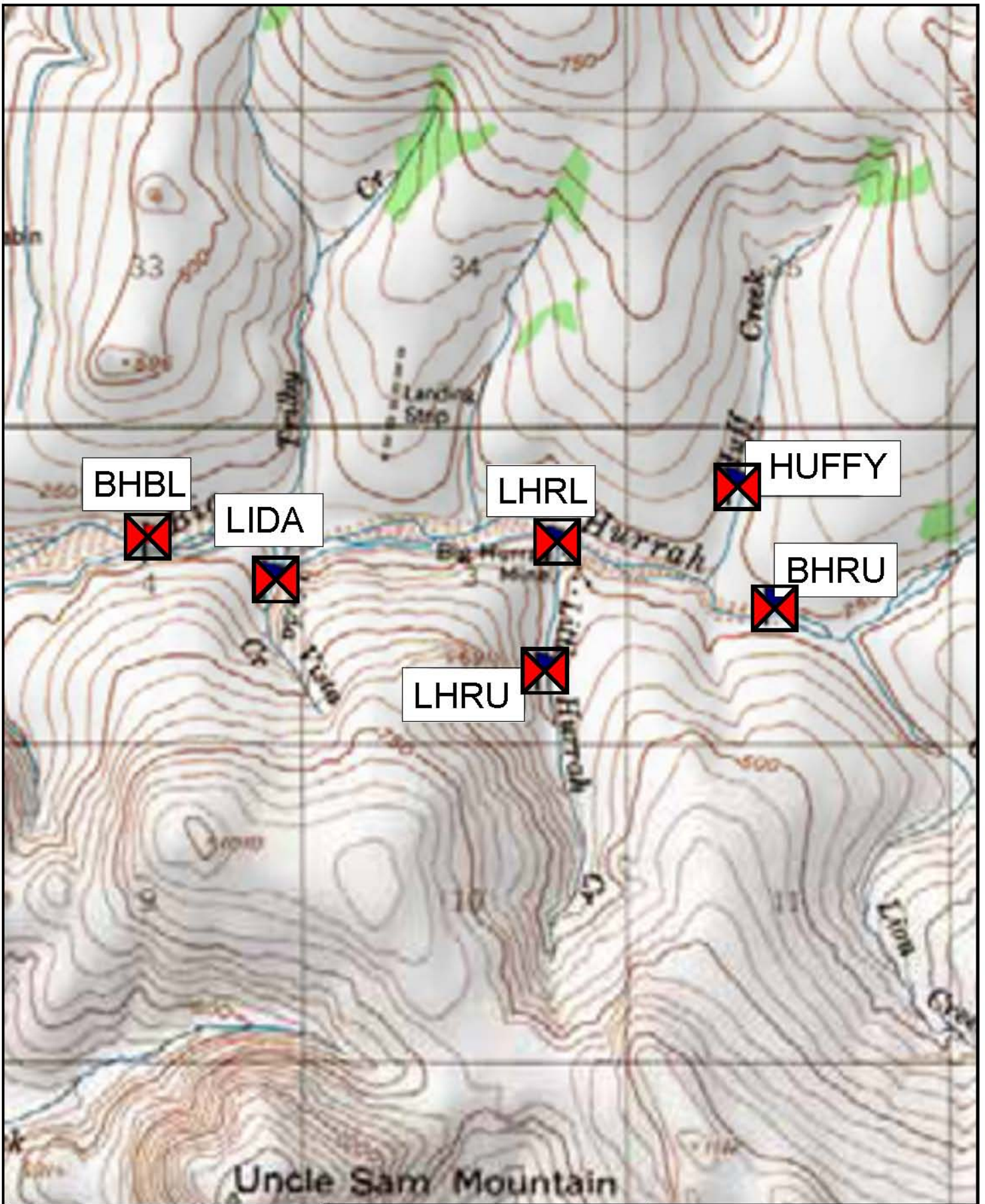
Revision Date: 22 May 2008	Sheet No.	Figure No.: 8
Scale: Not to Scale		
Project Number: 175004		
Drawing Name:		



Prepared For:
 **Alaska Gold Company**
 A subsidiary of NovaGold Resources Inc.
 Surface Water Sampling Locations -
 South of Glacier Creek

Prepared By:  **SRK Consulting**
 Engineers and Scientists
 3276 W. Iro Road, Suite 240
 Tucson, Arizona 85741
 520-844-3888

Revision Date: 22 May 2008	Sheet No.	Figure No.: 9
Scale: As shown		
Project Number: 175004		
Drawing Name:		



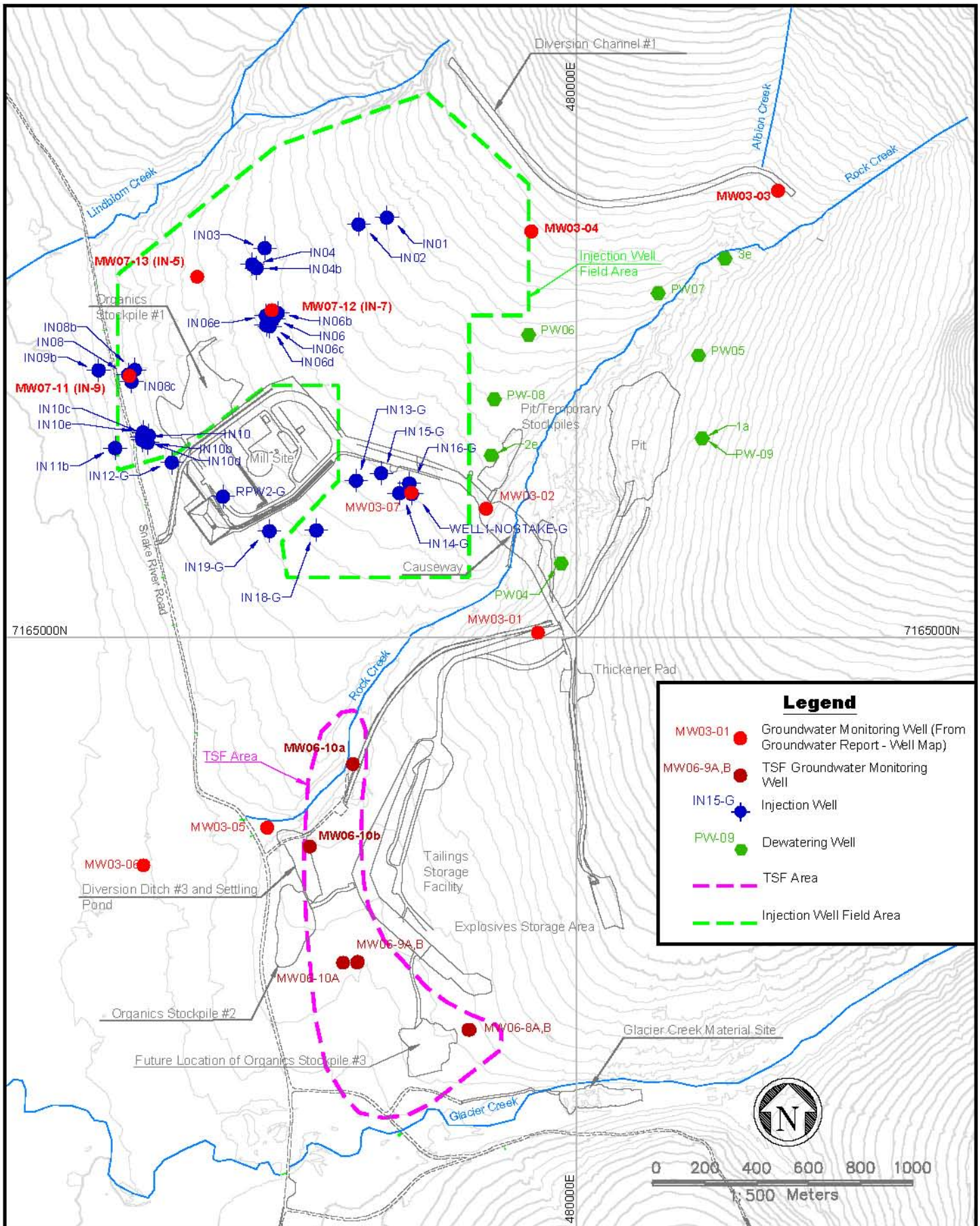
Prepared For:
 **Alaska Gold Company**
 A subsidiary of NovaGold Resources Inc.

Prepared By:  **SRK Consulting**
 Engineers and Scientists
 3275 W. Iro Road, Suite 240
 Tucson, Arizona 85741
 520-544-3888

Surface Water Sampling Locations at
 the Big Hurrah Site

Revision Date: 22 May 2008	Sheet No.
Scale: Not to Scale	Figure No.:
Project Number: 175004	
Drawing Name:	

Figure No.:
10



Notes:

1. The Map Projection is in UTM NAD83 (Meters)
2. Facilities Shown are as of Year End 2007
3. Source: Alaska Gold Company

Prepared For:



Groundwater Monitoring Locations at the Rock Creek Site

Prepared By:



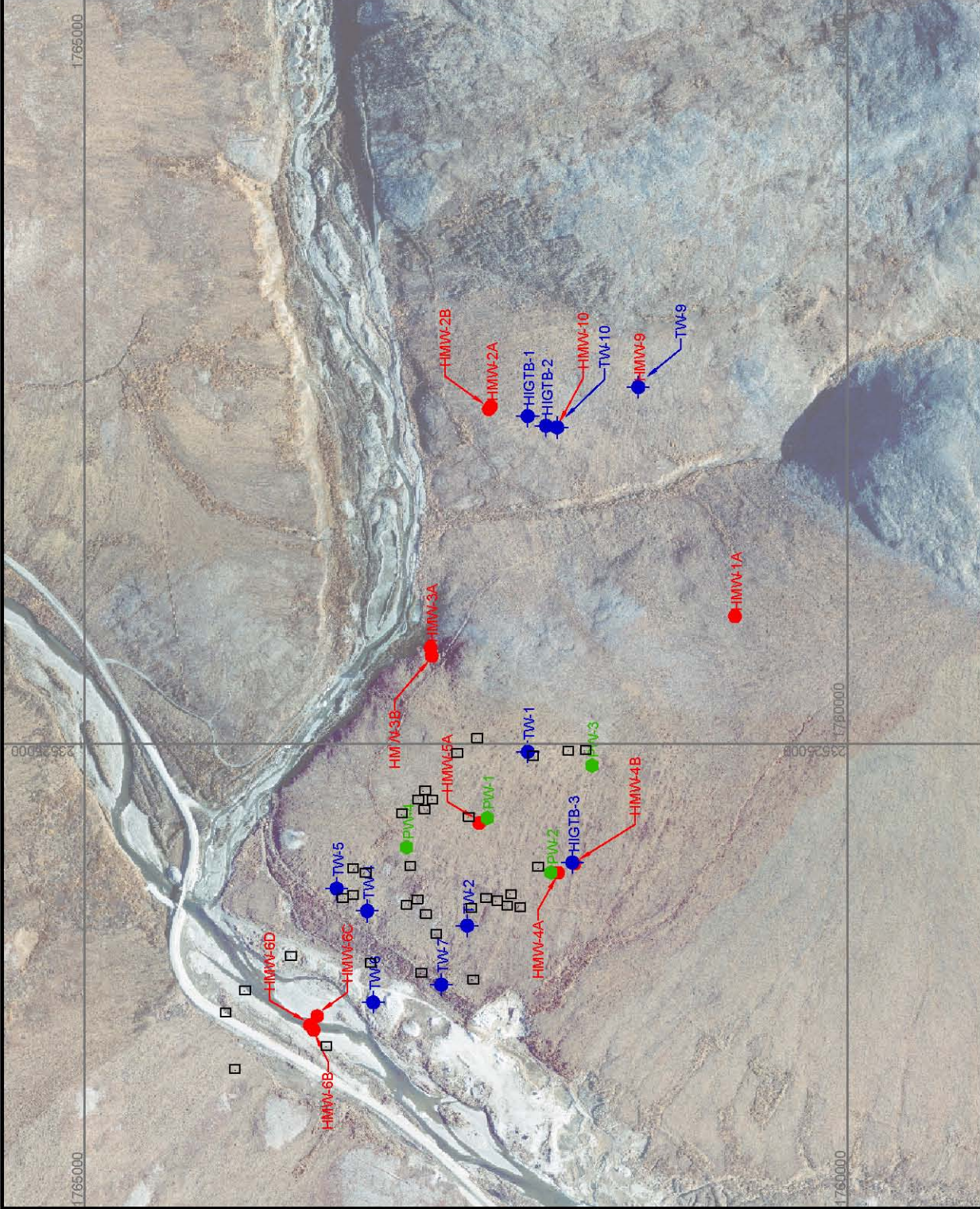
Revision Date: **21 May 2008**

Sheet No.

Figure No.:

Scale: **As Shown**
 Project Number: **175004**
 Drawing Name:

11



Legend

- Monitoring Well
- Test Wells
- Pumping Wells
- 2006 Collar Survey

Notes

1. The Map Projection is in UTM NAD83 feet
2. Source: Alaska Gold Company



Prepared For: **Alaska Gold Company**
 A subsidiary of Newfoundland Resources Inc.

Prepared By: **SAK Consulting**
 Engineers and Scientists
 3276 Wilton Road, Suite 240
 Fairbanks, Alaska 99701
 Phone: 907.452.8871

Groundwater Monitoring Locations at
 the Big Hurrah Site

Revision Date:	21 May 2008	Sheet No.		Figure No.:	12
Scale:	Not to Scale				
Project Number:	175004				
Drawing Name:	175004_Fig-12_MW_Loc_BH_16-200814.r10.dwg				

