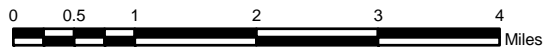


~State of Alaska~
Chisana River
Recordable Disclaimer of Interest Application
(Map 1 of 4)



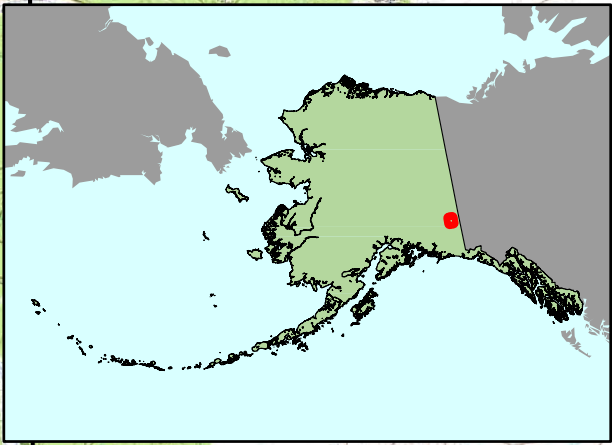
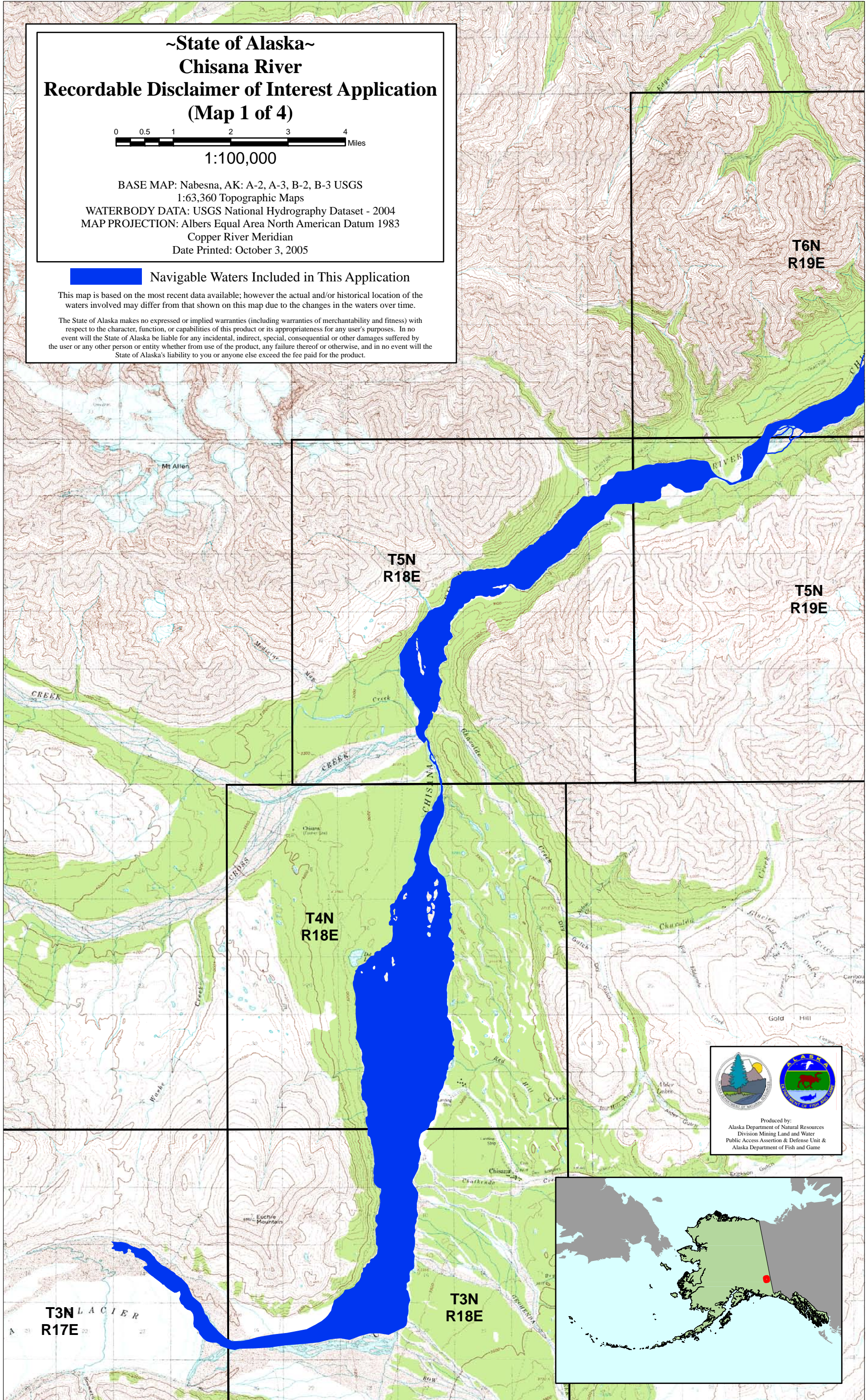
1:100,000

BASE MAP: Nabesna, AK: A-2, A-3, B-2, B-3 USGS
 1:63,360 Topographic Maps
 WATERBODY DATA: USGS National Hydrography Dataset - 2004
 MAP PROJECTION: Albers Equal Area North American Datum 1983
 Copper River Meridian
 Date Printed: October 3, 2005

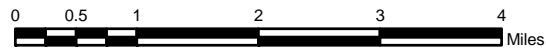
Navigable Waters Included in This Application

This map is based on the most recent data available; however the actual and/or historical location of the waters involved may differ from that shown on this map due to the changes in the waters over time.

The State of Alaska makes no expressed or implied warranties (including warranties of merchantability and fitness) with respect to the character, function, or capabilities of this product or its appropriateness for any user's purposes. In no event will the State of Alaska be liable for any incidental, indirect, special, consequential or other damages suffered by the user or any other person or entity whether from use of the product, any failure thereof or otherwise, and in no event will the State of Alaska's liability to you or anyone else exceed the fee paid for the product.




~State of Alaska~
Chisana River
Recordable Disclaimer of Interest Application
(Map 2 of 4)



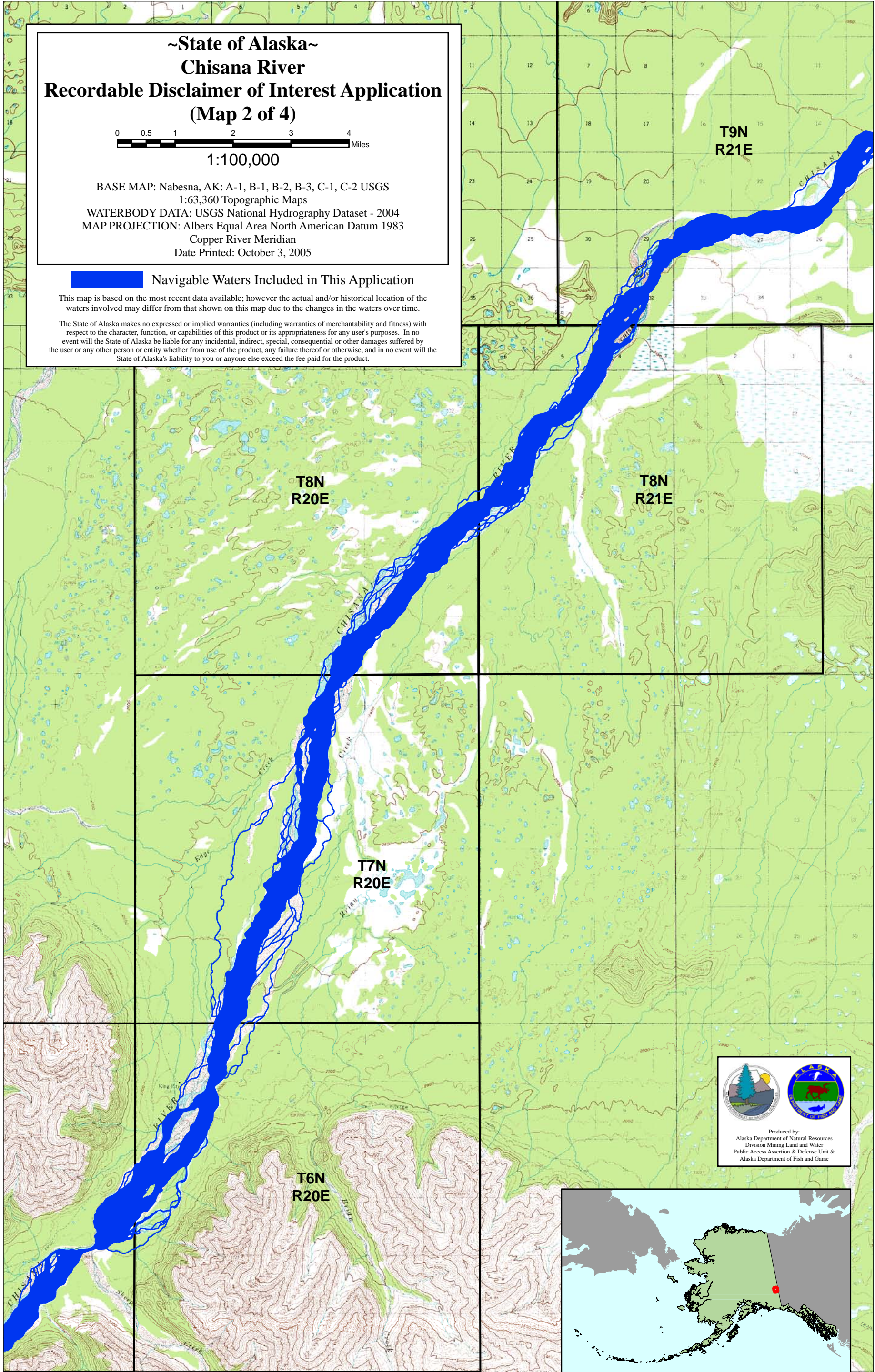
1:100,000

BASE MAP: Nabesna, AK: A-1, B-1, B-2, B-3, C-1, C-2 USGS
 1:63,360 Topographic Maps
 WATERBODY DATA: USGS National Hydrography Dataset - 2004
 MAP PROJECTION: Albers Equal Area North American Datum 1983
 Copper River Meridian
 Date Printed: October 3, 2005

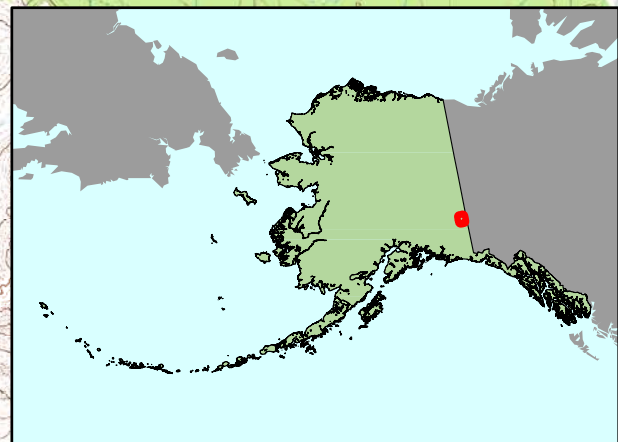
 **Navigable Waters Included in This Application**

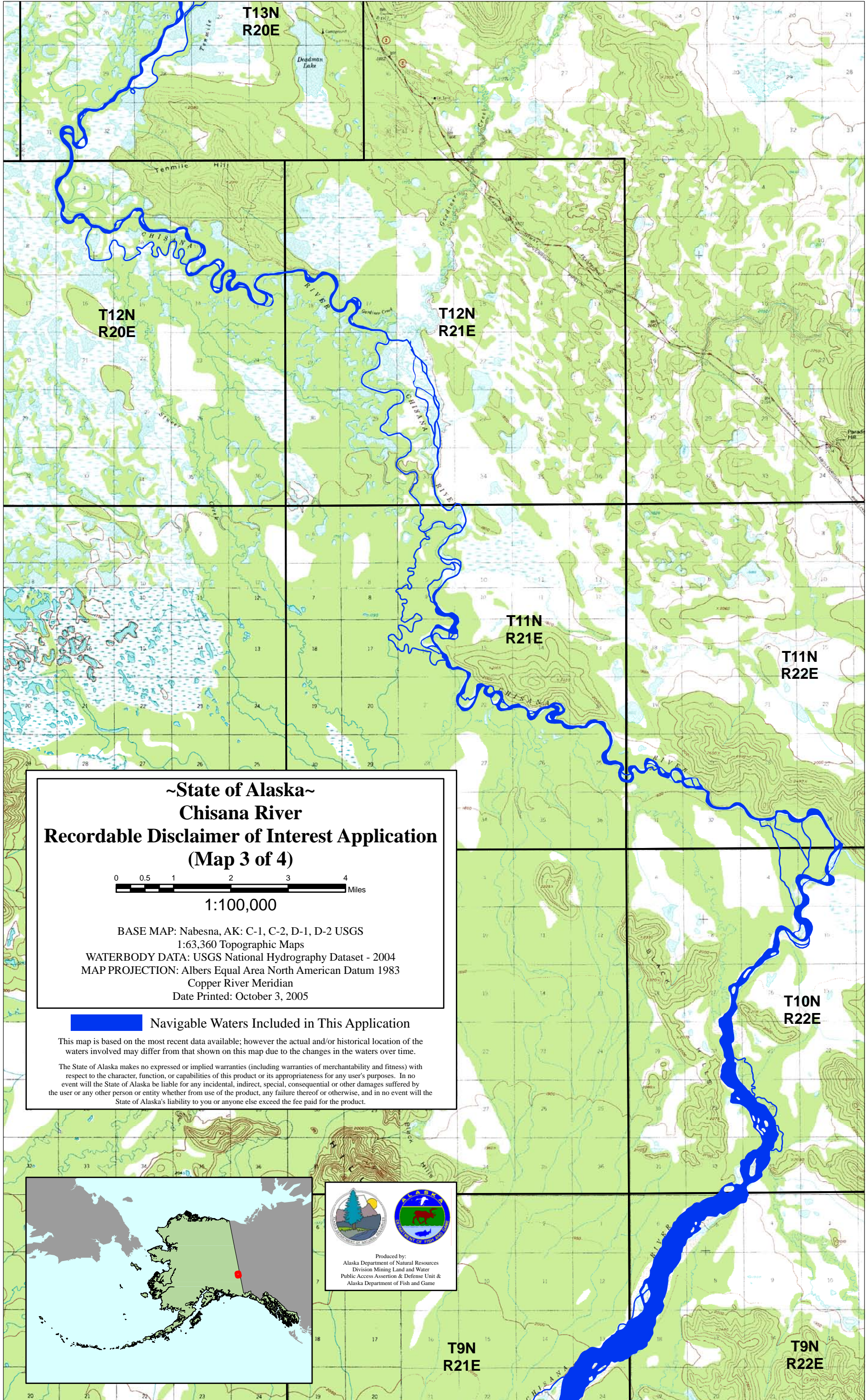
This map is based on the most recent data available; however the actual and/or historical location of the waters involved may differ from that shown on this map due to the changes in the waters over time.

The State of Alaska makes no expressed or implied warranties (including warranties of merchantability and fitness) with respect to the character, function, or capabilities of this product or its appropriateness for any user's purposes. In no event will the State of Alaska be liable for any incidental, indirect, special, consequential or other damages suffered by the user or any other person or entity whether from use of the product, any failure thereof or otherwise, and in no event will the State of Alaska's liability to you or anyone else exceed the fee paid for the product.

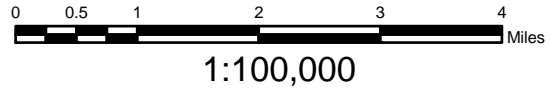


Produced by:
 Alaska Department of Natural Resources
 Division Mining Land and Water
 Public Access Assertion & Defense Unit &
 Alaska Department of Fish and Game






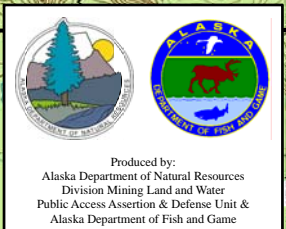
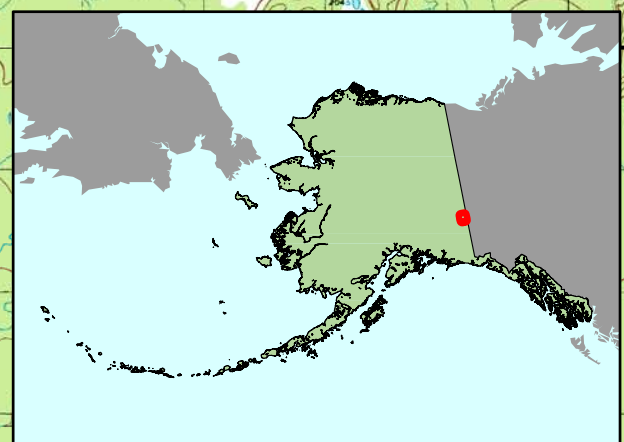
~State of Alaska~
Chisana River
Recordable Disclaimer of Interest Application
(Map 3 of 4)



BASE MAP: Nabesna, AK: C-1, C-2, D-1, D-2 USGS
 1:63,360 Topographic Maps
 WATERBODY DATA: USGS National Hydrography Dataset - 2004
 MAP PROJECTION: Albers Equal Area North American Datum 1983
 Copper River Meridian
 Date Printed: October 3, 2005

 **Navigable Waters Included in This Application**

This map is based on the most recent data available; however the actual and/or historical location of the waters involved may differ from that shown on this map due to the changes in the waters over time.
 The State of Alaska makes no expressed or implied warranties (including warranties of merchantability and fitness) with respect to the character, function, or capabilities of this product or its appropriateness for any user's purposes. In no event will the State of Alaska be liable for any incidental, indirect, special, consequential or other damages suffered by the user or any other person or entity whether from use of the product, any failure thereof or otherwise, and in no event will the State of Alaska's liability to you or anyone else exceed the fee paid for the product.



**T9N
R21E**

**T9N
R22E**

**T12N
R20E**

**T12N
R21E**

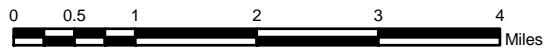
**T11N
R21E**

**T11N
R22E**

**T10N
R22E**

**T13N
R20E**

~State of Alaska~
Chisana River
Recordable Disclaimer of Interest Application
(Map 4 of 4)



1:100,000

BASE MAP: Nabesna, AK: D-1, D-2, D-3 & Tanacross, AK: A-1, A-2, A-3

USGS 1:63,360 Topographic Maps

WATERBODY DATA: USGS National Hydrography Dataset - 2004

MAP PROJECTION: Albers Equal Area North American Datum 1983

Copper River Meridian

Date Printed: October 3, 2005

Navigable Waters Included in This Application

This map is based on the most recent data available; however the actual and/or historical location of the waters involved may differ from that shown on this map due to the changes in the waters over time.

The State of Alaska makes no expressed or implied warranties (including warranties of merchantability and fitness) with respect to the character, function, or capabilities of this product or its appropriateness for any user's purposes. In no event will the State of Alaska be liable for any incidental, indirect, special, consequential or other damages suffered by the user or any other person or entity whether from use of the product, any failure thereof or otherwise, and in no event will the State of Alaska's liability to you or anyone else exceed the fee paid for the product.

