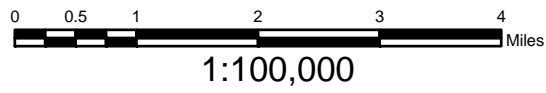



~State of Alaska~
Kantishna River (Including Birch Creek Segment)
Recordable Disclaimer of Interest Application
(Map 1 of 4)

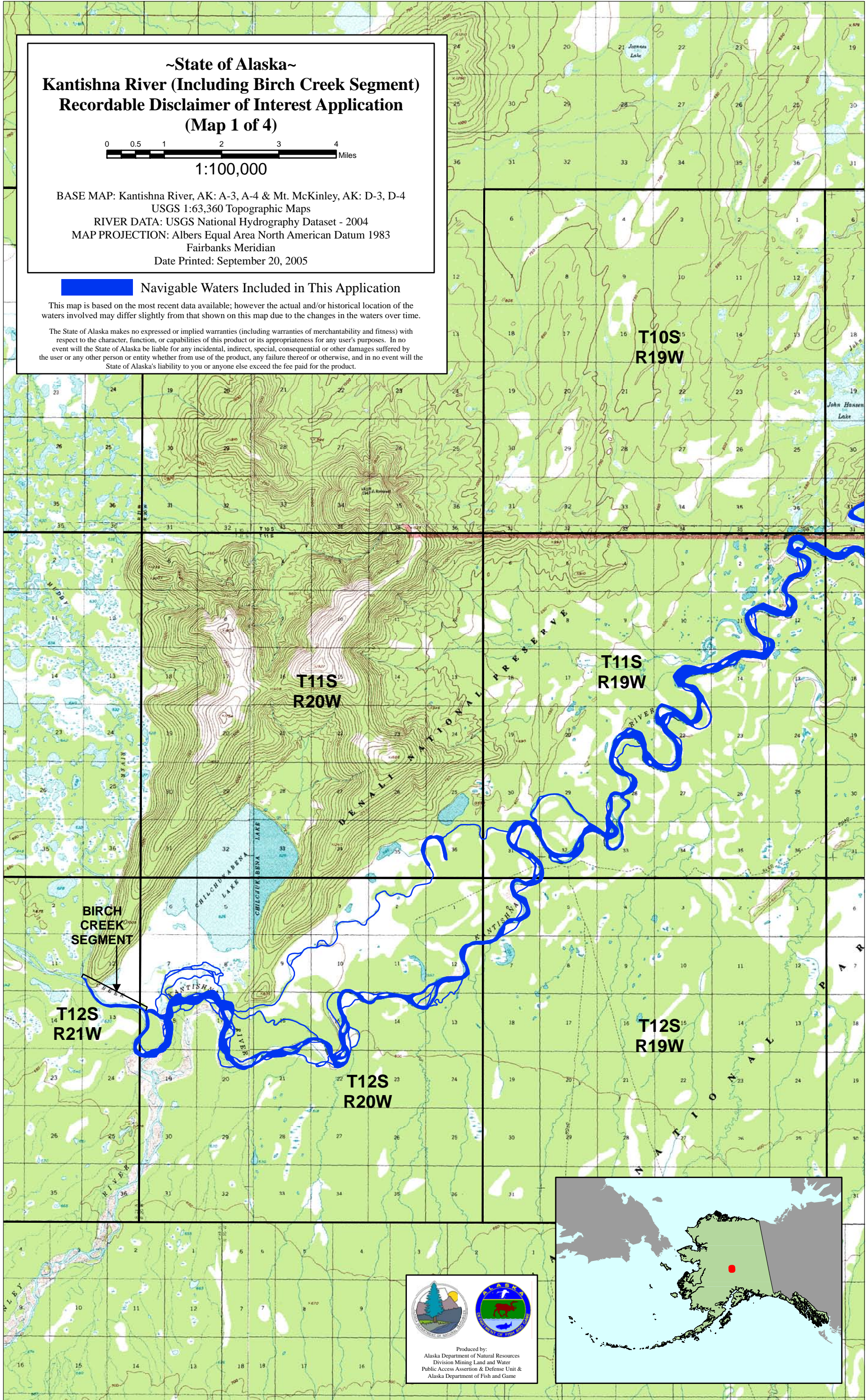


BASE MAP: Kantishna River, AK: A-3, A-4 & Mt. McKinley, AK: D-3, D-4
USGS 1:63,360 Topographic Maps
RIVER DATA: USGS National Hydrography Dataset - 2004
MAP PROJECTION: Albers Equal Area North American Datum 1983
Fairbanks Meridian
Date Printed: September 20, 2005

 **Navigable Waters Included in This Application**

This map is based on the most recent data available; however the actual and/or historical location of the waters involved may differ slightly from that shown on this map due to the changes in the waters over time.

The State of Alaska makes no expressed or implied warranties (including warranties of merchantability and fitness) with respect to the character, function, or capabilities of this product or its appropriateness for any user's purposes. In no event will the State of Alaska be liable for any incidental, indirect, special, consequential or other damages suffered by the user or any other person or entity whether from use of the product, any failure thereof or otherwise, and in no event will the State of Alaska's liability to you or anyone else exceed the fee paid for the product.



BIRCH CREEK SEGMENT


**T11S
R20W**

**T11S
R19W**

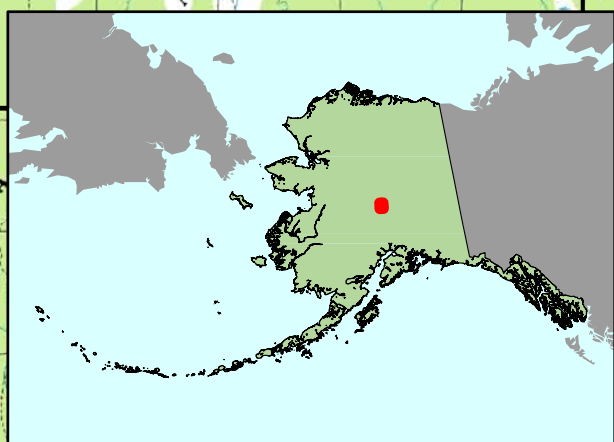
**T12S
R21W**

**T12S
R20W**

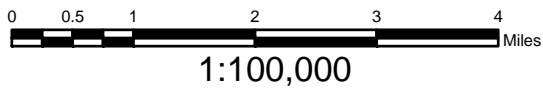
**T12S
R19W**



Produced by:
Alaska Department of Natural Resources
Division Mining, Land and Water
Public Access Assertion & Defense Unit &
Alaska Department of Fish and Game



~State of Alaska~
Kantishna River (Including Birch Creek Segment)
Recordable Disclaimer of Interest Application
(Map 3 of 4)



BASE MAP: Kantishna River, AK: A-1, A-2, B-1, B-2 USGS
 1:63,360 Topographic Maps
 RIVER DATA: USGS National Hydrography Dataset - 2004
 MAP PROJECTION: Albers Equal Area North American Datum 1983
 Fairbanks Meridian
 Date Printed: September 20, 2005

Navigable Waters Included in This Application

This map is based on the most recent data available; however the actual and/or historical location of the waters involved may differ slightly from that shown on this map due to the changes in the waters over time.

The State of Alaska makes no expressed or implied warranties (including warranties of merchantability and fitness) with respect to the character, function, or capabilities of this product or its appropriateness for any user's purposes. In no event will the State of Alaska be liable for any incidental, indirect, special, consequential or other damages suffered by the user or any other person or entity whether from use of the product, any failure thereof or otherwise, and in no event will the State of Alaska's liability to you or anyone else exceed the fee paid for the product.

**T6S
R15W**

**T7S
R15W**

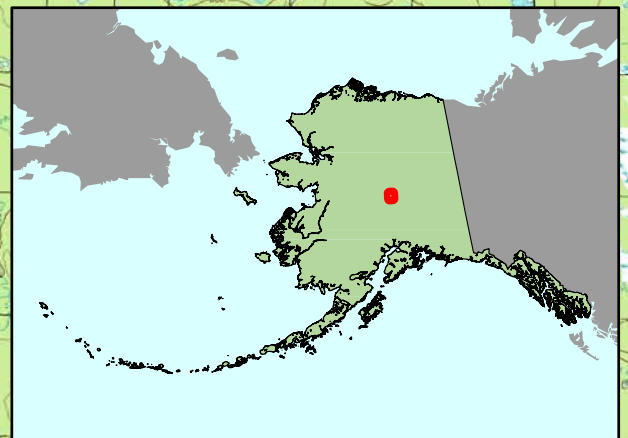
**T8S
R16W**

**T8S
R15W**

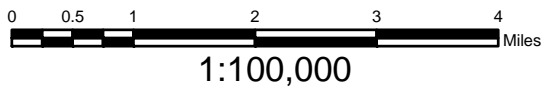
**T9S
R16W**




Produced by:
 Alaska Department of Natural Resources
 Division Mining Land and Water
 Public Access Assertion & Defense Unit &
 Alaska Department of Fish and Game



~State of Alaska~
Kantishna River (Including Birch Creek Segment)
Recordable Disclaimer of Interest Application
(Map 2 of 4)

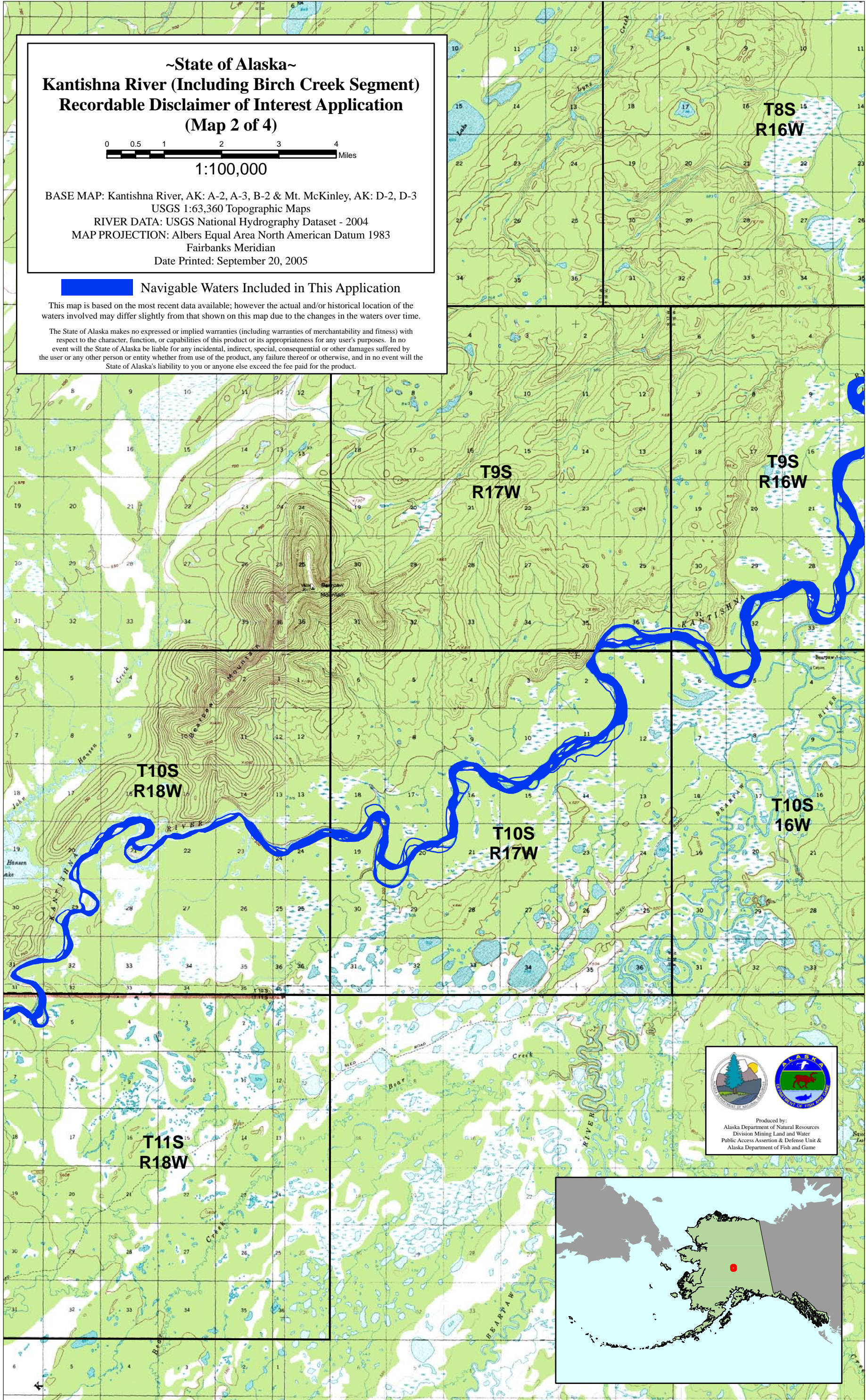


BASE MAP: Kantishna River, AK: A-2, A-3, B-2 & Mt. McKinley, AK: D-2, D-3
 USGS 1:63,360 Topographic Maps
 RIVER DATA: USGS National Hydrography Dataset - 2004
 MAP PROJECTION: Albers Equal Area North American Datum 1983
 Fairbanks Meridian
 Date Printed: September 20, 2005

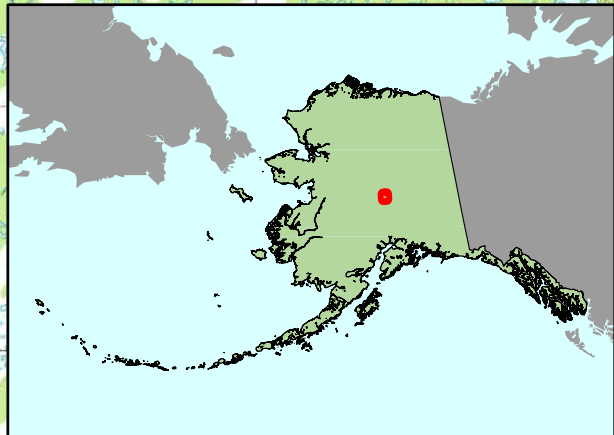
 **Navigable Waters Included in This Application**

This map is based on the most recent data available; however the actual and/or historical location of the waters involved may differ slightly from that shown on this map due to the changes in the waters over time.

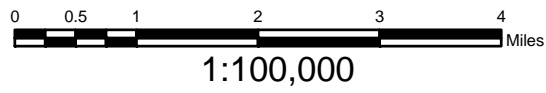
The State of Alaska makes no expressed or implied warranties (including warranties of merchantability and fitness) with respect to the character, function, or capabilities of this product or its appropriateness for any user's purposes. In no event will the State of Alaska be liable for any incidental, indirect, special, consequential or other damages suffered by the user or any other person or entity whether from use of the product, any failure thereof or otherwise, and in no event will the State of Alaska's liability to you or anyone else exceed the fee paid for the product.




Produced by:
 Alaska Department of Natural Resources
 Division Mining Land and Water
 Public Access Assertion & Defense Unit &
 Alaska Department of Fish and Game



~State of Alaska~
Kantishna River (Including Birch Creek Segment)
Recordable Disclaimer of Interest Application
(Map 4 of 4)

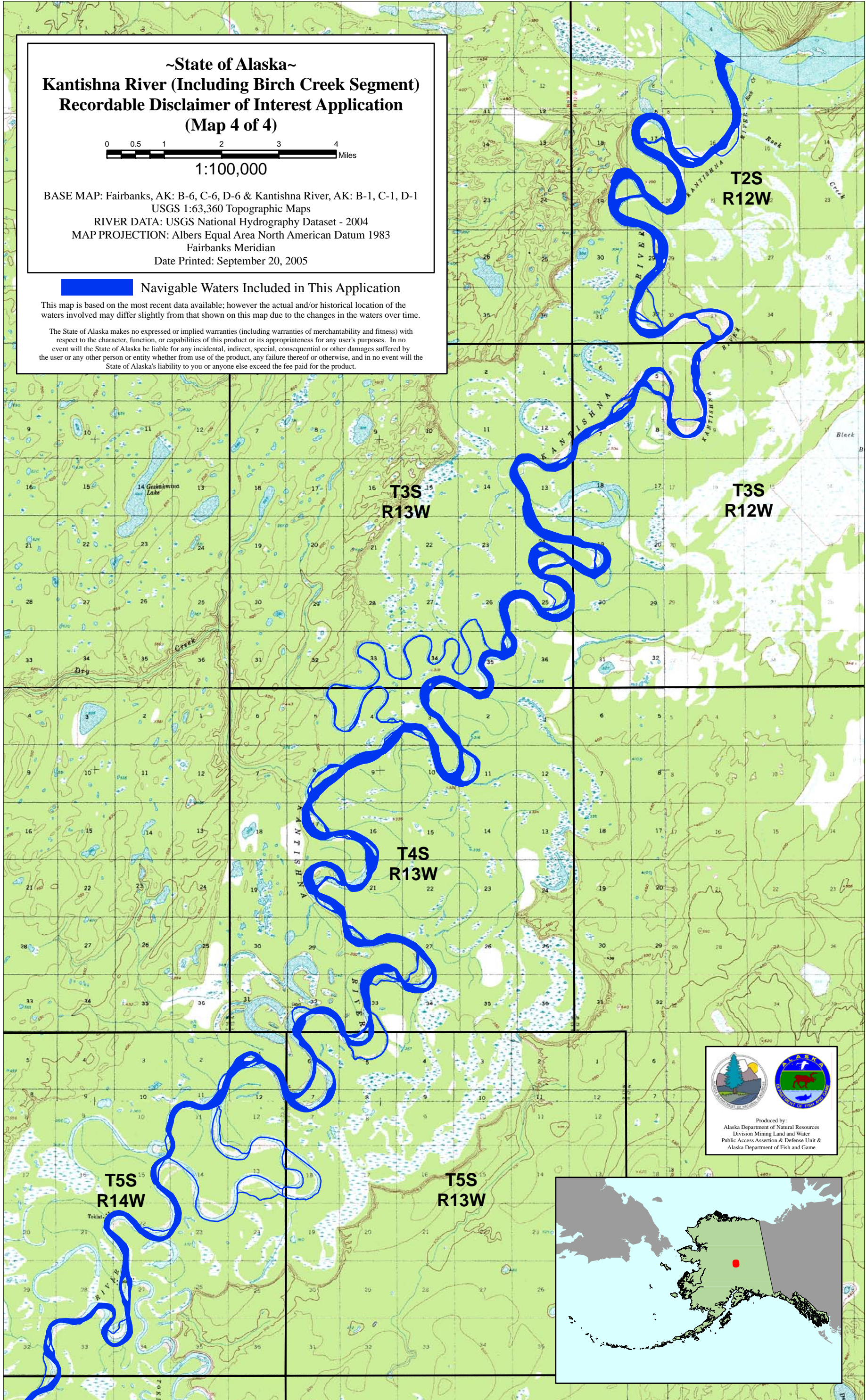


BASE MAP: Fairbanks, AK: B-6, C-6, D-6 & Kantishna River, AK: B-1, C-1, D-1
 USGS 1:63,360 Topographic Maps
 RIVER DATA: USGS National Hydrography Dataset - 2004
 MAP PROJECTION: Albers Equal Area North American Datum 1983
 Fairbanks Meridian
 Date Printed: September 20, 2005

Navigable Waters Included in This Application

This map is based on the most recent data available; however the actual and/or historical location of the waters involved may differ slightly from that shown on this map due to the changes in the waters over time.

The State of Alaska makes no expressed or implied warranties (including warranties of merchantability and fitness) with respect to the character, function, or capabilities of this product or its appropriateness for any user's purposes. In no event will the State of Alaska be liable for any incidental, indirect, special, consequential or other damages suffered by the user or any other person or entity whether from use of the product, any failure thereof or otherwise, and in no event will the State of Alaska's liability to you or anyone else exceed the fee paid for the product.



Produced by:
 Alaska Department of Natural Resources
 Division Mining Land and Water
 Public Access Assertion & Defense Unit &
 Alaska Department of Fish and Game

