

MANAGEMENT UNIT 19: Squirrel Creek - Mount DuRelle

Background

This unit is the large block of state-owned and state-selected land that lies between the Klutina River and the Richardson Highway. State selected lands are also selected by Ahtna, Inc. Much of the area is forested. Management subunits 19C and 19D have particularly good tree cover and have soils with potential for agriculture.

Management Intent

Management Subunit 19A. The state will offer up to 500 acres of land for private ownership in this subunit. This area has good tree cover and reasonably good trail access from the Richardson Highway. Due to extensive winter shadows, this area is more suitable for recreational cabins than year-round settlement. The Squirrel Creek trail will be kept in public ownership because it provides important access for hunting, recreation, and future forestry uses.

Management Subunit 19B. This large block of partially forested land will be retained in public ownership for multiple use. Primary surface values are forestry, recreation, and wildlife habitat. The area also receives some recreational use because it is high, open country good for cross country skiing and snowmobiling. This subunit will be open to mineral entry.

Management Subunit 19C. Most of this land has conflicting state and Native land selections. The land has fairly high values for forestry, agriculture, and settlement. State-owned or state-selected tracts will be retained in public ownership and managed for multiple use. If the state is successful in acquiring sufficient, suitable land in the subunit, approximately 500 acres (net) would be available for agricultural or nonagricultural settlement. Any state-owned land will be open to mineral entry.

Management Subunit 19D. This small block of land is state owned and has agricultural, forestry, and settlement values. It is available for a mixture of agricultural and nonagricultural settlement. Approximately 1,000 acres (net) will be available for settlement or agriculture. Existing access to the area is by a 25-foot-wide 17(b) easement. Before offering the area for land conveyances, the state should provide a route for adequate access to accommodate agricultural or settlement uses. Access via section line easements may also be a possibility.

Management Guidelines

Squirrel Creek Trail. This trail provides access for recreation and hunting and will be retained in public ownership. The trail could also provide access for future timber harvest in the area.

The complete set of management guidelines is presented in Chapter 2. Any of the guidelines could apply to uses within this management unit; however, guidelines that are most likely to apply are:

- Fish and wildlife habitat
- Forestry
- Settlement
- Public access

LAND USE DESIGNATION SUMMARY

MANAGEMENT UNIT: 19 - Squirrel Creek/Mount DuRelle

SUBUNIT	LAND OWNERSHIP (GENERALIZED)	LAND USE DESIGNATIONS				PROHIBITED SURFACE USE(S)*	COMMENTS
		SURFACE		SUBSURFACE			
		PRIMARY USE(S)	SECONDARY USE(S)	LOCATABLE MINERALS	LEASEABLE MINERALS		
19A	State	Settlement	Forestry Wildlife habitat	Open to mineral entry except disposal area closed before offering	Available for leasing	Remote cabins Trapping cabins in land offering	Potential net land offerings - 500 acres
19B	State, State-Native selected	Forestry, Wildlife habitat	Public recreation	Open to mineral entry	Available for leasing	Land offerings Remote cabins	
19C	State, State-Native selected	Resource management, high value	Agriculture Forestry Settlement	Open to mineral entry	Available for leasing	Remote cabins	Possible net land offerings - 500 acres
19D	State	Agriculture, Settlement	Forestry	Open to mineral entry except disposal area closed before offering	Available for leasing	Remote cabins	Potential net land offerings - 1,000 acres

* Other uses such as material sales, land leases, or permits, that are not specifically prohibited may be allowed. Such uses will be allowed if consistent with the management intent statement, the management guidelines of this unit, and the relevant management guidelines listed in Chapter 2.

3-130

ACE 6329516

RESOURCE INFORMATION SUMMARY

Management Unit 19 - Squirrel Creek - Mount DuRelle

RESOURCE	SUBUNIT			
	19A	19B	19C	19D
Fish	none docum.	salmon - s/r/m steelhead	none docum.	none docum.
Forestry	moderate conif. & decid.	high to mod- erate conif. & decid.	high to mod- erate conif.	high to moderate conif.
Historic-Cultural	unknown	unknown	unknown	unknown
Minerals	low	high at Mount DuRelle lake; low in other areas	outside of known mineral terranes	outside of known mineral terranes
Oil and Gas	unknown	low	low	unknown
Recreation	low	moderate; scenic, high country	moderate; scenic, high country	low
Settlement Suitability	low to moderate	variable	low	low to moderate
Wildlife	B-2 habitat	B-2 habitat	B-2 habitat, some swan nesting habitat	B-2 habitat, some swan nesting habitat

Important trails:

Subunit 19A and 19B: Squirrel Creek trail, easement reserved from Richardson Hwy. in
Sec. 26, T2S, R1E across Chugach Alaska lands

Trail from Richardson Hwy. to Willow Mtn, Stuck Mtn., and north side of Mt. DuRelle

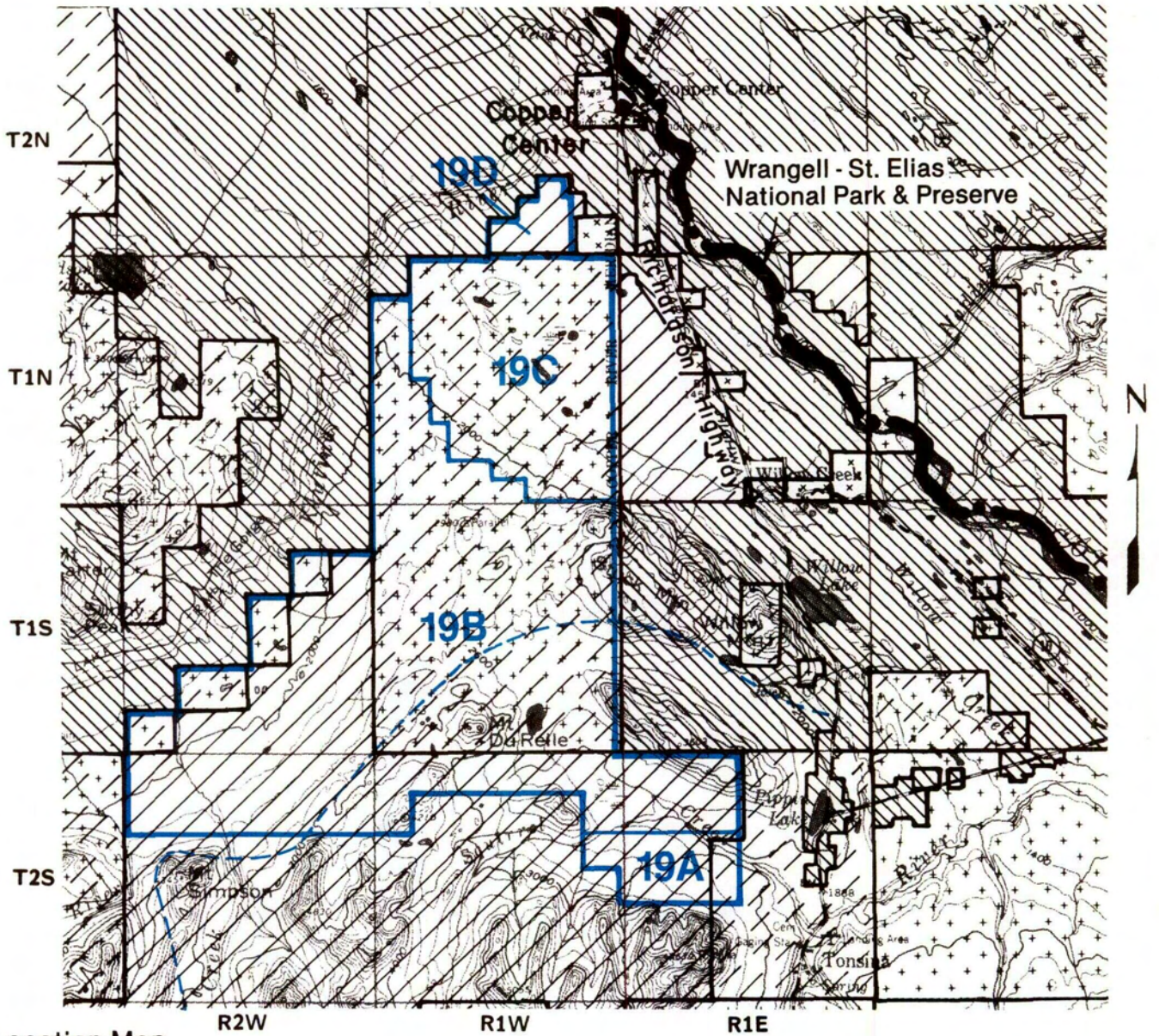
Subunit 19D: 17(b) easement from Copper Center

Section line easement reportedly provides access

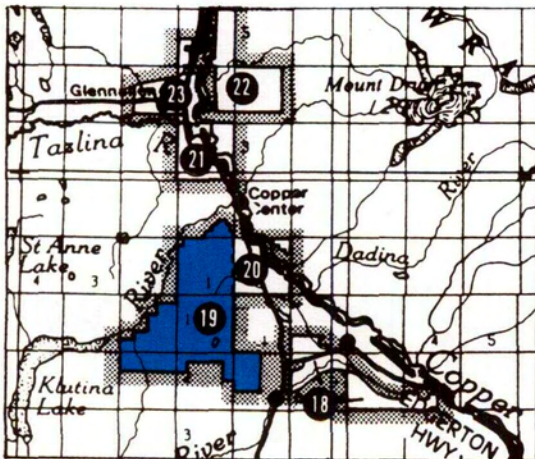
For definitions of ratings, see glossary. For more detailed information on any resources,
see resource elements published under separate cover.

MANAGEMENT UNIT 19

Squirrel Creek/Mt. DuRelle




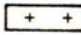
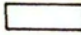



Location Map



U.S.G.S. Quad:
Valdez

Map scale:
1:250,000

-  State Owned
-  State Selected
-  Native/Private Owned
-  Native Selected
-  Federal
-  Trails on public lands

Map shows approximate location of easements to state land and major trails across state land. Portions of trails may cross private lands. See appendix D.