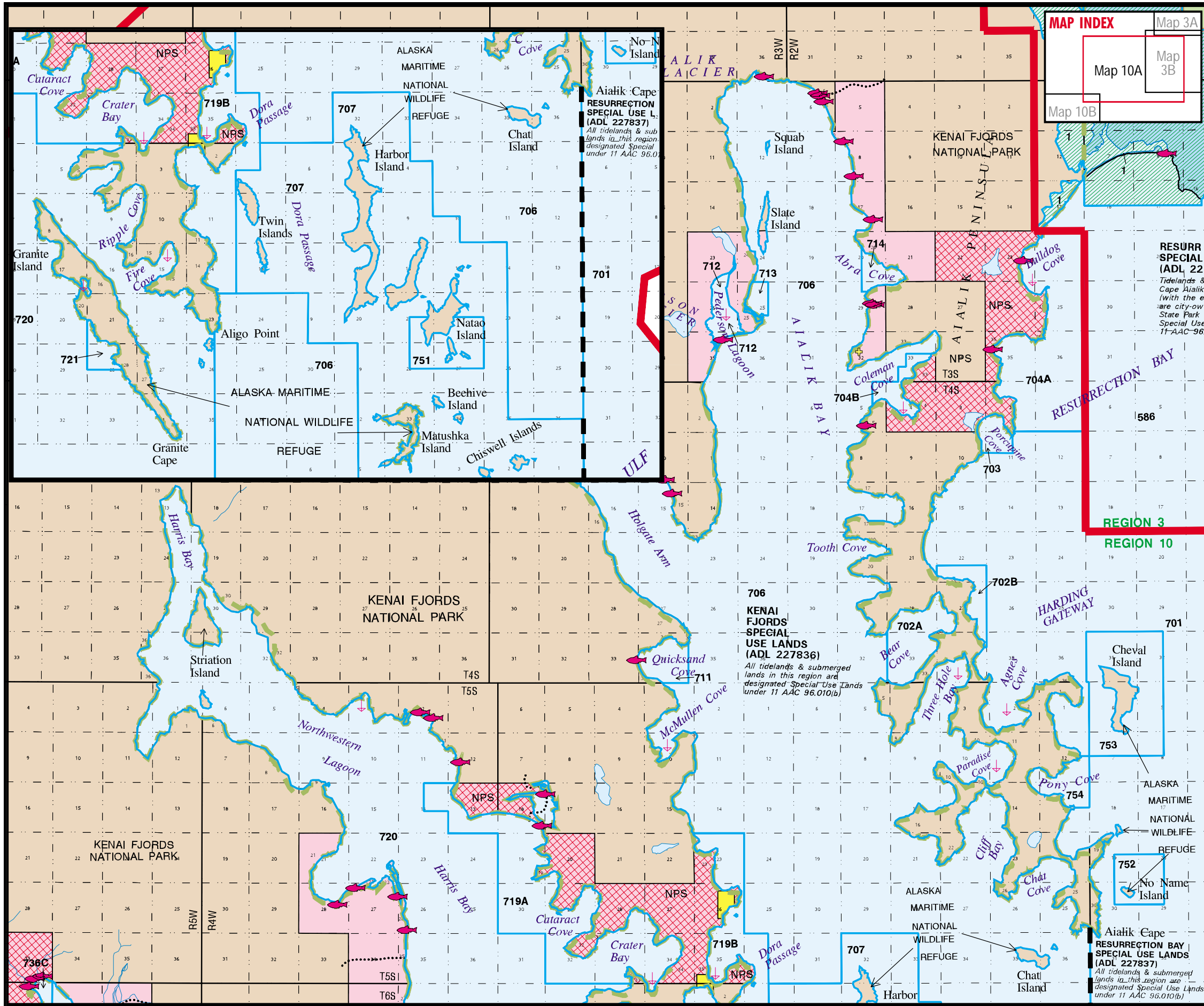


REGION 10

Map 10A - Aialik & Harris Bays



Unit	Designation	Unit	Designation
1	rd	714	ha
586	rh	719A	ha rd
701	rd	719B	ha rd
702A	ha rd	720	rd
702B	ha rd	721	ha
703	ha	736C	ha
704A	ha rd	751	ha
704B	ha rd	752	ha
706	rd	753	ha
707	ha rd	754	ha
711	ha		
712	ha		
713	ha		

LEGEND

- State owned
- State Park
- Ak. Dept. of Fish & Game
- Ak. Dept. of Trans. & Pub. Facilities
- Borough, City owned
- Natl. Park, Wildlife Refuge or Forest
- Bureau of Land Management
- Native Corporation
- Private
- Mental Health Trust
- State Selected
- Proposed addition to Kenai River SMA
- Proposed addition to State Park system
- Exxon Valdez Oil Spill acquisition
- Borough/City Selected
- City Tidelands
- Legislatively designated area
- Unit boundary
- Special Use Lands
- Region and/or Plan boundary
- Natl. Park, Wildlife Refuge or Forest bdy.
- Anchorage
- Anadromous stream mouth
- 35A** Unit number