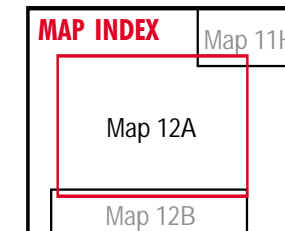
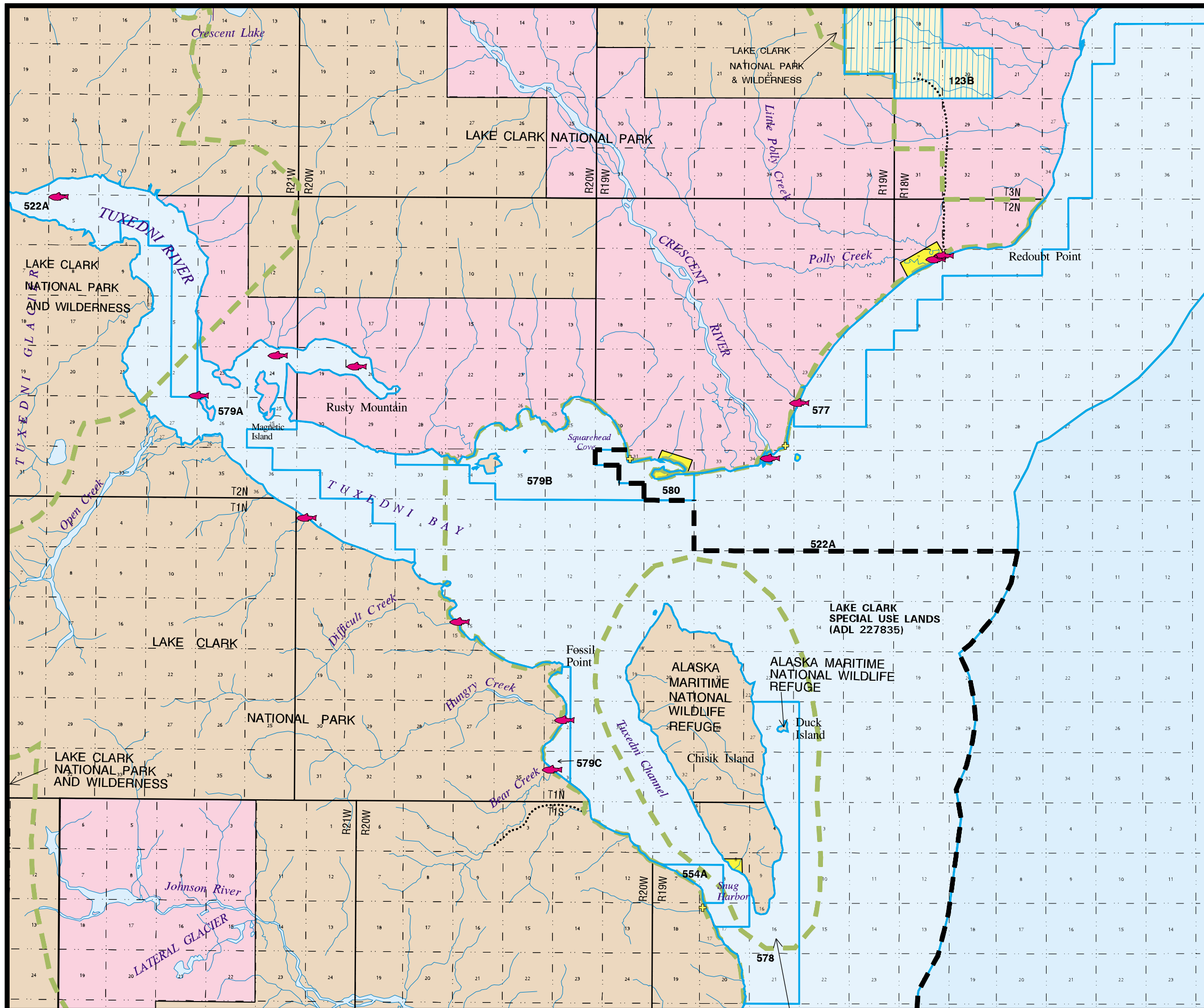


REGION 12

Map 12A - Tuxedni Bay



Unit	Designation
123B	gu
522A	rd
554A	rh
577	ha hv
578	ha
579A	ha
579B	ha
579C	ha
580	wd



LEGEND

- State owned
- State Park
- Ak. Dept. of Fish & Game
- Ak. Dept. of Trans. & Pub. Facilities
- Borough, City owned
- Natl. Park, Wildlife Refuge or Forest
- Bureau of Land Management
- Native Corporation
- Private
- Mental Health Trust
- State Selected
- Proposed addition to Kenai River SMA
- Proposed addition to State Park system
- Exxon Valdez Oil Spill acquisition
- Borough/City Selected
- City Tidelands
- Legislatively designated area
- Unit boundary
- Special Use Lands
- Region and/or Plan boundary
- Natl. Park, Wildlife Refuge or Forest bdy.
- Anchorage
- Anadromous stream mouth
- 35A Unit number