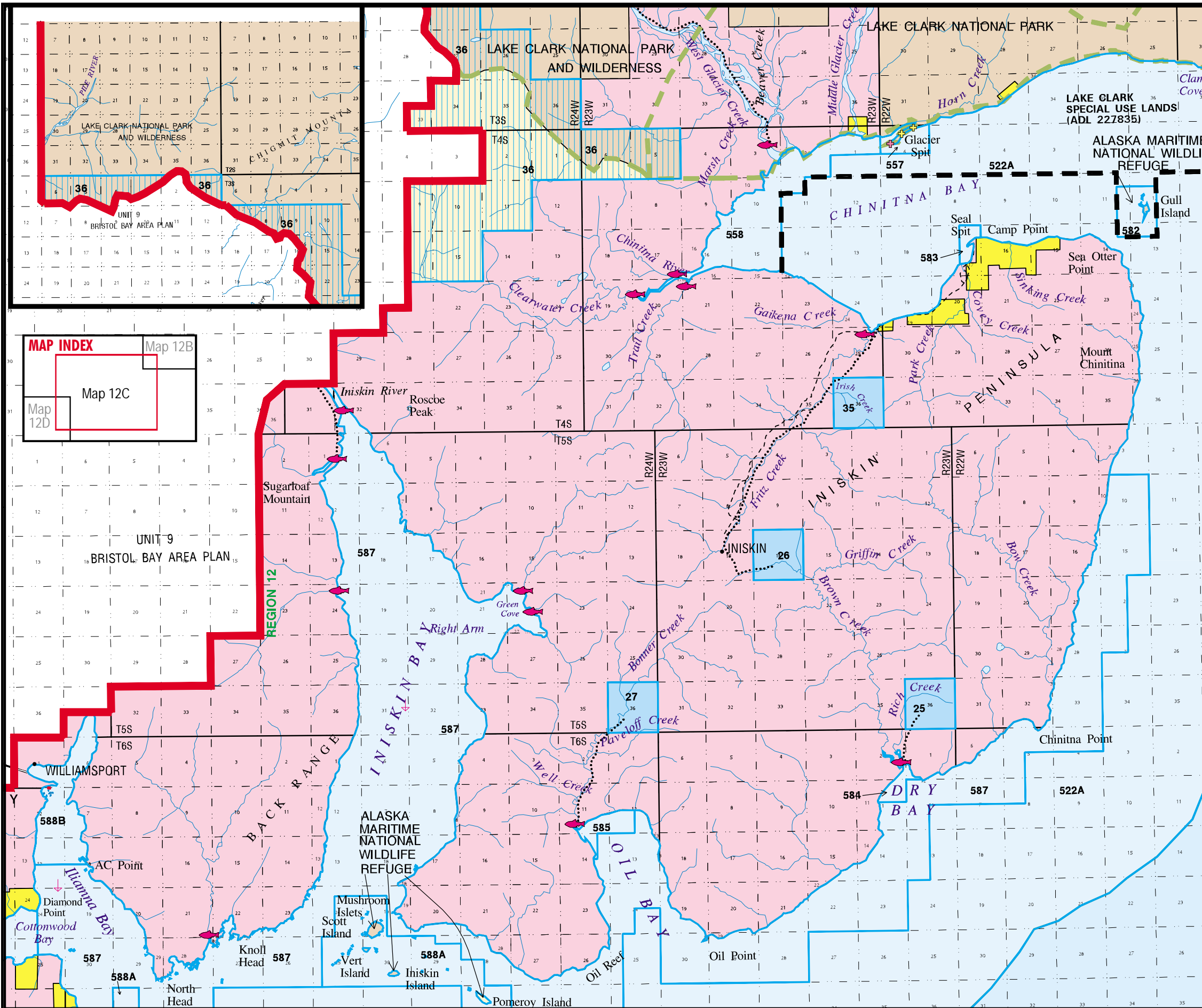
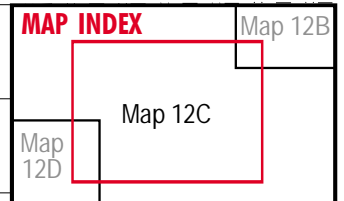


REGION 12

Map 12C - Chinitna & Iniskin Bays



Unit	Designation	Unit	Designation
25	fo	587	ha
26	fo	588A	ha
27	fo	588B	wd
35	fo	301	gu
36	gu	506A	gu
522A	rd	506B	gu
557	ha		
558	ha		
582	ha		
583	rh		
584	rh		
585	rh		



LEGEND

- State owned
- State Park
- Ak. Dept. of Fish & Game
- Ak. Dept. of Trans. & Pub. Facilities
- Borough, City owned
- Natl. Park, Wildlife Refuge or Forest
- Bureau of Land Management
- Native Corporation
- Private
- Mental Health Trust
- State Selected
- Proposed addition to Kenai River SMA
- Proposed addition to State Park system
- Exxon Valdez Oil Spill acquisition
- Borough/City Selected
- City Tidelands
- Legislatively designated area
- Unit boundary
- Special Use Lands
- Region and/or Plan boundary
- Natl. Park, Wildlife Refuge or Forest bdy.
- Anchorage
- Anadromous stream mouth
- 35A** Unit number