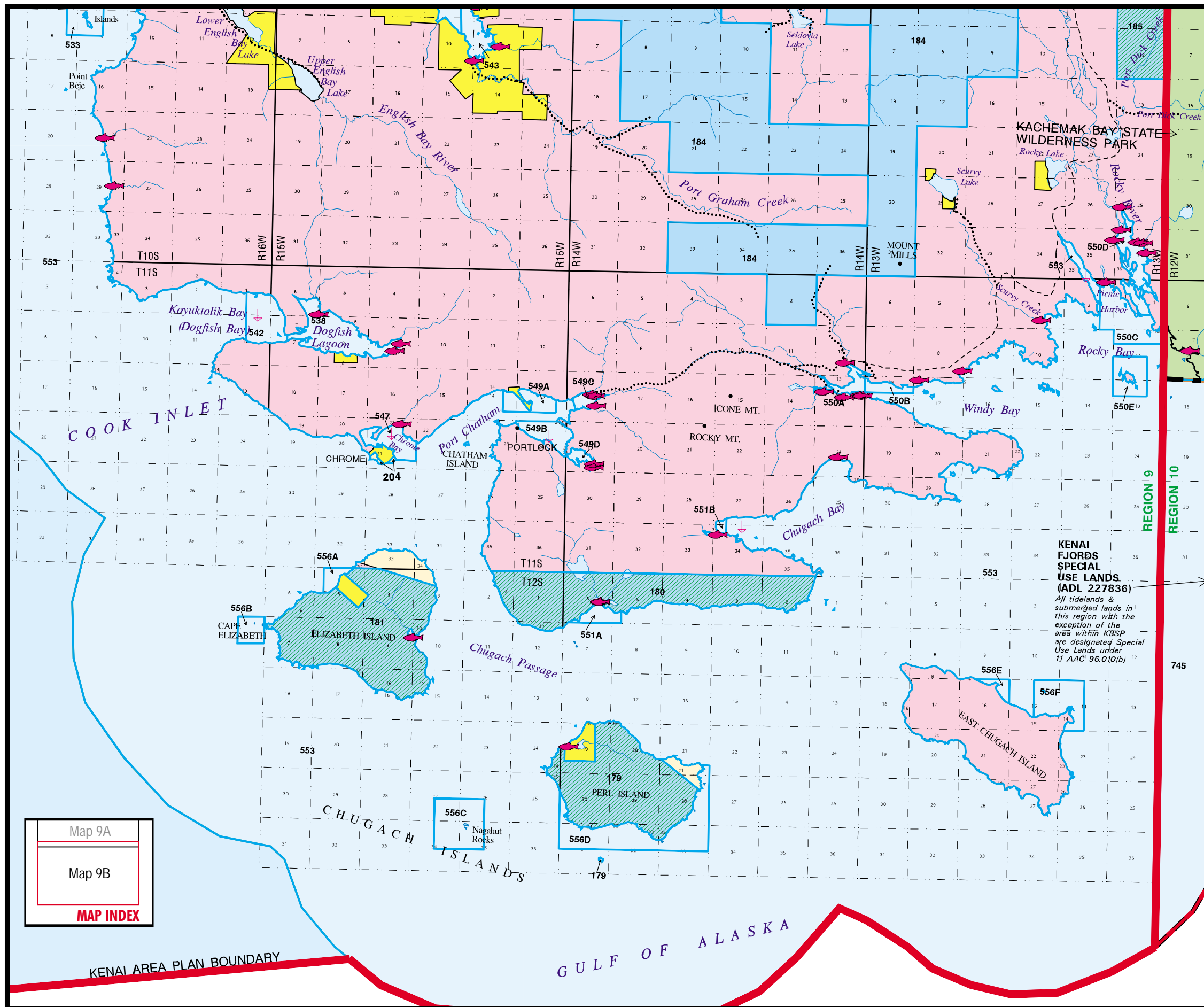


# REGION 9

## Map 9B - Chugach Islands



Unit	Designation	Unit	Designation
179	rd	553	rh
180	rd	556A	rh
181	rd	556B	ha
184	rd	556C	ha
185	ha	556D	ha
204	rd	556E	rh
533	ha	556F	ha
538	ha	745	rd
542	rh		
547	ha		
549A	rh		
549B	rh		
549C	ha		
549D	ha		
550A	ha		
550B	wd		
550C	ha		
550D	ha		
550E	ha		
551A	wd		
551B	ha		

### LEGEND

- State owned
- State Park
- Ak. Dept. of Fish & Game
- Ak. Dept. of Trans. & Pub. Facilities
- Borough, City owned
- Natl. Park, Wildlife Refuge or Forest
- Bureau of Land Management
- Native Corporation
- Private
- Mental Health Trust
- State Selected
- Proposed addition to Kenai River SMA
- Proposed addition to State Park system
- Exxon Valdez Oil Spill acquisition
- Borough/City Selected
- City Tidelands
- Legislatively designated area
- Unit boundary
- Special Use Lands
- Region and/or Plan boundary
- Natl. Park, Wildlife Refuge or Forest bdy.
- Anchorage
- Anadromous stream mouth
- 35A** Unit number