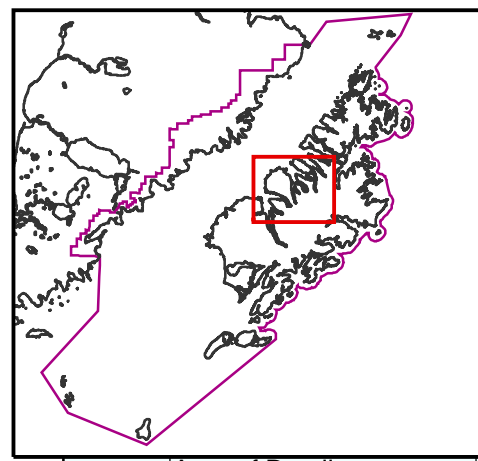
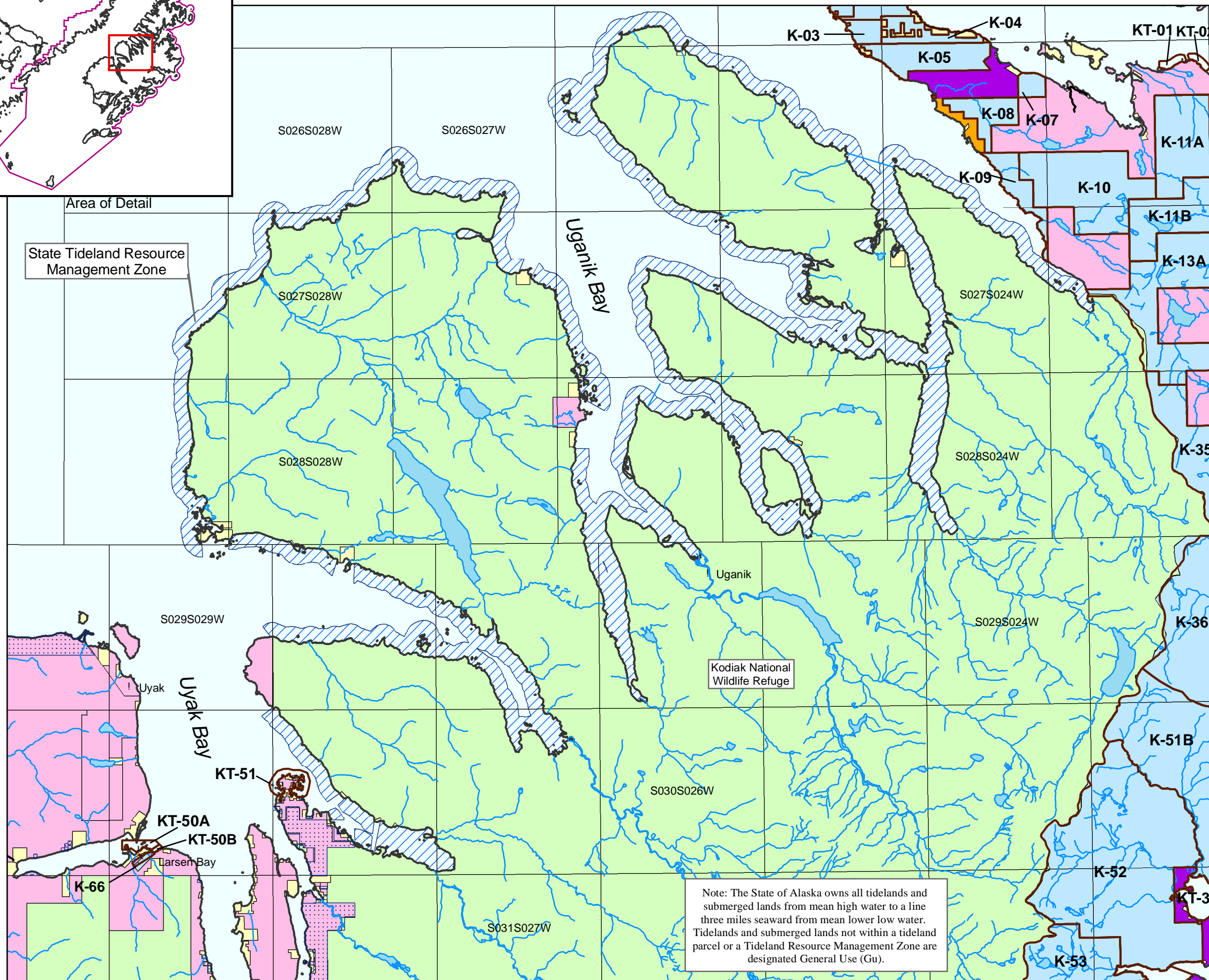


# MAP 3-8 Kodiak Region



Area of Detail

State Tideland Resource Management Zone



Note: The State of Alaska owns all tidelands and submerged lands from mean high water to a line three miles seaward from mean lower low water. Tidelands and submerged lands not within a tideland parcel or a Tideland Resource Management Zone are designated General Use (Gu).

**Parcels and Designations**

Upland Parcels:		Tideland Parcels:	
K-03	Se	KT-01	Ha,Hv
K-04	Se	KT-02	Ha,Hv
K-05	Gu	KT-31	Ha,Hv
K-06	Rd	KT-50A	Sd
K-07	Gu	KT-50B	Pr
K-08	Gu	KT-51	Ha,Hv
K-09	Se		
K-10	Gu		
K-11A	Gu		
K-11B	W		
K-13A	Gu		
K-35	Gu		
K-36	Rd,Gu		
K-51B	Gu		
K-52	Gu		
K-53	Ha		
K-66	Pr		

**LEGEND**

	Plan Boundary
	Management Unit Boundary
	Tideland Resource Management Zone
<b>Land Ownership</b>	
	State Land
	Limited State Holding Land
	National Park & Preserve, or Wildlife Refuge
	Municipal Land
	Mental Health Trust Lands
	Native Corporation Patented & Selected Land
	Private or Other Land