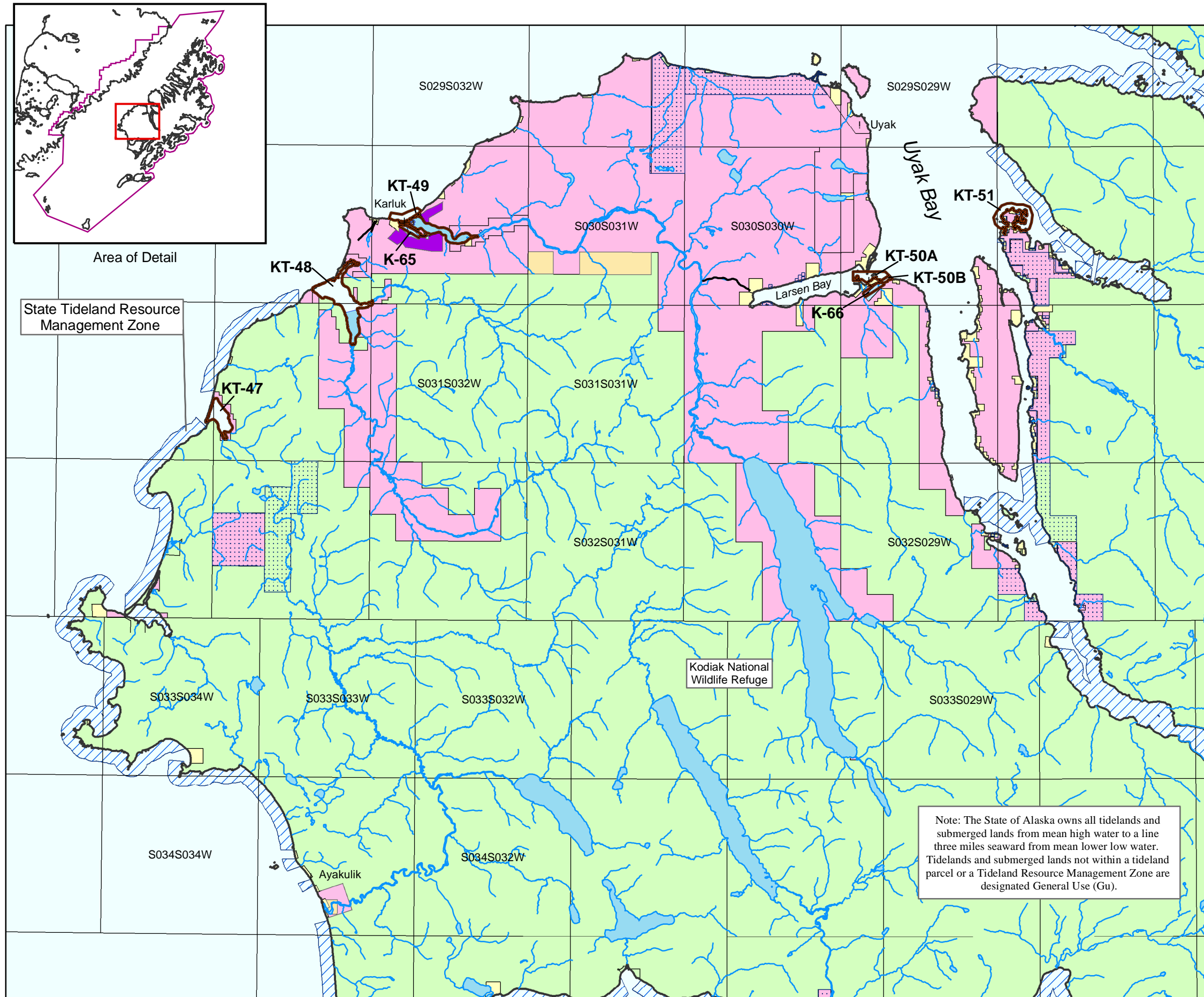


MAP 3-9 Kodiak Region



Parcels and Designations

Upland Parcels:		Tideland Parcels:	
K-65	Pr	KT-47	Ha,Hv
K-66	Pr	KT-48	Ha,Hv
		KT-49	Ha,Hv
		KT-50A	Sd
		KT-50B	Pr
		KT-51	Ha,Hv

LEGEND

- Plan Boundary
- Management Unit Boundary
- Tideland Resource Management Zone

Land Ownership

- Limited State Holding Land
- National Park & Preserve, or Wildlife Refuge
- Bureau of Land Management Land
- Municipal Land
- Native Corporation Patented & Selected Land
- Private or Other Land

Note: The State of Alaska owns all tidelands and submerged lands from mean high water to a line three miles seaward from mean lower low water. Tidelands and submerged lands not within a tideland parcel or a Tideland Resource Management Zone are designated General Use (Gu).