

# MANAGEMENT UNIT 14: STONY RIVER

---

## Background

---

**Location and Land Ownership.** This unit contains the land in the watershed of the Stony River from the western edge of the Alaska Range to the Kuskokwim River. Most of the eastern and western thirds of the unit are state owned, with small areas of state selections. The central region is Native-owned and Native-selected land along the Stony River and around Lime Village and Tundra Lake; the remainder is federal land. Lands on the Kuskokwim River and the lower reaches of the Stony River also are Native owned. There are about fifty parcels of private land, mostly Native allotments on the Stony River, at Lime Village, or on Tundra ("6-0") or Trout Lake. Four of the parcels are federal homesites or trade and manufacturing sites.

**Resources and Land Use.** The Lime Hills cut across the unit near Lime Village, and mountains up to 3,800 feet elevation ring the upper boundary. The remainder of the unit is low country. A narrow band of white spruce and hardwood forest lines the Stony and Stink rivers, but most of the unit is covered by shrublands and vast muskegs.

Stony River Village is on the northern edge of the unit, at the confluence of the Stony and Kuskokwim rivers. Lime Village is on the Stony River in the center of the unit. Residents of these communities, and to a lesser extent Sleetmute, Red Devil, Crooked Creek, Chuathbaluk, and Aniak residents, use the Stony River watershed for hunting, trapping, and fishing for salmon and whitefish. Sport hunting by individuals and guided parties has increased rapidly in recent years. Portions of six registered guiding areas are within the unit. There is some use of the upper Stony River for recreation, primarily float trips by hunting parties. Settlement suitability and forestry potential are very low on most state lands. Potential is limited to forested, riverfront lands along the Stony River downstream from Lime Village, and the lower Stink River. Mineral potential is low to very low

throughout the unit, and there are no mining claims. Materials have been extracted from state submerged lands at the confluence of the Stony and Kuskokwim rivers in the past.

**Access.** The Stony and Kuskokwim Rivers are navigable, and provide the main access to this unit. In addition, a number of large lakes on state and Native lands provide plane access, and a public airstrip is maintained at Lime Village.

## Management Intent

---

State lands in this unit will be retained in public ownership and managed for multiple use with emphasis on fish and wildlife habitat and harvest, and, along the river, on timber harvesting for local use. Remote cabin permits will be allowed in a portion of the upper watershed to provide opportunities for private recreation. Although much of the land along the major waterways in this unit is Native owned or selected, the beds of the Kuskokwim River, the Stony River, and other navigable waters are state owned and are subject to the guidelines of this plan.

### Subunit 14a - Stony River Corridor

This subunit consists of state-owned lands and state and overlapping state and Native selections along the Stony River downstream from Lime Village. Forests along the banks of the river provide houselogs and firewood, and are important moose winter range. This subunit will be retained in public ownership and managed for multiple use with emphasis on protection of fish, wildlife, and forest resources, and continued personal and commercial use of these resources. Approximately 4,480 acres of land adjacent to the northern edge of this subunit are proposed for selection because of habitat and timber resources, and in order to consolidate state land holdings in this area. If conveyed to the state, these lands will be managed as part of subunit 14a.

### **Subunit 14b - Tishimna Lake**

Subunit 14b covers three blocks of high value habitat lands west of Lime Village that are not along the main river corridor. They include the Stink River drainage and land around Tishimna Lake. The lake is an important site for local harvest of whitefish. These lands will be retained in state ownership, and managed for multiple use, with emphasis on fish and wildlife habitat and personal and commercial harvesting of fish and wildlife resources. One section (640 acres) of land surrounded by the state lands in subunit 14b is proposed for selection for its habitat resources and in order to consolidate state land ownership in this area. If conveyed to the state, this section will be managed as part of subunit 14b.

### **Subunit 14c - Hinterlands**

The Hinterlands subunit comprises five blocks of land with low surface and subsurface resource values and little access. These lands will be retained in public ownership and managed for general multiple use. Part of the subunit will be open to remote cabin permits. The southeastern boundary of this subunit borders Lake Clark National Park. The present boundary between the park and state land is crossed twice by the Stony River. The general management plan for the national park identifies some park lands in this area as suitable for land exchange. Exchange of land in the upper Stony River area to clarify the park boundary would be compatible with the management intent for this subunit.

### **Subunit 14d - Upper Stony**

Three blocks of high value habitat -- including moose winter range -- between Lime Village and the front of the Alaska Range form subunit 14d. Included are lands along the Stony and lower Telaquana rivers, and Little Underhill, Underhill, Rock, and Tunkaleshna creeks. This portion of the river is also used for float trips from Lake Clark National Park. Applications are pending for two guide sites in subunit 14d. This subunit will be retained in public ownership and managed for multiple use, particularly fish and wildlife habitat, personal and commercial harvesting of fish and

wildlife resources, and public recreation. The northeastern portion of the subunit will be open for remote cabin permits. State land in this subunit is open to new mineral entry. The southeastern boundary of this subunit borders Lake Clark National Park. The present boundary between the park and state land is crossed twice by the Stony River. The general management plan for the national park identifies some park lands in this area as suitable for land exchange. Exchange of land in the upper Stony River area to clarify the park boundary would be compatible with the management intent for this subunit.

## **Management Guidelines**

The complete set of areawide management guidelines is presented in Chapter 2. Any of the guidelines could apply to uses within this management unit. Those most likely to apply are listed below:

- Fish and wildlife habitat
- Forestry
- Public and commercial recreation resources
- Remote cabins

Guidelines specific to this management unit are listed by subunit in the following sections.

### **General**

**Grazing.** Grazing leases or permits generally will not be allowed in the following areas because of their importance as moose winter concentration zones (Map 2.1). Temporary passage of livestock is not prohibited through these areas to reach areas where grazing is permitted. Grazing may be allowed in portions of these areas if consistent with the guideline in Chapter 2 ("Grazing on Important Habitat Lands")

- Within 2 miles of the Stony River below Lime Village and above Salmonberry Lake.
- West of the Stony River and north of the north half of T15N S.M.
- T20N R39W S.M. sec. 15-17, 19-21, 29 & 30

T16N R29W S.M. sec. 25-28 & 34-36  
T15N R29W S.M. sec. 1-3, 10-15, 21-28 &  
32-36  
T14N R29W S.M. sec. 1-5, 7-18, 20-28 &  
34-36  
T13N R29W S.M. sec. 1, 2, 12, 13, 24, 25  
& 36  
T12N R29W S.M. sec. 1-3, 5-9 & 11-36

### **Subunit 14a and 14c - Stony River Corridor and Hinterlands**

**Agriculture Potential.** Preliminary ratings in the USDA Exploratory Soil Survey show portions of these subunits as having moderate potential for agriculture but detailed information to confirm these ratings is unavailable. In order to protect options for long-term use of these lands, the Division of Agriculture should be consulted prior to issuing permits or leases for any activities which would significantly diminish their capability to support agriculture.

### **Subunit 14b - Tishimna Lake**

**Commercial Recreation Leases.** Tishimna Lake (known locally as Whitefish Lake) is an important whitefish harvesting site for Lime Village residents. There is an existing lodge near the lake. Commercial leases for lodges will not be granted within one mile of Tishim-

na Lake in order to protect the traditional fish harvesting in the lake.

### **Subunits 14c and 14d - Hinterlands and Upper Stony**

**Remote Cabin Permit Areas.** Parts of these subunits are within the Little Underhill block of the Alaska Range remote cabin permit area. Boundaries of the area open for remote cabin permits are shown on Map 2.2. Parts of subunits 11a, 11b, and 12a are also within this block. A total of 19 remote cabin permits will be allowed in the Little Underhill block, with a maximum of one remote cabin permit allowed in any one township. A building setback of at least fifty feet will be required from the ordinary high water mark of Little Underhill and Rock creeks which are anadromous streams.

### **Navigable Waters**

**Peregrine Falcon Nest.** There is a peregrine falcon nest along the Kuskokwim River northeast of Stony River village. The Habitat Division of the Department of Fish and Game should be consulted prior to issuing permits or leases on the state-owned beds of navigable waters in T20N R39W S.M. sections 4-8 and 18 and T20N R40W S.M. sections 12-14 and 23-24.

# RESOURCE INFORMATION SUMMARY

## Management Unit 14 - Stony River

Resource	Subunit			
	14a	14b	14c	14d
Agriculture	Portions with moderate potential; rest low	Low potential to unsuitable	Portions w/moderate potential; rest low	Low to very low potential
Energy	—		—	—
Fish	Stony R.: salmon & resident fish	Stink R.: salmon & resident fish; major tribs.: salmon	Telaquana R.: salmon & resident fish	Stony & Telaquana: salmon & resident fish; major tribs.: salmon
Forestry	High potential for local use	High potential for local use along Stink R.; rest unsuited	Unsuited	Unsuited
Grazing	High potential	Most high potential; some moderate	High potential	High potential
Historic/cultural	High potential	Unknown	Unknown Stony River	High potential along
Materials	Unknown	Low potential	Low potential	Unknown
Minerals	Low to very low potential	Low to very low potential	Low to very low potential	Low to very low potential
Oil & gas	Within Holitna sedimentary basin	Most within Holitna sedimentary basin	Blocks west of Lime Village within Holitna	Unknown
Public access	Boat along Stony R. poss. Stink R.; plane access to several lakes	Boat along Stony R. & plane access to narrow lakes in N block	Access limited; poss. some seasons; plane to one lake	Boat along Stony R. in
Recreation	Low potential	Unknown	Unknown potential along Stony R.	Moderate use and
Settlement suitability	High	High along Stink R.; rest low to unsuited	Unsuited	Most unsuited; pockets of low and high
Wildlife	A-2; moose winter range; bear, caribou, waterfowl	A-2/B-1; part moose winter range; bear, caribou, waterfowl	B-2; bear, caribou, moose	A-2/B-1; moose winter range; waterfowl along Stony R. and Little Underhill; bear, caribou
Important trails	None identified	None identified	None identified	None identified

See glossary for definition of ratings.

# LAND-USE DESIGNATION SUMMARY

## MANAGEMENT UNIT 14 - STONY RIVER

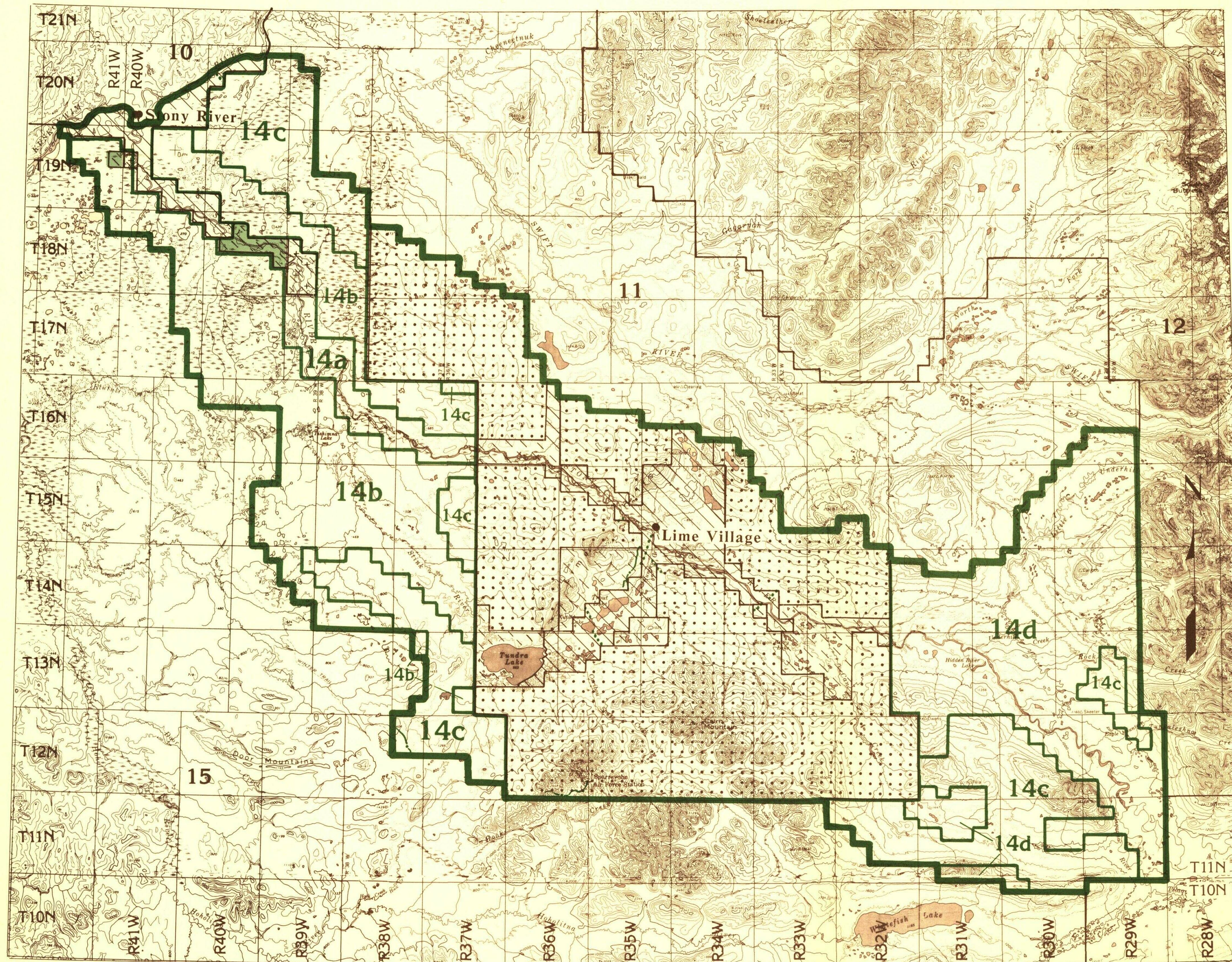
SUBUNIT	LAND OWNERSHIP	LAND USE DESIGNATIONS				COMMENTS
		Primary Surface Uses	Secondary Surface Uses	Prohibited Surface Uses <sup>a</sup>	Subsurface <sup>b</sup>	
14a Stony River Corridor	Most state; some state selected/ Native selected	Forestry Wildlife habitat	Public recreation	Grazing Land disposals Remote cabins	Open	Includes proposed selections
14b Tishimna Lake	Most state; 1 section state select/ Native select.	Wildlife habitat	Forestry Public recreation	Grazing in part of subunit Land disposals Remote cabins Commercial lodges on Tishimna Lake	Open	Includes proposed selections
14c Hinterlands	State	General use: low resource values	Remote cabins in part of subunit	Land disposals Remote cabins in most of subunit	Open	
14d Upper Stony	State	Public recreation Wildlife habitat	Forestry Remote cabins in part of subunit	Grazing in part of subunit Land disposals Remote cabins in part of subunit	Open	

<sup>a</sup>Other uses such as material sales, land leases, or permits that are not specifically prohibited may be allowed. Such uses will be allowed if consistent with the management-intent statement, the management guidelines of this unit, and the relevant management guidelines listed in Chapter 2. Grazing may be allowed in portions of closed units when consistent with the guideline in Chapter 2 (Grazing on Important Habitat Lands).

<sup>b</sup>All areas are available for leasing for leasable minerals. Statements of whether or not the unit is open to mineral entry refer only to locatable minerals.



# 14: Stony River

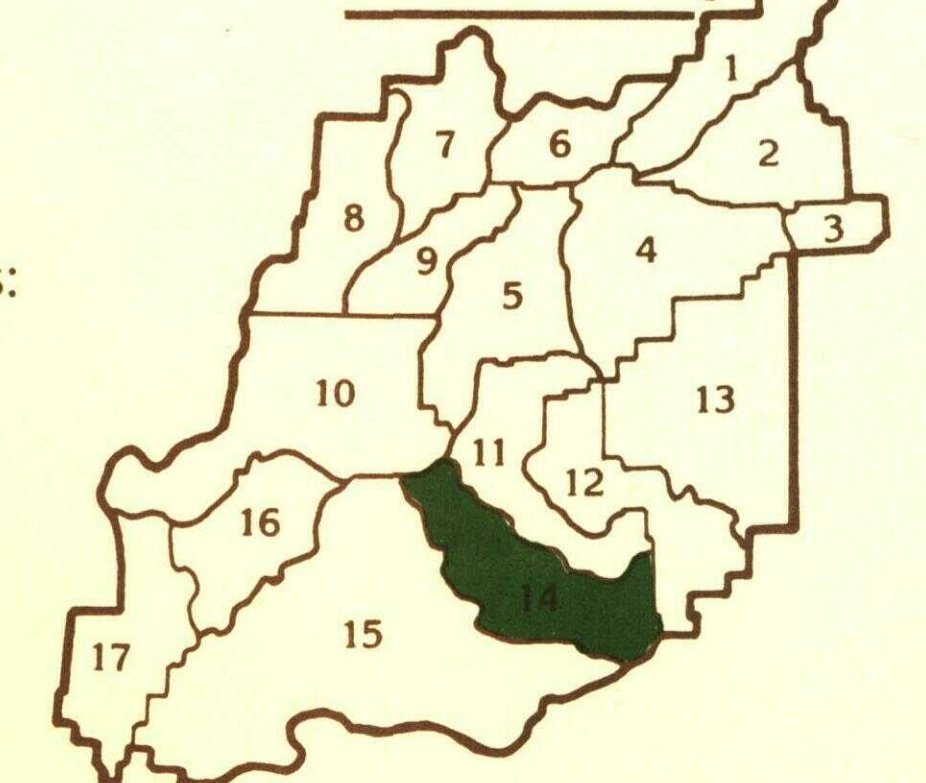


— Management Unit Boundary  
 — Subunit Boundary

- State Owned
- State Selected
- Native Owned
- Native Selected
- Federal
- Proposed State Selections
- Trails on public lands
- Access easements to public land  
ANCSA 17 (b) easements  
& State Omnibus roads

Map shows approximate location of easements to state land and trails across state land. Portions of trails may cross private lands.

Location Map



U.S.G.S. Quads:  
 Sleetmute  
 Lime Hills  
 Lake Clark  
 Taylor Mts.

Map Scale:  
 1:500,000