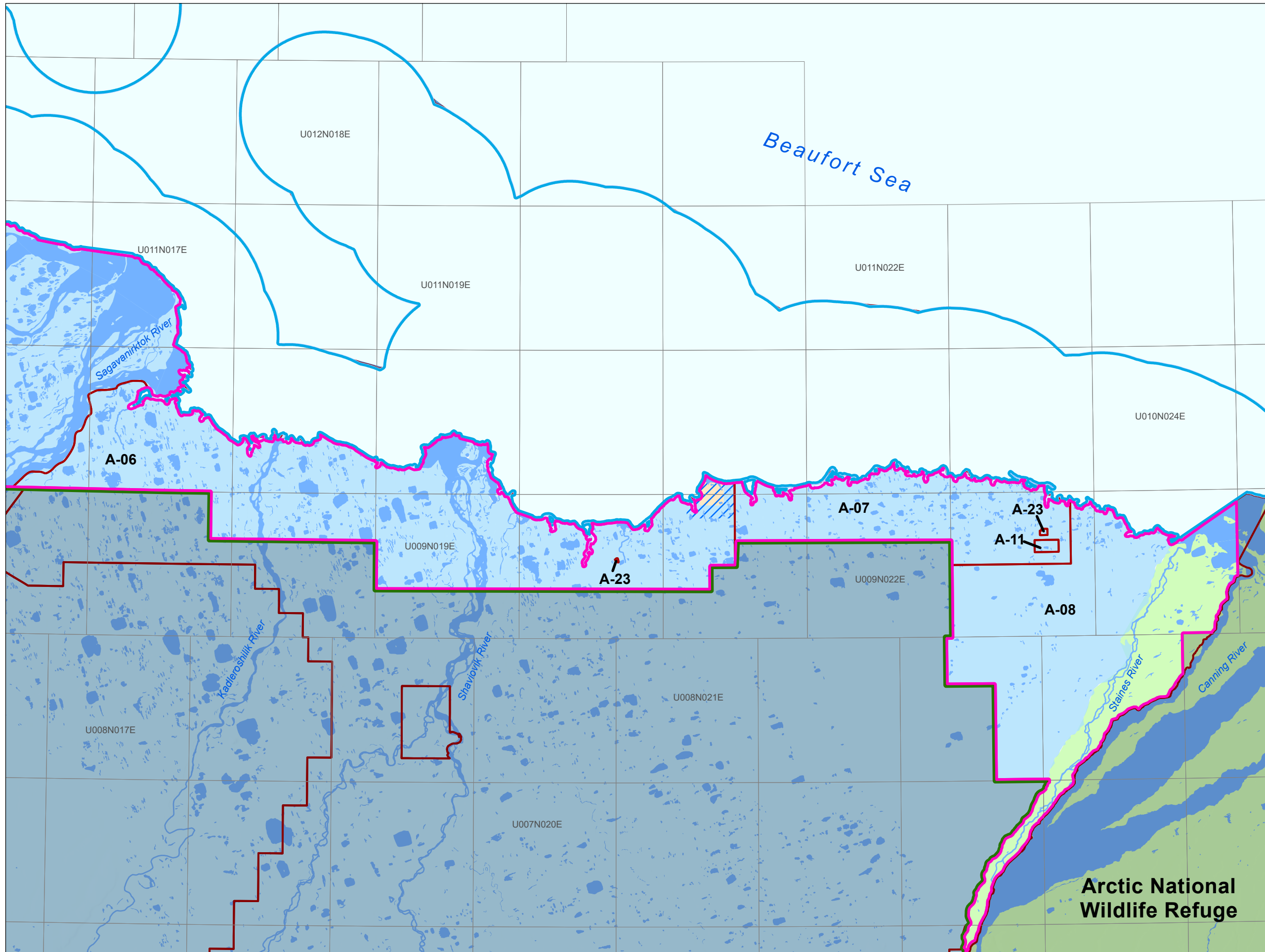


**North Slope Area Plan  
Map 3-2.3  
Arctic Coast Region  
East Planning Units  
and Designations**



- Arctic Coast
- Planning Units
- Borough Lands
- Private Lands
- State Lands
- Native Lands
- State Selections
- Native Selections
- BLM
- NPS/USFWS

**Unit Designations**

- A-06 Og, Ha
- A-07 Og, Ha
- A-08 Og, Ha
- A-11 Rm
- A-23 Ma



Land use designations only apply to land owned by the State Department of Natural Resources, as indicated by the management units on this map. There are some small private parcels contained within these units but the designation does not apply to these non-state lands.

This map is for graphic representation only and is intended to be used only as a guide. Areas outside of the planning area are shaded out. Colors may appear darker.  
Created: May, 2021 IJE, JLG, DNR, DMLW, RADS  
Projected Coordinate System: NAD 1983 UTM Zone 6 North

