



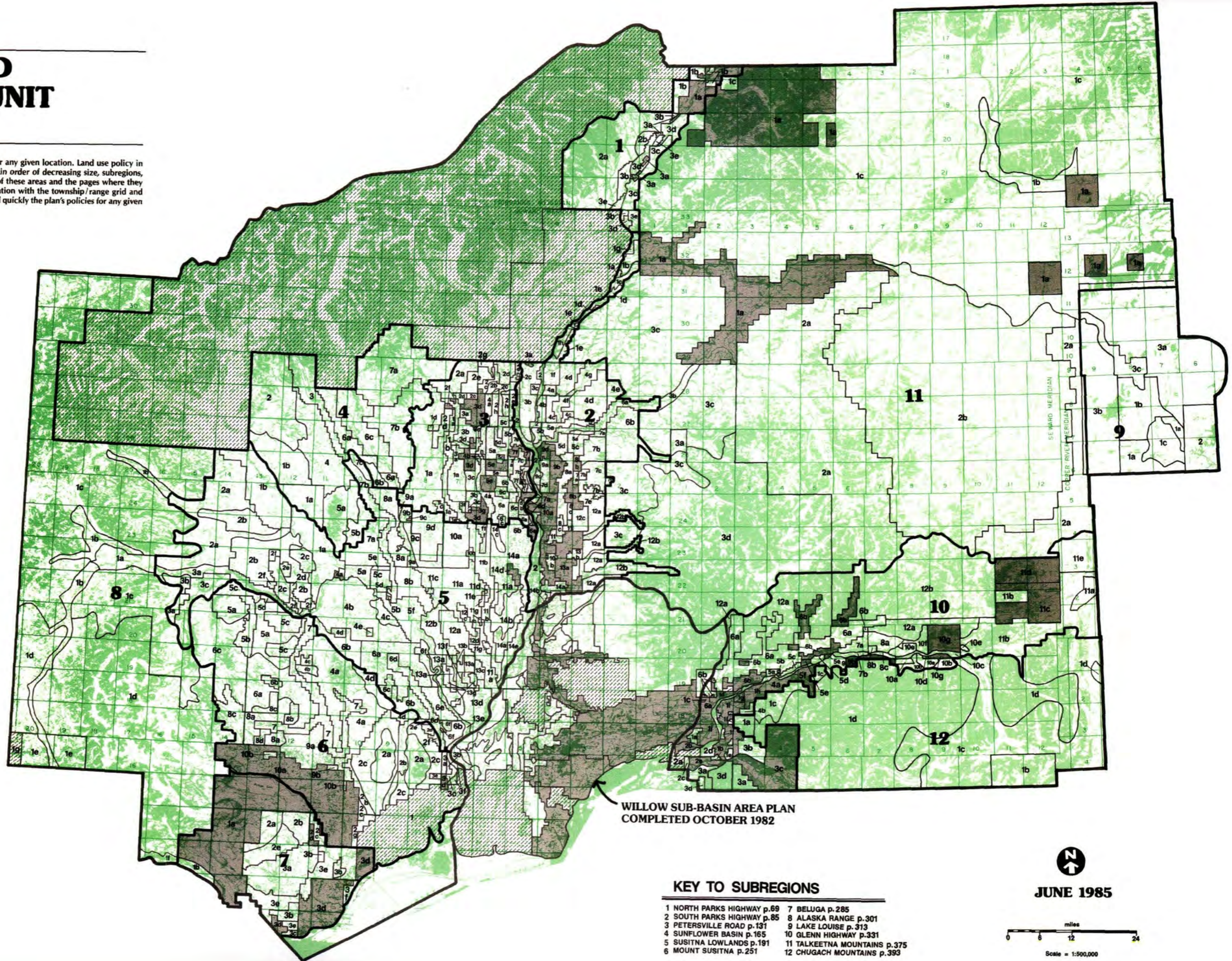
Susitna Area Plan

SUBREGION AND MANAGEMENT UNIT BOUNDARIES

This map is intended to make it easy to find the land use policy for any given location. Land use policy in the plan is organized into three geographic categories. These are, in order of decreasing size, subregions, management units, and subunits. This map shows the boundaries of these areas and the pages where they are discussed in the text of the plan. This information, in combination with the township/range grid and the topographic features also shown on the map, can be used to find quickly the plan's policies for any given location.

LEGEND

-  Areas Designated by the Legislature for Special Uses
-  Private, Native and University Lands
The plan does not regulate uses on these lands.



WILLOW SUB-BASIN AREA PLAN
COMPLETED OCTOBER 1982

KEY TO SUBREGIONS

- | | |
|----------------------------|------------------------------|
| 1 NORTH PARKS HIGHWAY p.69 | 7 BELUGA p.285 |
| 2 SOUTH PARKS HIGHWAY p.85 | 8 ALASKA RANGE p.301 |
| 3 PETERSVILLE ROAD p.131 | 9 LAKE LOUISE p.313 |
| 4 SUNFLOWER BASIN p.165 | 10 GLENN HIGHWAY p.331 |
| 5 SUSITNA LOWLANDS p.191 | 11 TALKEETNA MOUNTAINS p.375 |
| 6 MOUNT SUSITNA p.251 | 12 CHUGACH MOUNTAINS p.393 |



JUNE 1985



Scale = 1:500,000