

Map 7: Revised Management Unit 19: Hydaburg/ Cordova Bay (H)

The seaward planning boundary represents the approximate location of the state owned tide and submerged lands. All state tide and submerged lands within the boundary and not within a specific tideland unit are designated as General Use.

Boundary/Land Status

- Management Unit Boundary
- State Owned Upland
- State Selected Upland
- State Tideland Unit
- Tongass National Forest
- TNF Wilderness
- Native Owned
- Native Selected
- Other Private
- City Boundary

Resources and Facilities

- Anchorage
- Designated Aquatic Farm Site
- Herring Spawning Area
- Recreational Trail
- USFS Cabin
- Marine Access Point
- Highway/Paved Road
- Anadromous Streams

Units and Designations

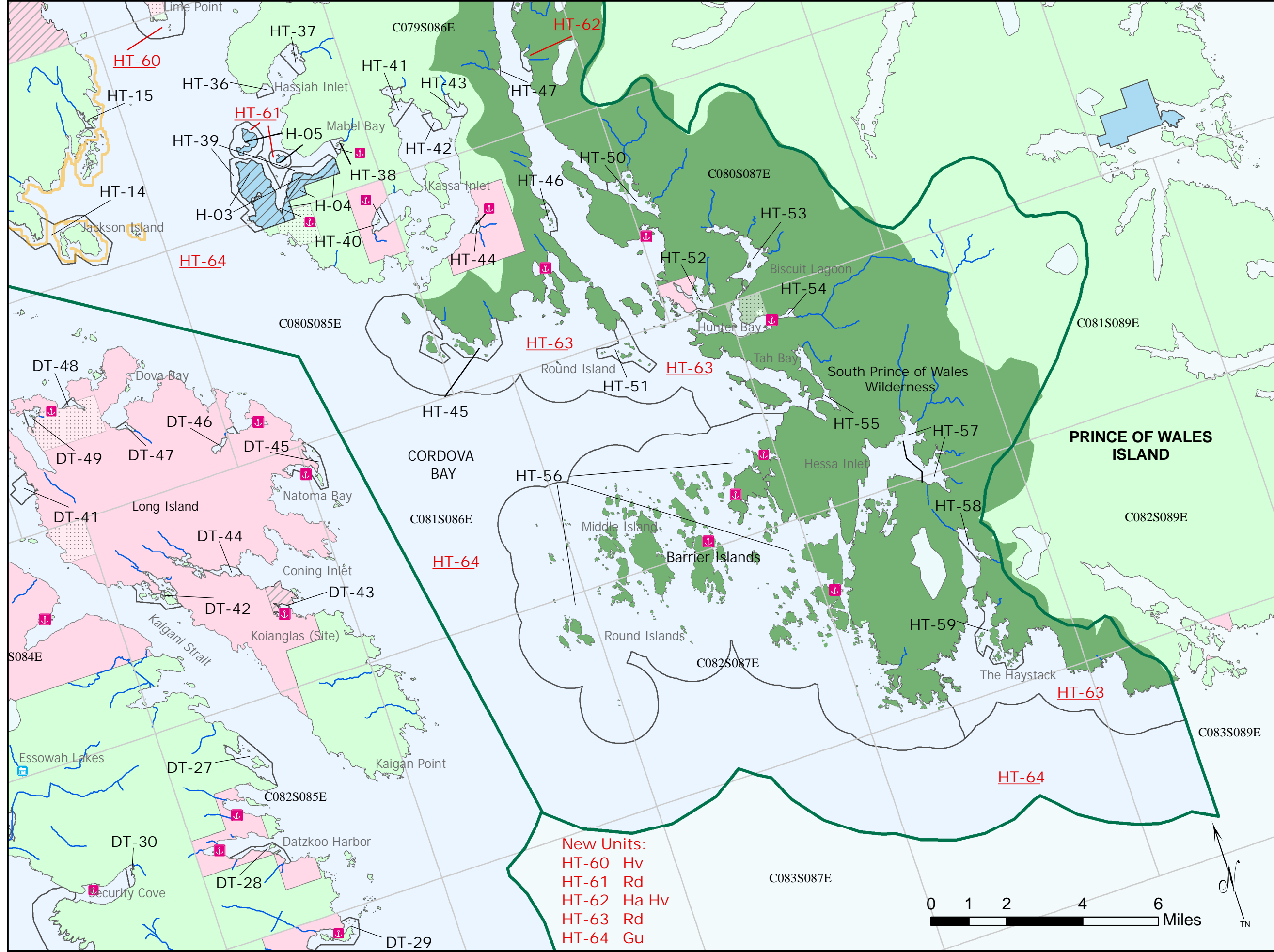
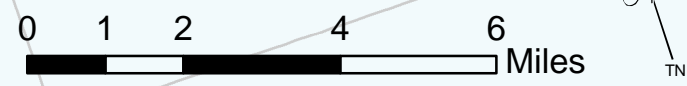
Upland Units:

H-03	Se
H-04	Gu
H-05	Rd

Tideland Units:

HT-14	Ha Hv	HT-50	Ha Hv
HT-15	Ha	HT-51	Ha Hv
HT-36	F	HT-52	Ha
HT-37	Ha Hv	HT-53	Ha Hv
HT-38	Ha Hv	HT-54	Ha
HT-39	Sd	HT-55	Ha
HT-40	Ha Hv	HT-56	Ha Hv
HT-41	Ha Hv	HT-57	Ha Hv
HT-42	F	HT-58	Ha Hv
HT-43	Ha Hv	HT-59	Ha Hv
HT-44	Ha Hv	HT-60	Hv
HT-45	Ha Hv	HT-61	Rd
HT-46	Ha Hv	HT-62	Ha Hv
HT-47	Ha	HT-63	Rd
		HT-64	Gu

New Units:
 HT-60 Hv
 HT-61 Rd
 HT-62 Ha Hv
 HT-63 Rd
 HT-64 Gu



This map provides a graphical representation of resources, ownership and facilities. This map is not intended for navigational purposes and ownership status is only to section level accuracy. Source documents remain the official record.