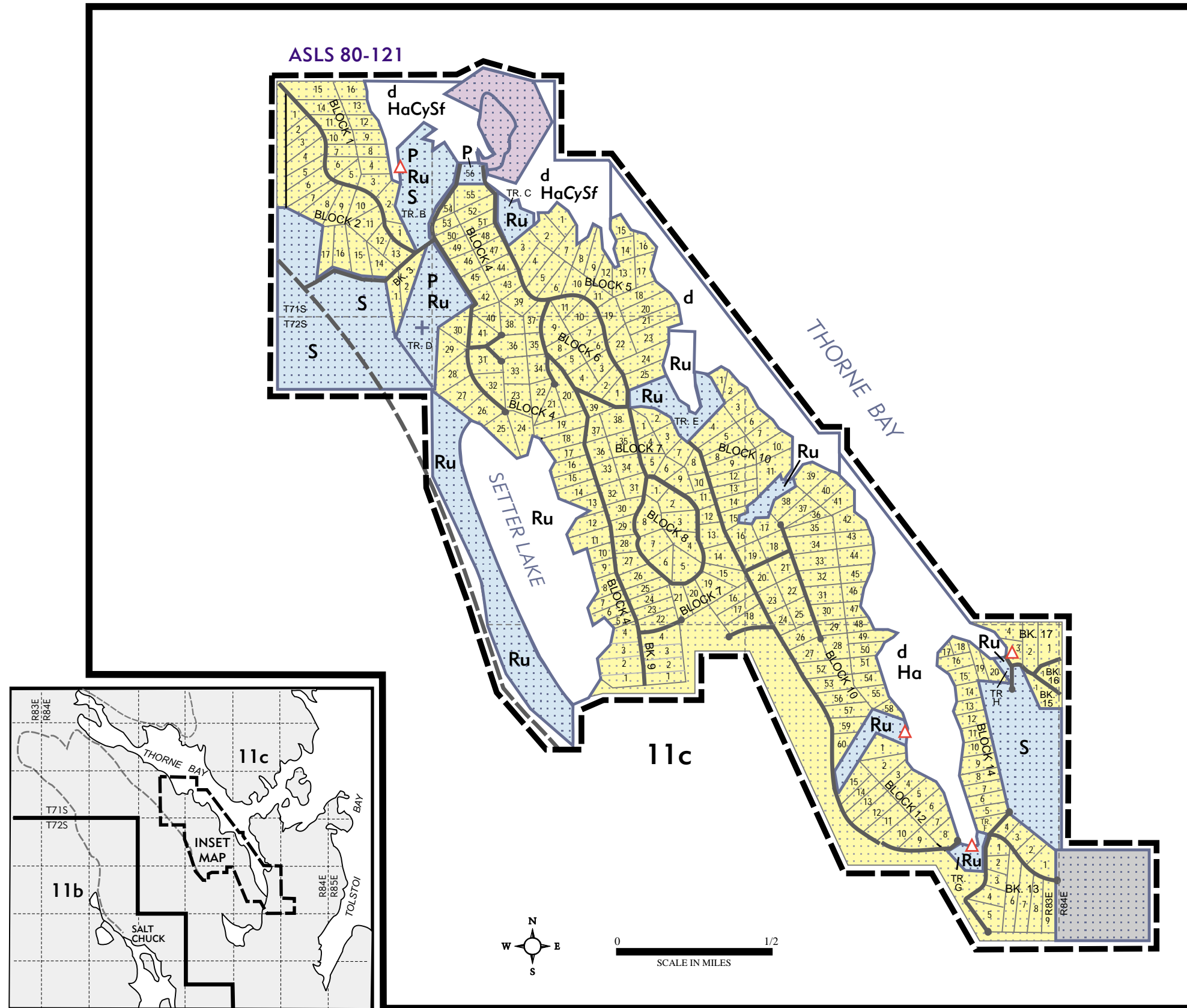



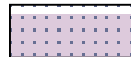


UNIT 11 - Thorne Bay

Subunit 11c - Setter Lake Inset Map





LAND STATUS

-  State - Patented or Tentative Approval
-  Private - including Native Allotments
-  Mental Health Trust Land
-  City/Municipal

MINERAL STATUS

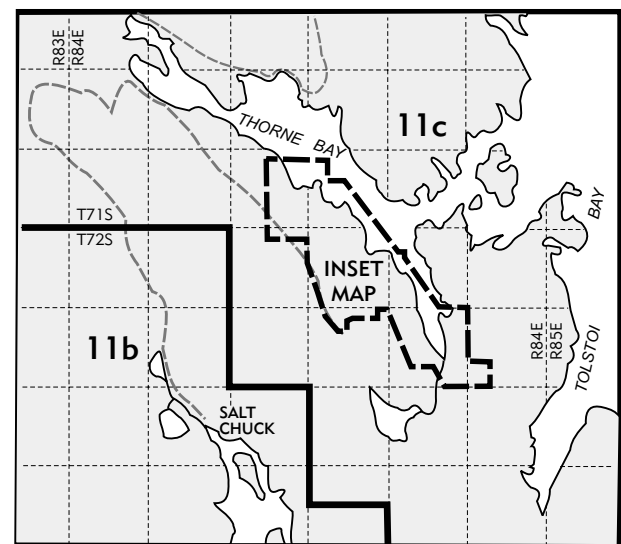
All lands within this map are closed to Mineral Entry.

SITE DESCRIPTION

-  Anadromous fish stream mouth
 -  Material site
- Additional specific resource information is available in the resource elements and the subunit narratives.*

DESIGNATIONS

- d Shoreline Development - Personal
- Ha Crucial Habitat
- Cy Important Community Harvest
- P Public Facilities
- Ru Public Recreation - Undeveloped
- S Settlement



Location Map

REV 5/16/00