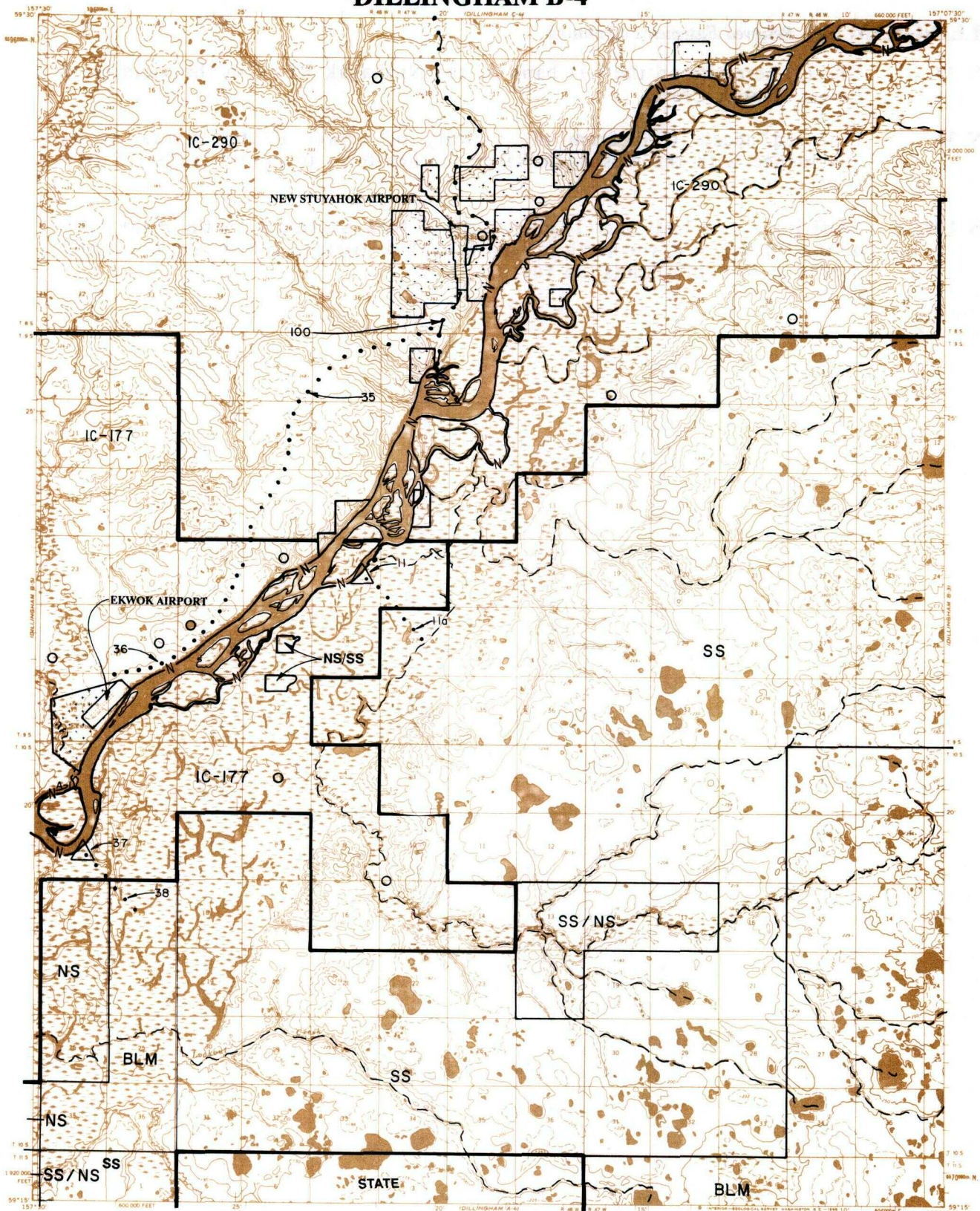
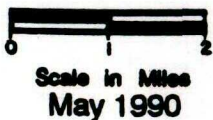


DILLINGHAM B-4



LEGEND

IC OR PAT. BDY.	N FED. DETERMINED NAVIGABLE	NATIONAL CONSERVATION UNIT BDY.
WATER EXCLUSION BDY.	SS STATE DETERMINED NAVIGABLE	PENDING NATIVE ALLOTMENT
NS NATIVE SELECTION	STATE SELECTION	NATIVE & STATE SELECTION
STATE STATE OWNED	AIR STRIP EASEMENT	CAMPSITE / PARKING EASEMENTS
PRIVATE LANDS	EXISTING TRAIL EASEMENT	ROAD EASEMENT
		PROPOSED TRAIL EASEMENT



RESERVED EASEMENTS

- EIN 11** One (1) acre site on the left bank of the Nushagak River five (5) miles above Ekwok.
- EIN 11a** Proposed access trail east of the Nushagak River five (5) miles above Ekwok southeasterly to public lands (25 foot trail).
- EIN 35** Existing winter access trail beginning three (3) miles north of Ekwok and continuing northerly through New Stuyahuk to public lands (25 foot trail limited to winter use).
- EIN 36** Existing winter access trail from Ekwok northeasterly continuing to Ekwok on trails (25 foot trail limited to winter use).

DILLINGHAM B-4 *Reserved Easements continued*

- EIN 37** One (1) acre site on the left bank of the Nushagak River in the vicinity of Lower Klutuk Creek.

- EIN 38** Proposed access trail from the vicinity of Lower Klutuk Creek at its confluence with the Nushagak River southeasterly to public lands (25 foot trail).

- EIN 100** Existing access trail one (1) mile south of New Stuyahok on the right bank of the Nushagak River north to New Stuyahok airstrip, continuing north and northeast to public lands (25 foot trail).