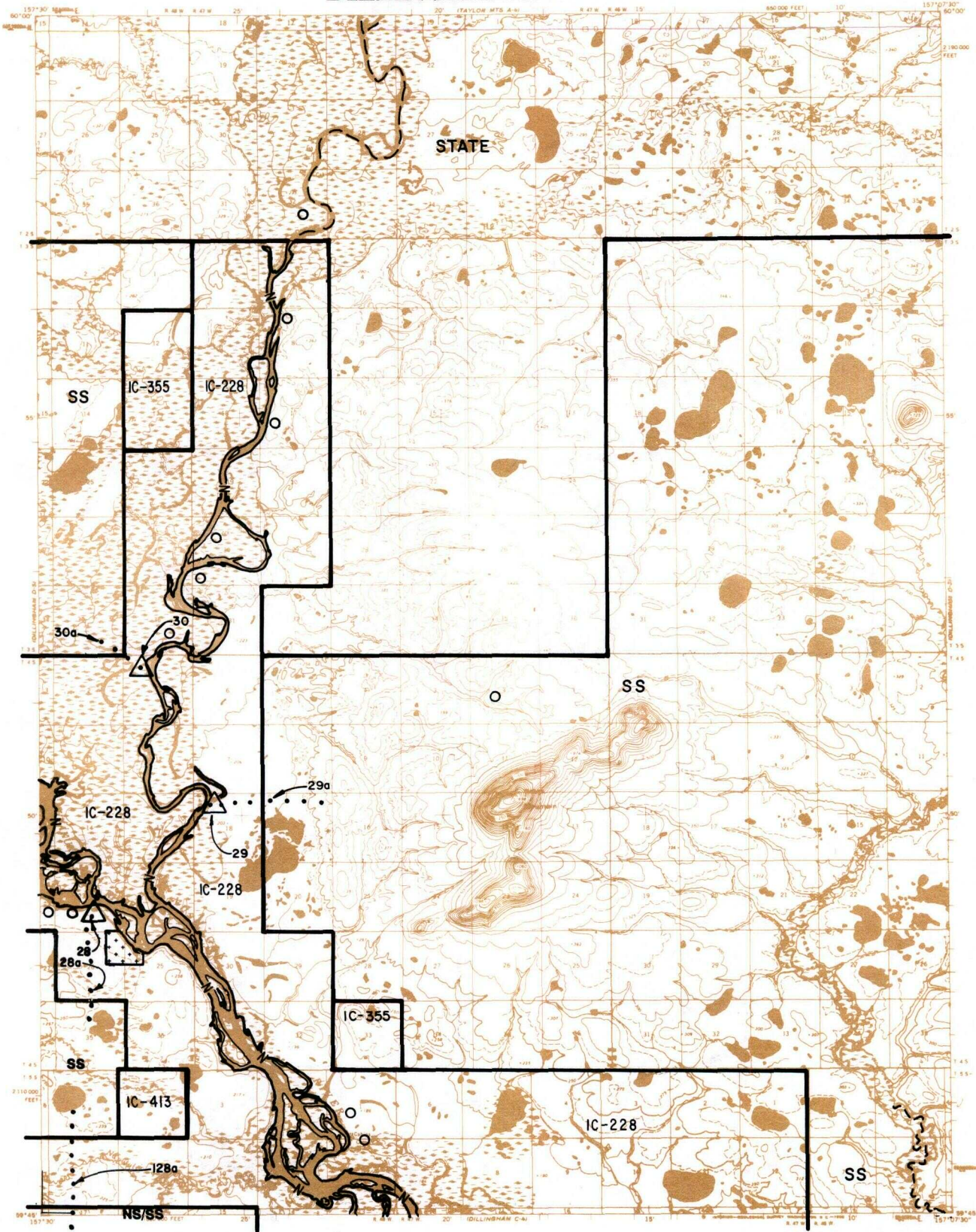


DILLINGHAM D-4



LEGEND

— IC OR PAT. BDY.	— N — FED. DETERMINED NAVIGABLE	— ● — NATIONAL CONSERVATION UNIT BDY.
— WATER EXCLUSION BDY.	- - - STATE DETERMINED NAVIGABLE	○ PENDING NATIVE ALLOTMENT
NS NATIVE SELECTION	SS STATE SELECTION	○ NS/SS NATIVE & STATE SELECTION
STATE STATE OWNED	⊕ AIR STRIP EASEMENT	△ CAMPSITE / PARKING EASEMENTS
++++ PRIVATE LANDS	●●●● EXISTING TRAIL EASEMENT	—●●●— ROAD EASEMENT
		●●●● PROPOSED TRAIL EASEMENT



RESERVED EASEMENTS

- EIN 28 One (1) acre site on the right bank of the Nuyakuk River.
- EIN 28a Proposed access trail from the Nuyakuk River southerly to public lands (25 foot trail).
- EIN 29 One (1) acre site on the left bank of the Nushagak River two miles above the Nuyakuk River.
- EIN 29a Access trail from the Nuyakuk River easterly to public lands (25 foot trail).
- EIN 30 One (1) acre site five (5) miles west of Ketok Mountain on the right bank of the Nushagak River two miles above the Nuyakuk River.
- EIN 30a Proposed access trail five (5) miles west of Ketok Mountain from the Nushagak River westerly to public lands (25 foot trail).
- EIN 128a Proposed access trail 7 miles west of Koliganek (25 foot trail).