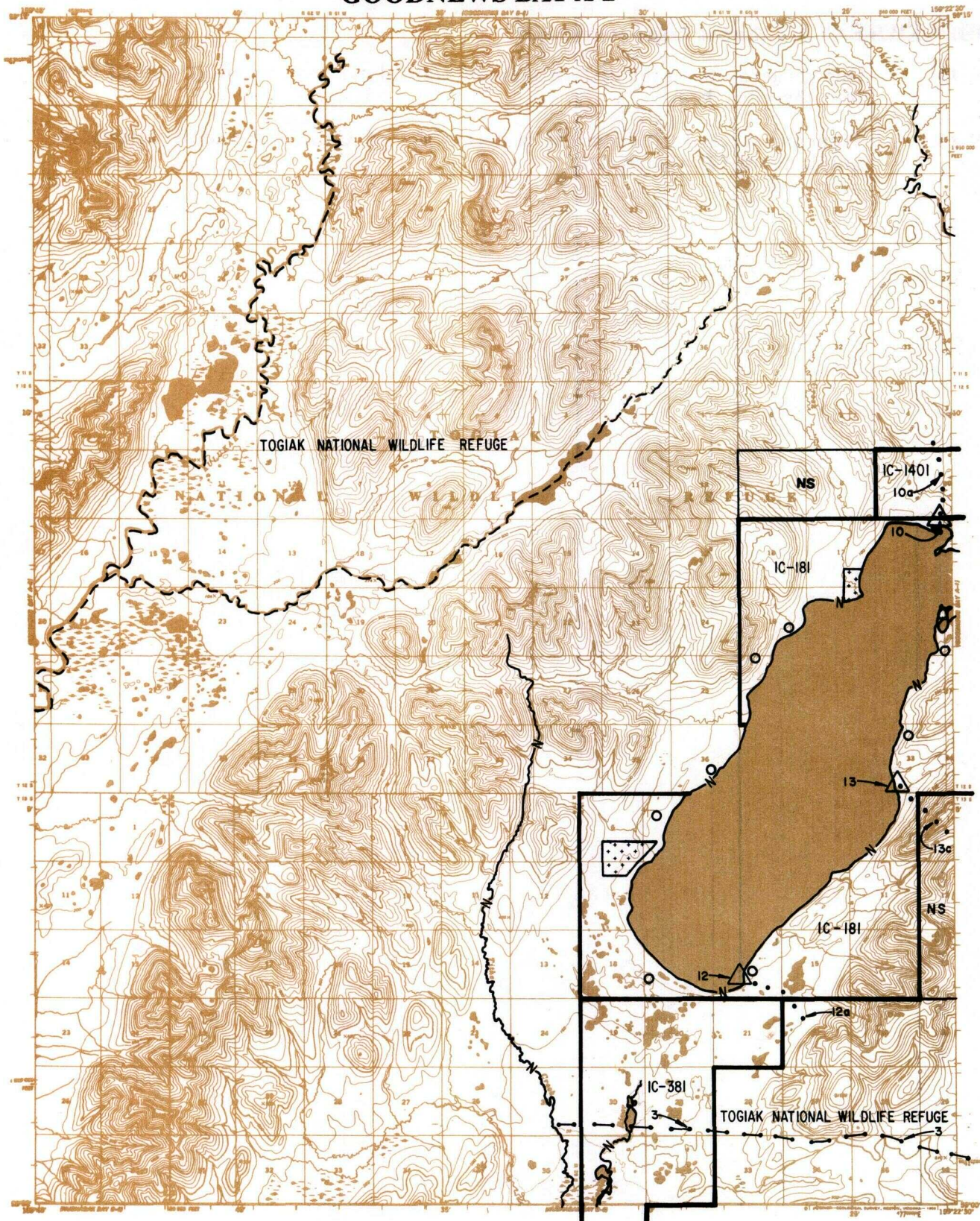


# GOODNEWS BAY A-2



## LEGEND

— IC OR PAT. BDY.	— N — FED. DETERMINED NAVIGABLE	— ● — NATIONAL CONSERVATION UNIT BDY.
— WATER EXCLUSION BDY.	- - - STATE DETERMINED NAVIGABLE	○ PENDING NATIVE ALLOTMENT
NS NATIVE SELECTION	SS STATE SELECTION	NS/SS NATIVE & STATE SELECTION
STATE STATE OWNED	⊕ AIR STRIP EASEMENT	△ CAMPSITE / PARKING EASEMENTS
++++ PRIVATE LANDS	— ● — EXISTING TRAIL EASEMENT	— ● — ROAD EASEMENT
		— ● — PROPOSED TRAIL EASEMENT



## RESERVED EASEMENTS

- EIN 3 Existing access trail from Dillingham westerly to Manokotak and Twin Hills (25 foot trail).
- EIN 10 One (1) acre site on the north bank of Ualik Lake with an additional 25 feet into the lake bed.
- EIN 10a Proposed access trail from the north bank of Ualik Lake northerly to public lands (25 foot trail).
- EIN 12 One (1) acre site on the south bank of Ualik Lake with an additional 25 feet into the lake bed.
- EIN 12a Proposed access trail from the south bank of Ualik Lake southerly to public lands (25 foot trail).

continued next page



**GOODNEWS BAY A-2 Reserved Easements continued**

**EIN 13** One (1) acre site on the eastern shore of Ualik Lake with an additional 25 feet into the river bed.

**EIN 13c** Proposed access trail from the eastern shore of Ualik Lake southeasterly to public lands (25 foot trail).



*[Faint, mirrored text from the reverse side of the page, including a table with columns for EIN numbers and descriptions.]*