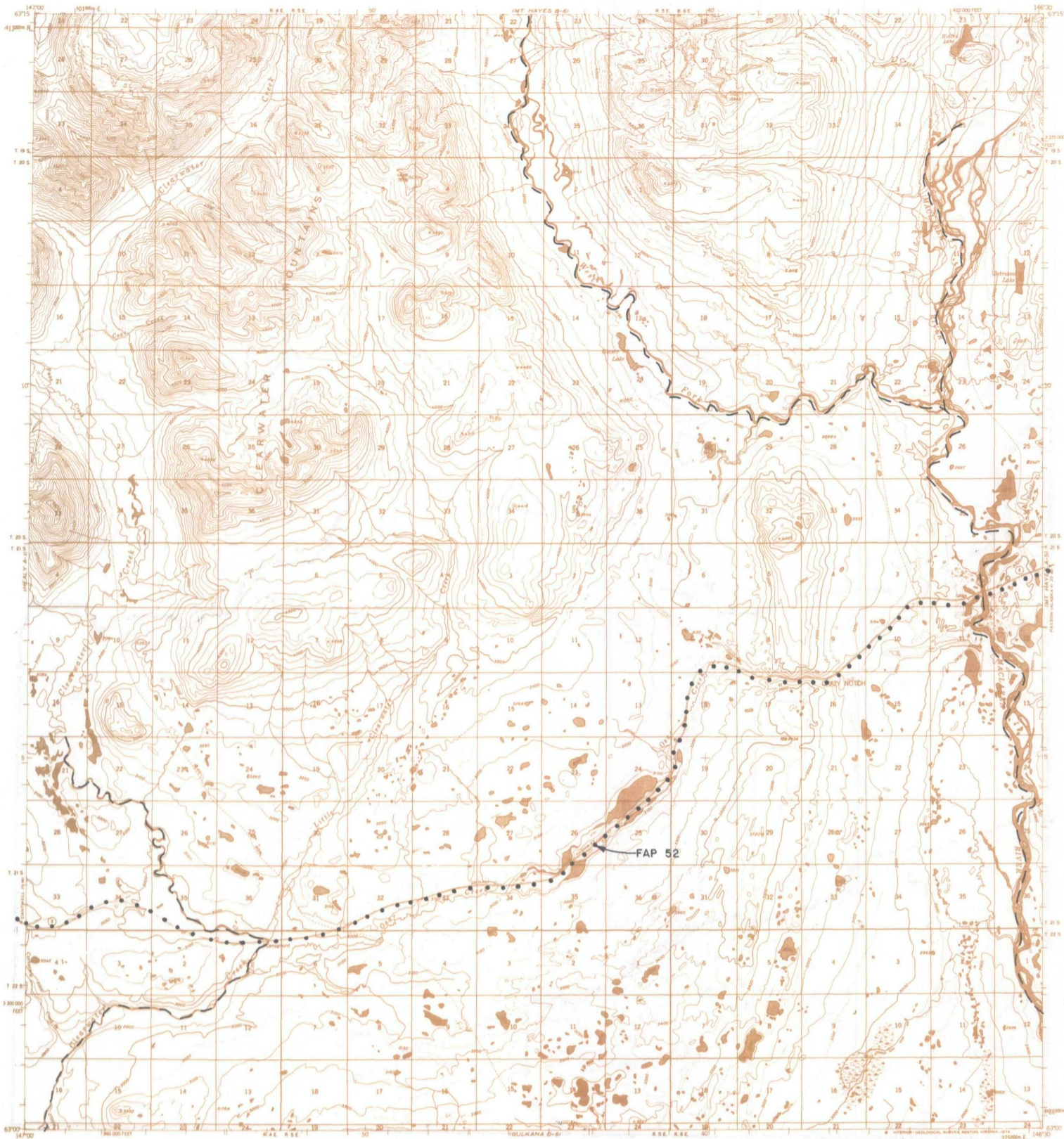
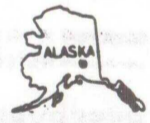


MT. HAYES A6



IC OR PATENT BDY.	FEDERALLY DETERMINED NAVIGABLE	OTHER AREA BDY.
WATER EXCLUSION BDY.	STATE DETERMINED NAVIGABLE	EASEMENTS & ACCESS ROUTES
RESERVED EASEMENTS		

0 1 2
SCALE IN MILES
June 1987



FAP 52 Omnibus Road easement extending 150 feet on each side of the centerline of the Denali Highway.