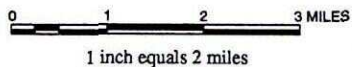
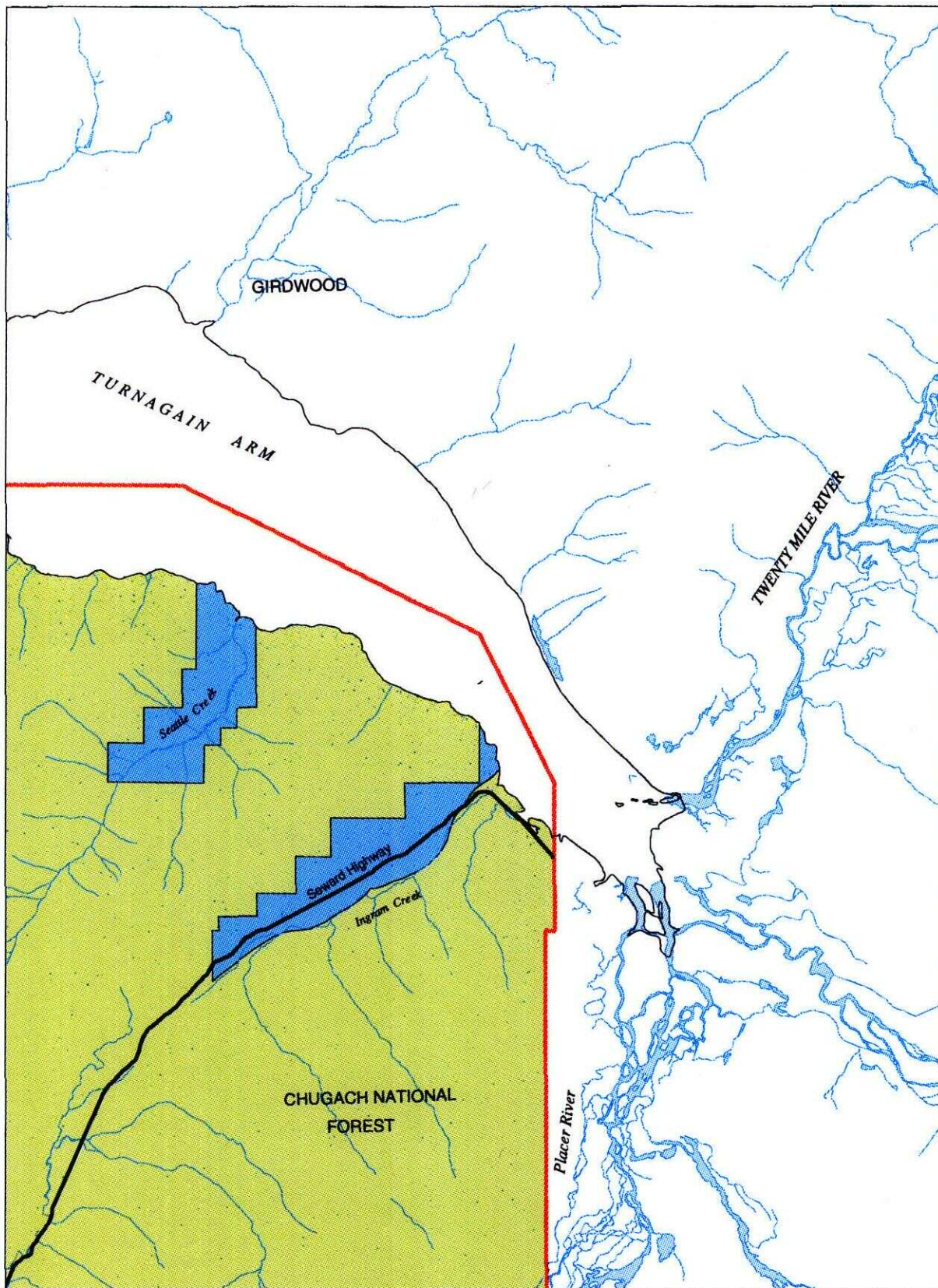


SEWARD D-6

■ RESERVED EASEMENTS

No Easements Reserved



KENAI EASEMENT ATLAS

1993

LAND OWNERSHIP

- Federal
- Private - Includes Mental Health, University of Alaska, Alaska Railroad & Native Allotments
- State
- Borough & Municipal
- ANSCA Corporation
- State Determined Navigable Water
- Federal Determined Navigable Water

ROADS & TRAILS

- State-Maintained Roads
- Improved Roads
- 4WD Trails
- ATV Trails
- Snowmachine Trails
- Horse Trails
- Foot Trails
- Alaska Railroad

MISC

- Atlas Boundary

SITES

- Canoe Launch
- Skiff Launch
- Campsite
- Parking Area
- Picnic Area
- Landing Strip
- Public Cabin
- Visitor Information