

# TRINITY ISLANDS D-1

---

## ◆ RESERVED EASEMENTS:

*No Easements Reserved*

## SUPPLEMENTAL LEGEND (keyed to bold numbers on USGS Quad Trinity Islands D-1)

Land north and east of Olga Bay will be conveyed to the USF&WS in fee

**1** no later than October 1, 1997

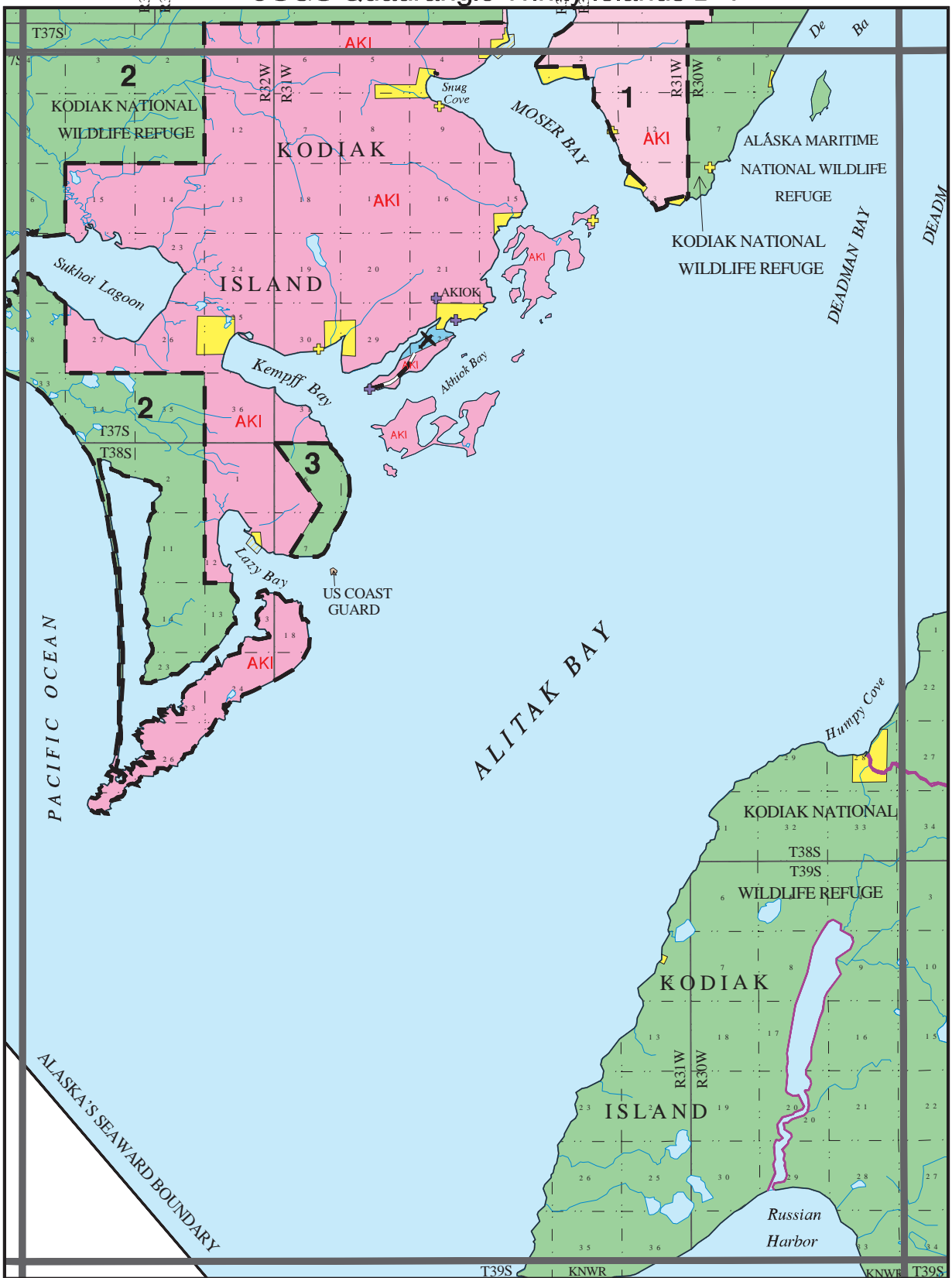
Land south and west of Olga Bay will become “native, public access by permit only”

**2** no later than October 1, 1997

**3** land will be conveyed to AKI in fee no later than October 1, 1997

Land shown as “Native, public access by permit only” is available for public use with a land use permit. A land use permit is available for non-commercial sport fishing, hunting and other recreational uses. The land use permit may be obtained from Akhiok-Kaguyak, Inc. Permits require payment of a reasonable fee. Contact the corporation for further information. Legal access provided by FD 137-22 thru 226.

# USGS Quadrangle Trinity Islands D-1



## - KODIAK PUBLIC ACCESS ATLAS LEGEND -

- |                                      |  |                |                |                                    |
|--------------------------------------|--|----------------|----------------|------------------------------------|
| State                                | Mental Health                            | Highway        | Campsite       | Wheel Strip                        |
| Native                               | University                               | Roads          | Public Cabin   | Beach Strip                        |
| Native, public access by permit only | Private                                  | Trails         | Boat Launch    | Floatplane                         |
| USF&WS                               | Private Tideland                         | Winter Trails  | Dock           | State Determined Navigable Water   |
| Katmai Natl Park                     | Municipal Tideland                       | Atlas Boundary | Visitor Center | Federal Determined Navigable Water |
| Other Federal                        | Alaska State Park                        | USGS Quad      | Picnic Site    |                                    |
| Military                             | Critical Habitat Area                    |                |                |                                    |
| Municipal                            | Small Parcel - color indicates ownership |                |                |                                    |

March, 1997