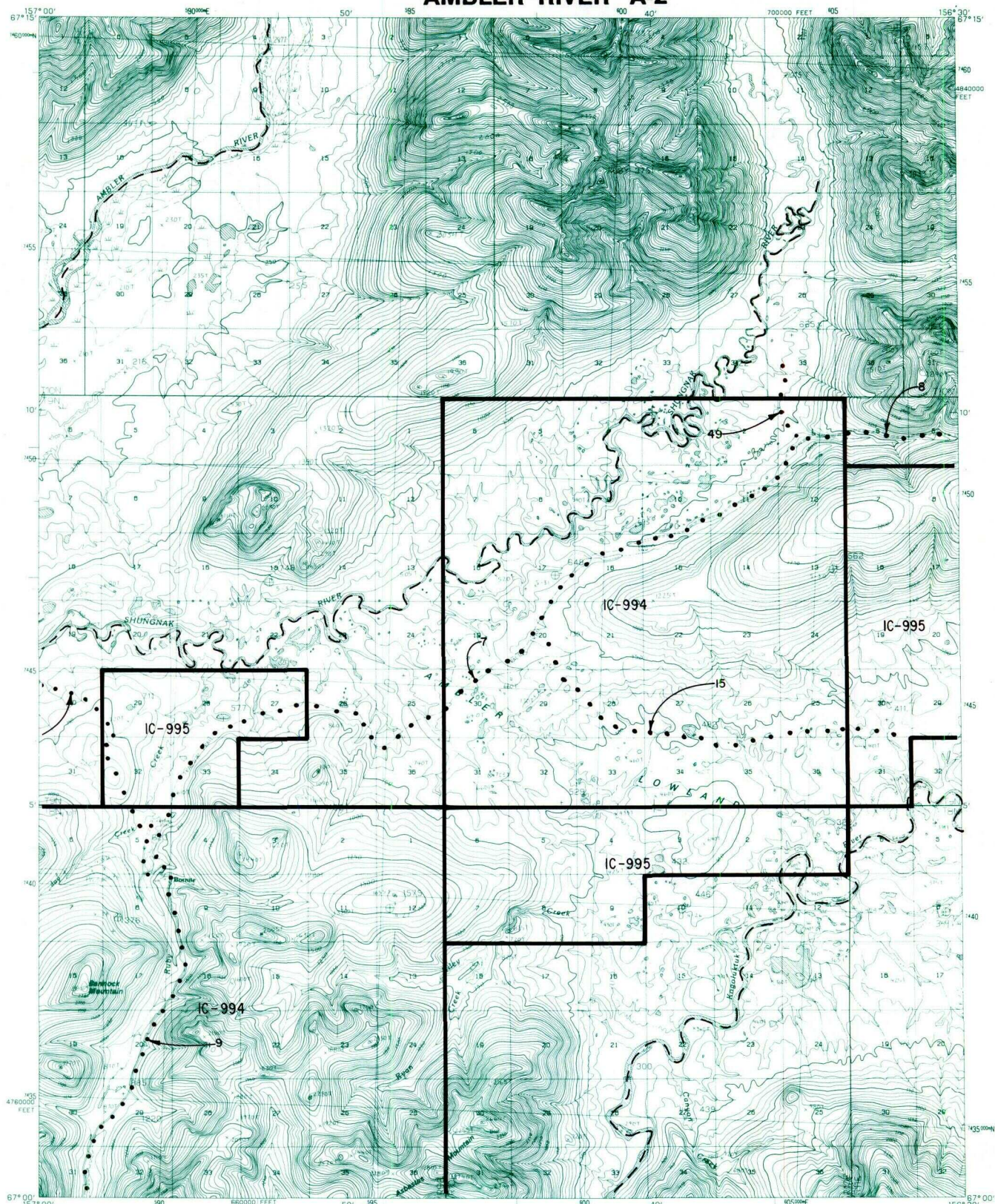


AMBLER RIVER A-2



- IC OR PATENT BDY.
- N FEDERALLY DETERMINED NAVIGABLE
- NATIONAL PRESERVE LAND BDY.
- WATER EXCLUSION BDY.
- STATE DETERMINED NAVIGABLE
- EASEMENTS & ACCESS ROUTES



RESERVED EASEMENTS

- EIN 6** An easement for an access trail fifty (50) feet in width from EIN 9 (Bornite Road) in Section 5, T. 19 N., R. 9 E., K.R.M., northwesterly to public land. The winter uses allowed are those listed for a fifty (50) foot wide trail easement. The summer uses allowed are those listed for a twenty-five (25) foot wide trail easement.
- EIN 7** An easement fifty (50) feet in width for an access trail from EIN 8 in Section 15, T. 20 N., R. 10 E., K.R.M., southwesterly crossing a block of isolated public land to EIN 9 in Section 5, T. 19 N., R. 9 E., K.R.M. The winter uses allowed are those listed for a fifty (50) foot wide trail easement. The summer uses allowed are those listed for a twenty-five (25) foot wide trail easement.
- EIN 8** An easement sixty (60) feet in width for a road from EIN 7 in Section 15, T. 20 N., R. 10 E., K.R.M., northeasterly to public land.
- EIN 9** An easement sixty (60) feet in width for a road from the Kobuk River in Section 32, T. 18 N., R. 9 E., K.R.M., northerly to Bornite and connecting with trails EIN 6 C5 and EIN 7 and continue to public land.
- EIN 15** An easement for an access trail twenty-five (25) feet in width from the trail EIN 7 in Section 20, T. 20 N., R. 10 E., K.R.M., easterly to public land.