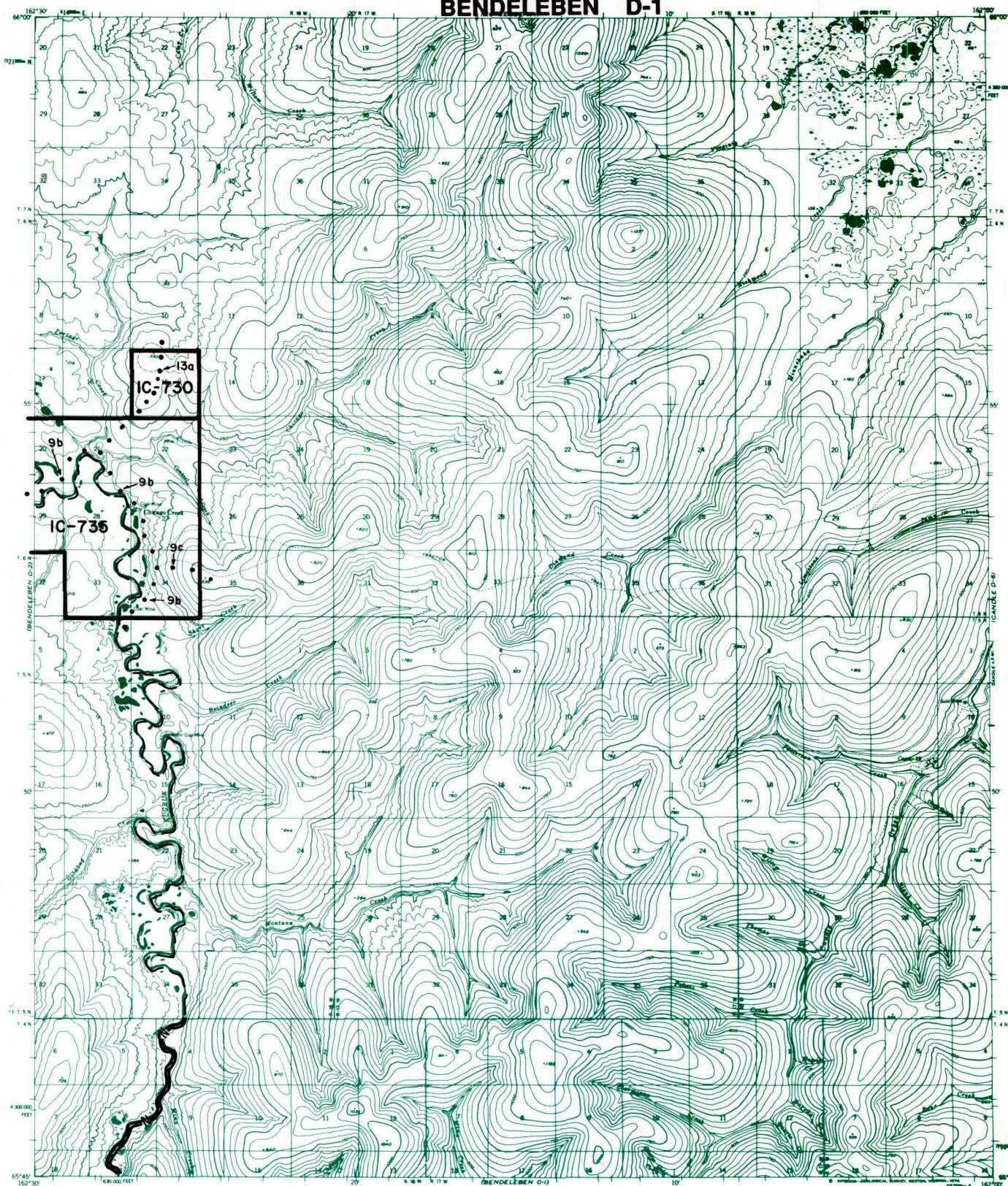


BENDELEBEN D-1



IC OR PATENT BDY.
 FEDERALLY DETERMINED NAVIGABLE
 NATIONAL PRESERVE LAND BDY.
 STATE DETERMINED NAVIGABLE
 EASEMENTS & ACCESS ROUTES

Scale in Mile
 May 1988

RESERVED EASEMENTS

- EIN 9b** An easement, fifty (50) feet in width, for an trail from FAS Route 1510 (Deering-Inmachuk Road), in Section 24, T. 6 N., R. 21 W., K.R.M., easterly to the junction with trail EIN 13a, thence continuing southeasterly to the junction with trail EIN 9c, thence southwesterly to public land. Large all-terrain vehicles greater than 3,000 lbs. Gross Vehicle Weight (GVW), track vehicles, and four-wheel drive vehicles are limited to winter use.
- EIN 9c** An easement for an access trail, fifty (50) feet in width, from the junction with EIN 9b in Section 34, T. 6 N., R. 18 W., K.R.M., easterly to public land.
- EIN 13a** An easement for an access trail, twenty-five (25) feet in width, from the west side of Ninemile Point in Section 33, T. 8 N., R. 18 W., K.R.M., southerly to a junction with trail EIN 9b in Section 21, T. 6 N., R. 18 W., K.R.M.