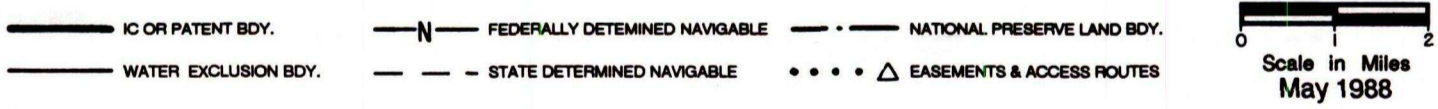
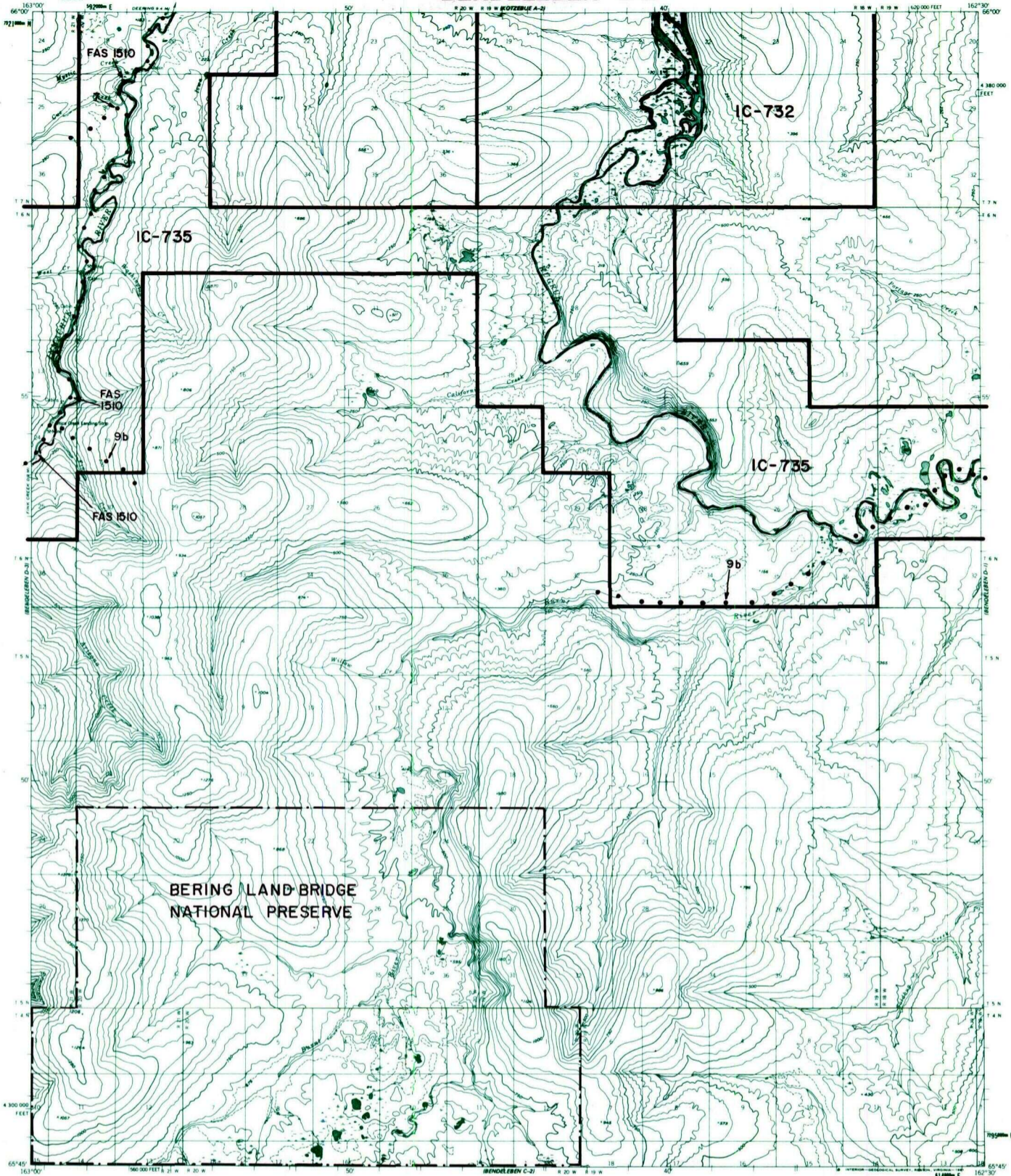


BENDELEBEN D-2



RESERVED EASEMENTS

- EIN 7** An easement for an access trail, twenty-five (25) feet in width, from Cue Creek in Section 30, T. 7 N., R. 20 W., K.R.M., southwesterly from FAS Route 1510 (Deering-Inmachuk Road) to public land in Section 36, T. 7 N., R. 21 W., K.R.M.
- EIN 9b** An easement, fifty (50) feet in width, for an access trail from FAS Route 1510 (Deering-Inmachuk Road), in Section 24, T. 6 N., R. 21 W., K.R.M., easterly to the junction with trail EIN 13a, thence continuing southeasterly to the junction with trail EIN 9c, (see Bendelben D-1 quad) thence southwesterly to public land. Large all-terrain vehicles greater than 3,000 lbs. Gross Vehicle Weight (GVW), track vehicles, and four-wheel drive vehicles are limited to winter use.
- FAS 1510** Omnibus Road easement extending 50 feet on each side of the centerline of the Deering-Inmachuk Road from Deering airstrip southwest along Inmachuk River to the Fink Creek mining area.