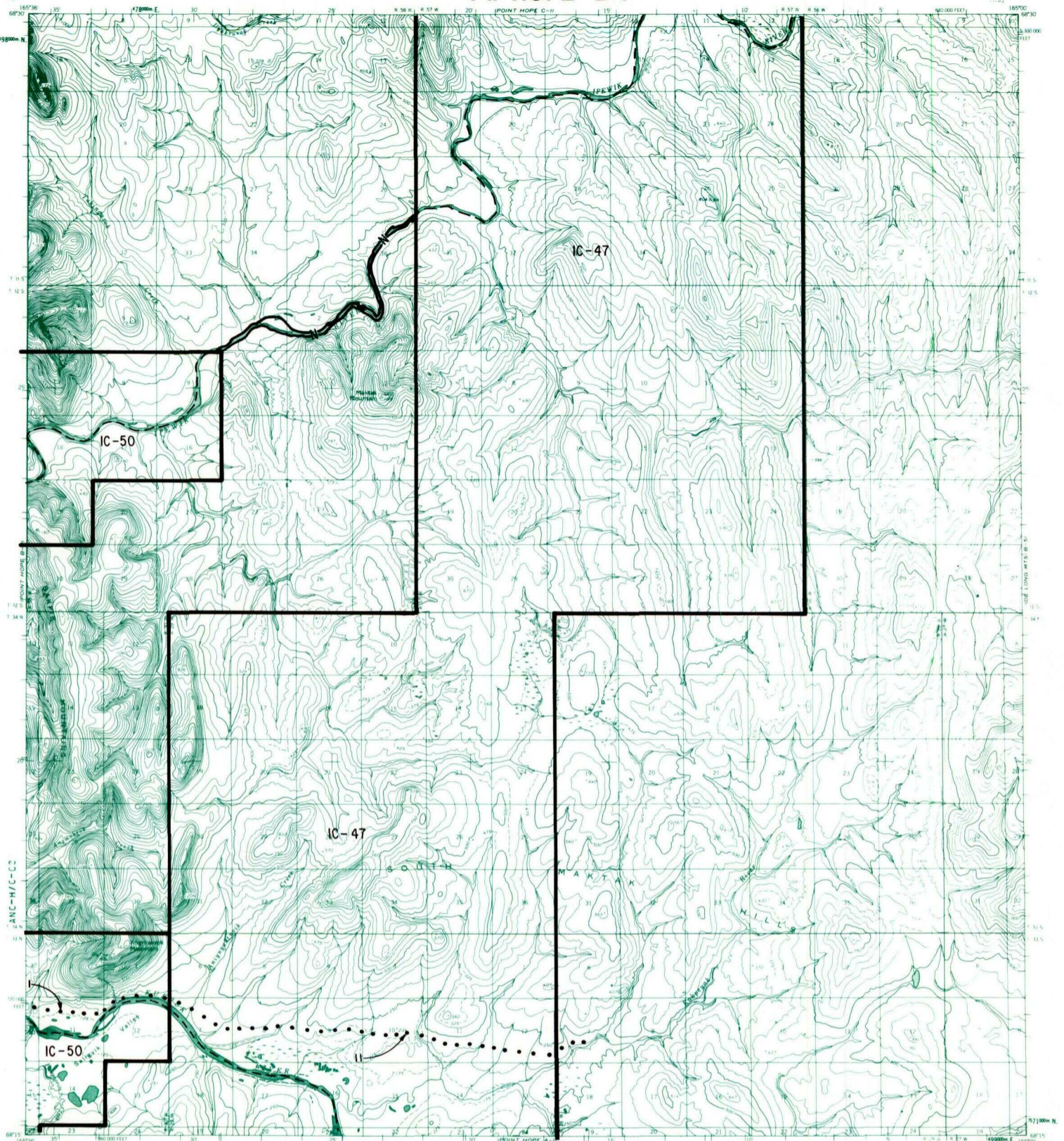
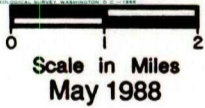


Pt. HOPE B-1



- IC OR PATENT BDY.
- WATER EXCLUSION BDY.
- N FEDERALLY DETERMINED NAVIGABLE
- STATE DETERMINED NAVIGABLE
- . - . - . NATIONAL PRESERVE LAND BDY.
- • • • • EASEMENTS & ACCESS ROUTES



**RESERVED EASEMENTS**

- EIN 1** A road easement one hundred (100) feet in width for access to and from public land. The easement extends from Point Hope easterly along the coast south of Marryat Inlet, then northeasterly to the Kukukuk River area where one branch crosses the Kukukuk River and goes north across the left bank (looking downstream) of the Kukukuk River and connects with EIN 11 which goes to public land.
- EIN 11** A road easement one hundred (100) feet in width for use by the public to gain access from Point Hope EIN 1 to public land in the Upper Kukukuk River area.