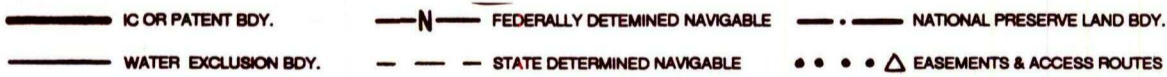
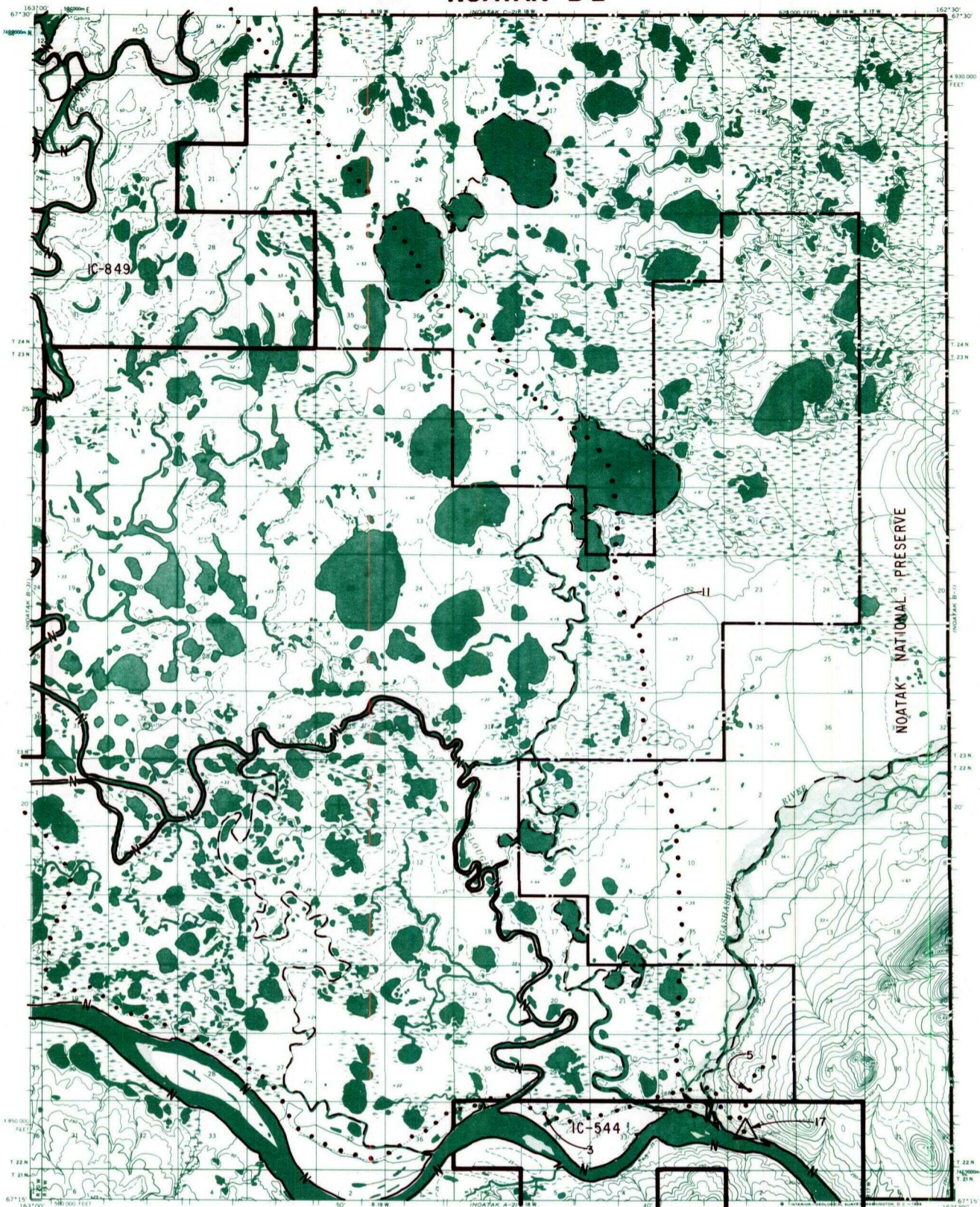


NOATAK B-2



RESERVED EASEMENTS

- EIN 11** An easement twenty-five (25) feet in width for an access trail beginning at trail EIN 13 on the right bank (looking downstream) of the Noatak River in Section 9, T. 25 N., R. 19 W., K.R.M., southeasterly to public land. The season of use is limited to winter.
- EIN 3** An easement twenty-five (25) feet in width for a winter access trail from Kotzebue, northerly across Hotham Inlet, generally following the Noatak River, to Noatak. The season of use is limited to winter.
- EIN 5** An easement twenty-five (25) feet in width for an access trail near the mouth of the Agashashok River, in Section 35, T. 22 N., R. 18 W., K.R.M., northeasterly to public land. The season of use is limited to summer.
- EIN 17** A one (1) acre site easement upland of the ordinary high water mark in Section 35, T. 22 N., R. 18 W., K.R.M., on the left bank (looking downstream) of the Noatak River.