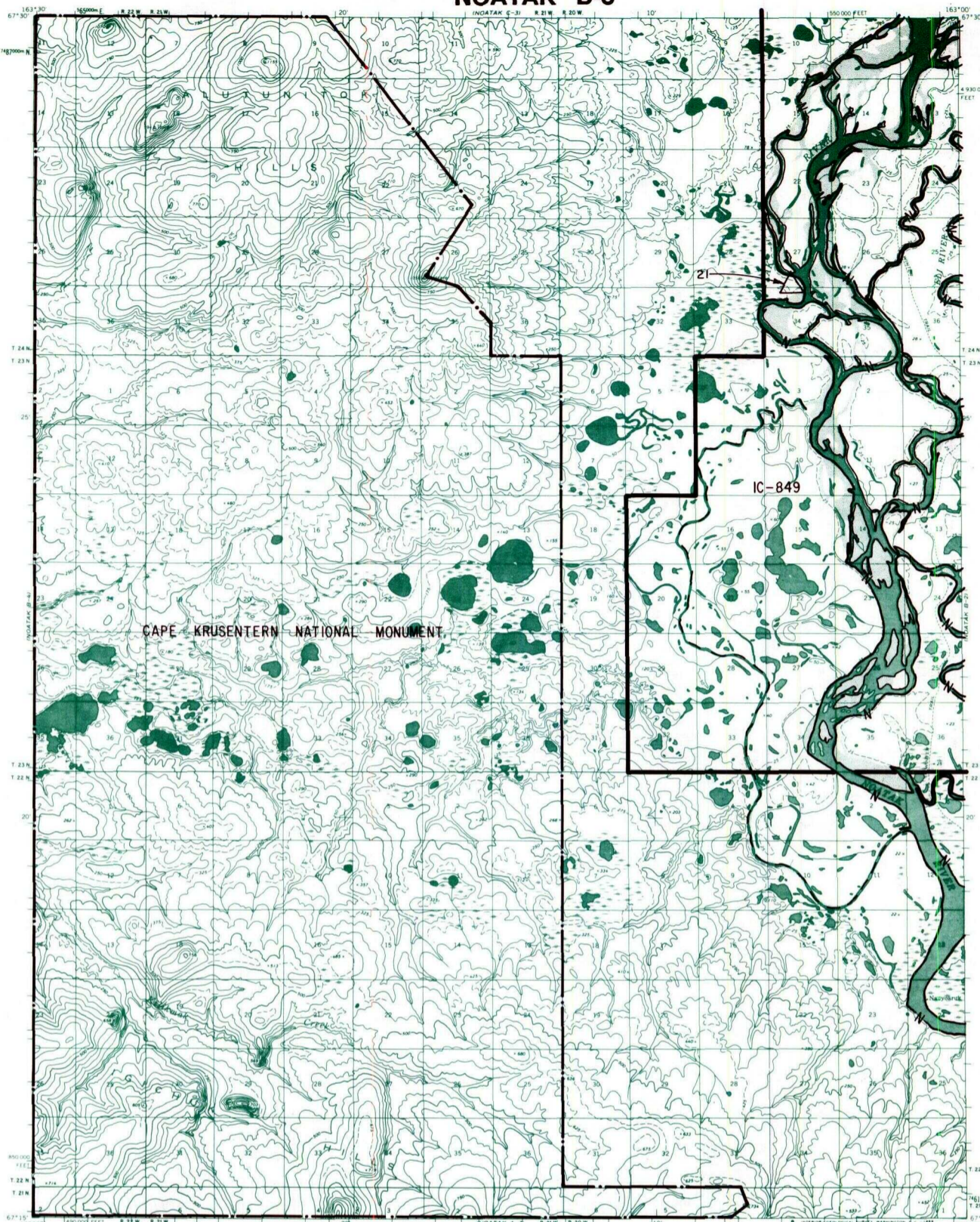
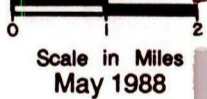


**NOATAK B-3**



- IC OR PATENT BDY.
- N — FEDERALLY DETERMINED NAVIGABLE
- . — NATIONAL PRESERVE LAND BDY.
- WATER EXCLUSION BDY.
- - - STATE DETERMINED NAVIGABLE
- • • Δ EASEMENTS & ACCESS ROUTES



**RESERVED EASEMENTS**

**EIN 21** A one (1) acre site easement upland of the ordinary high water mark on the right bank (looking downstream) of the Noatak River in Sections 27 and 34, T. 24 N., R. 20 W., K.R.M.