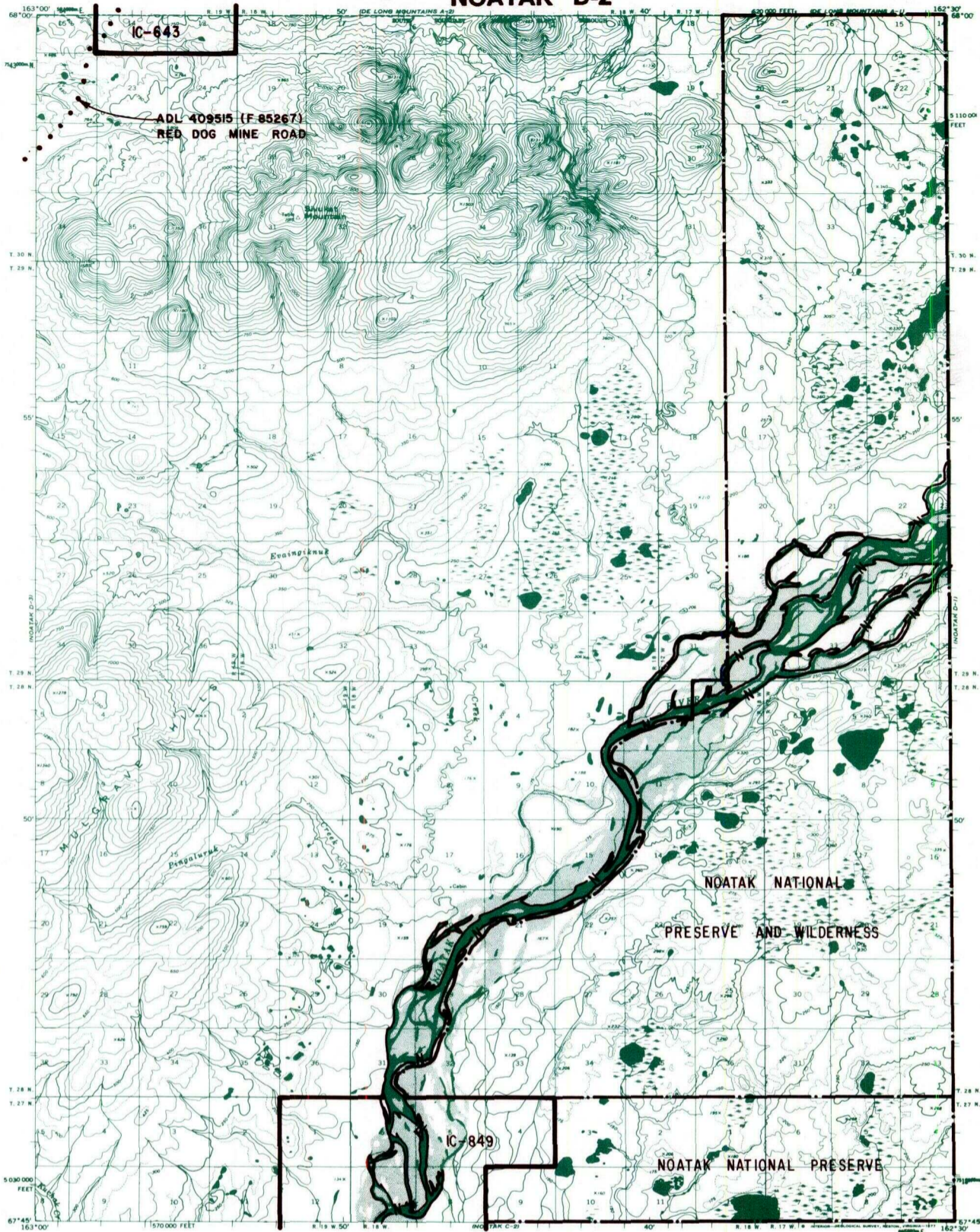


NOATAK D-2



- IC OR PATENT BDY.
- N — FEDERALLY DETERMINED NAVIGABLE
- . . . NATIONAL PRESERVE LAND BDY.
- WATER EXCLUSION BDY.
- - - STATE DETERMINED NAVIGABLE
- • • Δ EASEMENTS & ACCESS ROUTES

Scale in Miles
 May 1988

RESERVED EASEMENTS

ADL 409515 (F 85267) Public right-of-way for transportation corridor and 250 foot wide access roads to material sites; right-of-way is 600 feet in width from the Chukchi Sea, T. 25 N., R. 24 W., K.R.M., northeasterly to the Red Dog Mine.