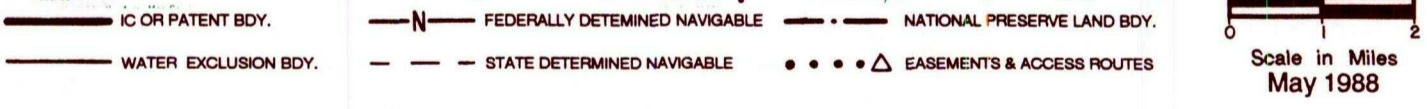
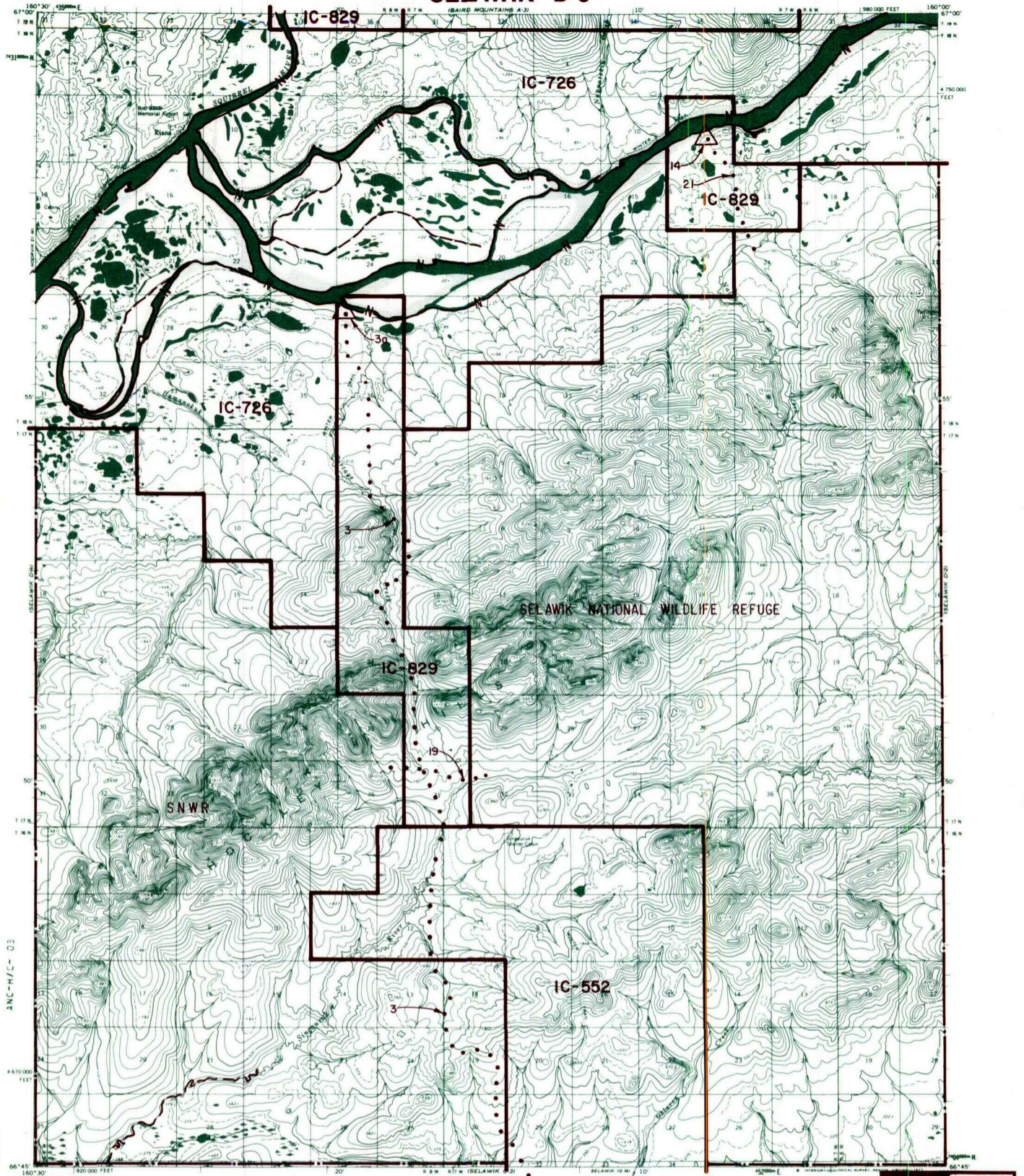


SELAWIK D-3



RESERVED EASEMENTS

- EIN 3** An easement twenty-five (25) feet in width for an access trail from site EIN 3a in Section 25, T. 18 N., R. 8 W., K.R.M., southerly to public land.
- EIN 3a** A one-quarter (1/4) acre site upland of the ordinary high water mark in Section 25, T. 18 N., R. 8 W., K.R.M., on the left bank (looking downstream) of the Kobuk River. The uses allowed are limited to vehicle parking (e.g., aircraft, boats, ATV's, snowmobiles, cars, trucks) and loading or unloading.
- EIN 14** A one (1) acre site easement upland of the ordinary high water mark in Section 11, T. 18 N., R. 7 W., K.R.M., on the left bank (looking downstream) of the Kobuk River.
- EIN 19** An easement twenty-five (25) feet in width for an access trail from trail EIN 3 in Section 31, T. 17 N., R. 7 W., K.R.M., proceeding easterly to public land in T. 17 N., R. 7 W., K.R.M., and westerly to public land in T. 17 N., R. 8 W., K.R.M.
- EIN 21** An easement twenty-five (25) feet in width for an access trail from the Kobuk River, Section 11, T. 18 N., R. 7 W., K.R.M., southerly to public land.