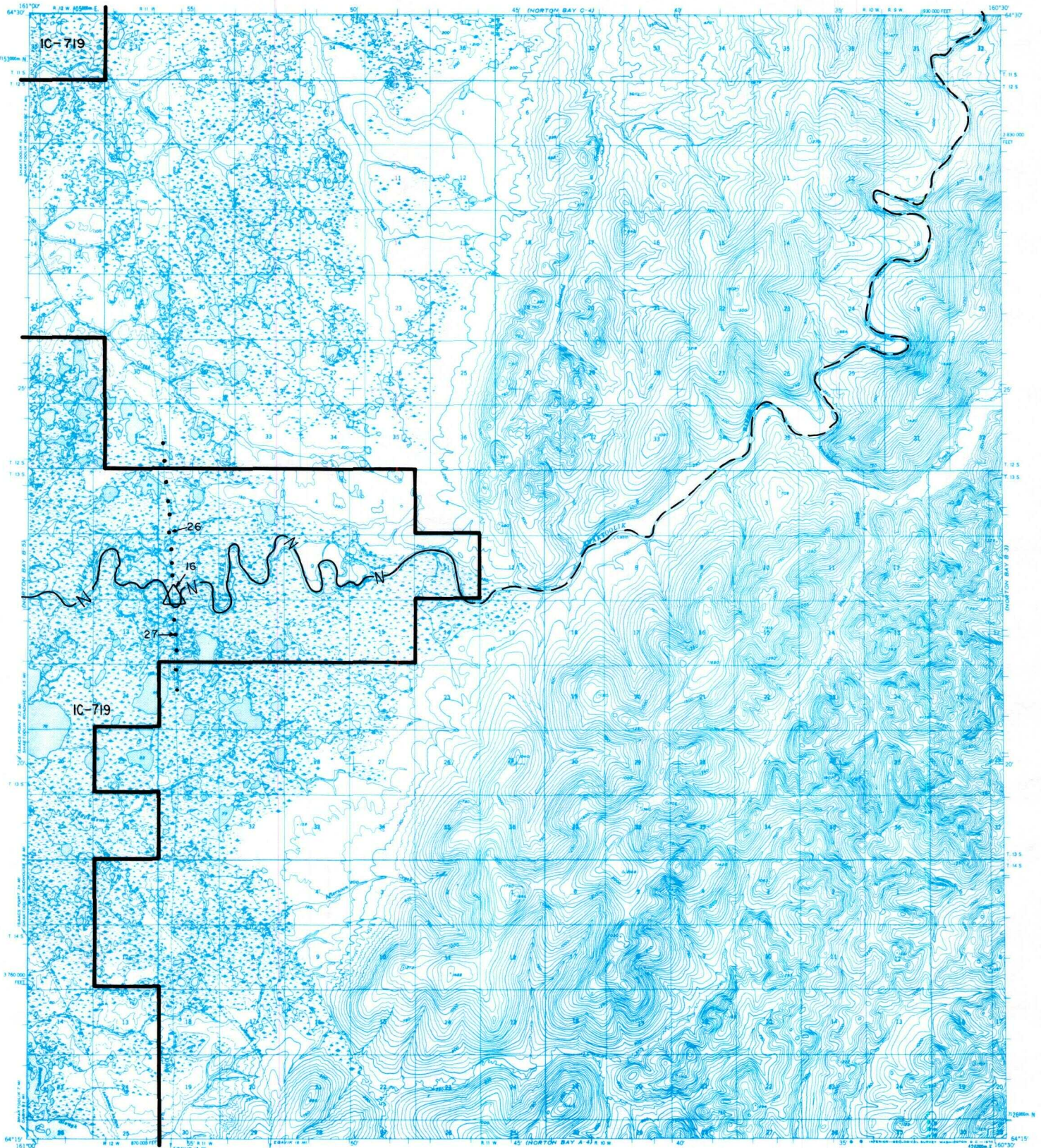


# NORTON BAY B-4



IC OR PATENT BDY.
  N FED. DETERMINED NAVIGABLE
  NATIONAL PRESERVE LAND BDY.
  EASEMENTS & ACCESS ROUTES



Scale in Miles

May 1989

## RESERVED EASEMENTS

- EIN 16** A one (1) acre site easement, upland of the ordinary high water mark in Section 7, T. 13 S., R. 11 W., K.R.M., on the right bank (looking downstream) of the Shaktoolik River.
- EIN 26** An easement for an access trail, twenty-five (25) feet in width, from site EIN 16 in Section 7, T. 13 S., R. 11 W., K.R.M., northerly to public land.
- EIN 27** An easement for an access trail, twenty-five (25) feet in width, from site EIN 16 in Section 7, T. 13 S., R. 11 W., K.R.M., southerly to public land.