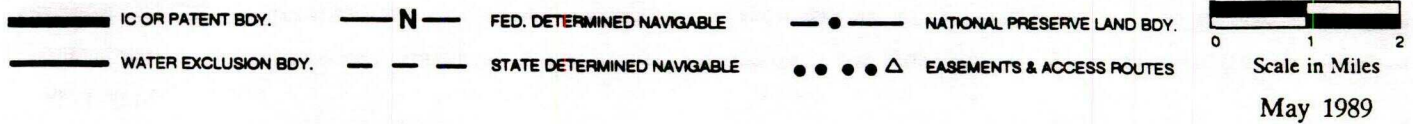
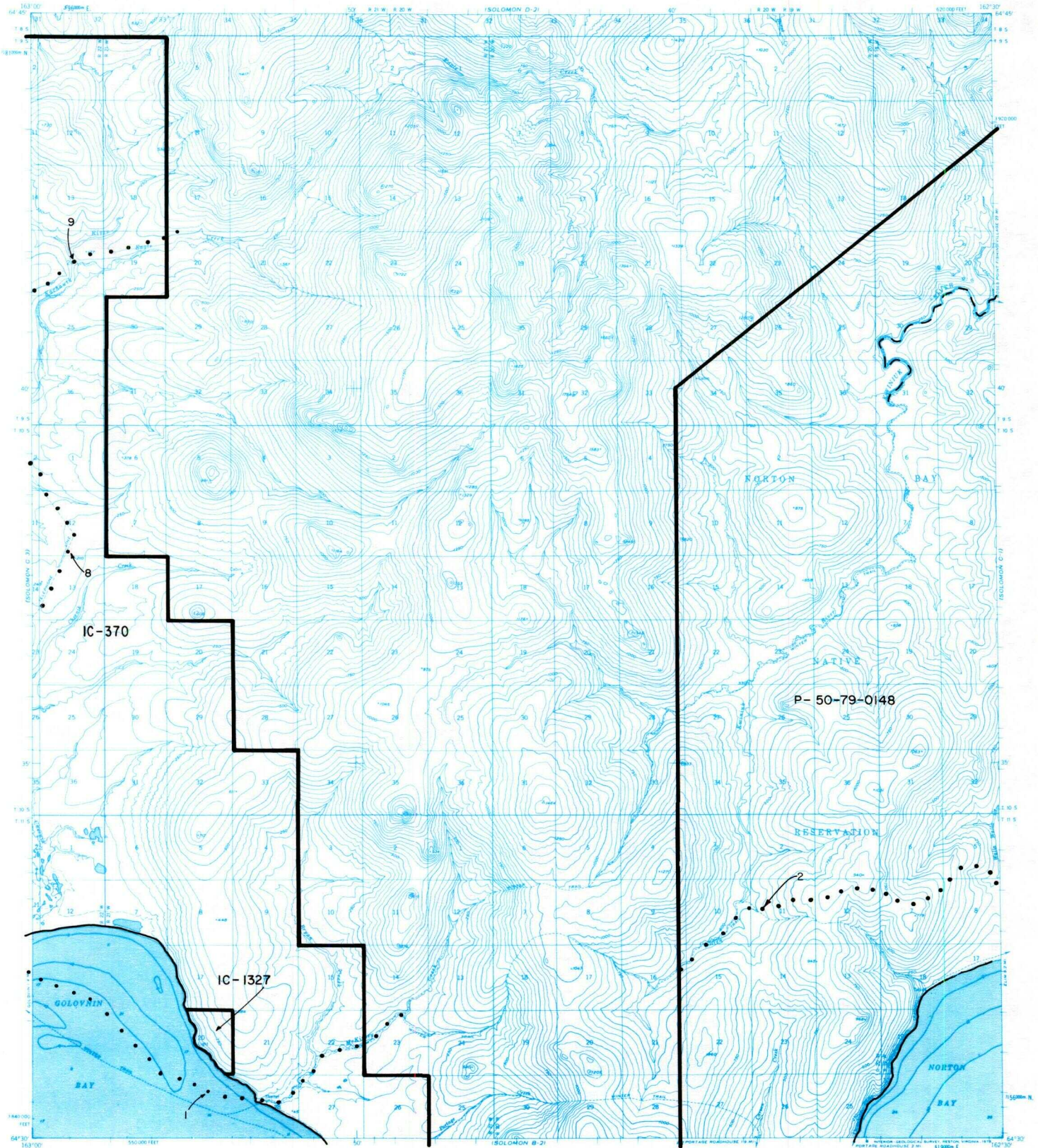


# SOLOMON C-2



## RESERVED EASEMENTS

- EIN 1** An easement for an access trail twenty-five (25) feet in width from the eastern border of Section 23, T. 11 S., R. 21 W., K.R.M., westerly across Golovin Sound, through the village of Golovin and across Golovin Lagoon to the western boundary of Section 1, T. 11 S., R. 24 W., K.R.M. The season of use is limited to winter.
- EIN 2** An easement for an access trail twenty-five (25) feet in width from Section 15, T. 11 S., R. 20 W., K.R.M., northeasterly to Section 16, T. 8 S., R. 14 W., K.R.M. The season of use is limited to winter.
- EIN 8** An easement for an access trail fifty (50) feet in width from Golovin northerly to trail EIN 9 in Section 35, T. 9 S., R. 22 W., K.R.M.
- EIN 9** An easement for an access trail fifty (50) feet in width from trail EIN 8 in Section 35, T. 9 S., R. 22 W., K.R.M. at the Kachauik River, northeasterly to public land.