

Susitna Forestry Guidelines

December, 1991



Alaska Department of
**NATURAL
RESOURCES**

Division of Land
Land & Resources Section
P.O. Box 107005
Anchorage, Alaska 99510-7005



HOW TO USE THE SUSITNA FORESTRY GUIDELINES

TO FIND...

SEE...

Background information on the Susitna Forestry Guidelines	Chapter 1 - Introduction
Overview of forest management program in the Susitna valley, including - <ul style="list-style-type: none">◆ Total amount of timber on state land◆ Annual allowable cut◆ Personal use program	Chapter 2, Section I - Forest Management Program
Guidelines for designing timber sales, such as - <ul style="list-style-type: none">◆ Size◆ Shape◆ Harvest methods◆ Reforestation	Chapter 2, Section II - Timber Sale Design and Management
Guidelines for managing timber in special areas such as - <ul style="list-style-type: none">◆ Special habitats◆ Important recreation areas◆ Wetlands◆ Agricultural lands◆ Cultural and historic (heritage) sites	Chapter 2, Section III - Management of Special Areas
Guidelines for road design, construction, and management -	Chapter 2, Section IV - Access Design and Management
Guidelines for public notice -	Chapter 2, Section V - Public Notice and Interagency Coordination
Directions for changing the guidelines -	Chapter 3 - Implementation, Procedures for Guideline Modification
Information on other topics -	Index
Definitions -	Appendix A - Glossary
Information on specific sites -	Map in back pocket - find the subunit name for the site, then look up the subunit name in the index.

Three main tasks guided by the Susitna Forestry Guidelines are designing timber sales and personal use areas, authorizing individual personal use permits, and designing timber roads. Charts of how to use the guidelines for these tasks are on the colored pages (pp.vi. to ix.).

SUSITNA FORESTRY GUIDELINES

Prepared by Alaska Department of Natural Resources

Division of Land

Division of Forestry

in cooperation with

Alaska Department of Fish and Game

December 1991

Providing jobs, habitat, wood, recreation and other benefits from state-owned forests is part of the Department of Natural Resources' mission. Many ideas exist on how best to fulfill this task. The Susitna Forestry Guidelines were developed with extensive input from other agencies and the public to balance different demands on Susitna valley forests and help achieve this mission. The Guidelines direct management of forest resources, set standards for timber management and access, identify areas available for timber harvesting, summarize current timber volumes, and establish the annual allowable cut.



Table of Contents

Summary of How to use the Susitna Forestry Guidelines	inside cover
List of Maps, Figures, and Tables	iv
Acronyms and Abbreviations	v
Using The Susitna Forestry Guidelines for Timber Sales, Personal Use Permits, and Roads	vi
Chapter 1 - INTRODUCTION	1
Summary of Purpose	1
Relationship to Land Use Plans and Legislation	1
State land use plans	1
Susitna Basin Recreation Rivers Management Plan	3
Forest Practices Act	3
Five-year Schedule of Timber Sales and Forest Land Use Plans	3
Area Affected by Susitna Forest Guidelines	4
Planning Process	5
Planning Team	5
Citizens' Advisory Committee	5
Public Review	5
How the Guidelines Were Developed	5
Who Implements the Guidelines	6
Chapter 2 - FOREST MANAGEMENT GUIDELINES	7
Section I - Forest Management Program	7
Timber Sale Program and Timber Base	7
Personal Use Wood	12
Research Natural Areas and Experimental Forests	14
Fire Management	17

Section II - <i>Timber Sale Design and Management</i>	17
Public Use	17
Timber Sale Design	17
Harvesting Systems	20
Harvesting Schedules	20
Slash Disposal	21
Site Preparation	22
Reforestation	22
Use of Chemicals	23
Section III - <i>Management of Special Areas</i>	23
Agricultural Lands	23
Bald Eagle Habitat	24
Brown Bear Habitat	25
Deception Creek	25
Fish and Wildlife Habitat -- General	26
Heritage Sites	26
Marten Habitat	27
Moose Habitat	27
Private Lands	27
Recreation and Scenic Resources	28
Rivers, Streams, and Lakes	32
Trail Corridors	35
Trumpeter Swan Nesting Areas	36
Wetlands	36
Section IV - <i>Access Design and Management</i>	37
Access Location and Design	37
Road Construction	39
Road Management	39
Section V - <i>Public Notice and Interagency Coordination</i>	40

Chapter 3 - IMPLEMENTATION	43
Procedures for Guideline Modification	43
Periodic Review	43
Changes to the Guidelines	43
Research	45
Recommended Changes in Land Use Plans	46
Funding and Enforcement	47
Rights-of-way	48

APPENDICES

Appendix A - Glossary	49
Appendix B - Citizens' Advisory Committee Participating Organizations	57
Appendix C-1 - Gross Timber Acreage by Subunit	59
Appendix C-2 - Gross Timber Volume by Subunit	67
Appendix D - Forest Land Use Plan Requirements	73
Appendix E - Recreation Opportunity Spectrum for the Susitna Forestry Guidelines Area	75
Appendix F - Requirements for Winter Travel	77
Appendix G - Acknowledgments, Planning Team, Staff, Technical Advisors and Signature Pages	79
Appendix H - Publications Related to the Guidelines	83

INDEX	85
------------------------	----

List of Maps, Figures, and Tables

Summary Map: This map shows land ownership, designations, phase boundaries, land use plan and subunit names, and recommended recreation sites. Pocket in Back

Map 1: Location of Planning Area 2

Maps 2a, 2b: Experimental Forests 15,16

Map 3: Generalized Fire Protection Levels 18

Map 4: Recreation Sites 31

Figure 1: Examples of Cutting Units and Harvest Units 18a

Figure 2: Examples of Harvesting Setbacks on River Islands . . . 34a

Table 1: Estimated Acreage by Land Ownership 4




Table 2: Estimated Gross Acreage of Land Use Designations on Statelands in the Guidelines Area 4

Acronyms and Abbreviations

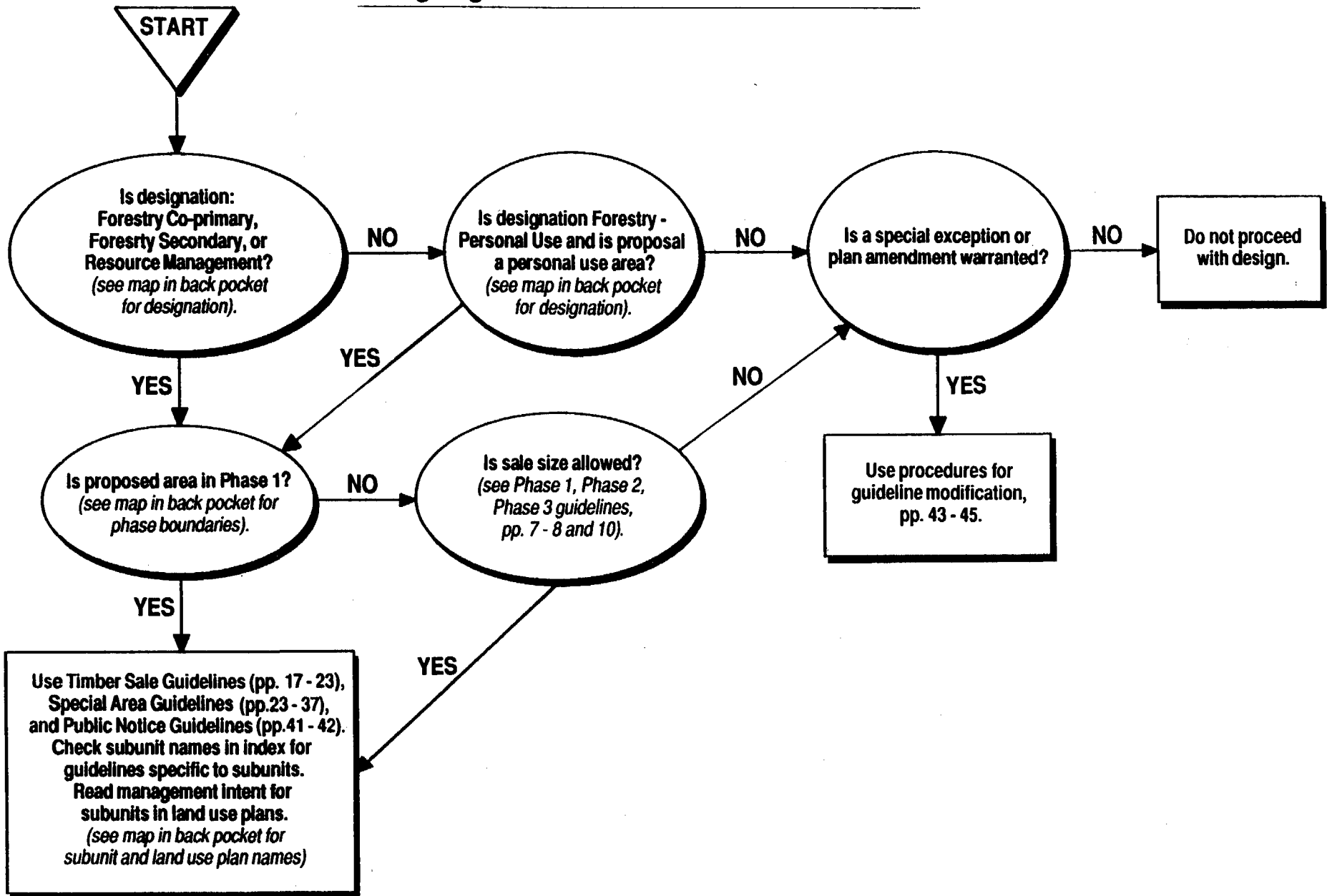
AAC	Alaska Administrative Code
AS	Alaska Statute
bf	board foot
DEC	Alaska Department of Environmental Conservation
DFG	Alaska Department of Fish and Game
DNR	Alaska Department of Natural Resources
DOF	DNR Division of Forestry
DPOR	DNR Division of Parks and Outdoor Recreation
FLUP	Forest Land Use Plan
FMR	Forest Management Report
FPA	Alaska Forest Practices Act
FY	fiscal year (State of Alaska)
INHT	Iditarod National Historic Trail
Mbf	thousand board feet
MMbf	million board feet
OHA	DPOR Office of History and Archaeology
RNA	Research Natural Area
SAP	Susitna Area Plan
SFG	Susitna Forestry Guidelines
SHPO	DPOR State Historic Preservation Office
USC	US Code
USDI	US Department of the Interior

USING THE SUSITNA FORESTRY GUIDELINES FOR TIMBER SALES, PERSONAL USE PERMITS, AND ROADS

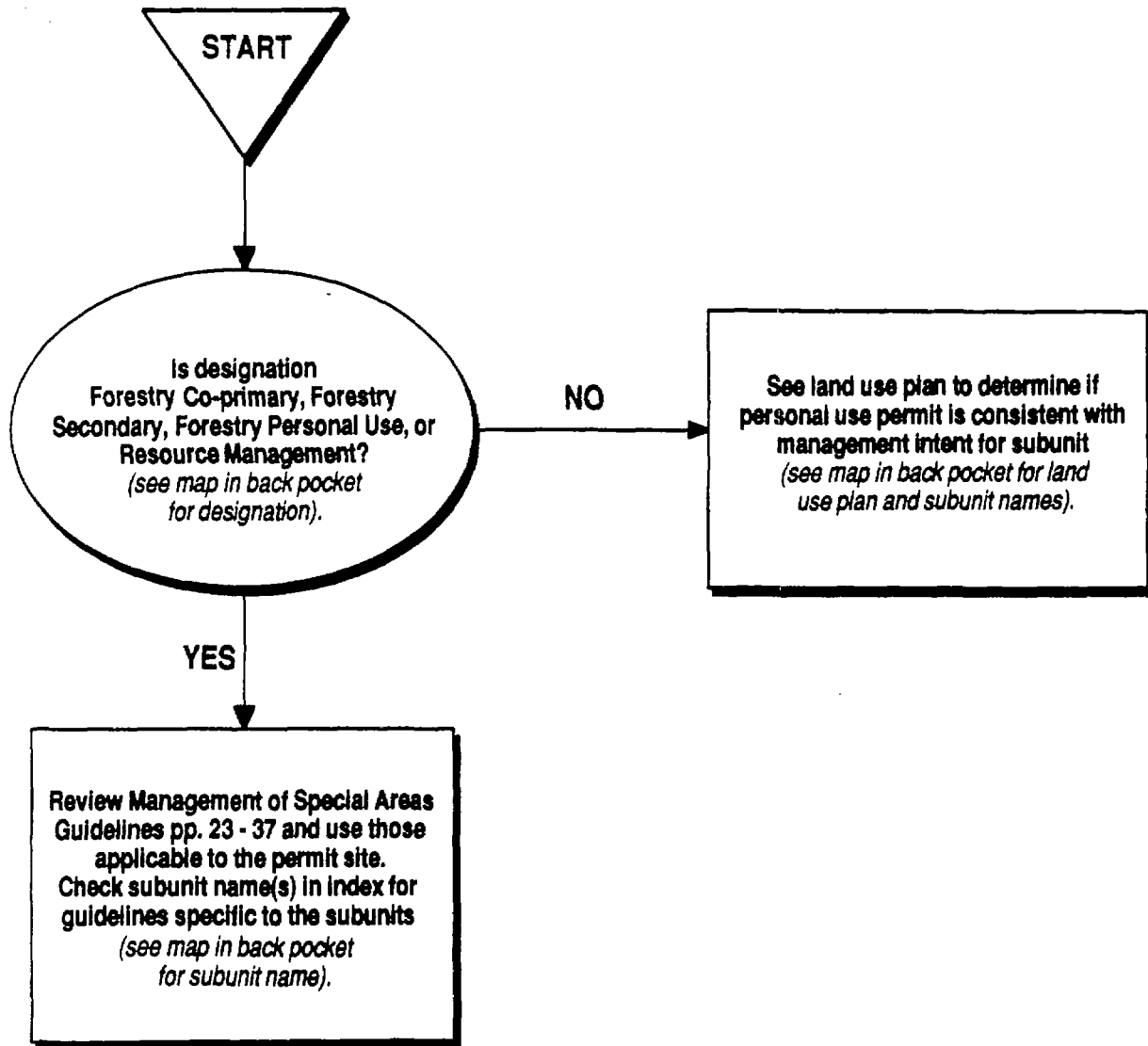
An overview of how to use the Susitna Forestry Guidelines is on the inside front cover of this document. Three main tasks subject to the Susitna Forestry Guidelines are designing timber sales and personal use areas, authorizing individual personal use permits, and designing timber roads. More detailed directions for using the guidelines for these tasks are in the charts that follow.

In the charts, the starting point for using the guidelines is indicated by a triangle . Ovals  show questions to answer before proceeding. Final tasks are shown in rectangles .

Designing a Timber Sale or Personal Use Area



Authorizing Personal Use Timber Harvest by Individual Permit



Designing Road Access to a State Timber Sale or Personal Use Area

