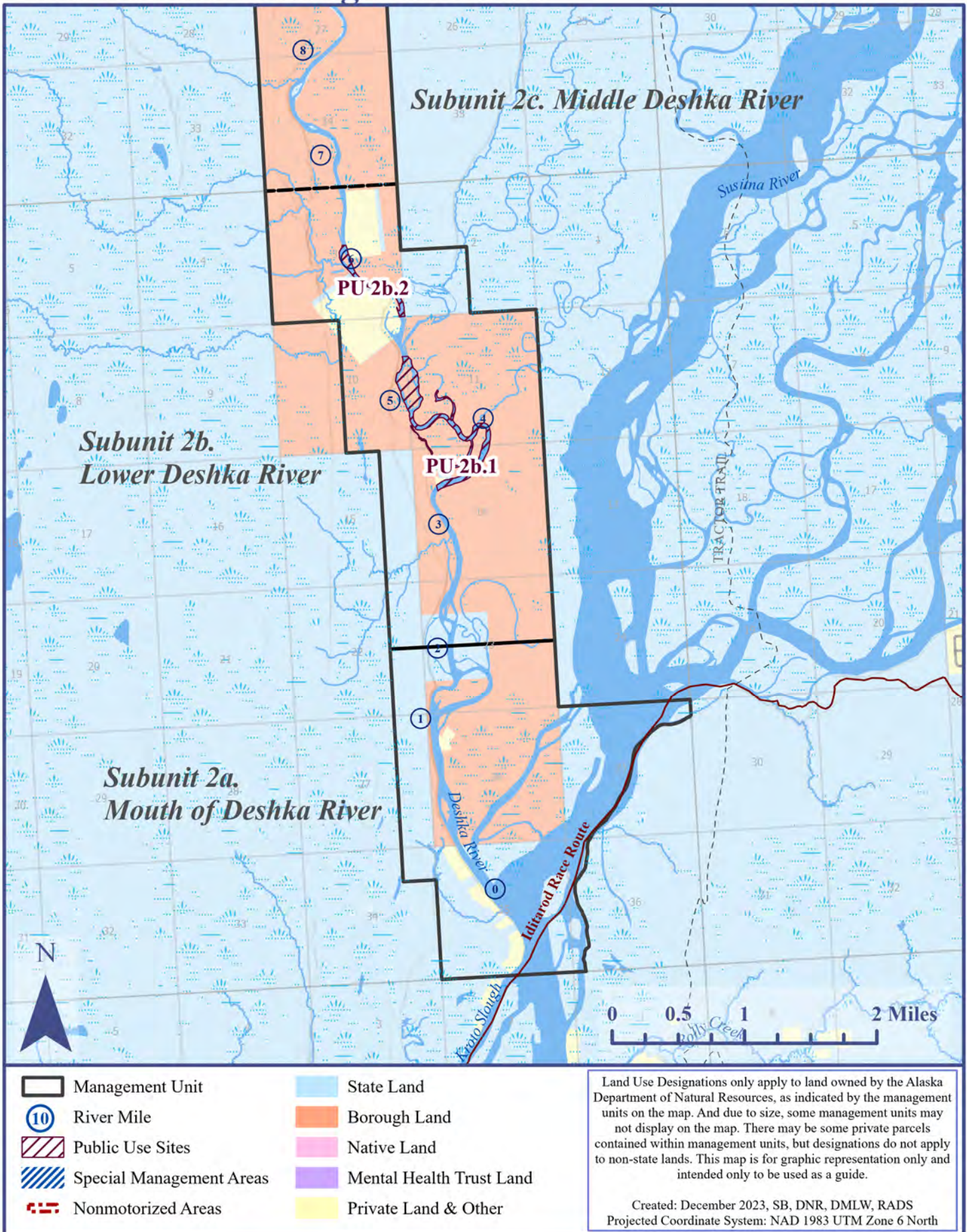


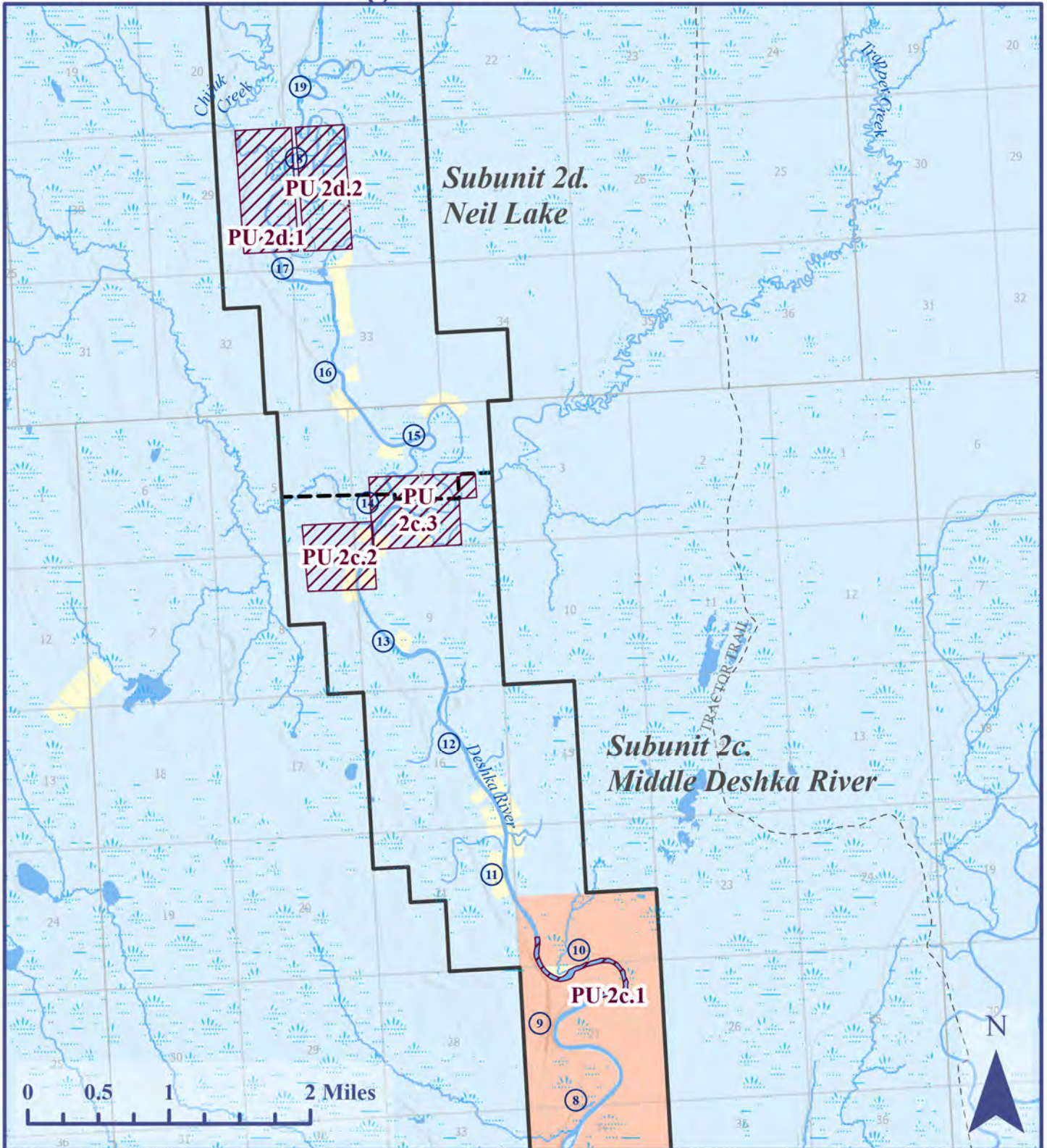
Deshka River Management Unit

MAP 1



Deshka River Management Unit

MAP 2



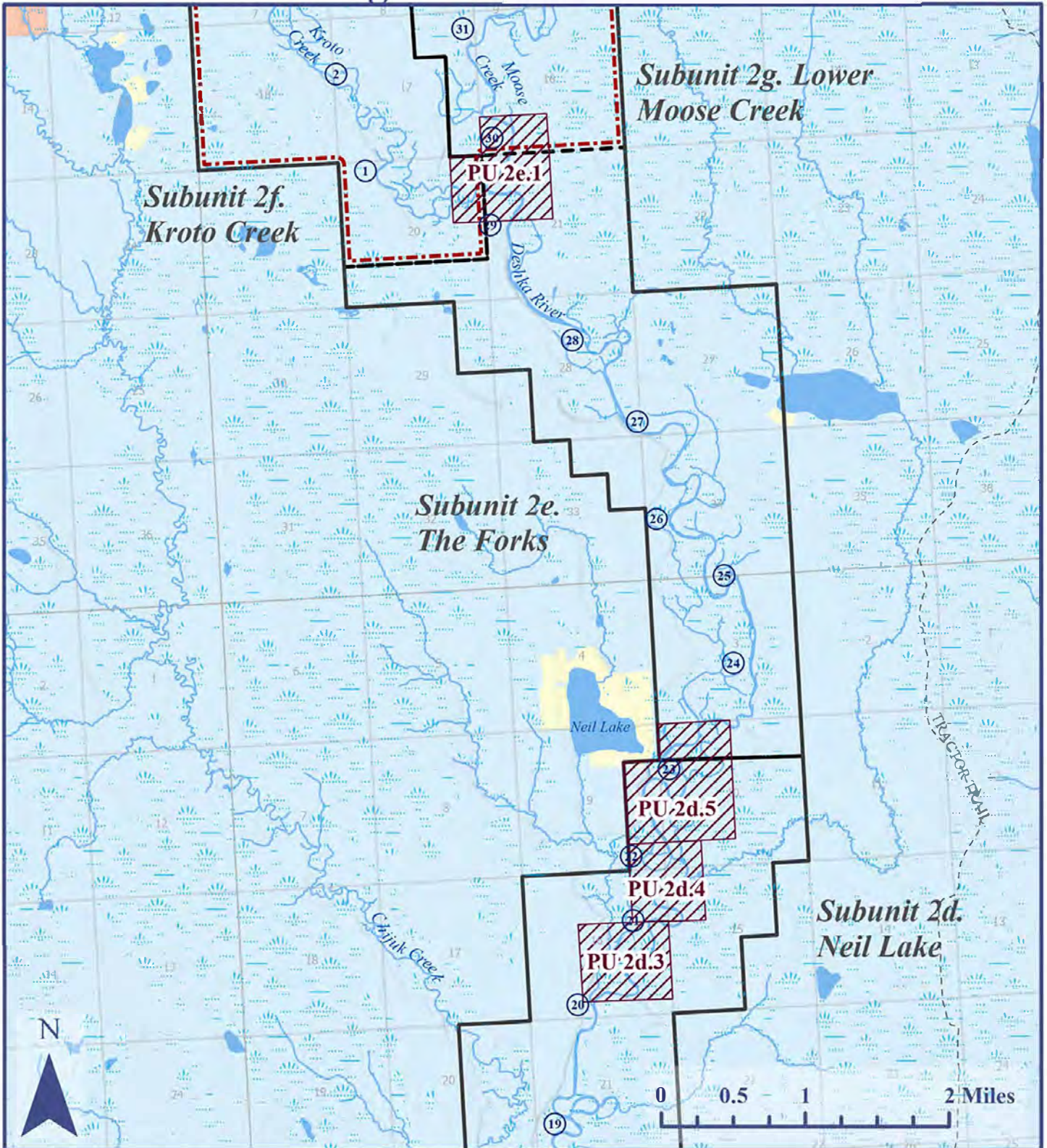
- | | |
|--------------------------|--------------------------|
| Management Unit | State Land |
| River Mile | Borough Land |
| Public Use Sites | Native Land |
| Special Management Areas | Mental Health Trust Land |
| Nonmotorized Areas | Private Land & Other |

Land Use Designations only apply to land owned by the Alaska Department of Natural Resources, as indicated by the management units on the map. And due to size, some management units may not display on the map. There may be some private parcels contained within management units, but designations do not apply to non-state lands. This map is for graphic representation only and intended only to be used as a guide.

Created: December 2023, SB, DNR, DMLW, RADS
 Projected Coordinate System: NAD 1983 UTM Zone 6 North

Deshka River Management Unit

MAP 3



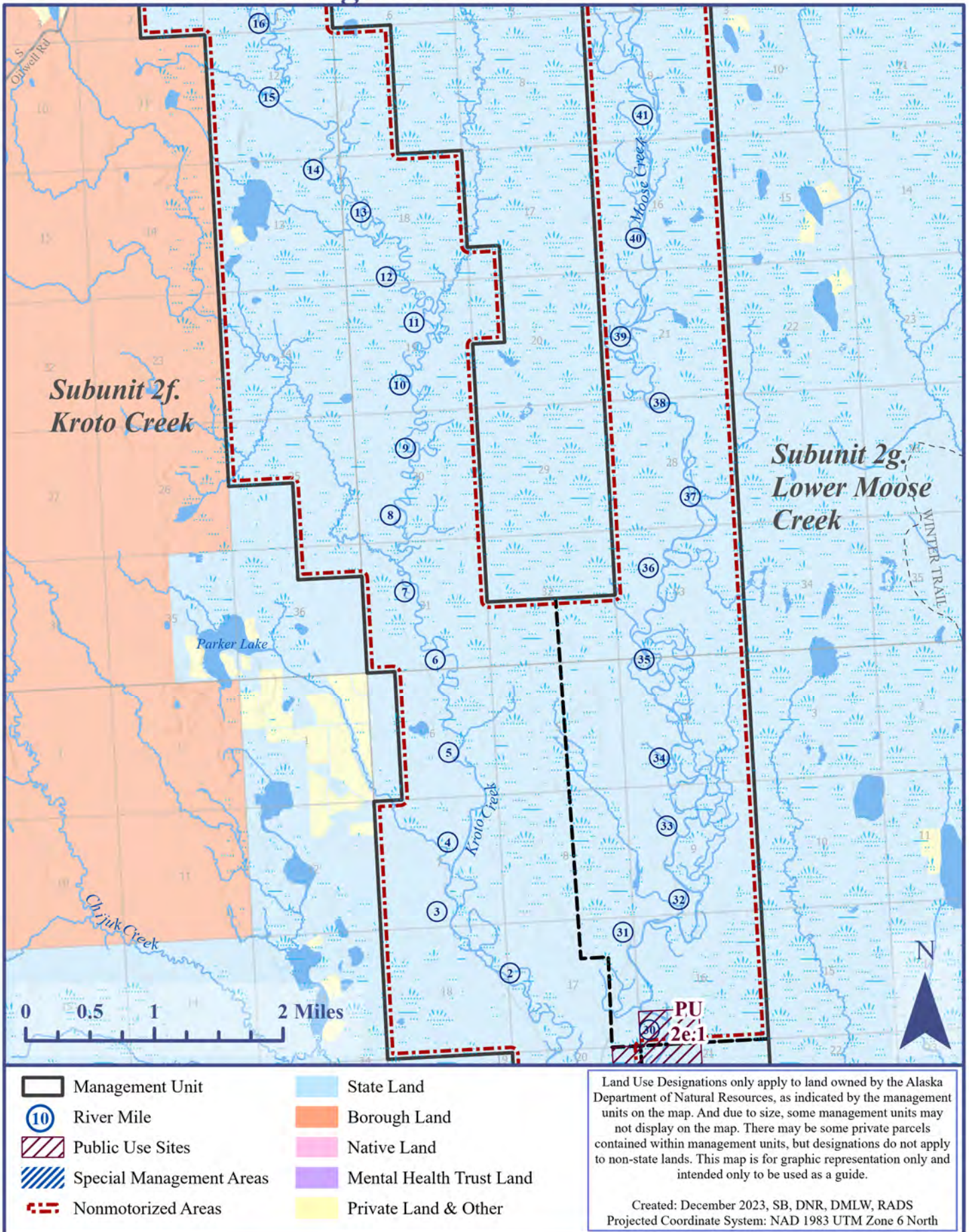
- | | |
|--------------------------|--------------------------|
| Management Unit | State Land |
| River Mile | Borough Land |
| Public Use Sites | Native Land |
| Special Management Areas | Mental Health Trust Land |
| Nonmotorized Areas | Private Land & Other |

Land Use Designations only apply to land owned by the Alaska Department of Natural Resources, as indicated by the management units on the map. And due to size, some management units may not display on the map. There may be some private parcels contained within management units, but designations do not apply to non-state lands. This map is for graphic representation only and intended only to be used as a guide.

Created: December 2023, SB, DNR, DMLW, RADS
 Projected Coordinate System: NAD 1983 UTM Zone 6 North

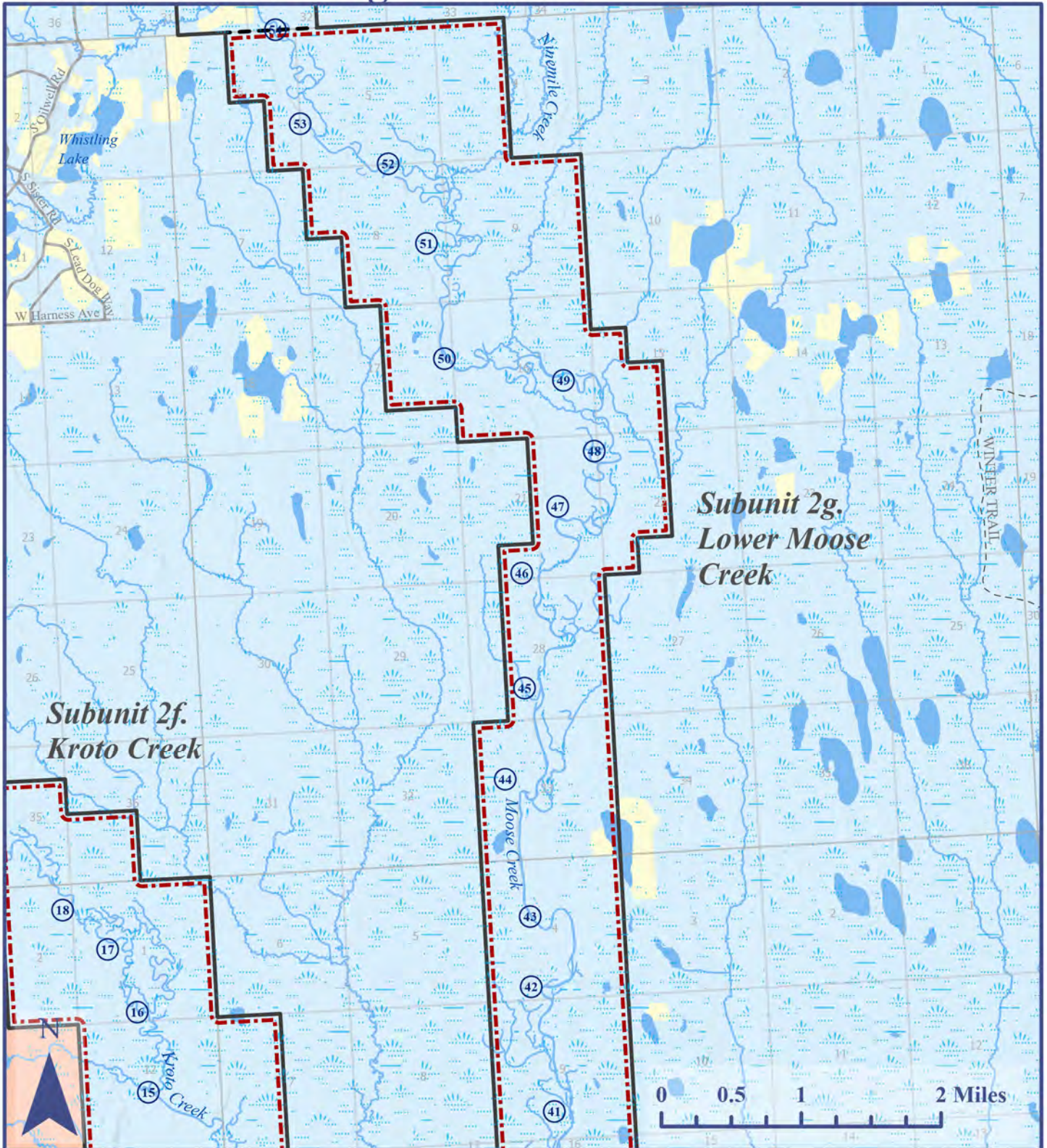
Deshka River Management Unit

MAP 4



Deshka River Management Unit

MAP 5



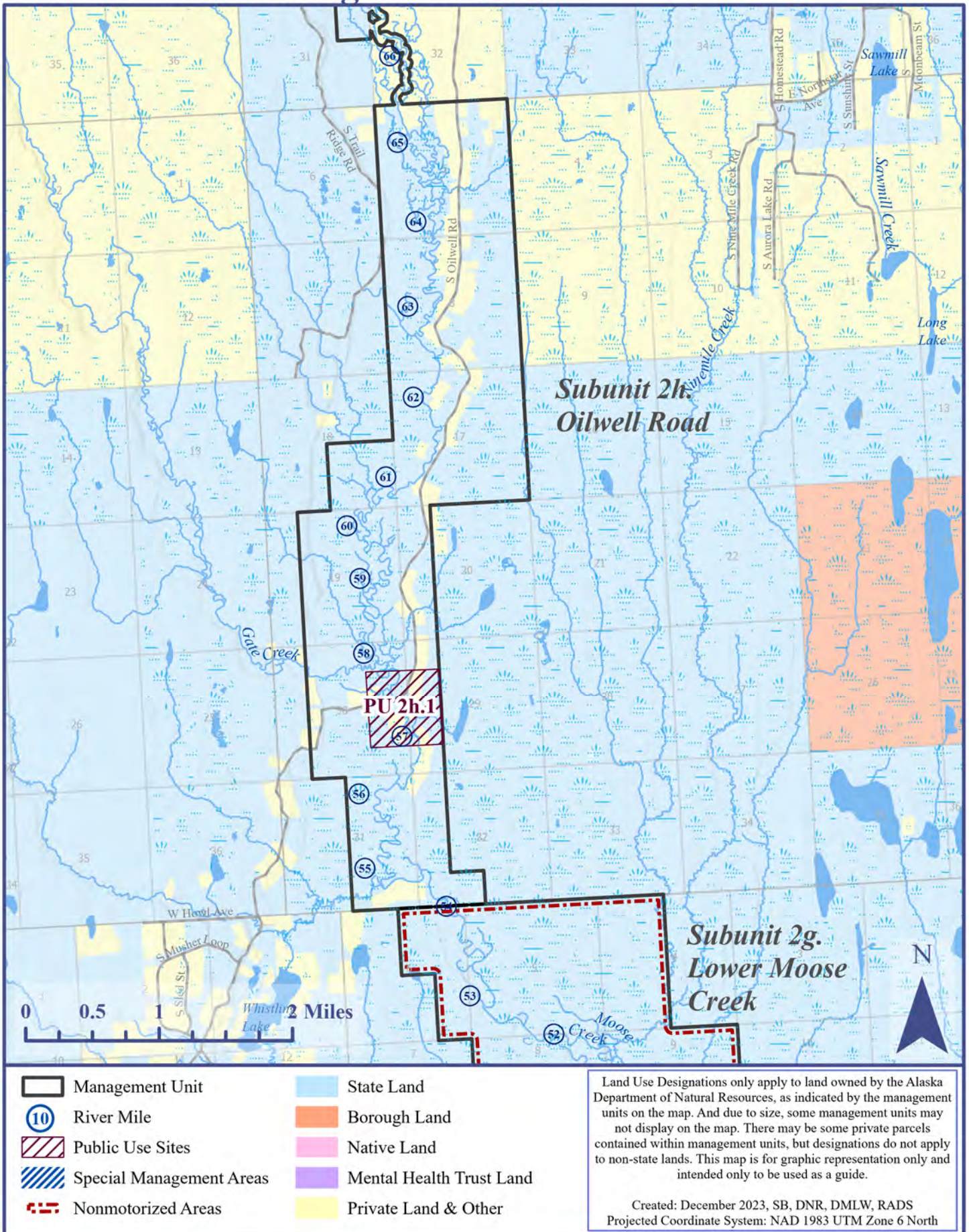
- | | |
|--------------------------|--------------------------|
| Management Unit | State Land |
| River Mile | Borough Land |
| Public Use Sites | Native Land |
| Special Management Areas | Mental Health Trust Land |
| Nonmotorized Areas | Private Land & Other |

Land Use Designations only apply to land owned by the Alaska Department of Natural Resources, as indicated by the management units on the map. And due to size, some management units may not display on the map. There may be some private parcels contained within management units, but designations do not apply to non-state lands. This map is for graphic representation only and intended only to be used as a guide.

Created: December 2023, SB, DNR, DMLW, RADS
 Projected Coordinate System: NAD 1983 UTM Zone 6 North

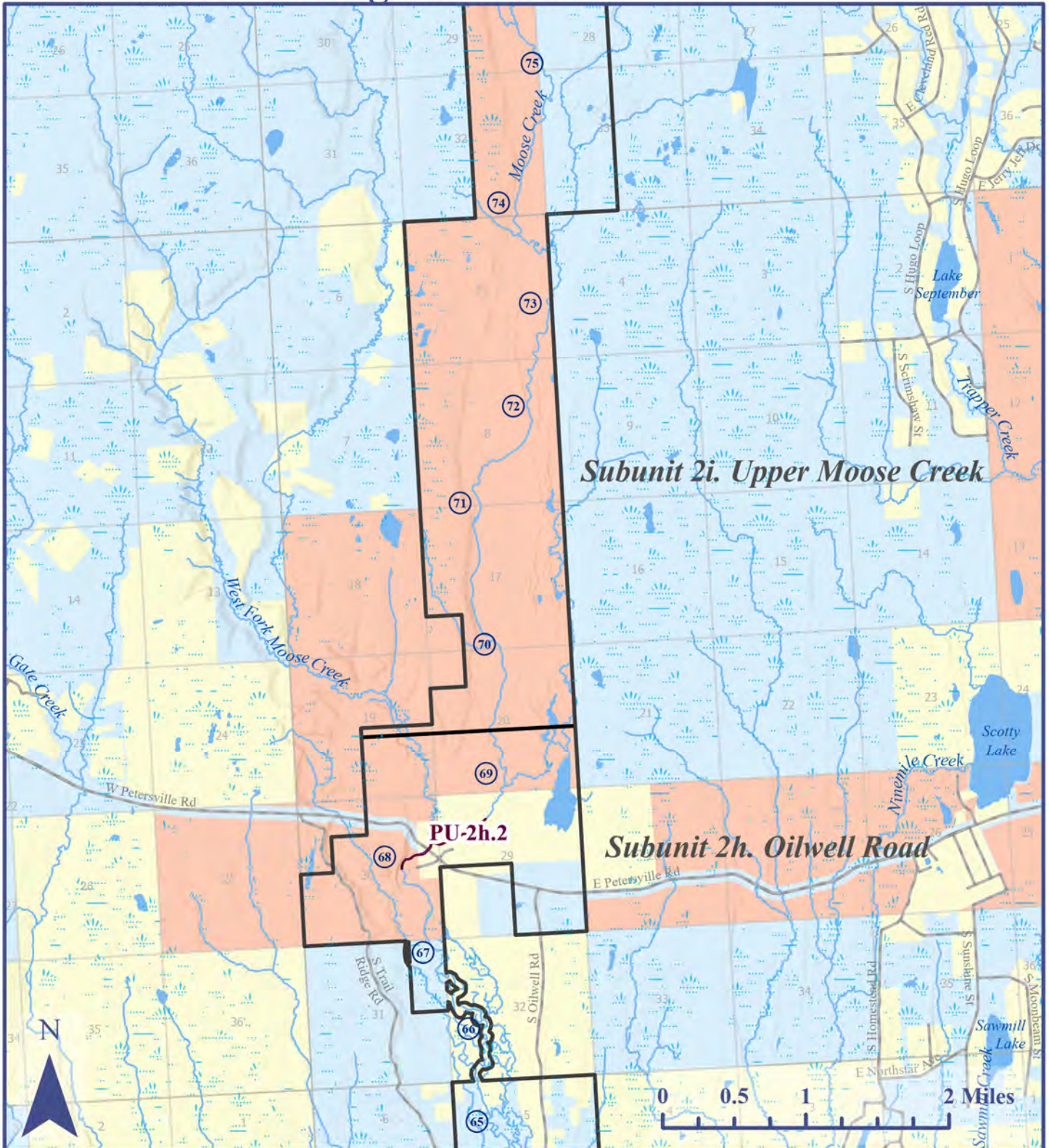
Deshka River Management Unit

MAP 6



Deshka River Management Unit

MAP 7



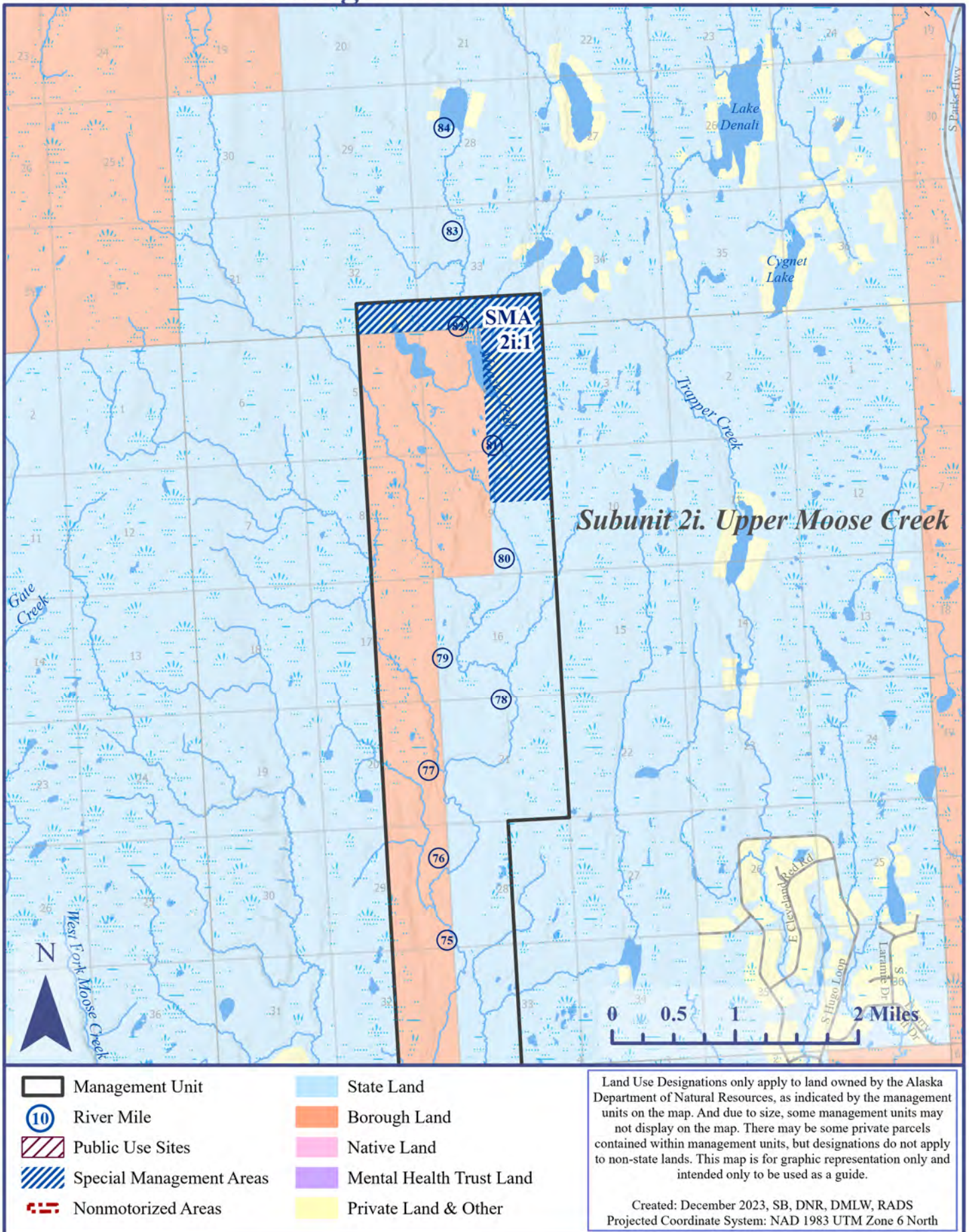
- | | |
|--------------------------|--------------------------|
| Management Unit | State Land |
| River Mile | Borough Land |
| Public Use Sites | Native Land |
| Special Management Areas | Mental Health Trust Land |
| Nonmotorized Areas | Private Land & Other |

Land Use Designations only apply to land owned by the Alaska Department of Natural Resources, as indicated by the management units on the map. And due to size, some management units may not display on the map. There may be some private parcels contained within management units, but designations do not apply to non-state lands. This map is for graphic representation only and intended only to be used as a guide.

Created: December 2023, SB, DNR, DMLW, RADS
 Projected Coordinate System: NAD 1983 UTM Zone 6 North

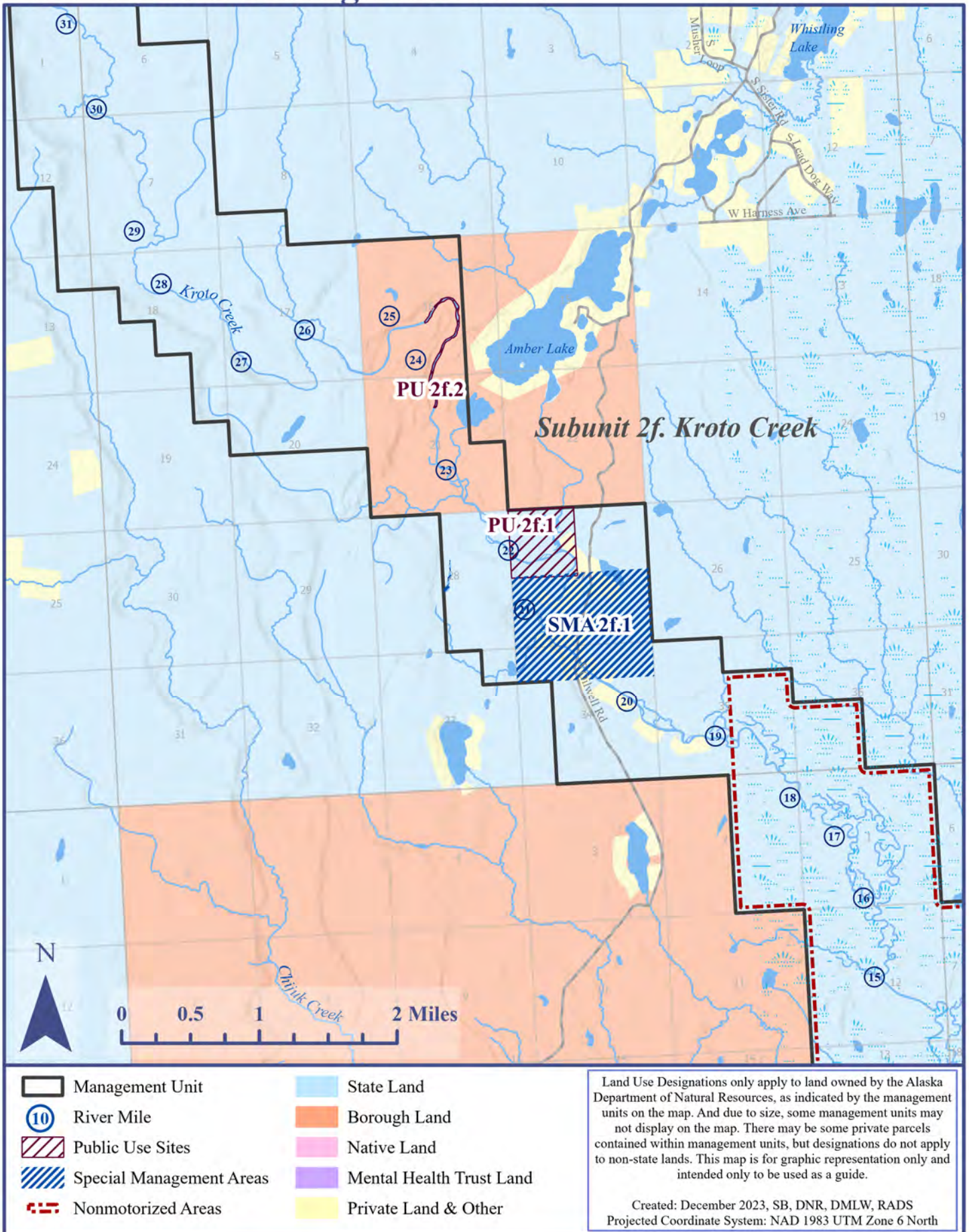
Deshka River Management Unit

MAP 8



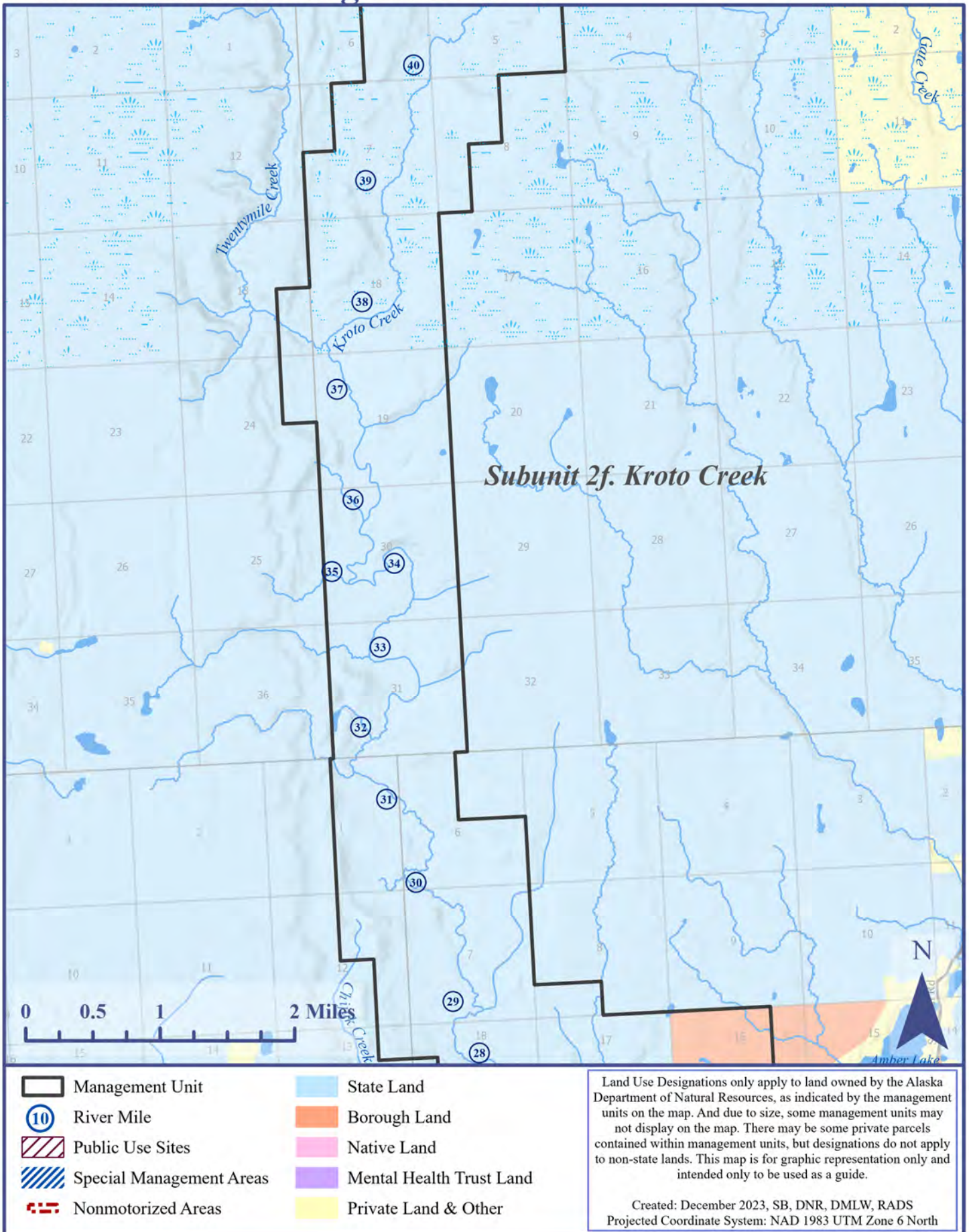
Deshka River Management Unit

MAP 9



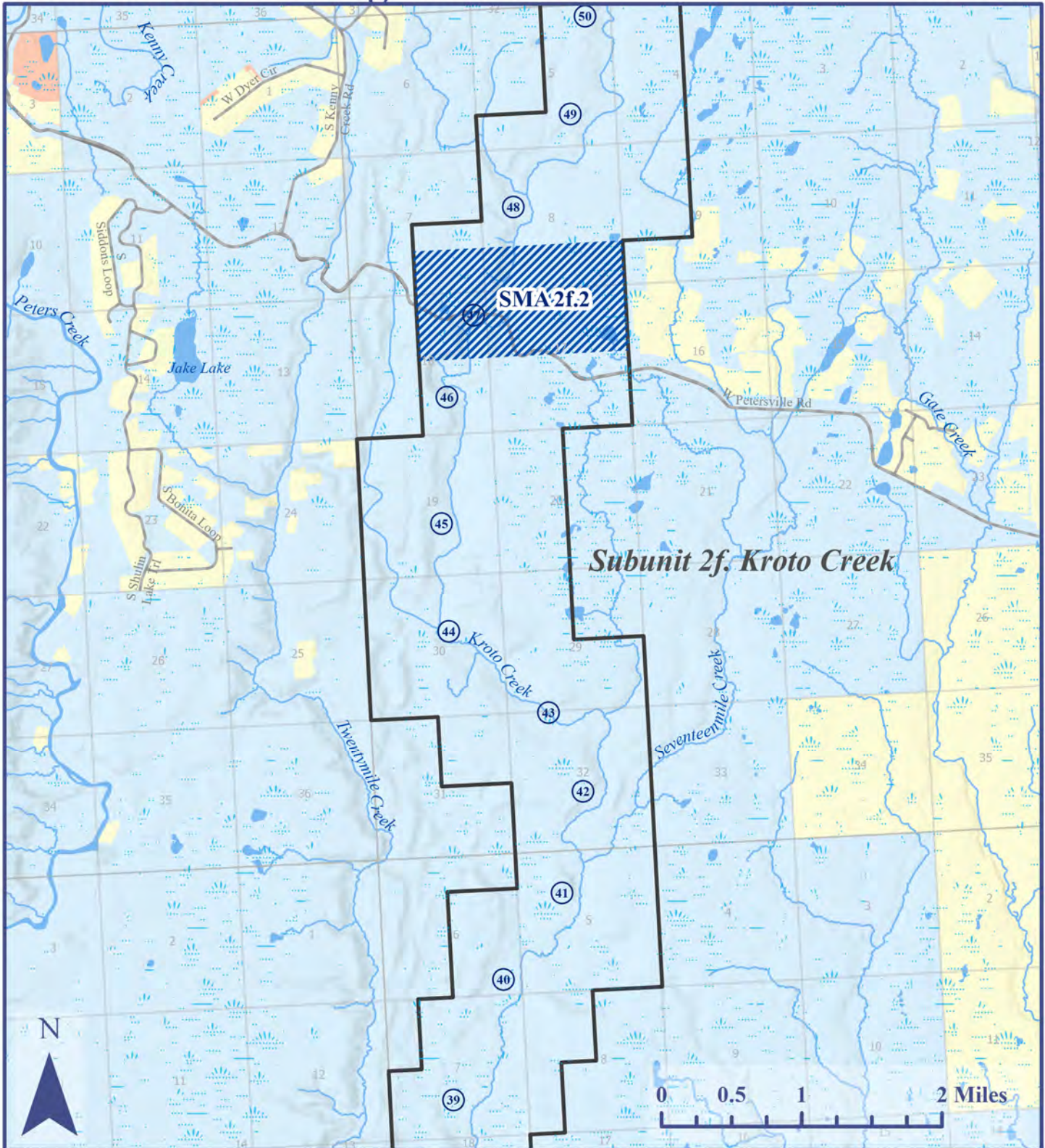
Deshka River Management Unit

MAP 10



Deshka River Management Unit

MAP 11



- | | |
|--------------------------|--------------------------|
| Management Unit | State Land |
| River Mile | Borough Land |
| Public Use Sites | Native Land |
| Special Management Areas | Mental Health Trust Land |
| Nonmotorized Areas | Private Land & Other |

Land Use Designations only apply to land owned by the Alaska Department of Natural Resources, as indicated by the management units on the map. And due to size, some management units may not display on the map. There may be some private parcels contained within management units, but designations do not apply to non-state lands. This map is for graphic representation only and intended only to be used as a guide.

Created: December 2023, SB, DNR, DMLW, RADS
 Projected Coordinate System: NAD 1983 UTM Zone 6 North

Deshka River Management Unit

MAP 12

