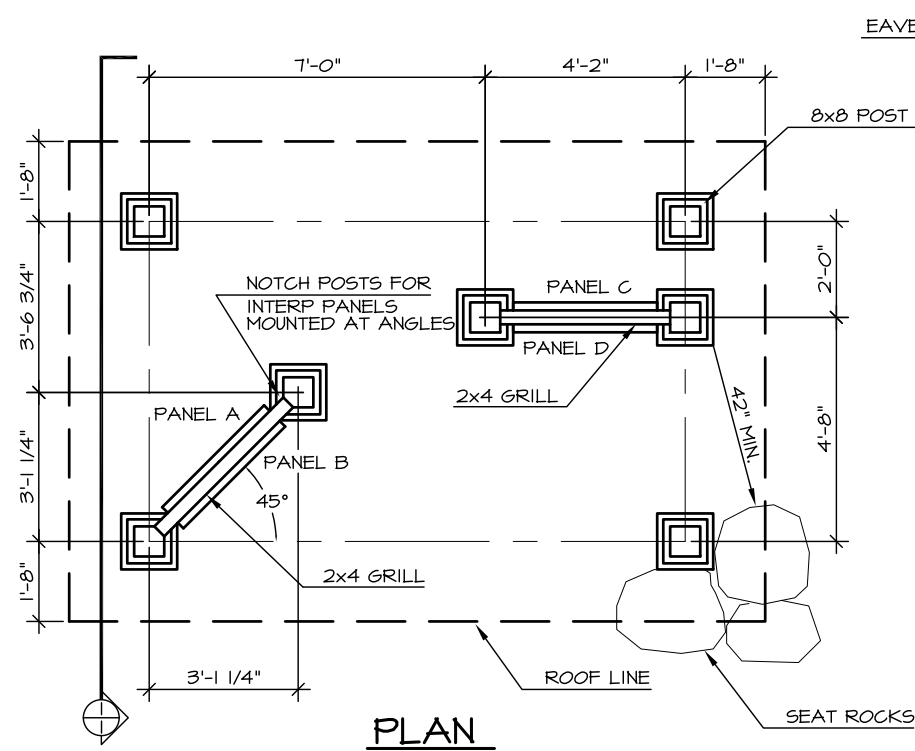


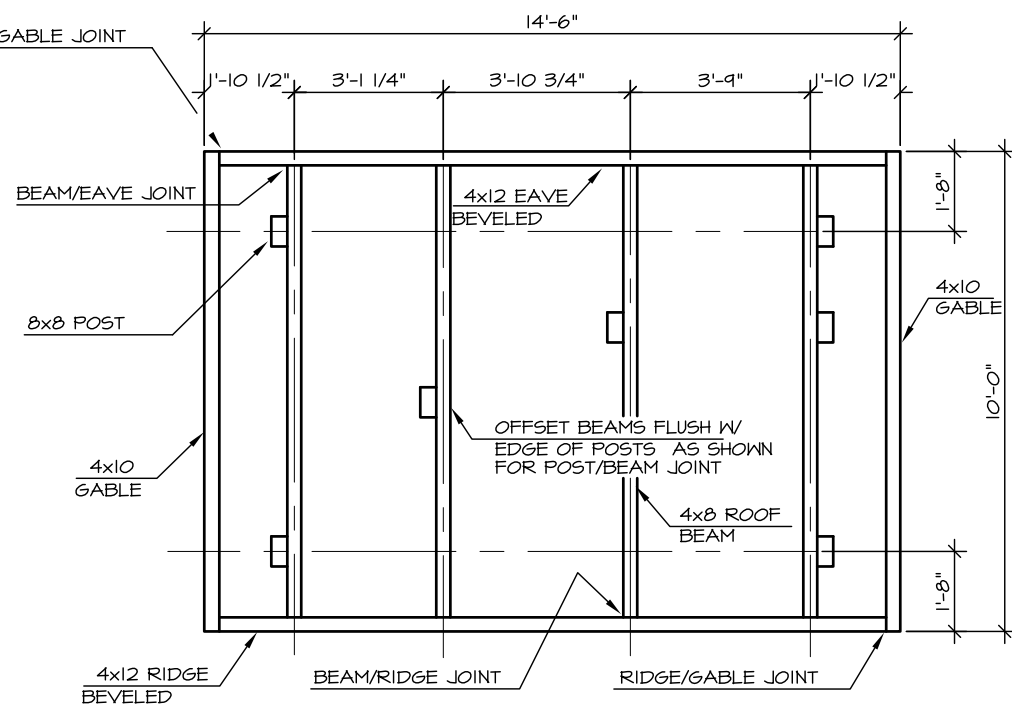


PREPARED: HL  
 DRAWN: TLC  
 REVIEWED: DH  
 DATE: JUN 96

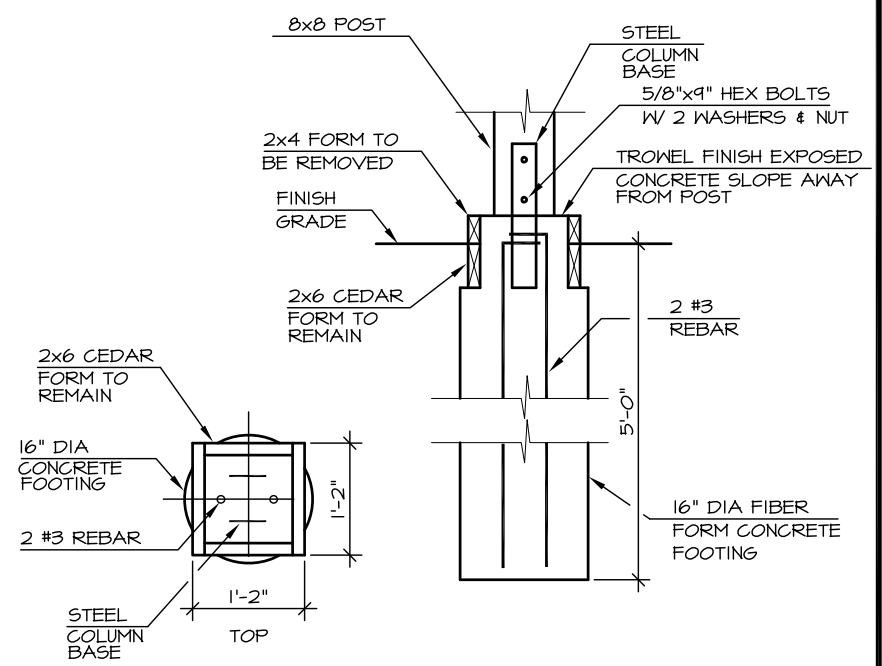
SHEET 1  
 S-10B  
 OF 3 SHEETS



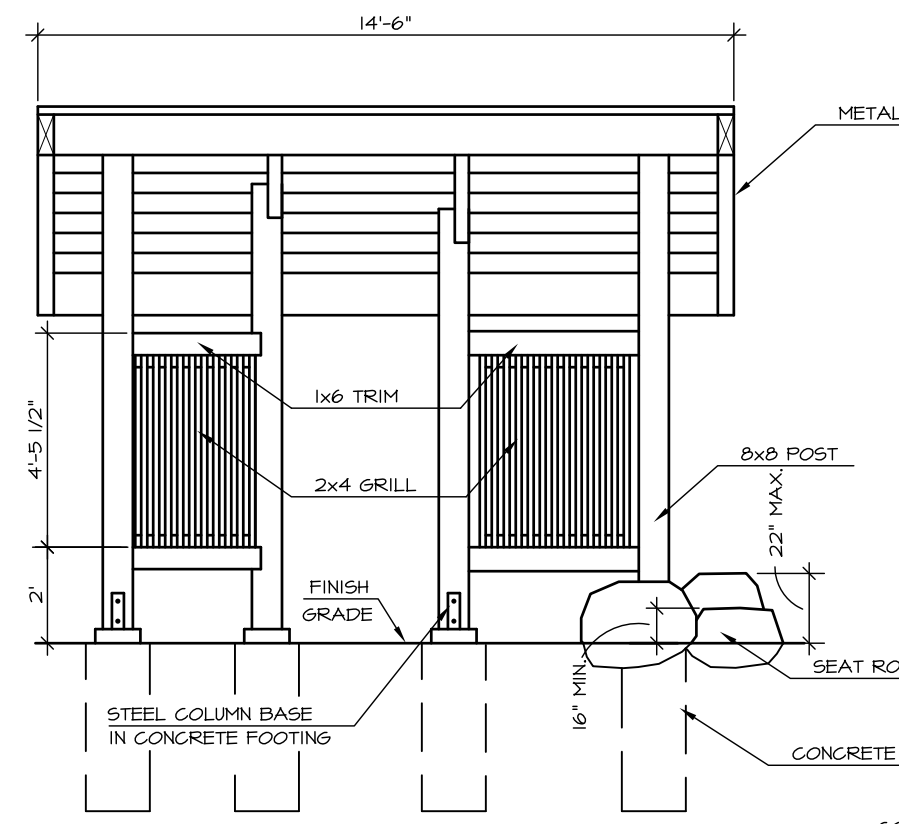
PLAN



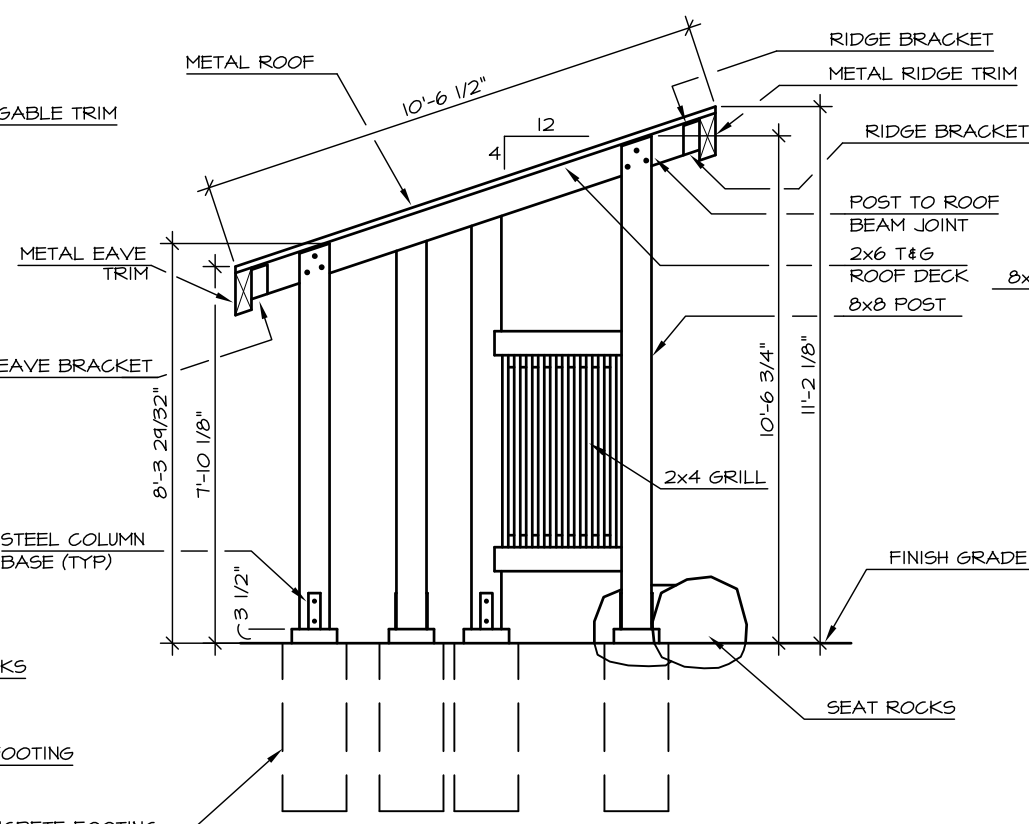
ROOF FRAMING PLAN



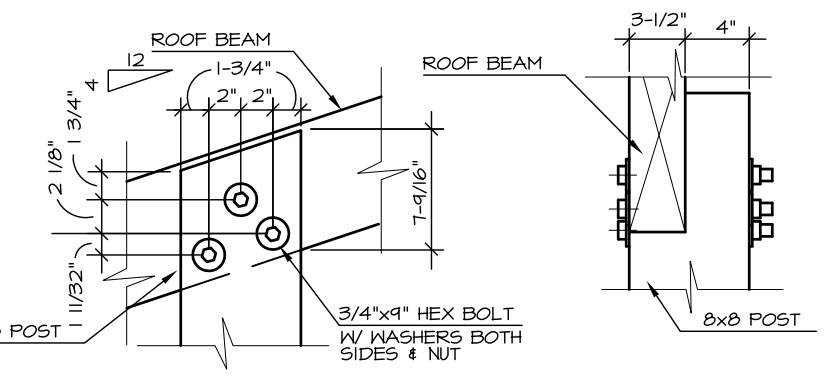
2 CONCRETE FOOTING



FRONT



TRANSVERSE SECTION



3 POST/ROOF BEAM JOINT

NOTE: OPPOSITE SIDE JOINT IS SIMILAR

NOTE: COUNTERBORE BOLTS IN ROOF BOARDS AS REQUIRED TO CLEAR METAL ROOF TRIM

FOR INFORMATIONAL USE ONLY  
 Alaska State Parks

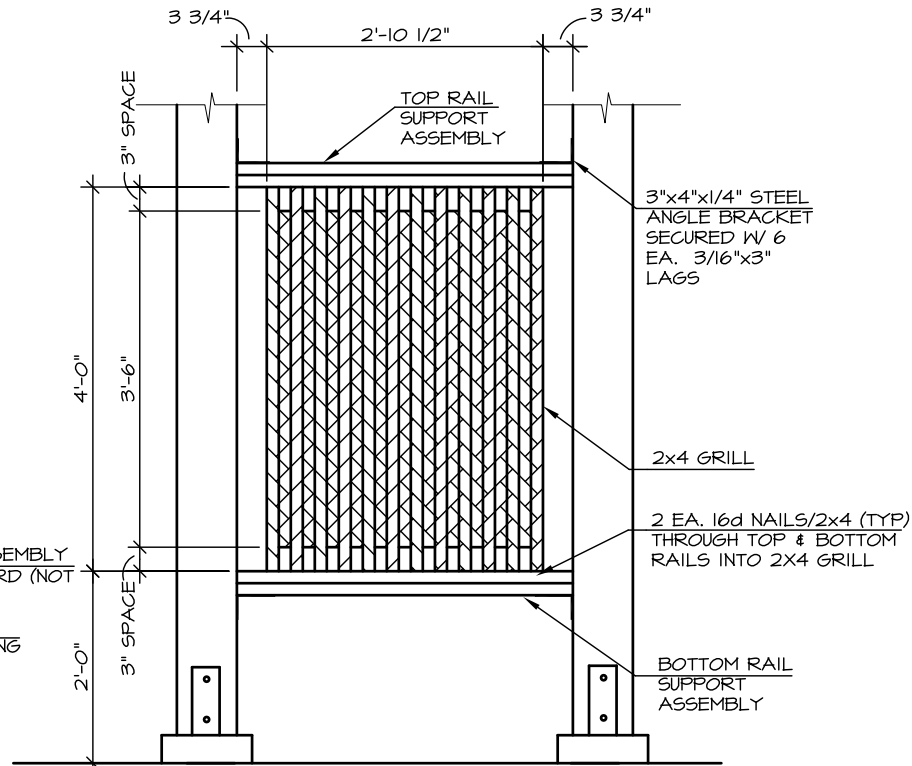
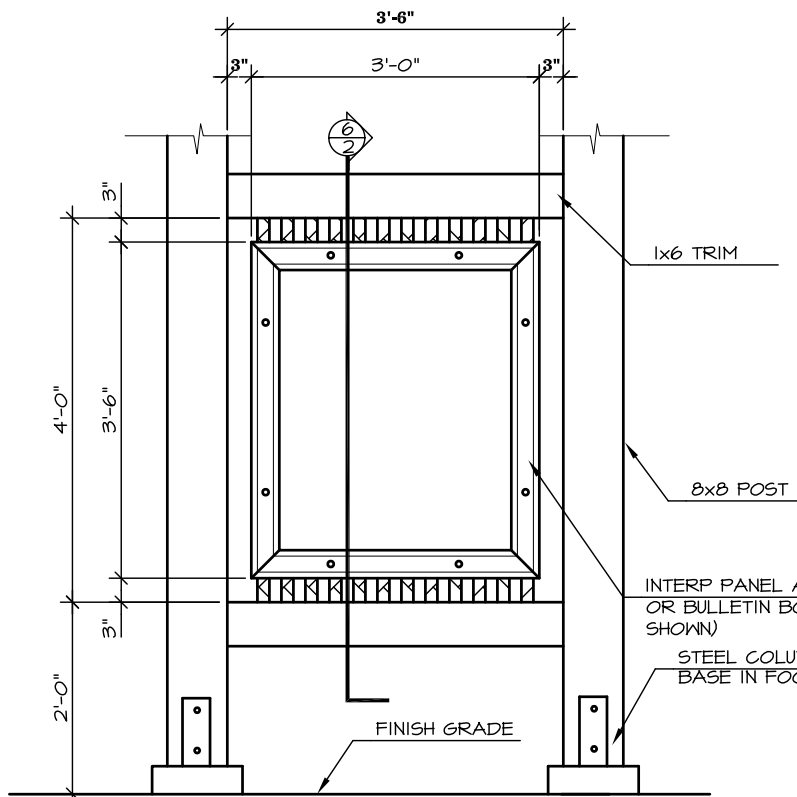
NO.	REVISION	DATE	APPROVED
7	CHANGED STATE PARK LOGO	04/10	MP5
6	CHANGED TITLE BLOCK	12/07	MP5
5	REPLACED STAMP	3/04	MP5
4	CHANGED ACTUAL TIMBER SIZES TO NOMINAL	01/03	B6D
3	REPLACED STAMP	3/02	DH
2	CHANGED DRAWING NUMBER	12/97	B6D
1	ADDED DIMS FOR GRAPHICS	6/97	D. HAGG



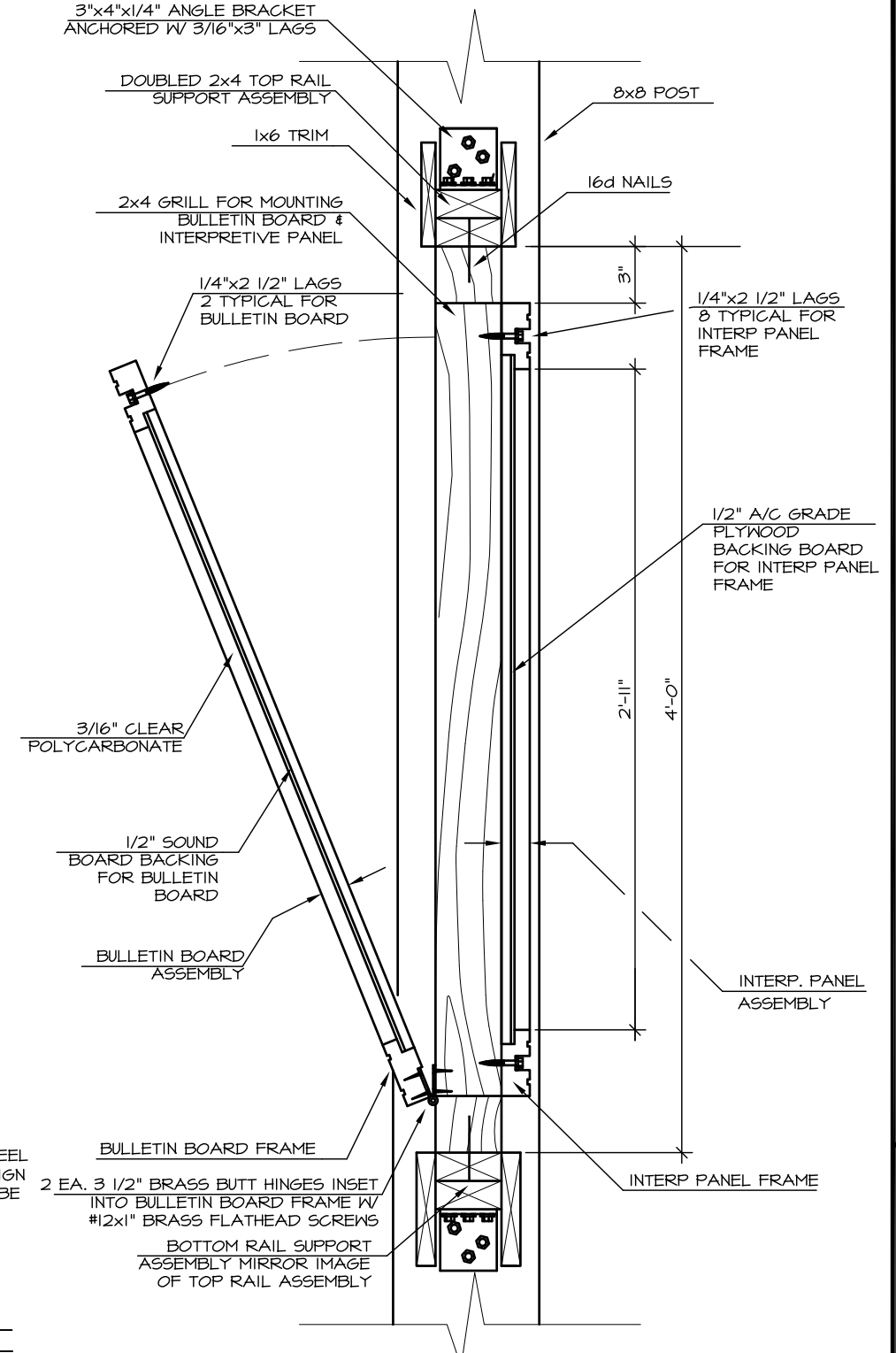
PREPARED: HL  
 DRAWN: TLC  
 REVIEWED: DH  
 DATE: JUN 96

SHEET 2

S-10B  
 OF 3 SHEETS

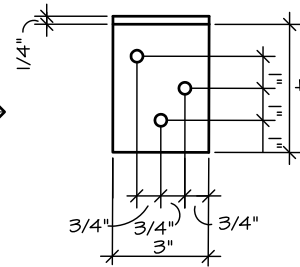
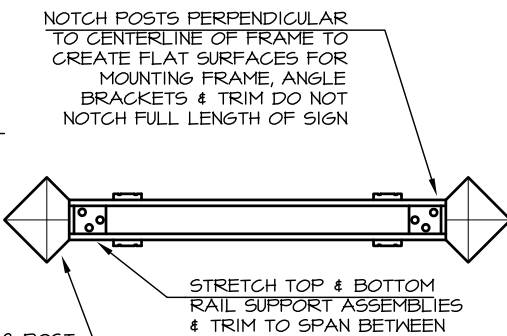
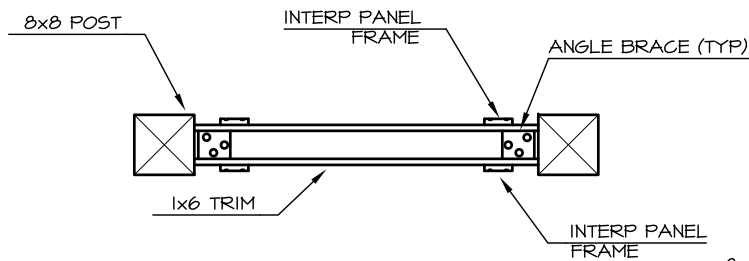


NOTE: BULLETIN BOARD, INTERP PANEL & 1x6 TRIM NOT SHOWN IN THIS VIEW



① 2x4 GRILL  
② W INTERP PANEL

② 2x4 GRILL

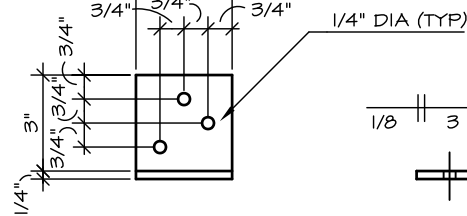


NOTE: 1/4" MILD STEEL 4 REQUIRED PER SIGN L 4 x 3 x 1/4 MAY BE USED

2 EA. 3 1/2" BRASS BUTT HINGES INSET INTO BULLETIN BOARD FRAME W/ #12x1" BRASS FLATHEAD SCREWS

③ 2x4 GRILL SECTION  
② PERPENDICULAR TO POST

④ 2x4 GRILL SECTION  
② ANGLED TO POST



⑤ ANGLE BRACKET

⑥ SUPPORT GRILL SECTION

NOTES:

- SEE SPECIFICATIONS FOR ACTUAL NUMBER & LOCATION OF INTERP PANELS & BULLETIN BOARDS
- INTERPRETIVE PANEL ASSEMBLY CONSISTS OF INTERPRETIVE GRAPHIC BACKING BOARD & INTERP PANEL FRAME.
- BULLETIN BOARD ASSEMBLY CONSISTS OF CLEAR POLY-CARBONATE, SOUND BOARD, BULLETIN BOARD FRAME & HINGES
- INTERPRETIVE PANEL GRAPHIC, SUPPLIED BY OTHERS, MEASURES 3'-0 1/2"x2'-6 1/2"x1/8" THE CONTRACTOR SHALL MAKE ACCOMMODATIONS FOR THIS GRAPHIC IN MEASUREMENTS & CONSTRUCTION.

FOR INFORMATIONAL USE ONLY  
 Alaska State Parks

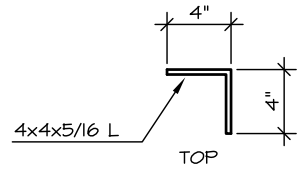
NO.	REVISION	DATE	APPROVED
7	CHANGED STATE PARK LOGO	04/10	MP5
6	CHANGED TITLE BLOCK	12/07	MP5
5	REPLACED STAMP	3/04	MP5
4	CHANGED ACTUAL TIMBER SIZES TO NOMINAL	01/03	B5D
3	REPLACED STAMP	3/02	DH
2	CHANGED DRAWING NUMBER	12/97	B5D
1	ADDED DIMS FOR GRAPHICS	6/97	D. HAGG



PREPARED: HL  
 DRAWN: TLC  
 REVIEWED: DH  
 DATE: JUN 96

SHEET 3

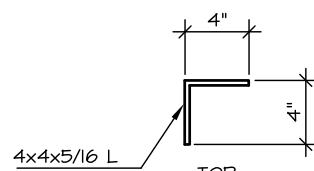
S-10B  
 OF 3 SHEETS



FRONT

OPPOSITE HANDED BRACKET IS MIRROR IMAGE

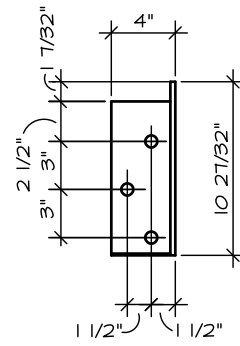
1  
3 EAVE/GABLE  
CORNER BRACKET



FRONT

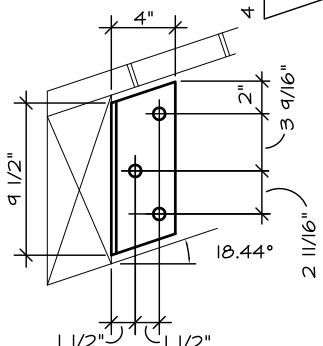
OPPOSITE HANDED BRACKET IS MIRROR IMAGE

2  
3 RIDGE/GABLE  
CORNER BRACKET



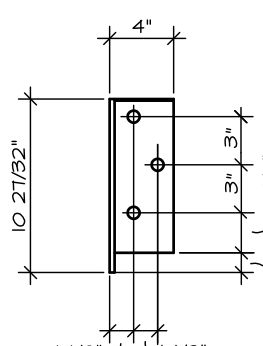
FRONT

3  
3 ROOF BEAM/  
EAVE BRACKET



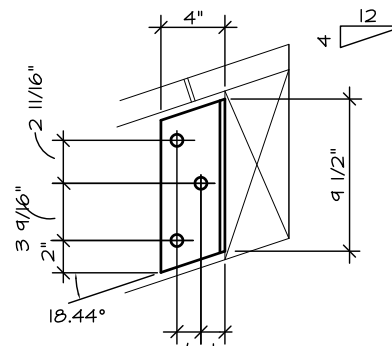
SIDE

NOTE: BRACKETS ARE 5/16" MILD STEEL

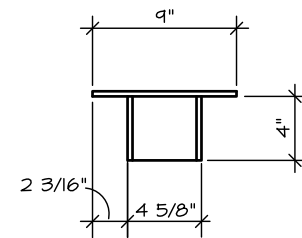


FRONT

4  
3 ROOF BEAM/  
RIDGE BRACKET

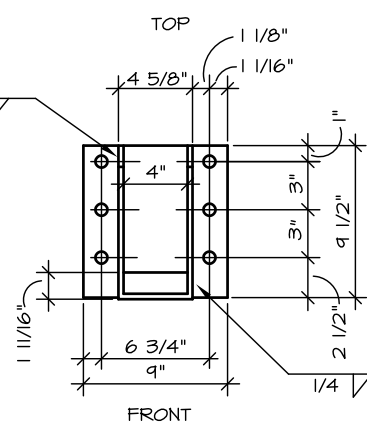


SIDE

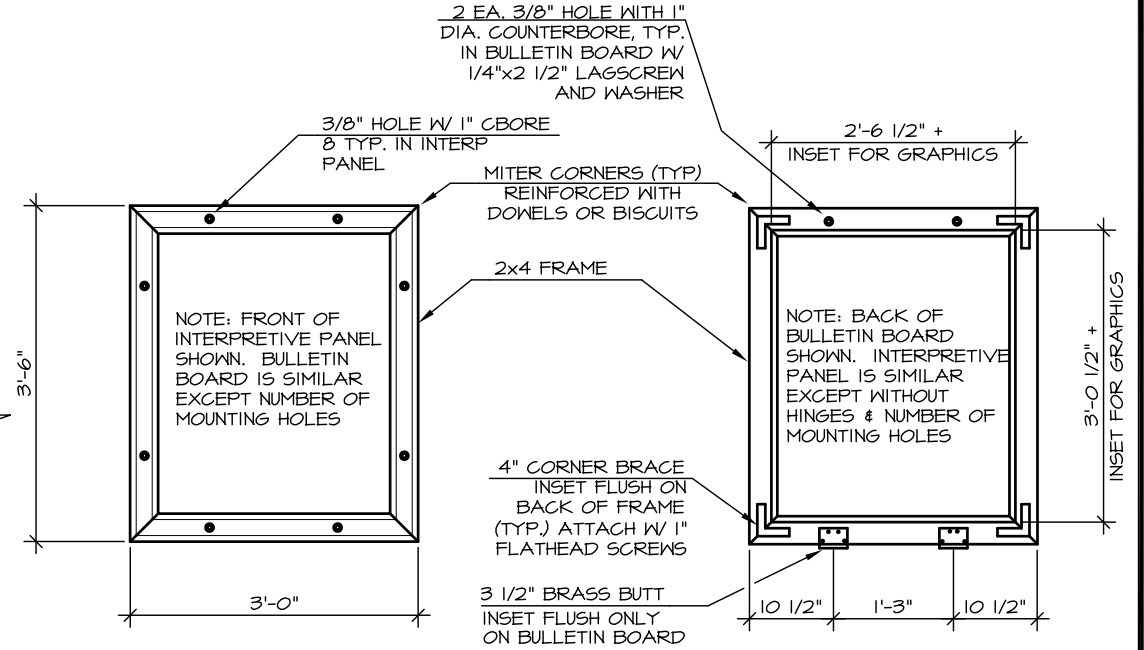


TOP

5  
3 INTERPRETIVE  
PANEL FRAME

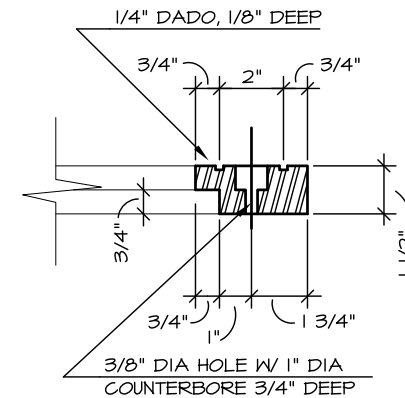


FRONT



6  
3 BULLETIN BOARD  
FRAME

NOTES:  
 1. BRACKETS ARE 5/16" MILD STEEL  
 2. BRACKET BOLTS SHALL BE 3/8"φ & EXTEND 1/4" TO 1/2" BEYOND NUT  
 3. BOLT HOLES SHALL BE 7/16"φ IN ALL STRUCTURAL BRACKETS  
 4. WASHERS SHALL BE USED IN CASES WHERE BOLTHEADS OR NUTS CONTACT WOOD.



NOTE: BULLETIN BOARD SECTION SIMILAR WITH 2 HOLES ONLY AT TOP OF FRAME

7  
3 INTERP PANEL  
FRAME SECTION

FOR INFORMATIONAL USE ONLY  
 Alaska State Parks

NO.	REVISION	DATE	APPROVED
7	CHANGED STATE PARK LOGO	04/10	MPS
6	CHANGED TITLE BLOCK	12/07	MPS
5	REPLACED STAMP	3/04	MPS
4	CHANGED ACTUAL TIMBER SIZES TO NOMINAL	01/03	BSD
3	REPLACED STAMP	3/02	DH
2	CHANGED DRAWING NUMBER	12/97	BSD
1	ADDED DIMS FOR GRAPHICS	6/97	D. HAGG