








**LWCF Boundary Map**  
**Kasilof River State Recreation Site Parking Improvements**  
**LWCF# 02-00448**

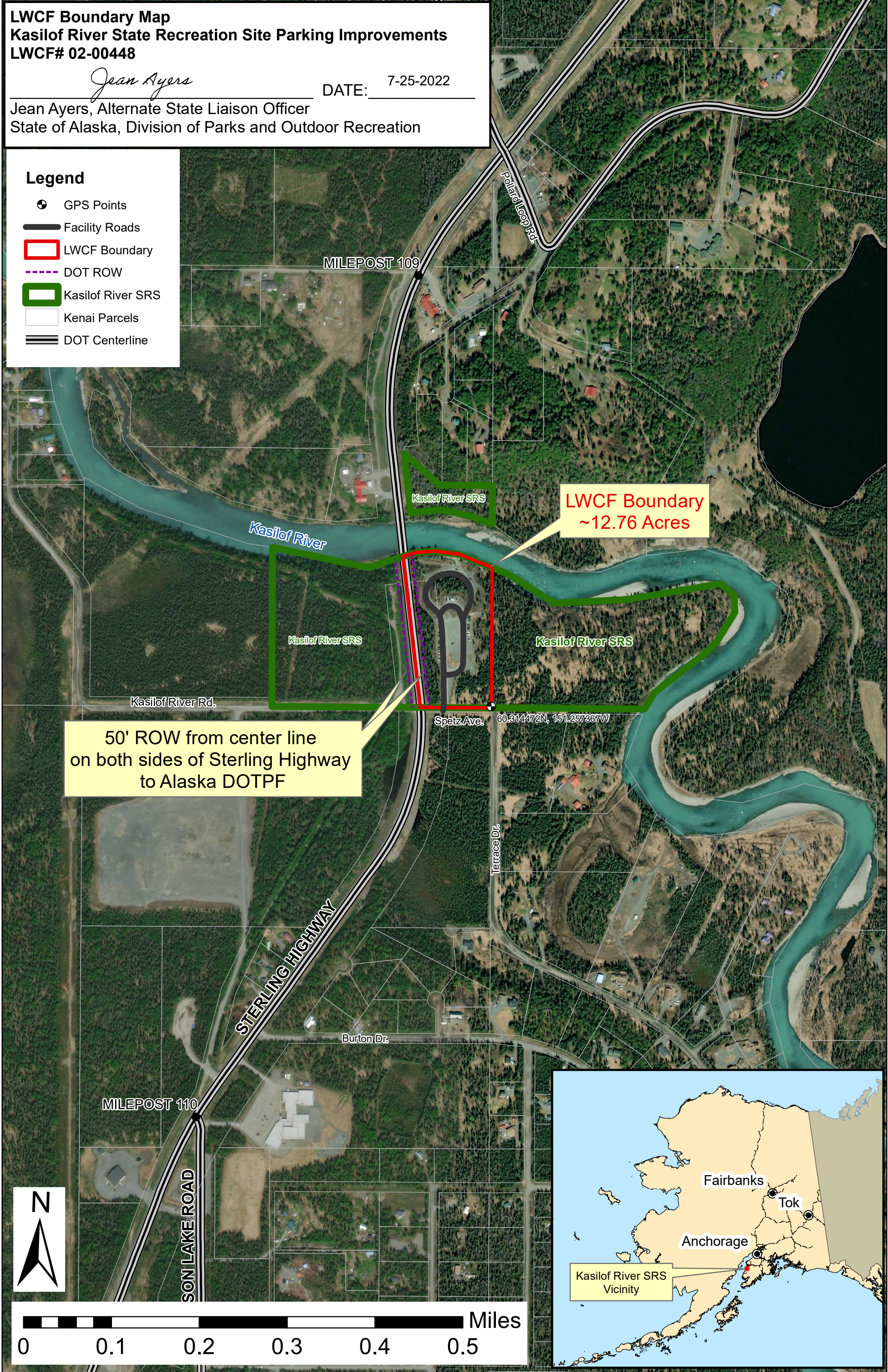
*Jean Ayers*

DATE: 7-25-2022

Jean Ayers, Alternate State Liaison Officer  
State of Alaska, Division of Parks and Outdoor Recreation

**Legend**

-  GPS Points
-  Facility Roads
-  LWCF Boundary
-  DOT ROW
-  Kasilof River SRS
-  Kenai Parcels
-  DOT Centerline



**LWCF Boundary**  
**~12.76 Acres**

**50' ROW from center line**  
**on both sides of Sterling Highway**  
**to Alaska DOTPF**

