

Currents in Cultural Resource Fieldwork Methods: Guidance and Discussion

Webinar April 18, 2024

Nick Schmuck, OHA Special Projects Archaeologist

Note: The purpose of this Webinar was to gather comments from those working in the field about topics they would like to see OHA publish guidance on in the future, and to begin an open discussion about some of these topics.

Comments from Online Discussion have been added to Slides

OHA | SHPO

Currents in Cultural Resource Fieldwork Methods:



Guidance & Discussion

Nick Schmuck, OHA Archaeologist

WEBINAR

The Office of History and Archaeology is in the process of updating and expanding the [Historic Preservation Series](#), a body of documents providing guidance on best practices for cultural resource management in Alaska.

Following up on conversations initiated during OHA's April 5th workshop, this webinar will be an [active guided discussion](#) about the current state of and future directions for CRM field methods in Alaska.

Discussion topics may include appropriate research questions to guide CRM archaeology in 2024, overcoming regional challenges to fieldwork, and the promotion and limitations of field methods that are becoming more commonplace, such as remote sensing techniques.

Additional topics may be generated at the April 5th workshop or by request to dnr.oha@alaska.gov.

FREE!

WHEN
APRIL 18, 2024
1:00 - 3:00 PM
Microsoft Teams

REGISTER
[CLICK HERE TO REGISTER](#)

For questions contact:
dnr.oha@alaska.gov



Topics

- Example of an update to the Historic Preservation Series
- Crowdsourcing for future guidance
- Place Names and OHA
- Starting the Conversation: Developing appropriate research questions for 2024
- Starting the Conversation: Guidance that would be useful for remote sensing
- Starting the Conversation: Poll Topic

Upcoming Update to Literature Review HPS for next year: Legacy Data

Old Surveys:

- how do we evaluate how useful they are?
- How do we ensure better longevity for the future?

Historic Contexts...room for improvement



Crowdsourcing Future Guidance...

<u>Monitoring</u>	12% (4)
<u>Collection Protocols</u>	9% (3)
<u>Remote Sensing Techniques</u>	12% (4)
<u>Place Names in CRM</u>	6% (2)
<u>Consultation</u>	12% (4)
<u>Alaska Regional Challenges to Fieldwork</u>	6% (2)
<u>Community Archaeology</u>	6% (2)
<u>Heritage Tourism</u>	9% (3)
<u>Paleontology</u>	0% (0)
<u>Data Recovery</u>	9% (3)
<u>Post-Field Analysis</u>	6% (2)
<u>Predictive Models</u>	6% (2)
<u>Underwater Archaeology</u>	0% (0)
<u>Research Priorities</u>	3% (1)
32 responses	

Getting the ball rolling:
nick.schmuck@alaska.gov

Polling for Priorities....

Email or chime in on the chat
if interested in joining a
working group for a particular
topic

Add’nl HPS topics: Guidance/resources for Alaska Native organizations involved in/sponsoring
archaeological research

More Section 106 guidance for Tribes

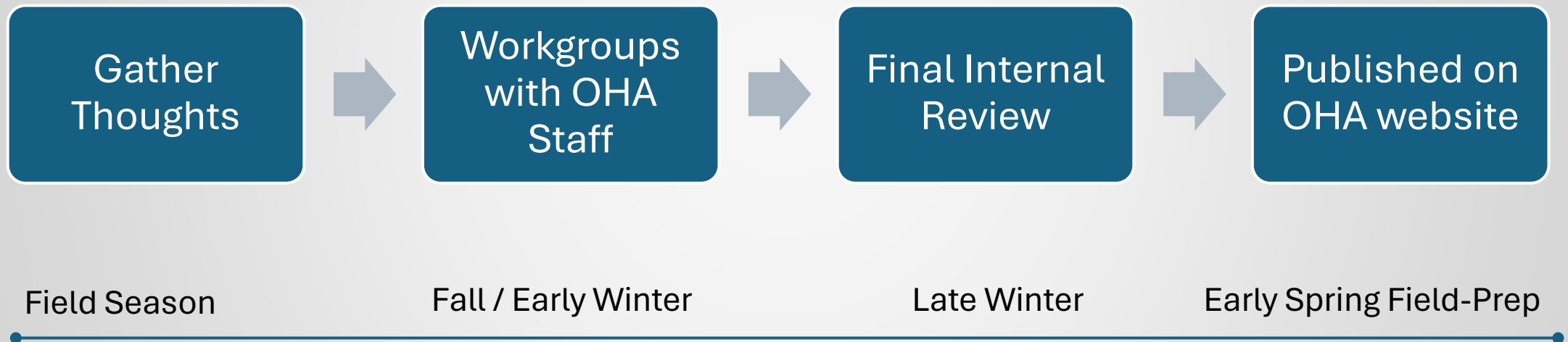
Historic Archaeology

***Documenting / Gathering info on ephemeral TCPs and TCLs, travel routes, etc.

- Monitoring
- Collection Protocols
- Remote Sensing Techniques (LiDAR, Metal Detecting, GPR, etc.)

- Place Names in CRM Archaeology
- Consultation
- Alaska Regional Challenges to Fieldwork
- Community Archaeology
- Heritage Tourism
- Paleontology
- Data Recovery
- Post-Field Analysis
- Predictive Models
- Underwater Archaeology
- Research Priorities

How will this work??



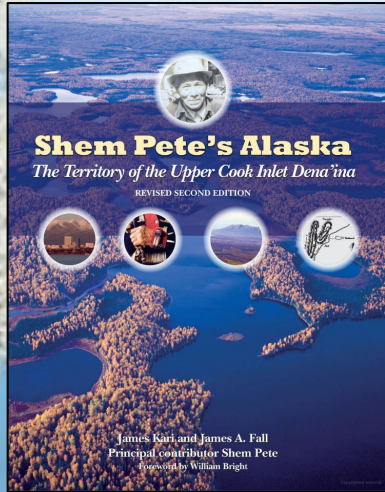
Comment: consider publishing a draft version for comment on a designated time frame

Place Names...when we get there...

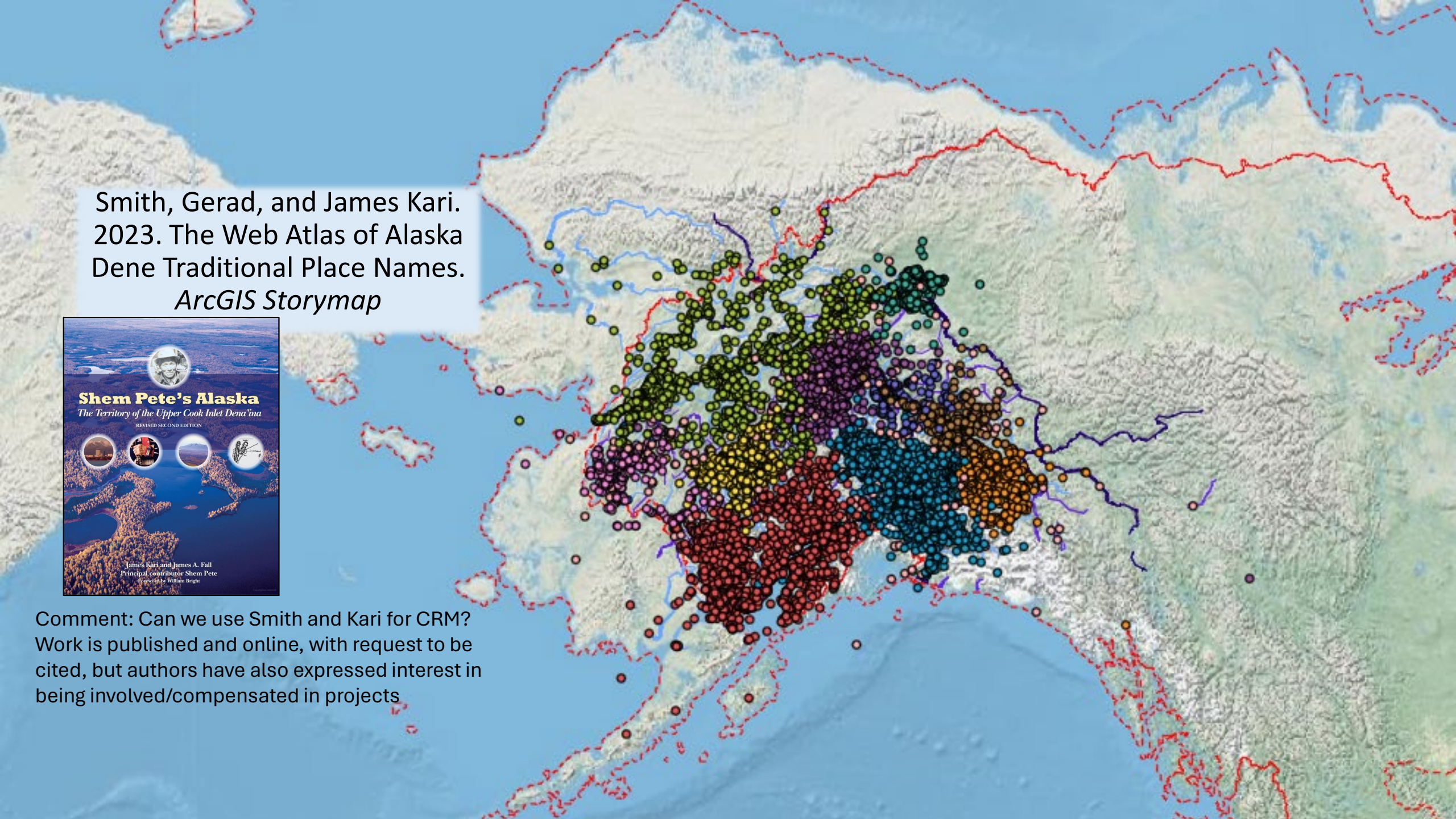
(At least for now) OHA can't host all datasets without setting up a system for handling the underlying issue of confidentiality / sharing permissions...

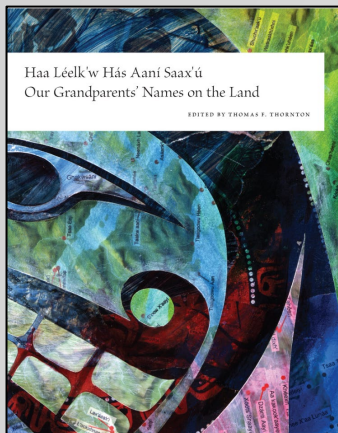
but we can aggregate links to resources on a webpage?

Smith, Gerard, and James Kari.
2023. The Web Atlas of Alaska
Dena Traditional Place Names.
ArcGIS Storymap



Comment: Can we use Smith and Kari for CRM?
Work is published and online, with request to be
cited, but authors have also expressed interest in
being involved/compensated in projects





Filling in the blanks...

TLUI: Traditional Land Use Inventory. North Slope Borough.

ELOKA: Exchange for Local Observations and Knowledge of the Arctic

<https://eloka-arctic.org/communities/koyukuk/atlas/index.html>

<https://eloka-arctic.org/communities/yupik/atlas/index.html>

<https://eloka-arctic.org/product/atlas/gwichin-place-names-atlas>

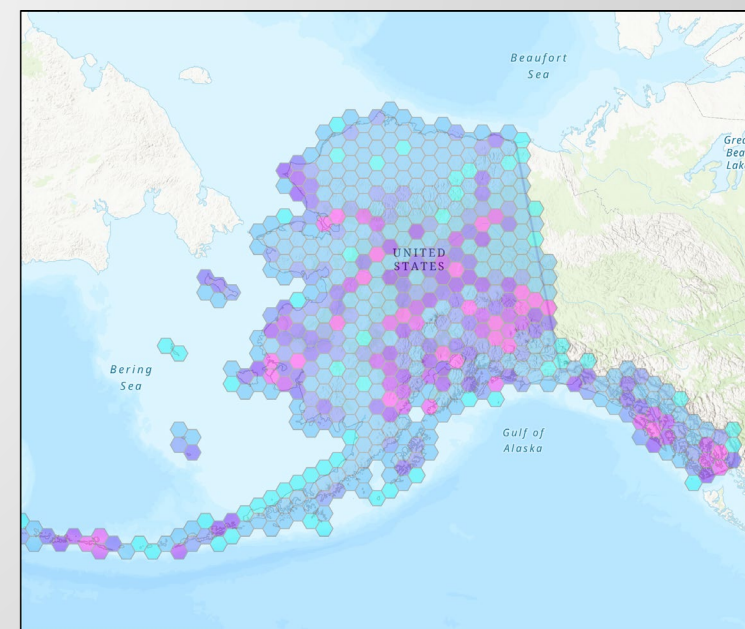
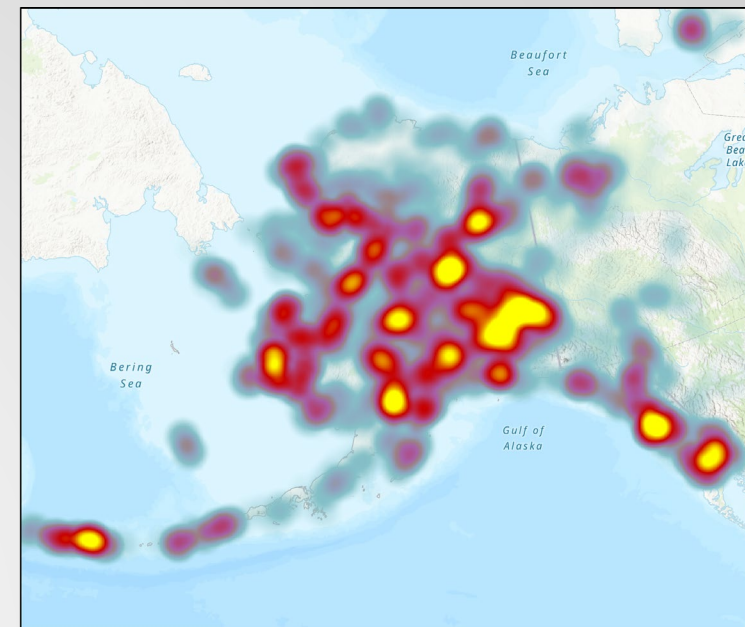
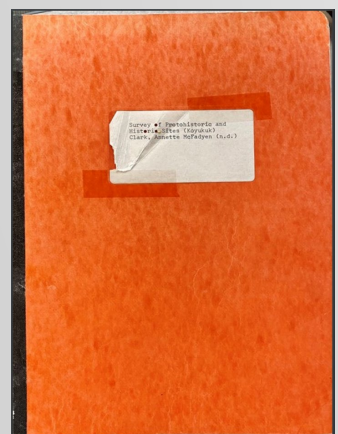
Inupiaq Places Names in Western Arctic Parklands. National Park Service, Alaska Regional Office.

Thornton, Thomas F. 2012 Haa Léelk'w Hás Aaní Saax'ú, Our Grandparents' Names on the Land. Sealaska Heritage Institute.

Yoko Kugo. 2020. Iliamna Lake (Nanvarpak, Nila Vena) Native and Local Place Names (2016-2019). Arctic Data Center. doi:10.18739/A2FX73Z6V

Alaska and Polar Regions Collections & Archives (APRCA), University of Alaska Fairbanks.

- Clark, A. Mcf. (N.D.) Survey of Protohistoric and Historic Sites (Koyukuk)
- Burch (N.D.) Place Names



Developing Appropriate Research Questions in 2024

Developing Appropriate Research Questions in 2024...

Concepts to Consider...

- Sensitivity to climate change
- Interest in collaborations
- Scale: Local/ Landscape/ Region
- Data Gaps: New Places / Blind Spots
- Changes in Environment
- Data Sovereignty
- ...

EXAMPLES?

- Collaboration: Find questions in local concerns/interest
- Tie questions into State Historic Preservation Plans
-
-
-

Starting the Conversations

Experiences /
Perspectives?



Topics Where
Guidance Would
Be Welcomed

Starting the Conversation: Metal Detecting Experiences / Perspectives?

- Great for defining boundaries of historic sites/finding artifacts
 - Defining artifact density can help with evaluating site potential under criterion D
- Can work well for precontact Ahtna/Dena'ina sites with copper
- Great for also ruling out historic use as potential cause for subsurface depressions
- May be useful for identifying Historic Burials?
- There are trainings out there – OHA should host recommendations for trainings that would be suitable for metal detection in CRM
 - NPS has standards to reference. NLUR uses AMDA
 - <https://amda.modernheritage.net/>
 - Interest in OHA hosting trainings
- Should be considered alongside subsurface testing as standard for identifying historic sites on surveys, not just exploring already identified historic sites
- OHA should develop MD protocols and collection strategies
- General consensus –MD should be in multiple HPS documents (dedicated HPS, survey, historic archaeology)

Metal Detecting

Useful Topics for Guidance

- How do you focus your efforts?
- When is metal detecting useful?
- How should you map positive hits?
- How should you subsample hits with testing?
- Should you include community collaborators?

WHAT ELSE?

- How do you incorporate MD into pedestrian survey strategies?
- Links to trainings
- How can use of a MD play into level of effort
- Combining MD surface detection with methods for subsurface
- Defining historic site boundaries
-
-

Starting the Conversation: LiDAR Experiences / Perspectives?

-Communities in lake and peninsula borough have selected areas for lidar collection:

<https://digital.akbizmag.com/issue/april-2024/lidar-data/>

-Sean Mack's AAA presentation: we can develop algorithms to process large datasets to highlight potential semisubterranean features

-Oftentimes with high enough resolution, multiroom dwellings are clearly definable.

-Depending on the season of data acquisition/resolution of the data, sometimes these features do not show up on lidar even when visible on the ground, so Lidar can't rule out areas as devoid of features

-Useful on smaller scale (iphones/ipads) for recording historic buildings, may be for artifacts one day

-Can carry measureable comparative faunal collection into the field with a dataset on your phone

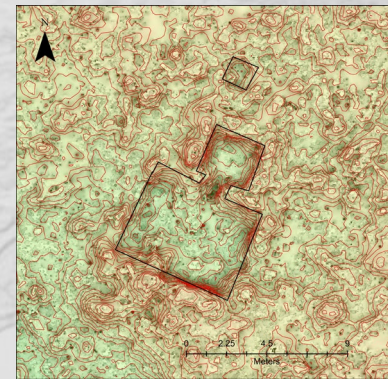
-Drones are an interesting potential avenue, but require costs/licenses that are prohibitive

-Conversation to have: where do we draw minimum effort with use of these methods?

Concern: be careful what we mandate that may price out smaller entities, like local museums

How can OHA help push for collection of lidar data at the early stage in a project?

ANC-04769 Lidar
Contour/Photo:
Richard Martin



LIDAR

Useful Topics for Guidance

- Landforms
 - Identifying landforms
 - Evaluating landform age/stability
- Cultural Features
 - Semi-subterranean dwellings, caches
 - Historic buildings
 - Trail systems
- Tracking Down Data (DGGS +)

WHAT ELSE?

- Pairing with historic imagery!
- Photogrammetry + Lidar for smaller scale (buildings, etc)
- Drones
- Carrying measurable comparative collections in the field
- Questioning the minimums - when do we start asking that folks use available datasets?
- how do we get more Lidar
-
-
-

GPR / Resistivity / Magnetometry

Useful Topics for Guidance

- Where does each method excel?
 - Situations/Features
 - Regions/Landscapes?
- Major limitations?
- Data Processing + Interp
- What details should be in the report?

WHAT ELSE?

- Dog-assisted survey is becoming more affordable/available
 - Really useful for narrowing down the GPS survey locations to target smaller areas
-
-

Starting the Conversation: Poll Topic

Experiences / Perspectives?

Consultation

Useful Topics for Guidance

- Things to pass on to clients for promoting proactive/consistent/good faith consultation
- Responsibilities of all parties
- Recommendations: regs vs. practice vs. ideal/ what constitutes meaningful consultation
- Clearinghouse for Tribal Protocols for consultation, including museums and other relevant parties that are not federally recognized Tribes
- This can also include regional resources (repatriation, curation guidelines in Kodiak, for example)

WHAT ELSE?

- Who else can we involve in this conversation?
- How do we manage the financial burden of consultation on the consulted party
- CR professionals need standards for conducting their own informal consultation with relevant communities for site identification surveys
- CR Professionals should be planning and budgeting for early informal consultation as part of survey planning
- Managing projects where responsible agency's formal consultation doesn't match field timelines
- Section 106...but what about expectations under AHPA...
- Results of poor consultation...

Any other Topics for Discussion?

- Expanding general guidance on Section 106 for various parties (timelines, responsibilities)
- Confronting the conflict of interest : CRM is paid by the client but responsible for the resource
- OSHA and Archaeology
- Can OHA have a webpage that is a “live” forum where the crm community can share links, citations, accessibility hints for data sets? - We probably could have a page we curate where we post things that are sent to us
- OHA’s expectations for documentation/gathering information for more ephemeral places like TCPs, TCLs, traditional use areas, trails

Thank you!