

# Stewardship Through Public Education



In Alaska

# About Project Archaeology

- In 1990 BLM created Project Archaeology in Utah as a statewide project to combat the vandalism and looting of archaeological sites.



- Project Archaeology is now a joint program of Montana State University and the Bureau of Land Management.



# The Mission

**Project Archaeology uses scientific inquiry to:**

- **Foster understanding of past and present cultures;**
- **Improve social studies and science education literacy;**
- *Enhance citizenship education to help preserve our archaeological legacy.*

# The Three Components

- **High quality educational materials;**
- **Professional development for educators;**
- **Continuing professional support.**

# The Audience

- **Project Archaeology is for anyone interested in learning and teaching about archaeology and historic preservation;**
- *Interested parties may include upper elementary and secondary teachers and their students.*

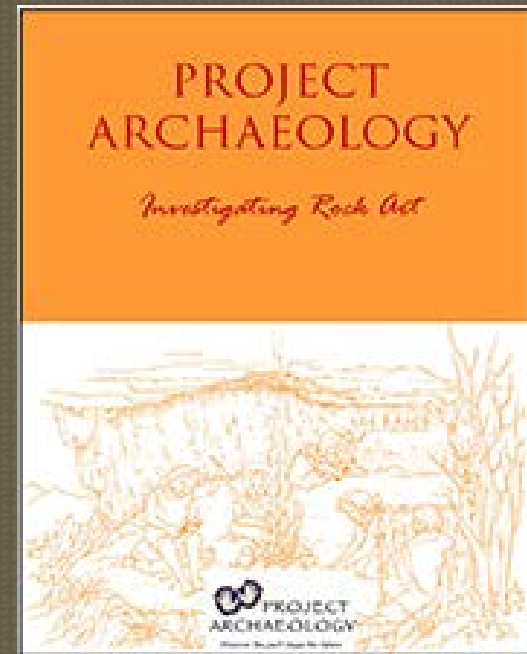
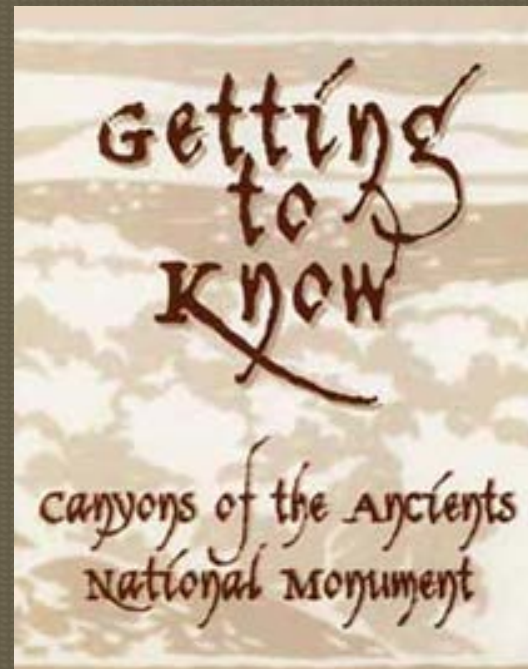
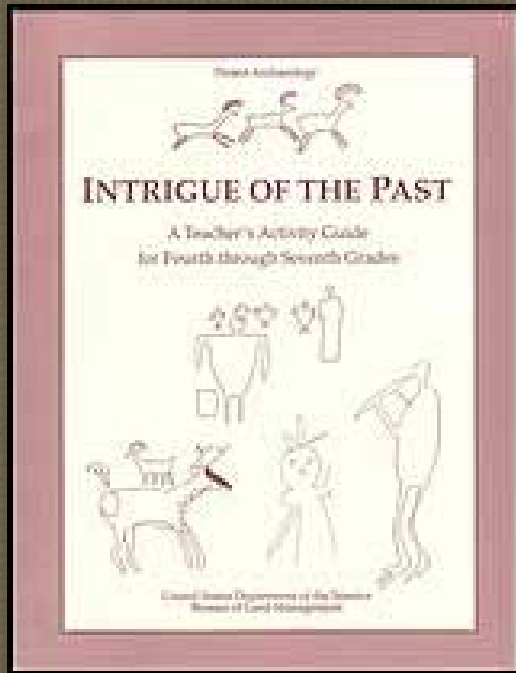
Project Archaeology materials align with Common Core State Standards for grades 3 through 5 and Next Generation Science Standards

# The Program

**Project Archaeology teaches through a hands-on approach**



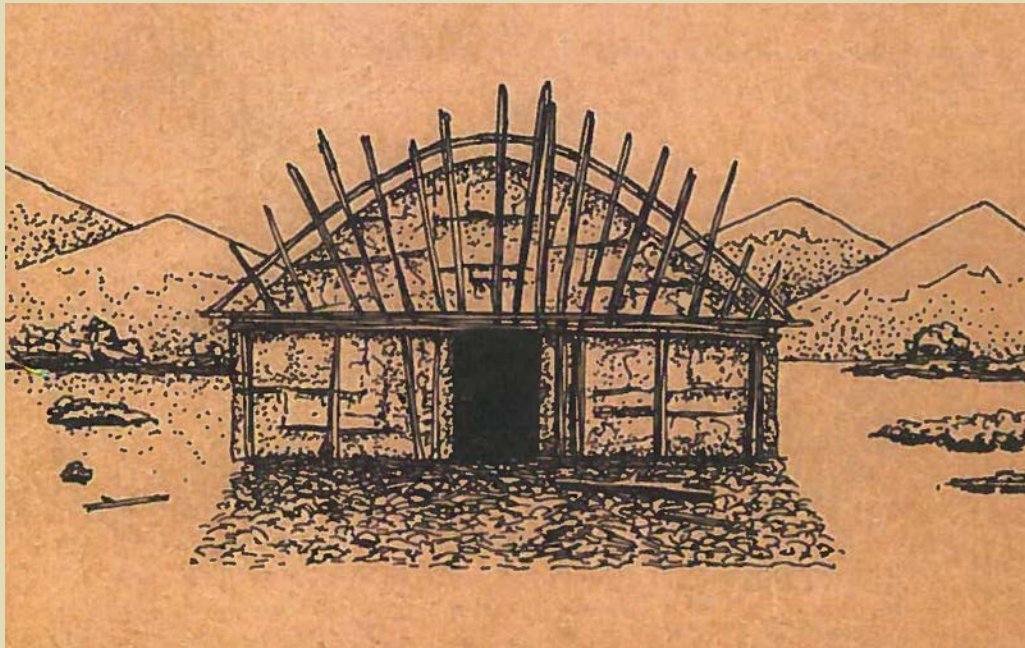
# The Curriculum



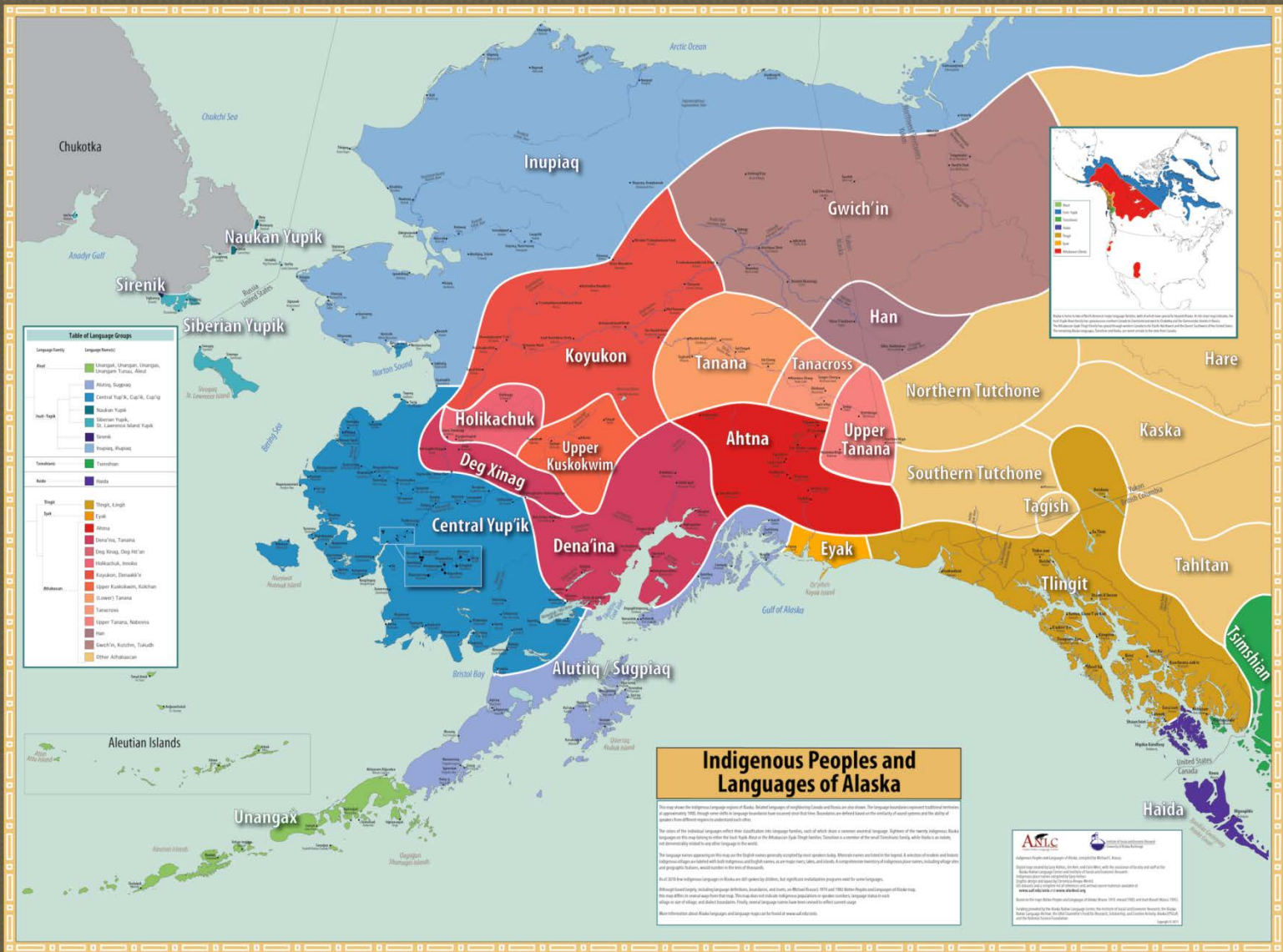
Educational materials include teacher training, lesson plans, student notebooks, and classroom supplies.

# Project Archaeology 2016 Initiative

## **Ahtna Houses: Investigating Athabascan Shelter in the Copper River Basin**







**Table of Language Groups**

Language Family	Language(s)
Arahik	Chugach, Unangan, Unangan, Unangan, Tutina, Aleut
	Malyuk, Sugpiaq
	Central Yup'ik, Central, Central
North Tutchone	Koyukon, Yupik
	Central Yup'ik, Central
	Central Yup'ik, Central
	Central Yup'ik, Central
Tutchone	Central
	Central
Kaska	Central
	Central
Tlingit	Central, Kaska
	Central
Tahltan	Central
	Central
Haida	Central
	Central
Aleutian Islands	Central
	Central
Unangax	Central
	Central

**Indigenous Peoples and Languages of Alaska**

The map shows the indigenous language regions of Alaska. Related languages of neighboring Canada and Russia are also shown. The language families represent traditional boundaries as of approximately 1900. Some languages have since become extinct. Some languages are still spoken but only by a few speakers. Some languages are still spoken but only by a few speakers. Some languages are still spoken but only by a few speakers.

The color of the individual language families, and of which there is a common central language. The names of the languages, Kaska languages on the map belong to other the North Tutchone or the Aleutian Tutchone. Some are a member of the small Tutchone family, while others are not, and are therefore listed as other languages of Alaska.

The language names appearing on this map are the English names generally accepted by most speakers today. Where names are listed in the legend, it indicates that the name and its spelling are different from the English name. Some names are listed in the legend, it indicates that the name and its spelling are different from the English name.

As of 2010 the indigenous languages of Alaska are still spoken by 100,000 people, but significant revitalization programs exist for some languages.

Alaska has a long history of language revitalization, including language immersion, bilingual education, and more. In 1976 and 1980 Alaska Native languages and languages of Alaska were included in the federal Indian Education Act. This act provided for the development of language immersion programs in schools and the use of village and Alaska languages. Finally, several language names have been revised to reflect current usage.

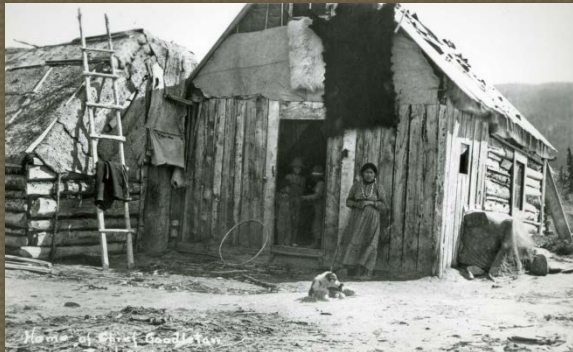
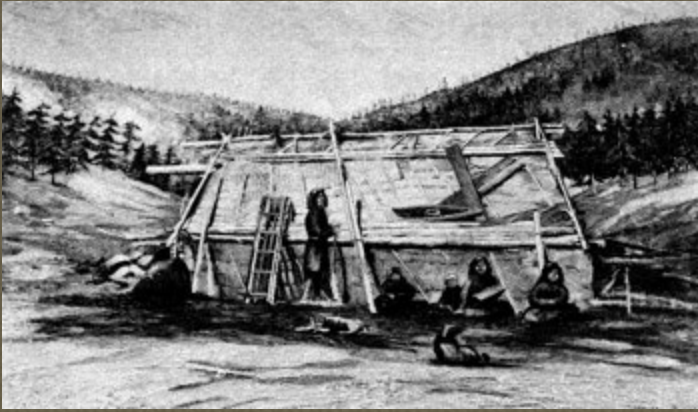
More information about Alaska languages and language maps can be found at [www.alaska.gov](http://www.alaska.gov).



**ASLC** Alaska State Language Center

Alaska State Language Center  
1000 West 12th Avenue, Suite 100  
Anchorage, Alaska 99515  
Phone: 907-586-2222  
Fax: 907-586-2223  
Email: [aslsc@alaska.gov](mailto:aslsc@alaska.gov)  
Website: [www.alaska.gov/aslsc](http://www.alaska.gov/aslsc)

# Sources



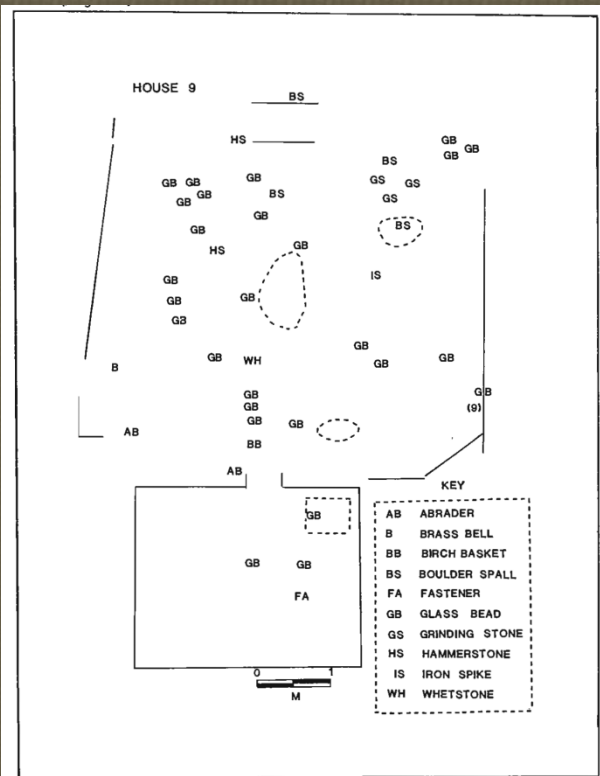


Fig. 23. Distribution of Artifacts--House 9.  
 From Daka De'nin's Village (Shinkwin 1979)

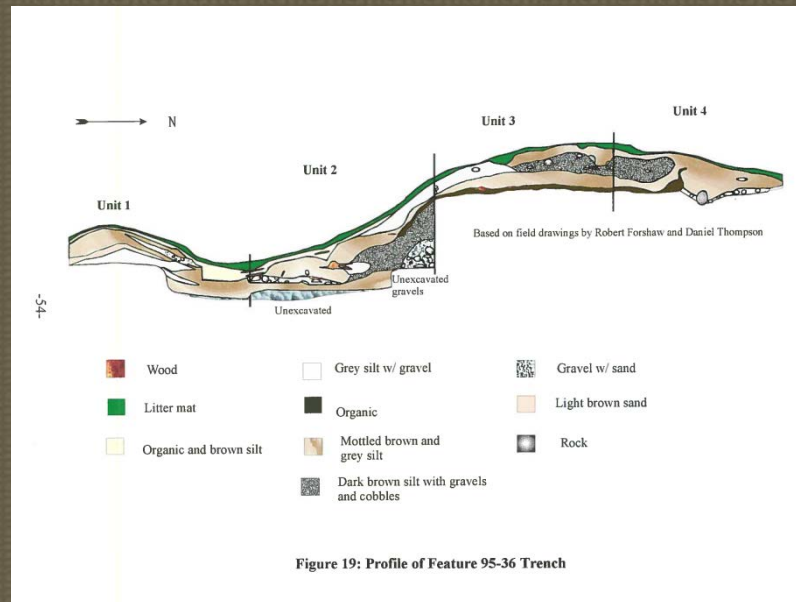


Figure 19: Profile of Feature 95-36 Trench

# Project Stages

- Stage I – Plan and Seek Funding

  - 2016

- Stage II - Create Written Curriculum Content

  - 2017

- Stage III Create Graphic Content, Format, Edit , Review

  - 2017-2018

- Stage IV Deliver Curriculum to Copper River Basin Schools

  - 2018 - 2019

# Partnership Development

- National Park Service
- Bureau of Land Management
- Copper River Basin School District
- Ahtna, Inc.
- Ahtna region Native Village Councils

# Commitments

- OHA – Staff Time for Planning, Fund Raising and Implementation, All Project Stages
- BLM Alaska – 100% Funding Stage II
- NPS Alaska – 100% Funding Stage III
  - 25% Funding Stage IV

# Outcomes!

